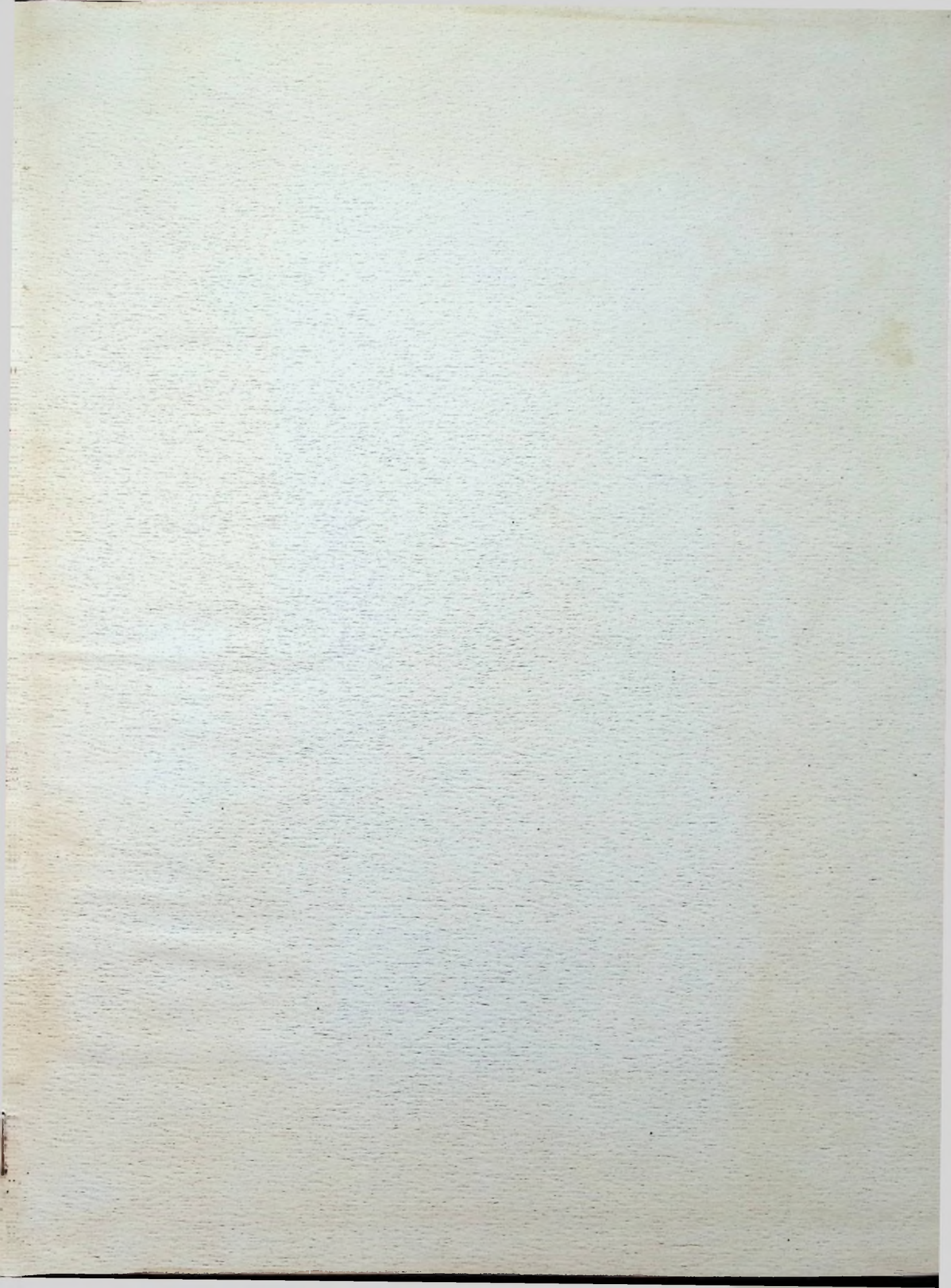
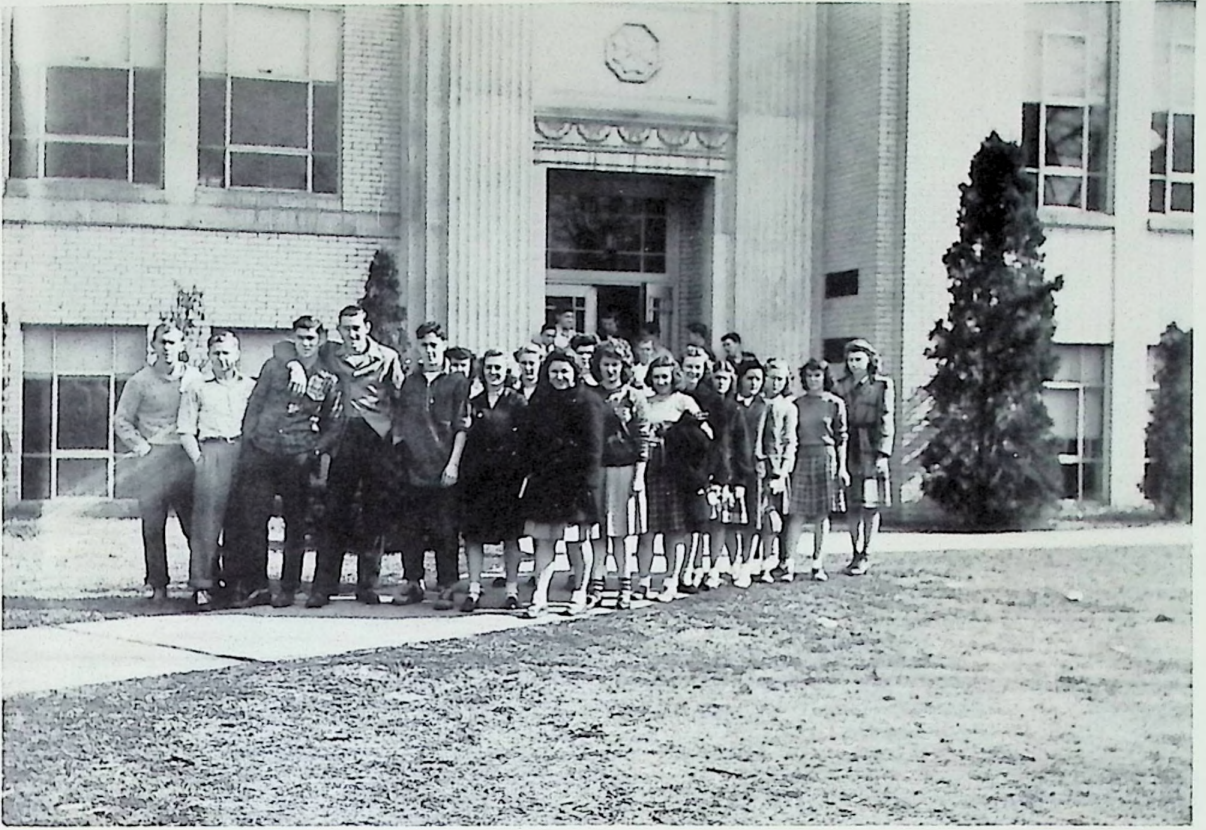




THE

WHEEL





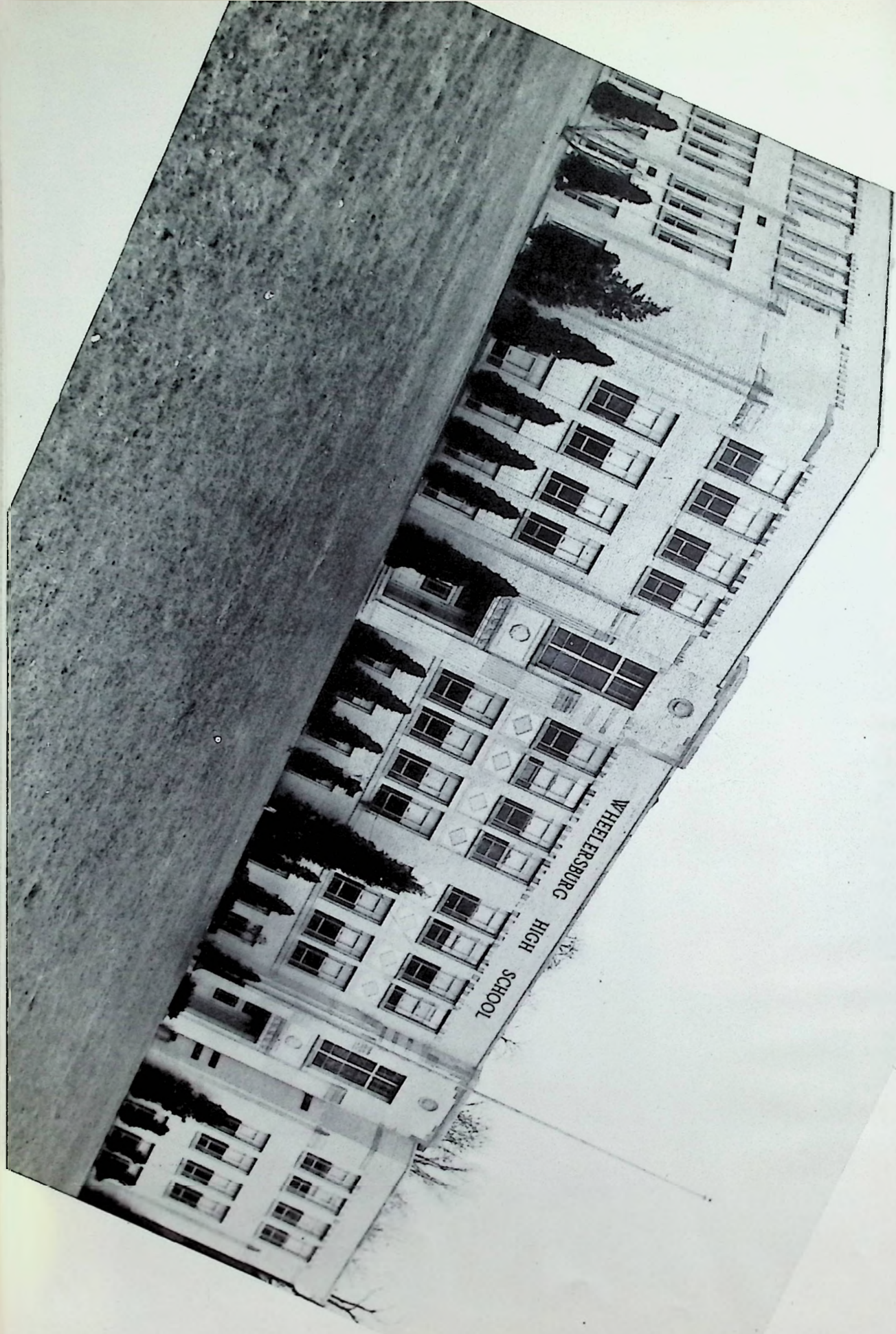
Presenting . . .

THE WHEEL

of 1946

*'Tis springtime, 'tis springtime!
Cold winter has passed.
Warm breezes are blowing
And May's here at last.*





CONTENTS

| | |
|--------------------------|----|
| ADMINISTRATION | 12 |
| CLASSES | 20 |
| FEATURES | 44 |
| DEPARTMENTS | 50 |
| ATHLETICS | 62 |
| ACTIVITIES | 69 |
| SNAPS | 85 |
| ADVERTISEMENTS | 98 |

A
Tribute
to
Our
Coach



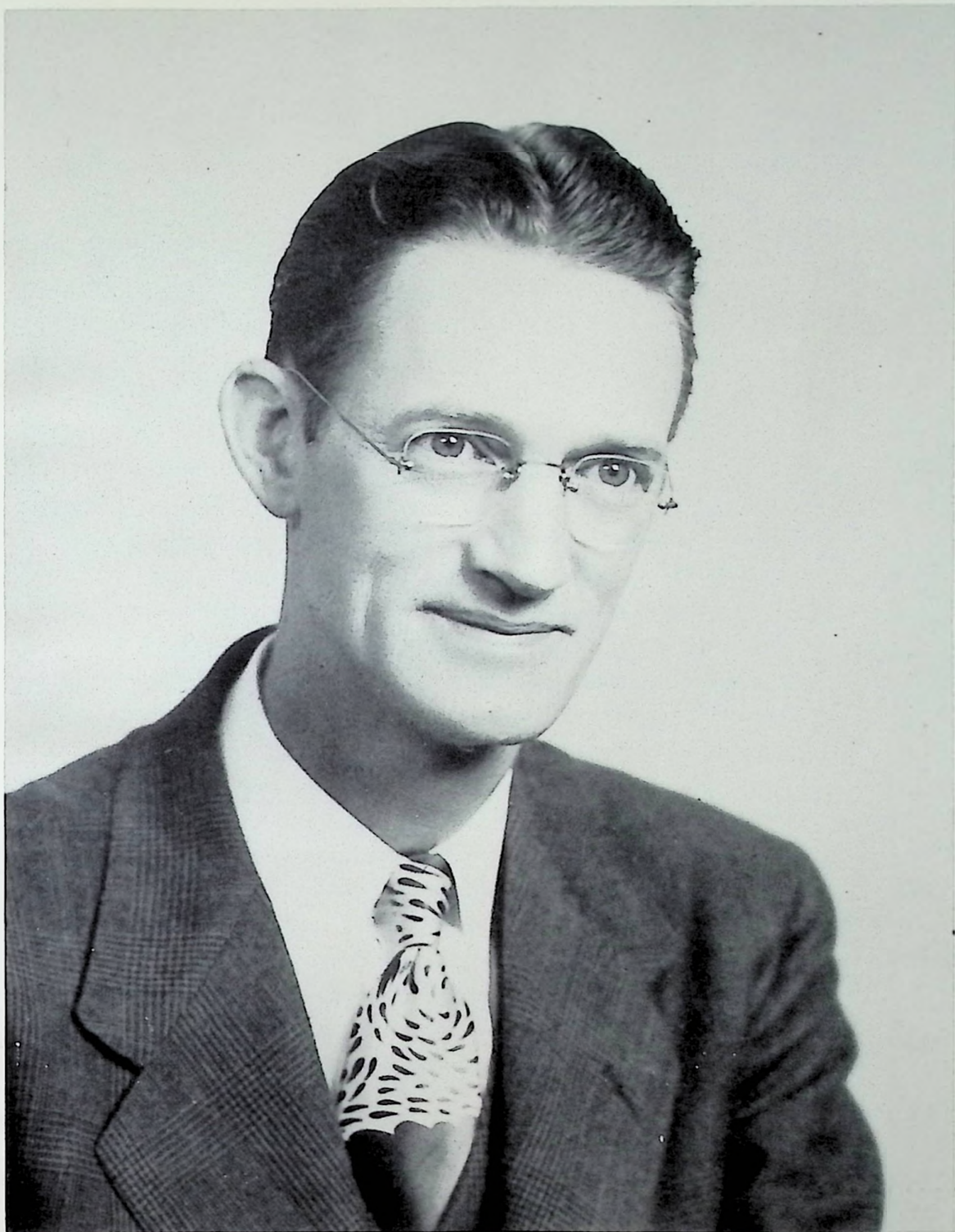
To "Skinny," who has the ability to work with students in perfect harmony, and to inspire in those that know him something of his own cheerful philosophy, the Senior Class dedicate this book.

Since he has been coach at Wheelersburg the basketball teams have gained the respect of the community and state alike.

As adviser of our class he has guided and directed our activities, making our senior year pleasant and memorable.

The final criterion of his character can have no better source than the basketball boys with whom he was so closely associated. Their universal admiration for him is sufficient proof that we were justified in dedicating this year's Wheel to him.

"The fellow that's loyal and true,
The one who is fair, and he's built on the square
A genuine man through and through."



To you, Mr. Preston, our adviser and friend, we the Class of 1946 dedicate our yearbook.

PERFECTION

"The Master was painting a picture and we children were ranged all about.
Entranced by the charm of his colors and the way he was working it out;
And we'd run every morn to discover some beautiful touch which was new,
And we'd talk and we'd dream and we'd wonder just what he intended to do.
The Master spoke little while working but oft as he heard us he'd smile,
Though we begged him to tell about it, he'd answer: "You'll know in a while."
But one morning he put down his brushes, and then with a turn of his head
To our grief and our great consternation: "The picture is finished," he said.
"Oh, Master," we begged and implored him, "don't put all your brushes away.
Please paint something more on the canvas, paint on to the end of the day.
Paint more, for we're eager to watch you, paint on for we love it so much."
"It is perfect, my dears," said the Master, "I should spoil it by adding one touch."
So with us God is painting a picture, and little we know of His plan,
We look at the lad whom we cherish and are eager to see him a man,
But God knows the soul He is shaping, and though for more time He's beseeched,
He hurts us beyond understanding, but He stops when perfection is reached."

Edgar A Guest.

I N M E M O R I U M

LESTER GALLION
Class of '46

BILL SELBY
Class of '47

ROYDON WRIGHT
World War II

JACK WATTS
World War II

CARL McHENRY
World War II

PETE MORRISON
World War II

BOB LEWIS
World War II

JOHN HUGHES
World War II

RUSSELL HUFFMAN
World War II



Administration





PEARL G. SMITH

For the past three years Mr. Smith has served as Supervising Principal of Wheelersburg High School. In that period of time Wheelersburg has gone forward in all phases of education. The school has maintained the high standards of scholarship for which Wheelersburg has always stood. The spirit of the school, the general attitude of friendliness and cooperation, and the excellent sportsmanship point to the fact that Wheelersburg has been fortunate in having Mr. Smith as principal.

The high school supervisor, Mr. L. L. Louthian, in his annual visit to our high school rated our school superior in administration and instruction. We are grateful to Mr. Smith for his service in helping Wheelersburg to attain this rating.

Mr. Smith graduated from Ohio University, Athens, in 1934, majoring in mathematics and educational theory. He was granted his Masters Degree from the University of Cincinnati, with a major in school administration and school supervision.

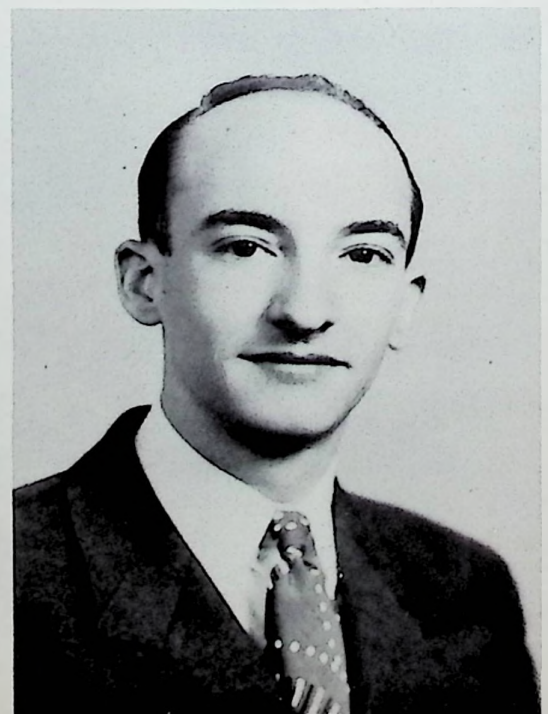
Mr. Smith is a member of the Phi Delta Kappa National Honorary Fraternity.

J. DONALD McCOWEN

For the past two years Mr. McCowen has served as assistant to Mr. Smith. His work included certain office and administrative duties which gave Mr. Smith more time for supervision. However, Mr. McCowen still retained his full teaching load and also sponsored several extra-curricular activities.

Mr. McCowen graduated from Ohio University, Athens, Ohio. He has done graduate work at Ohio University and Ohio State University majoring in administration and supervision. He will receive his Masters Degree soon.

Mr. McCowen's practical application of subject material has rated him with us as an excellent teacher. His willingness to listen to our problems and suggest probable solutions for them has rated him as understanding. We believe he is truly a friend to the students of Wheelersburg High School.

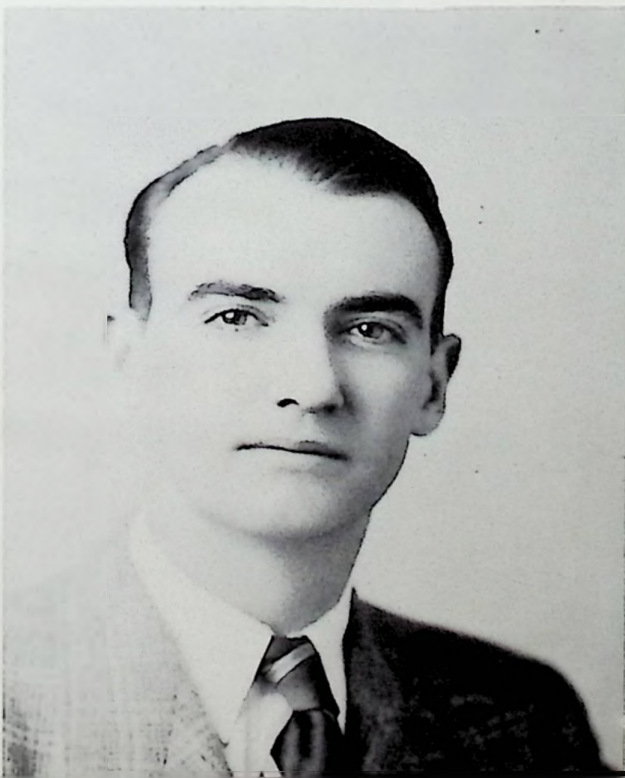




Back row: E. R. McCowen, County Superintendent; George W. Smith, J. Harper Preston, G. Smith.

First row: Fred Pollock, Vice President; R. L. May, President; Carl Herms, Clerk.

BOARD OF EDUCATION



EDWARD R. McCOWEN

County Superintendent of Schools

Mr. Edward R. McCowen resumed his duties as County Superintendent the first of the year. For the past two years he has served with the U. S. Navy in the Carribean area. Wheelersburg welcomes Mr. McCowen home.

Mr. McCowen began his work as Assistant County Superintendent and supervisor of music and English in 1940. With the entrance of his father Mr. E. O. McCowen into Congress he became County Superintendent.

His experiences in all phases of the educational process from the elementary through the secondary level provide him with an excellent background and knowledge of the entire county school system.

FACULTY



L. B. BURNS
Ohio State
Marshall College
Lincoln Memorial Institute
University of Kentucky
Morriss Harvey
A. B.



RUTH DISTEL
Mount St. Joseph on Ohio
Home Economics
Physical Education
B. S. Educaton



MRS. O. E. GYOR
Ohio University
B. S. Education
History
Economics
Commercial Law



MRS. E. V. HOWELL
Georgia State College
B. S.
Home Economics
Chemistry



RUTH HUMPHREY
Ohio University
Ohio State University
Latin, Commercial
A. B.
M. A.



MRS. MARGARET MCGOWAN
Oberlin College
Ohio Wesleyan
Cincinnati College of Music
Cincinnati Conservatory of Music
B. M. Music
M. M. Music



J. E. McNAUGHTON
Ohio State University
Ohio University
Arithmetic
General Science
B. S. Education
M. A. Education

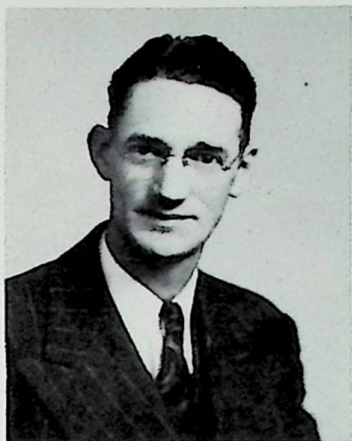


MRS. W. H. MERRILL
Ohio Wesleyan
B. A.
English

FACULTY

LORRAINE POTTS
Ohio University
B. S. Education

ARTHUR PRESTON
University of Cincinnati
Wilmington
Ohio University
Industrial Arts
American History
Radio
Coach
B. S. Education



WILLA SUE RICHARDS
Eastern Kentucky
State Teachers College
English
History
A. B.

W. DONALD RUSSELL
Ohio University
Ohio State University
B. S.
Science Physical Education



J. H. SEE
Ohio University
Mathematics
B. S. Education

ELVA SHELA
Ohio University
English
B. S. Education



LYDA BELLE SHEPERD
Eastern Kentucky
State Teachers College
Shorthand
Typing
A. B.

JAMES N. WARREN
Ohio State University
Ohio University
Rio Grande
M. A. Work at Ohio University
and Ohio State University
Industrial Arts
B. S. Education





Cecil Pollock, Bertha Perdue, Ollie Hibbitts, Avanelle Staker

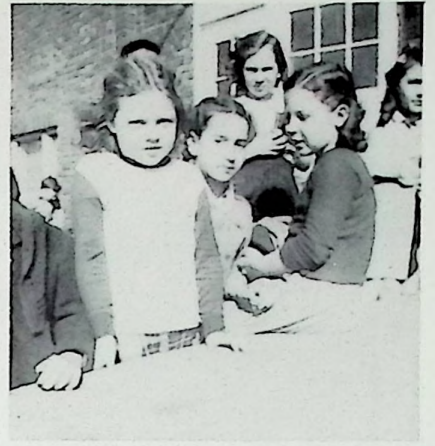
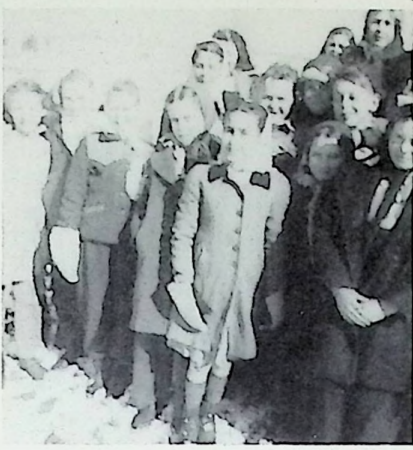
ELEMENTARY TEACHERS

Back row: Mary McCarty, Anne Thompson, Loyzelle Haffner, Thelma Smith, Mona Chick.

Front row: Irene Groh, Lorraine Stanley, Helen McCowen, Lillian Barney.

Not pictured: Violet Preston.







PRESENTING THE CLASS OF 1946

PRESIDENT . . . JOHN SOMMER

VICE PRESIDENT . . . TED REESE

SECRETARY . . . BETTY POLLOCK

TREASURER . . . PAULINE PACE



Seniors

REVA JEAN BAILEY
"Jeanie"
 Booster Club 4; Double Quartet
 4; G.A.A. 3, 4; Glee Club 1, 2, 3,
 4; Library Club. 2.

EUGENE BENNETT
"Shene"
 Aviation Club 3; Baseball 1, 2,
 3, 4; Basketball 1, 2, 3, 4; "For
 Pete's Sake" 3; Glee Club 1, 2, 3, 4;
 Math Club 3; Scholarship Team 3;
 Student Council 4; Varsity "W" 2,
 3, 4.



KARL BESCOE
"Bescoe"



ROBERTTA BLAIR
"Buzz"
"For Pete's Sake" 3; Glee Club
 1, 2, 3, 4; Office Force 4; Sigma
 Tau Pi 4.



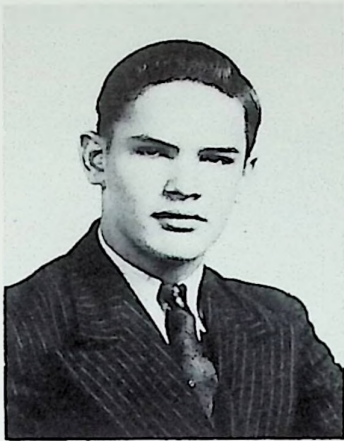
DONALD BOLANDER
"Duck"
 Booster Club 4; East High 1, 2;
"For Pete's Sake" 3; Hall Moni-
 ter 3.

WILMA JEAN BRADLEY
"Jean"
 Booster Club 3, 4; G.A.A. 1, 2,
 3, 4; Sigma Tau Pi 4.



ANNA PEARL BURGESS
"Minnie Pearl"
 Booster Club 4; G.A.A. 3, 4; Glee
 Club 1, 2; Sigma Tau Pi 4.

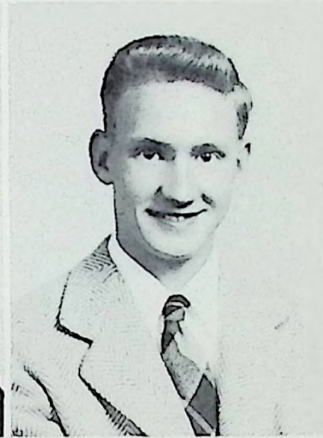
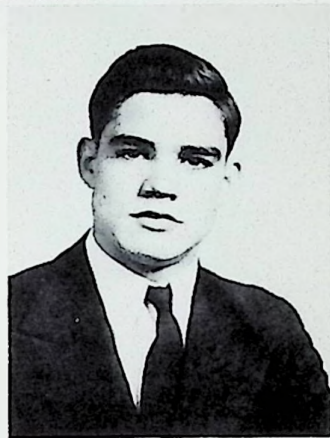
SENIORS



HOWARD CAMPBELL
"Soupy"
 Booster Club 4; Intramural 4;
 Minford High School 1; Ports-
 mouth High School 2, 3.

HERBERT CARVER
"Herby"
 Aviation Club 2, 3; Booster
 Club 4; Glee Club 1, 2, 3, 4; Li-
 brary Club 3.

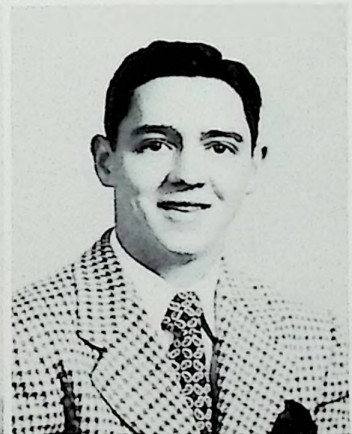
OTIS WISE CHRISTIAN
"Kris"
 Booster Club 3, 4; *"For Pete's
 Sake"* 3; Glee Club 1, 2, 3, 4; Li-
 brary Club 1, 2; Office Force 3, 4;
 Quartet 3, 4.



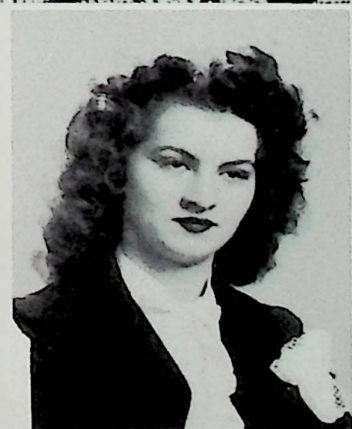
RAY CONLEY
"Wild Cat"
 Baseball 3, 4; Basketball 2, 3, 4;
 Class Treasurer 2; Drum Major 3,
 4; Glee Club 1, 2, 3, 4; Office
 Force 1; Student Council 2; Varsity
"W" 2, 3, 4.

JAMES LESLIE CRAMER
"Less"
 Basketball 2, 3, 4; Class Presi-
 dent 3; *"For Pete's Sake"* 3; Glee
 Club 1, 2, 3, 4; Math Club 3, 4;
 Scholarship Team 2, 3.

DAVID CRAYCRAFT
"Rookie"
 Baseball 1, 2, 3, 4; Basketball 1,
 2, 3, 4; *"For Pete's Sake"* 3; Glee
 Club 1, 2, 3, 4; Varsity *"W"* Club
 3, 4.



FAYE CAROLYN FRALEY
"Red"
 G. A. A. 3, 4; Glee Club 1, 2, 3,
 4; Hall Patrol 2; Majorette 3, 4;
 Office Force 1, 2; Sigma Tau Pi 4.



SENIORS

HELEN GILKISON
"Heck"
G. A. A. 4; Hall Patrol 3.



KATHALEEN GLEIM
"Gleim"
*Booster Club 4; G.A.A. 2, 3, 4;
 Library Club 1; Math Club 2, 3, 4;
 Scholarship Team 1, 2, 3, 4; Sigma
 Tau Pi 4; Usherett 4.*



VELMA IRENE GLEIM
"Bubby"
*Annual Staff 4; English Club 2;
 G.A.A. 2, 3, 4; Girls' Ensemble 4;
 Glee Club 3, 4; Hall Monitor 3;
 Library Club 2; Math Club 3, 4;
 Newspaper Staff 4; Scholarship
 Team 1, 2, 3, 4; Sigma Tau Pi 4.*

NORMA MAPLE
"Maple"
*Booster Club 4; G.A.A. 2, 3, 4;
 Glee Club 1, 3, 4; Library Club 2;
 Office Force 1; Sigma Tau Pi 4;
 Usherett 4.*



TESSIE JOLEANE MAUCK
"Jo"
*Booster Club 4; Charleston High
 School 1; Glee Club 3, 4; Hunting-
 ton High School 2; Sigma Tau Pi
 4; Winner of Local Prince of Peace
 Contest 4.*

WILBUR MATTHEW MAUK
"Monkey"
*Band 2, 3, 4; Basketball 3, 4;
 Glee Club 1, 2, 3, 4; Library Club
 2; Varsity "W" Club 4.*



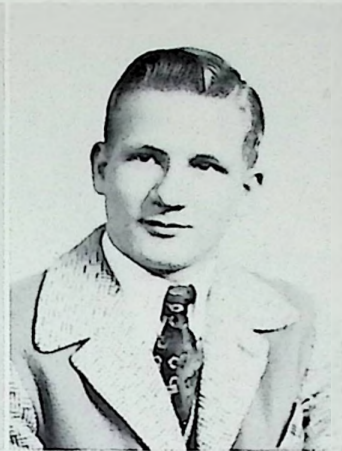
JOHN MILLER
"Johnnie"
*Basketball 3; Booster Club 4;
 "For Pete's Sake" 3; Glee Club 4;
 Hall Monitor 3; Library Club 4;
 Math Club 3, 4; Office Force 4.*

SENIORS



JANET MARIE MOLEN
"Tarzan"

Booster Club 2, 3, 4; G.A.A.
President 2, 3; Glee Club 1, 2, 3,
4; Home Ec. Club Treasurer 2, 3;
Sports Club 1, 2.



ROBERT MORGAN
"Bob"

Basketball Manager 2, 3, 4; "For
Pete's Sake" 3; Glee Club 2, 3; In-
dustrial Arts Club 1, 2; Student
Council 2, 3; Varsity "W" Club
2, 3, 4.

A. RICHARD MULLINS
"Moon"
Booster Club 4; Glee Club 4;
Newspaper Staff 4; Washington
High School 1, 2, 3.



CAROLYN OVERHOLTZER
"Carolyn"
G.A.A. 4

PAULINE PACE
"Billy"

Booster Club 3, 4; Class Treasurer
3, 4; East High School 1; G.A.A.
1, 2, 3, 4; Glee Club 1, 2, 3, 4;
Hall Patrol 2, 3; Math Club 3, 4;
Office Force 3, 4; Vice President
3, 4.

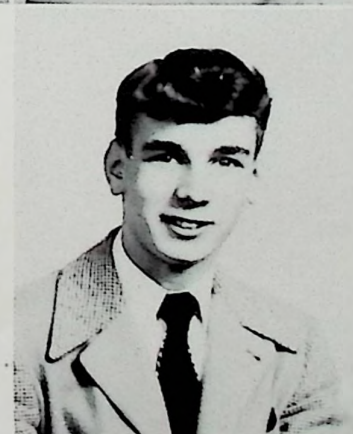
BETTY JOAN POLLOCK
"Pottie"

Annual Staff 4; Band 1, 2, 3, 4;
Booster Club 3, 4; English Club 2;
"For Pete's Sake" 3; G.A.A. 2, 3,
4; Glee Club 1, 2, 3, 4; Math Club
2, 3; Newspaper Editor 4; Office
Force 1, 3, 4; Quartet 3, 4; Secre-
tary of Class 2, 3, 4; Sigma Tau
Pi 4.



THEODORE REESE
"Ted"

Basketball 2, 4; English Club 2;
Glee Club 1, 2, 3; Math Club 2,
3, 4; Scholarship Team 2, 3, 4; Stu-
dent Council 2, 4; Varsity "W"
Club 4.



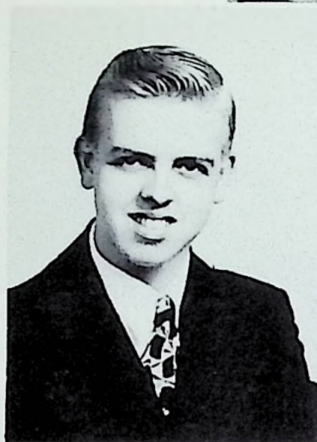
SENIORS

REATHA RATCLIFF
"Reathe"
 Booster Club 4; "For Pete's Sake"
 3; G.A.A. 3, 4; Glee Club 1, 3, 4;
 Home Ec. Club 1.

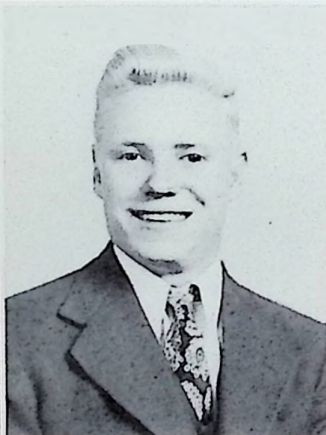
IMOJEAN SALLY
"Jean"
 G.A.A. 3; Home Ec. Club 1;
 Sigma Tau Pi 4.



CHARLES TAYLOR SETTERS
"Charlie"
 Aviation Club 1, 2, 3; Booster
 Club 3; "For Pete's Sake" 3; Glee
 Club 1, 2, 3, 4; Library Club 1, 2;
 Math Club 3, 4; Quartet 4; Scholar-
 ship Team 2.

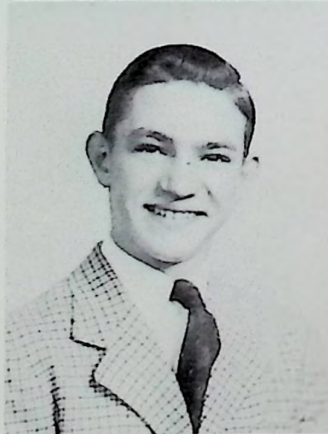


JOHN SHERMAN
"Johnny"
 Annual Staff 4; Baseball Man-
 ager 1, 2; English Club 2; Math
 Club 3, 4; Scholarship Team 1, 2,
 3, 4; Varsity "W" 3.



BETTY LOUISE SKAGGS
"Johnnie"
 Booster Club 4; G.A.A. 4; Glee
 Club 3, 4; Home Ec. Club 1, 2;
 Library Club 1, 2, 3; Newspaper
 Staff 4; Scholarship Team 2; Sigma
 Tau Pi 4.

GEORGE F. SMITH
"Smicky"
 Basketball Manager 3, 4; "For
 Pete's Sake" 3; Industrial Arts Club
 1, 2; Varsity "W" Club 4.



JOHN SOMMER
"Jack"
 Annual Staff 4; Aviation Club 2;
 Booster Club 3, 4; Class President
 4; "For Pete's Sake" 3; Scholarship
 Team 1, 2, 3; Student Council 3, 4.

SENIORS



LOWELL STAKER

"Louie"

Band 1, 2, 3, 4; Baseball 1, 2, 3, 4; Basketball 1, 2, 3, 4; Glee Club 2, 3, 4; Library Club 1; Math Club 3, 4; Quartet 3, 4; Scholarship Team 1, 2; Varsity "W" 2, 3, 4.

RUBY JEAN STAMPER

"Pet"

G.A.A. 3, 4; Hall Patrol 3, 4; Majorette 4; Sigma Tau Pi 4.

RUTH STAMPER

"Toddy"

G.A.A. 3, 4; Hall Patrol 3; Newspaper Staff 4; Sigma Tau Pi 4.



DONALD THIEKEN

"Don"

Booster Club 4; Glee Club 1, 2, 3, 4; "For Pete's Sake" 3; Safety Patrol 1, 2, 3.

MARY THIEKEN

"Mary"

Home Ec. Club 1, 2; Sigma Tau Pi 4.

LOIS THOMPSON

"Lois"

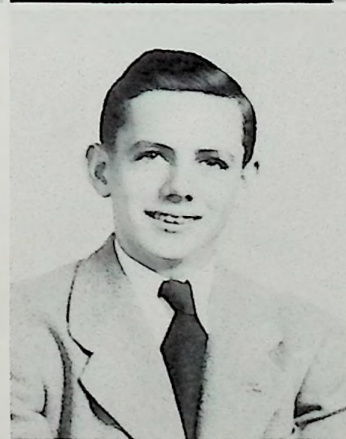
Annual Staff 4; English Club 2; "For Pete's Sake" 3; Glee Club 1, 2, 3, 4; Library Club 1; Office Force 3, 4; Scholarship Team 1, 2, 3; Sigma Tau Pi 4.



DAVE THORNTON

"Dean"

Annual Staff 4; Booster Club 4; "For Pete's Sake" 3; Glee Club 1, 4; Hall Monitor 3; Library Club 4; Math Club 3, 4; Office Force 4.

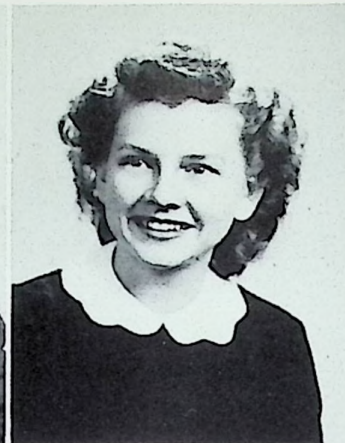
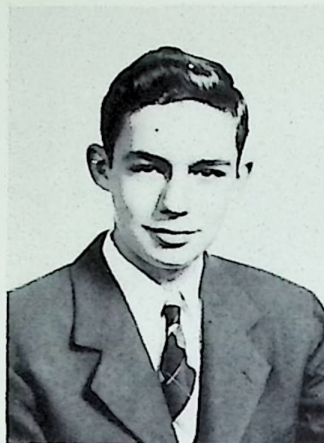


SENIORS

JAMES M. TURNER

"Jim"

Basketball 3; "For Pete's Sake"
3; Industrial Arts Club 1, 2; Li-
brary Club 2.



MARY LOUISE VAN HORN

"Cookie"

Annual Staff 4; Band 1, 2, 3, 4;
Booster Club 3, 4; Cheerleader 4;
Class Secretary 1; English Club 2;
"For Pete's Sake" 3; G.A.A. 1, 2,
3, 4; Girls' Ensemble 4; Glee Club
1, 2, 3, 4; Math Club 2; News-
paper 4; Office Force 2; Quartet 3,
4; Scholarship Team 1; Sigma Tau
Pi 4; Student Council 1.



VIRGINIA WATTS

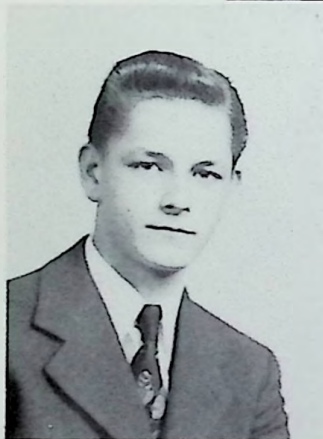
"Ginny"

Annual Staff 3, 4; Booster Club
4; English Club 2; "For Pete's
Sake" 3; Glee Club 1, 2, 3, 4; Li-
brary Club 1; Office Force 3, 4;
Scholarship Team 1, 2, 3; Sigma
Tau Pi 4.

GRETCHEN KAREN WERNER

"Gretch"

Booster Club 3, 4; G.A.A. 2, 3,
4; Glee Club 3, 4; Home Ec. Club
2; Sigma Tau Pi 4.



DONALD WILSON

"Don"

"Booster Club 4; Senior Chorus
4; South Amherst High School 1, 2.

MARY LOUISE YORK

"Lou"

Booster Club 3, 4; President 3;
Cheerleader 1; "For Pete's Sake" 3;
G.A.A. 2, 3, 4; Glee Club 2, 3, 4;
Home Ec. Club 1, 2; Sigma Tau
Pi 4.



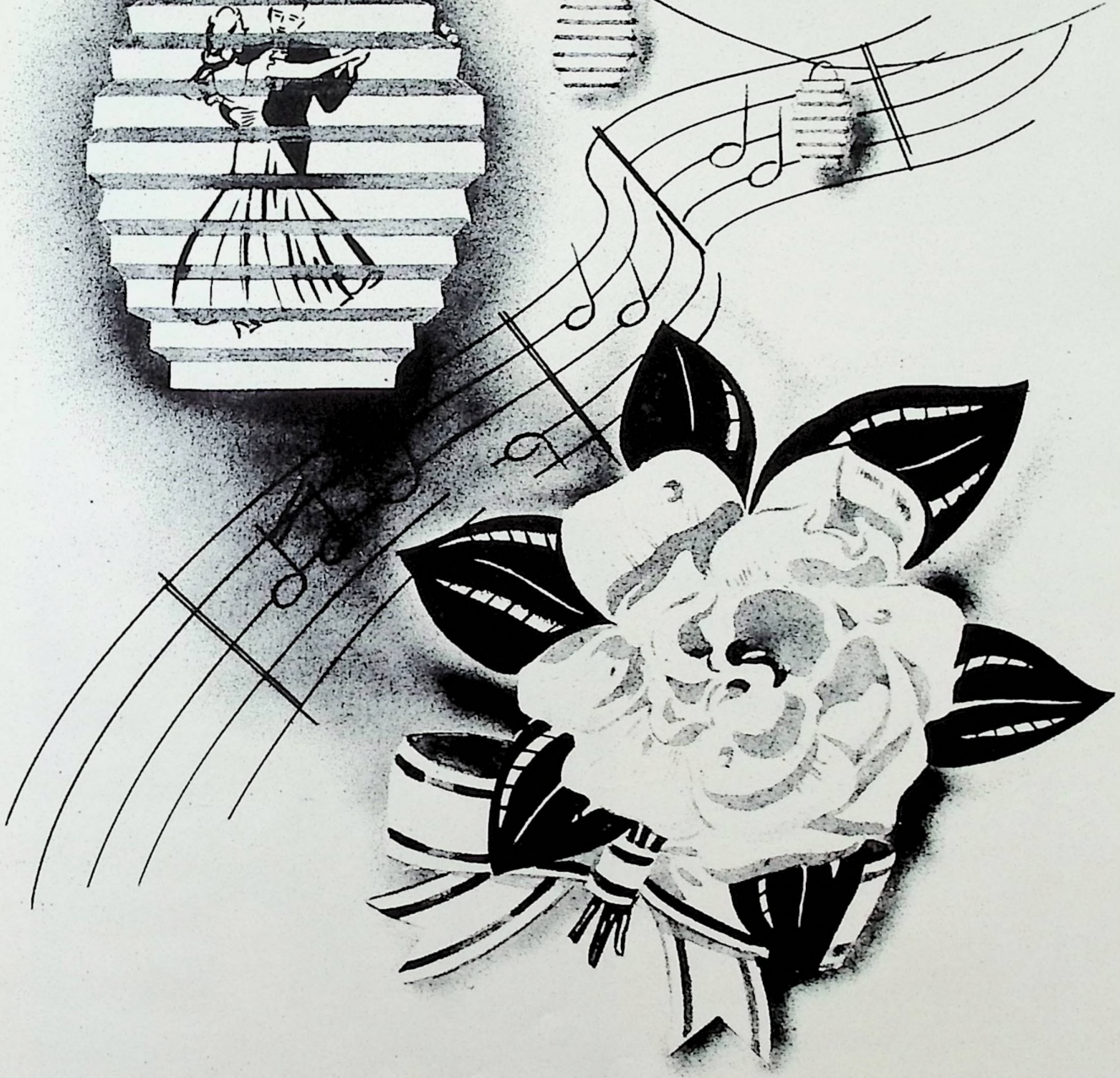
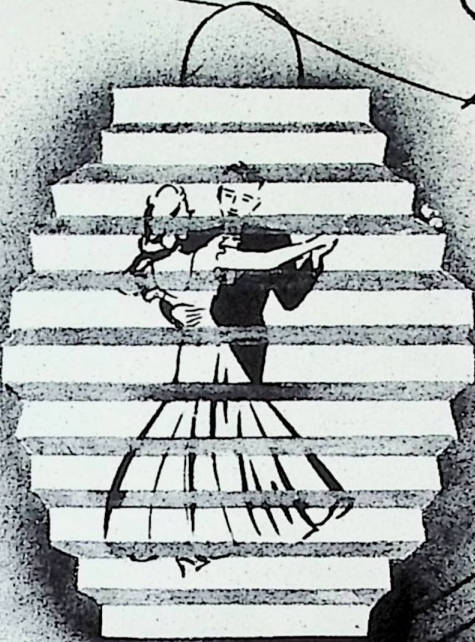
VERN YOUNG

"Red"

Baseball 2, 3; Basketball 3;
Booster Club 4; Industrial Arts
Club 1, 2; Library Club 4; Varsity
"W" Club 3.

SENIORS

Juniors



JUNIORS

Ethel Adams



Don Arbaugh

Ada Barber



Norma Bennett

Donald Billups

Marie Booth



Mary Jane Bowen

Paul Brown

Ronald Brown



Lloyd Caudill

Judy Carter

Forrest Colegrove



Vera Downs

Betty Fraley

Juanita Fraley

Adah Harper



Alma Harper

Richard Harner

Gwendolyn Hansgen

Bob Hammond



Charles Hall

Joyce Johnson

Dorothy Johnson

Wilma Lou Johnson

Wilma Jean Johnson

Jean Jones

Mary Ann Ketter

Karl Kinker



JUNIORS



Jim Lambert



Harold Lawson



Della Lewis



Jane Lyon



J. T. Mauck



Howard McHenry



Eula McCleese



Norma Montavon



Stanley Myers



Marcella Ockerman



Betty Price



Jeanne Purtee



Barbara Reidenbach



Norman Reiter



Ralph Roberts



Dorthea Rogers



Willa Jean Staggs



Ralph Staten



Herb Strickland



Lawrence Thieken



Delores Thompson



Lucille Townsend



Ena Mae Wagner



Edward Williams



Betty Lou Williams



Kathleen Williams



Raymond Woodrum



Barbara Wright

Sophomores





SOPHOMORES

First Row:

Maxine Bailey, Winifred Baker, Jean Bihl, Irene Blair, Erwin Blanton, Phyllis Bowen,
Teresa Burgess.

Second Row:

Donna Burke, Russell Colegrove, Opal Courtwright, Delores Cramer, Earl Downs, R. T. Ellis,
Nick Felty.

Third Row:

Bob Flanigan, Julia Fout, Joe Gann, Jim Glascock, Ralph Green, Jean Hacker, Thelma Hay.

Fourth Row:

Kathryn Hinds, Imogene Hull, Geraldine Jarvis, Norma Johnson, Sarah Johnson, Don Justice,
Geneva Keeton.

Fifth Row:

Bob Klingman.

First Row:

Junior Knapp.

Second Row:

Joan Lallow, Phyllis Lang, James Lawson, Helen LeMaster, Opal Maggard, David McCarty,
Jane McLeod.

Third Row:

Doris Jean McFerren, Don Miller, Betty Moore, Mary Ann Moore, Ruth Mucha, Neil Reasor,
Bob Reese.

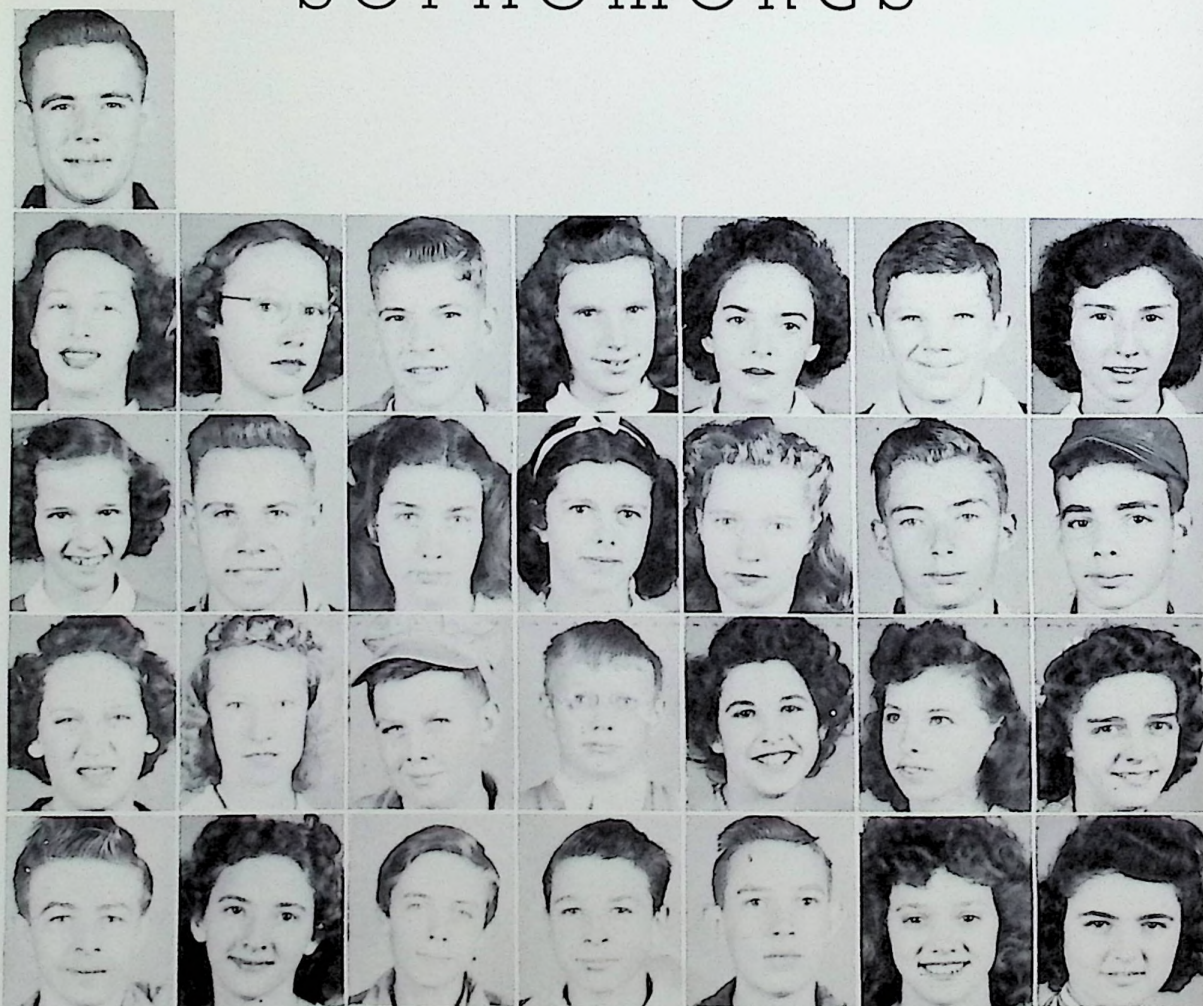
Fourth Row:

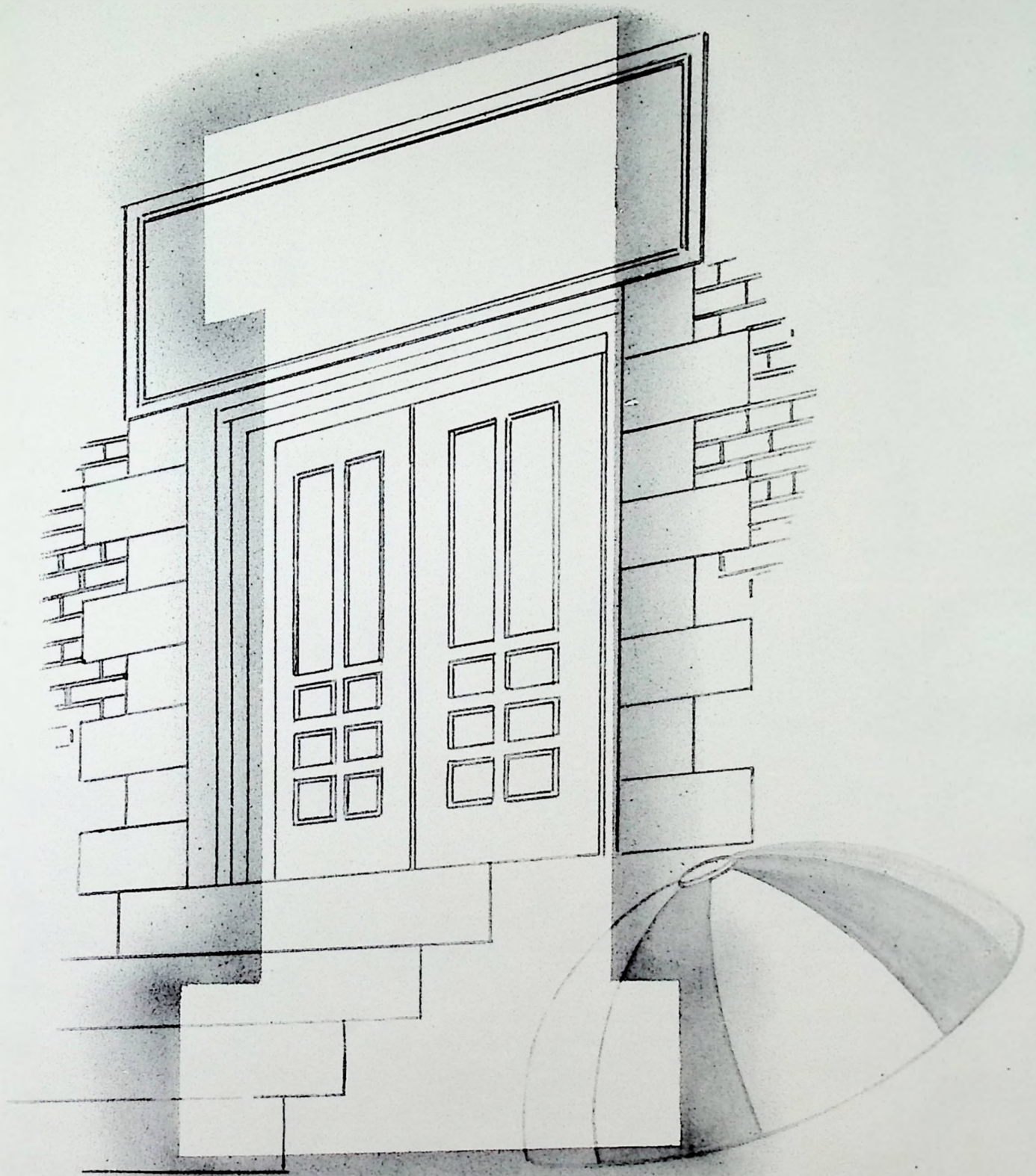
Thelma Rockwell, Georgia Sally, Bobby Joe Scherer, Bill Simon, Patty Smith, Maxine Staggs,
Lorena Stone.

Fifth Row:

Charles Thompson, Juanita Weidner, Frank Wicker, Eldon Wilder, Karl Willard,
Darlene Wright, Norma Yelley.

SOPHOMORES





Freshmen



FRESHMAN

First Row:

Loretta Armes, Jerry Bailey, Naomi Baisden, Thelma Barber, Beulah Blevins, Jimmy Bennett,
James Benson, Agnes Blanton.

Second Row:

Betty Bond, Betty Lou Booth, Tom Bowen, Bill Caudill, Rosemary Cleary, Billie Lois Conley,
Raymond Conley, Rosemary Collingsworth.

Third Row:

Maurice Cremeans, Grace Crabtree, Hazel Craft, Robert Delebar, Don Ellis, James Evans,
Patty Fairchild, Betty Fisher.

Fourth Row:

Ralph Frazie, Jo Ann Gilpin, James Gilkison, Maurita Gleim, Donald Gleim, Charlotte Green,
Kenneth Green, Edith Hacker.

Fifth Row:

Marcelline Hall, Gerald Hall, Bill Hall, Kathryn Hammond, Betty Hensley, Don Hoover.

FRESHMAN

First Row:

Paul Ishmael, Jewel Jarvis, James Kidd, Jack LeMaster, Frances Lewis, Norma Lykins.

Second Row:

Frances Martin, Bob Mauck, Joe Merrill, Martin McFerren, Juanita Monroe, Joanne Purtee,
Jesse Ramey, Paul Riggs.

Third Row:

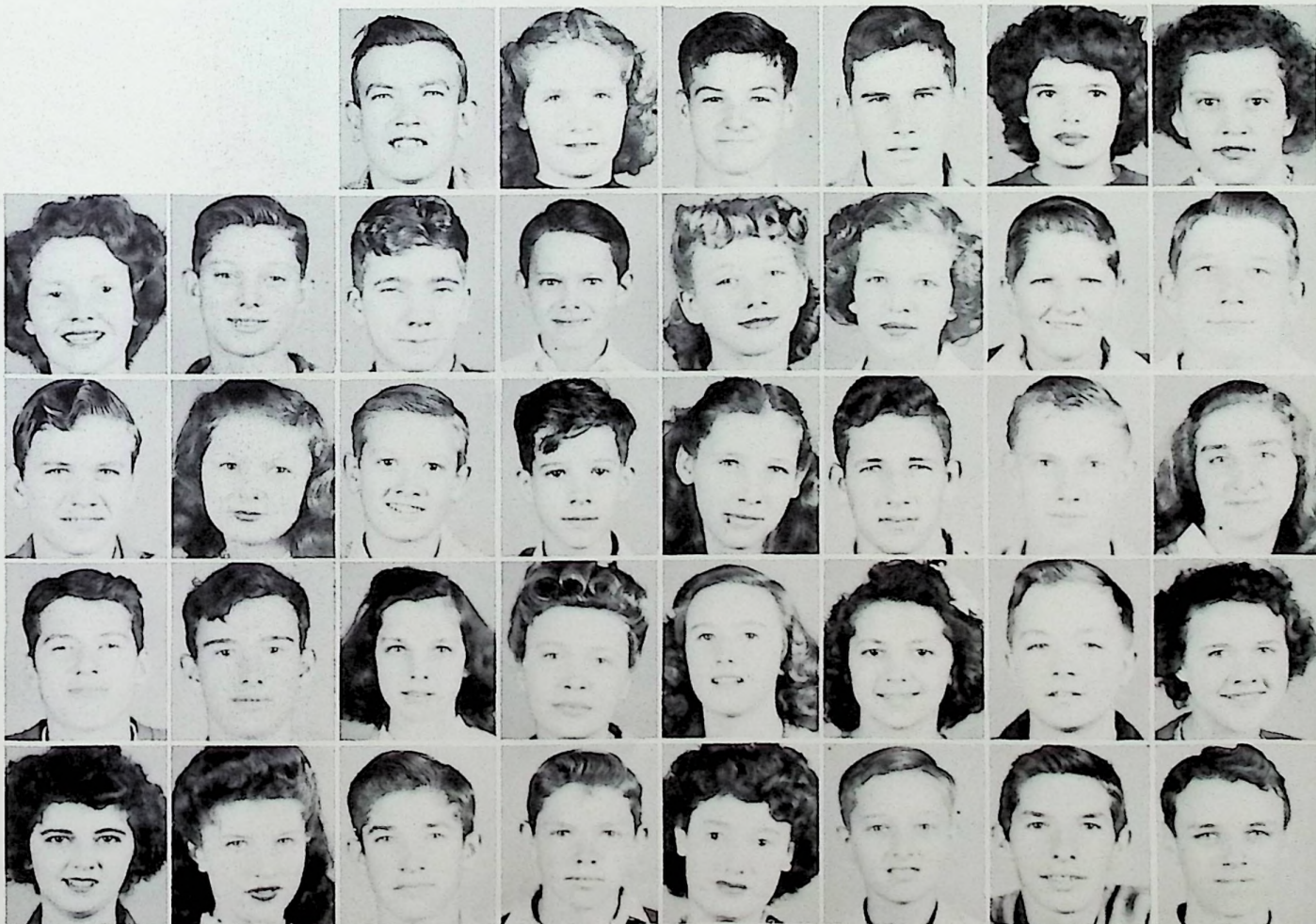
Lovell Ruggles, Lillian Sagraves, Paul Setters, Ed Shelton, Lucy Skaggs, Ed Skiver,
Adrian Slone, Mary Ann Smith.

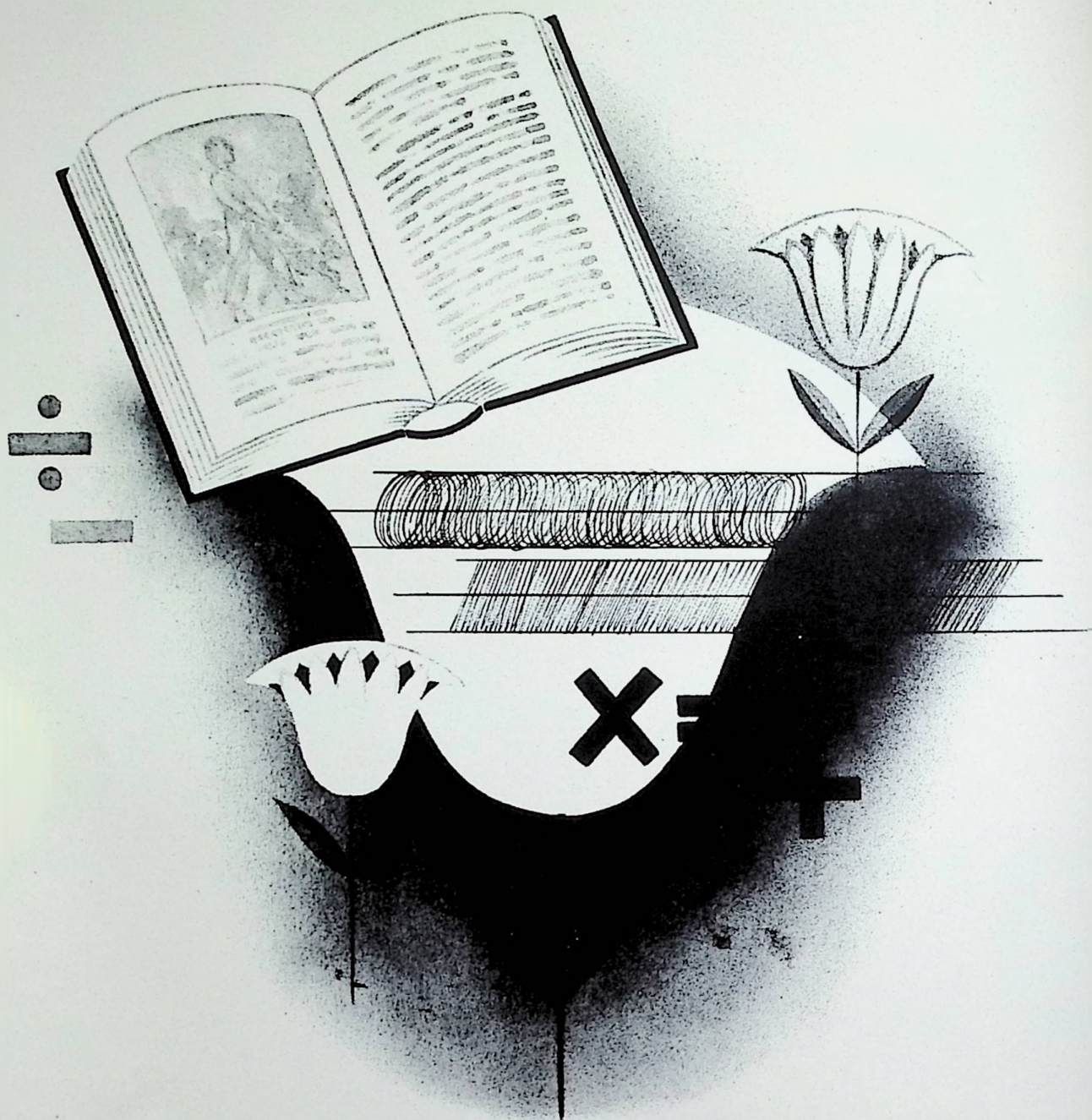
Fourth Row:

Sidney Smith, Don Smith, Juanita Staggs, Imogene Taylor, Barbara Thompson, Anna Thicken,
Joe Turner, Janet Turner.

Fifth Row:

Geneva Webb, Juanita Wright, Wade Wright, Ralph Wright, Joan Wright, Ernest Williams,
Don Williams, Clarence Wente.





EIGHTH



EIGHTH GRADE

First Row:

Gale Aeh, Richard Aeh, Betty Arthurs, Mabel Blanton, Robert Blanton, Junior Braden,
Junior Burgess.

Second Row:

Donald Chick, Mary Ruth Christian, Anna Clark, Joe Cochran, Florence Crabtree,
Willard Crabtree, John DeCamp.

Third Row:

Peggy DeCamp, Carol Dheel, Patty Dutiel, Ina Erwin, Billy Flanagan, Elizabeth Hall, Donna Haws.

Fourth Row:

Virginia Hayes, Bob Hibbitts, Vaughn Holbrook, Janet Hoover, Patty Hughes, Arnold Jenkins.

Fifth Row:

Donald Johnson, Jim Keeney, Emma Lambert, Allard Lawson.

Sixth Row:

Billy Litz, Howard Lyons, Joan Mahan, Charles Mauck.



EIGHTH GRADE

First Row:

Lewis Mauck, Emil McHenry, Helen Miller, Emma Jean Pierce, Roger Lee Mullins, Joan Munyon,
Jimmy Parlin.

Second Row:

Rachel Pauley, Lillian Phipps, Harold Montavon, Bob Pyles, Jack Ridings, Edna Ruggles,
Gerald Ruggles.

Third Row:

Rosalind Scott, Donald Setters, Gertrude Sherman, Betty Skeens, Howard Staker, Jack Stanley,
Jessie Stanley.

Fourth Row:

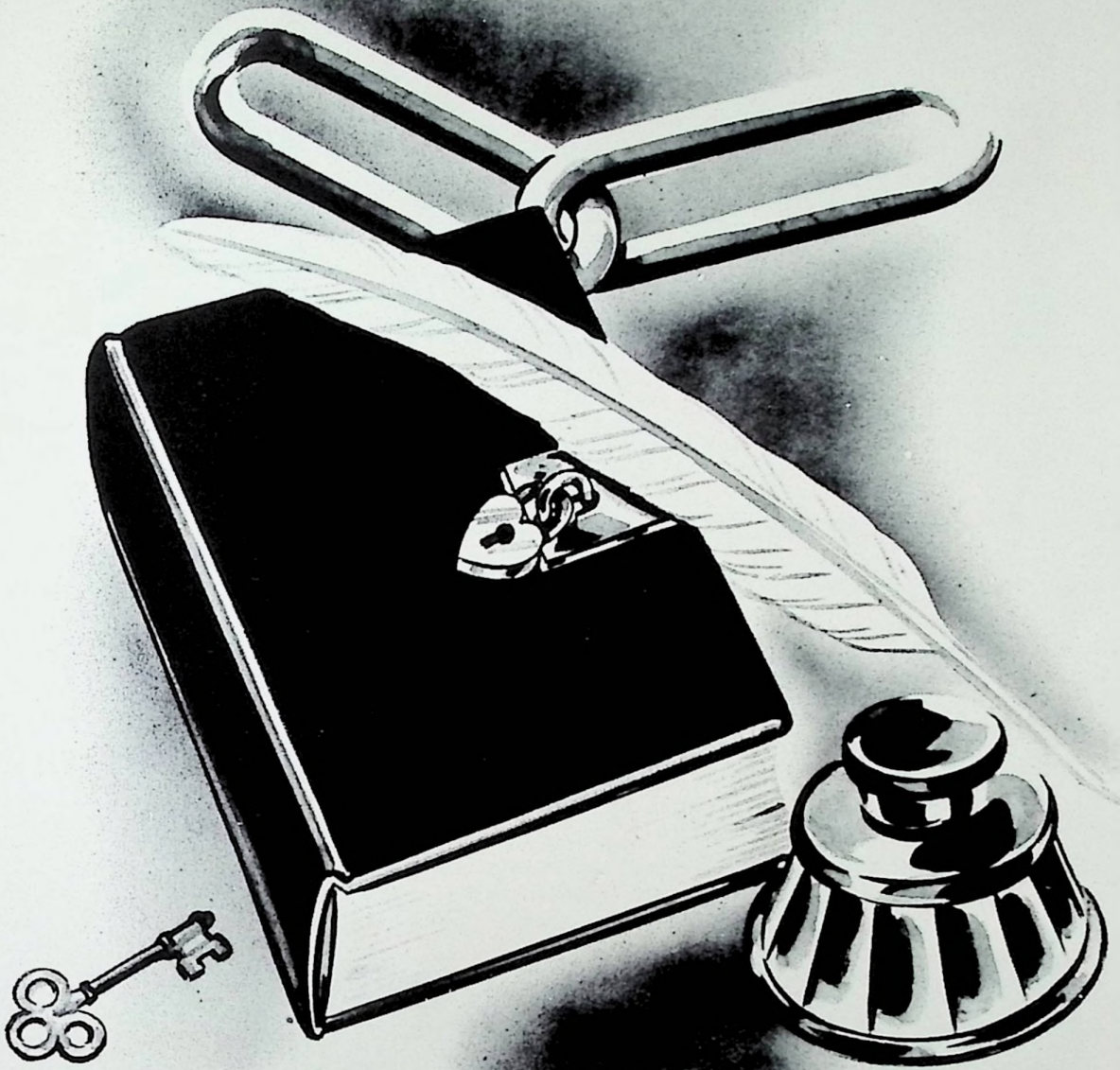
Henry Taulbee, Donald Thompson, Betty Tussey, Jim Tussey, Patty Vines, Max Warnock.

Fifth Row:

Josephine Weddington, Sonny Wellman, Jackie White, Paul Willard.

Sixth Row:

Holly Williams, Barbara Wright, Marcella Wright.



SEVENTH



First Row:

Beulah Armes, Earl Benson, Harold Billups, Edith Blair, Joy Blanton, Joan Bolander, Alice Boyer.

Second Row:

Bobby Braden, Mabel Bradley, Eva Brown, Patty Brown, Delores Colegrove, Lucille Collins.

Third Row:

Goldie Courtright, Audrey Craft, Naomi Craft, Ray Danes, Frances Davidson, Bernard Evans.

SEVENTH GRADE

First Row:

Betty Felty, John Fraley, Ralph Gallion, Jack Green, Dorothy Hall, Wilda Hammond.

Second Row:

Wilma Hammond, Joan Hatten, Marvin Hay, Mary Hayslip, Barbara Hinds, Leona Howard.

Third Row:

Leonard Jarvis, Wilma Justice, David Lang, Judy LeMaster, Anna Lou Litteral, Earl Lockhart, Jack Maynard.





First Row:

Ronnie McCowen, Janet McDaniel, Janice McDaniel, Ruth Miller, Helen Montavon,
Milton Moore, Nellie Nelson.

Second Row:

Marceline Nylund, Edward Orlett, Sally Pace, Irene Pennington, Richard Pennington, Bobby Phipps.

Third Row:

Delmar Plummer, Betty Lou Pyles, Jo Ann Riggs, Loraine Roberts, Pauline Rockwell,
Doris Jean Ross.

SEVENTH GRADE

First Row:

Donald Ruggles, Byrle Sagraves, Willard Sargent, Charlotte Salley, Kathleen Sexton, Bobby Simon.

Second Row:

Robert Skaggs, Wells Smith, Helen Sommer, Etta Lou Staggs, Clarence Stewart, Barbara Strickland.

Third Row:

Agnes Thornton, Mary Lu Turner, Naomi Turner, Dorothy Watts, Aldon Wilder,
Rachel Williams, Geraldine Wright.



INTRODUCING FEATURES

THE CHRISTMAS STORY

This Christmas the annual Christmas program was presented under the direction of Mrs. Thompson, assisted by the teachers of the upper building. The music was conducted by Mrs. McGowan. It was a most impressive and inspiring program, giving the story of the birth of Jesus. Over one hundred carolers supplied the background for the story. We are truly grateful to the children who participated in this program and to those teachers who made it possible.





1st row: Velma Gleim, Janice McDaniels, Doris Ross, Helén Montavon, Wilda Hammond, Wilma Hammond, Delores Colegrove, Patty Smith, Wells Smith, Bob Simon, Virginia Watts.

2nd row: Lois Thompson, Betty Pollock, Mary Van Horn, Jane McLeod, Joleane Mauck, Kathaleen Gleim, Norma Montavon, Kathleen Williams, Anna Thieken, Janet Turner.

3rd row: Royal Fritz, Jack Sommer, John Sherman, Norman Reiter, Joe Merrill, Don Justice, Forrest Colegrove, Paul Ishmael.

SCHOLARSHIP TEAM

Do you need any help on your English—maybe it's in Math you need assistance? Anyway these are the ones who know all the answers. They are the ones who had an average semester grade in each subject above ninety per cent! And is W.H.S. proud of them? You can bet we are! They are tops to us. Bringing honor to our school through a high scholastic standing is really commendable. From this group will be selected in most cases those who will represent Wheelersburg in the state scholarship tests given in April. We know they will again hold high the torch of learning and once again W.H.S. will be at the top.



Seated: Mary Ann Ketter, Jane Lyon.

Second Row: Norma Montavon, Gwendolyn Hansgen, Ada Barber, Adah Harper, Alma Harper, Willa Staggs, Dolores Thompson, Marie Booth, Miss Shela.

Third Row: Mr. See, Jim Lambert, Karl Kinker, Harold Lawson, Forest Turner.

JUNIOR PLAY

"DAMSELS IN DISTRESS"

CAST

| | |
|------------------------------|-----------------|
| Pam Royle..... | Jane Lyon |
| Gerry Ware..... | Mary Ann Ketter |
| Mrs. Meeks..... | Barb Reidenbach |
| Mrs. Guppy..... | Ada Barber |
| Natasha Federovna..... | Mary Bowen |
| Jimmy Love..... | Karl Kinker |
| Shelby Parsons..... | Jim Lambert |
| Aunt Eustacia Carstairs..... | Adah Harper |
| Braymer Babcock..... | J. T. Mauk |
| Ethelbert Meeks..... | Harold Lawson |
| Mike..... | Ralph Staten |
| Bill..... | Forest Turner |

| | |
|-------------------------|---|
| Understudies | Alma Harper, Kathleen Williams |
| Student Directors | Marie Booth, Norma Montavon |
| Make Up | Willa Staggs, Alma Harper |
| Stage Managers | Ed Williams, Don Billups, Harold Lawson, Forest Turner, Ralph Staten |
| Advertising | Delores Thompson, Lucille Townsend |
| Sponsors | Elva Shela, J. H. See |

SENIOR PLAY

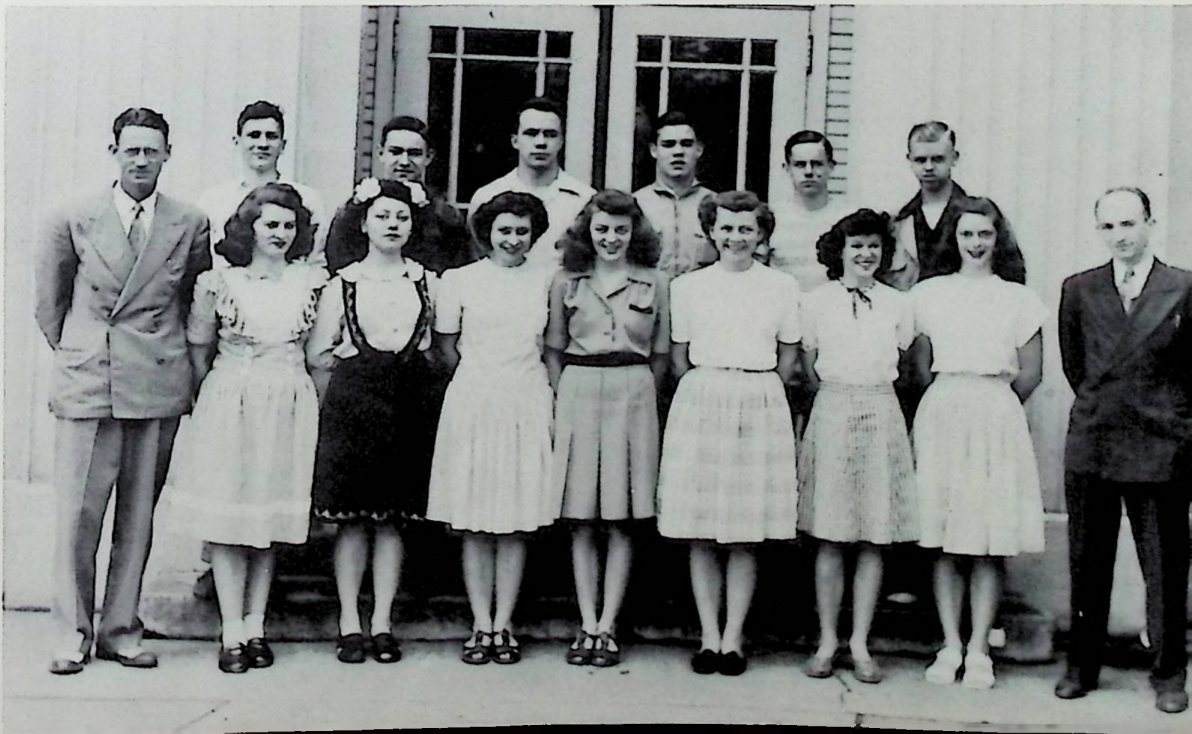
"GHOST WANTED"

CAST

| | |
|--------------------------|-----------------|
| Hugo Bromley..... | Charles Setters |
| Jeffrey Hall..... | Jack Sommer |
| Gale Stormgay..... | Betty Skaggs |
| Ginger Stormgay..... | Roberta Blair |
| Troddy, The Maid..... | Faye Fraley |
| Hatcher..... | Richard Mullins |
| Granny Kate..... | Reatha Ratcliff |
| Professor de Vallan..... | Dave Thornton |
| Madam Zolga..... | Betty Pollock |
| Nora Vane..... | Ruby Stamper |
| Mr. Bradshaw..... | John Miller |
| Azalea..... | Mary Van Horn |
| Monster..... | Otis Christian |

Directors: Mr. Preston, Mr. McCowen

Back Row: Richard Mullins, Jack Sommer, John Miller, Otis Christian, Dave Thornton, Charles Setters.
Front Row: Mr. Preston, Faye Fraley, Reatha Ratcliff, Betty Skaggs, Betty Pollock, Mary Van Horn, Ruby Stamper, Roberta Blair, Mr. McCowen.



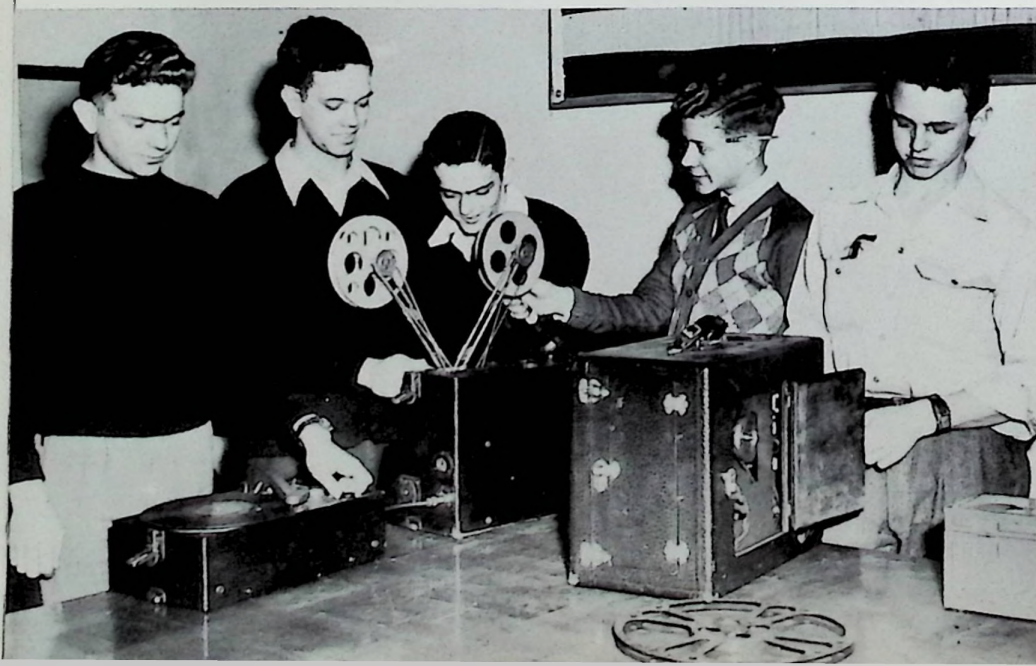


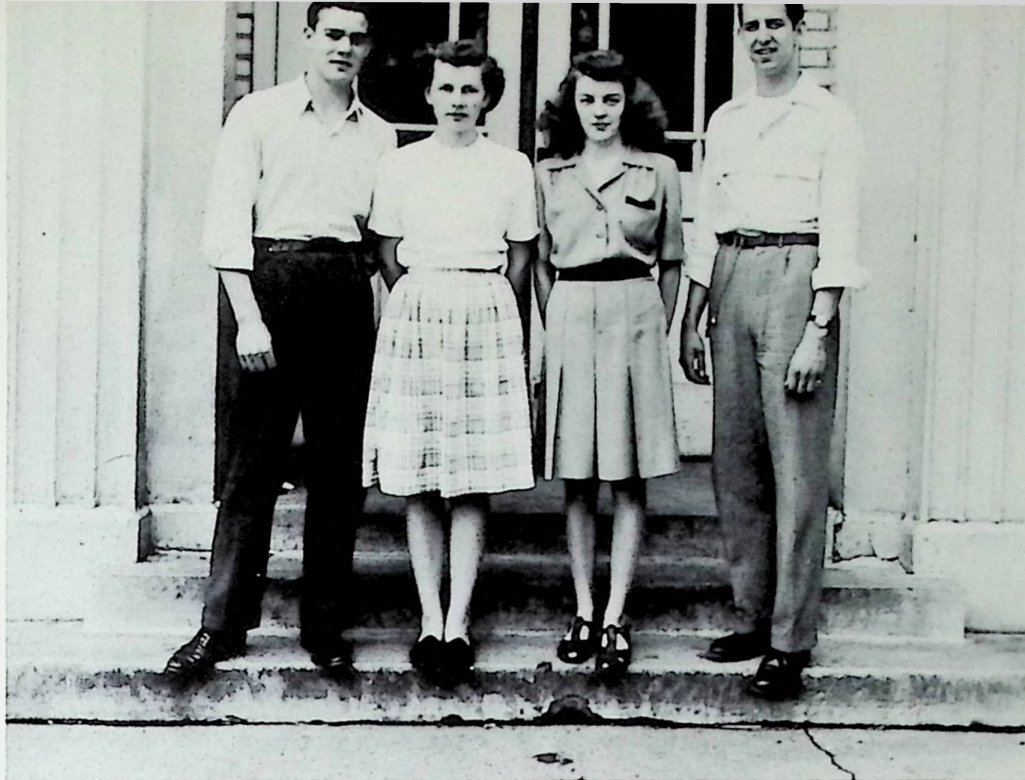
USHERETTES

Norma Maple, Kathaleen Gleim, Jean Bailey.

VISUAL EDUCATION

Lloyd Caudill, Don Billups, Roy Ellis, Royal Fritz, Joe Gann.





QUARTET

Otis Christian, Mary Van Horn, Betty Pollock, Lowell Staker.

GIRLS' ENSEMBLE

Back Row: Delores Cramer, Kathleen Williams, Jean Bihl, Willa Staggs, Alma Harper.
Front Row: Eulah McCleese, Mary Van Horn, Velma Gleim, Adah Harper, Gwendolyn Hansgen, Virginia Watts.



THE VISION IN ROOM 39

It was April twenty-second,
And the sunny outdoors beckoned
To the drowsy, dull-eyed students
At their desks in thirty-nine.
Though the silence was unbroken
By a word in loudness spoken,
Yet the buzzing sound of whispers
Did ambition undermine.

There I sat, no thought disturbing,
No suggestion I be curbing
Any idleness that seems to
Come to everyone, I'm told.
Eyelids closing, I was dozing,
Into arms of sleep reposing,
Head I dropped upon the table
And this vision did behold.

Near the place where I was standing
Was a group of people banding.
As they neared I saw that they
Were quite unlike the common sort.
For their costumes and their faces
Came from other times and places,
And the feeling that their hearts were cold
Their looks did well support.

For in all this congregation
There was found no intimation
Of a friendly soul to whom the
Title "gentle" might apply.
But I looked and was astounded;
And my wonder was unbounded,
As I saw the teardrops falling
Blandly from each half-closed eye.

Up I spoke in anxious query,
"Why is it that you're so dreary?
For it seems that all compassion
You would hold in calm disdain."
"Truly sir," the crowd responded,
"We have only now absconded
To this lonely hiding place to try
To hold our tears in vain."

"We have just come back from viewing
Things that are our hearts subduing.
Where have we been? We've just returned
From Wheelersburg High School.
We've seen the poor, mistreated, students
Being punished without prudence,
And their calm, angelic conduct
Being held in ridicule."

Eyebrows raised, I listened closely.
Then the crowd grew dim and ghostly,
And left standing in the foreground
Two tall men in strange attire.
One spoke, saying, "We were pirates
Whose deeds brought a wealth of 'tut-tuts'
From some men, while others spoke
Of us in tones of greater ire."

"For we tortured friends and foes,
Hanging them by thumbs or toes.
And we made our captives leap
Into the shark-infested seas.
Against our kin we did conspire,
Set their barns and homes afire.
Never pity stirred our hearts
As we listened to their pleas."

"Only once in all these years
Have our eyes been dimmed with tears.
It was at the school of Wheelersburg
From where we've just returned.
We have seen the teachers making
Rules the pupils can't help breaking,
And then punish them with drastic steps
When these mandates they spurned."

Upon the pirates cold mist closed,
And my vision was transposed
To a dark-haired, cold-eyed lady
Who stood plainly in my view.
She said, proudly, "I have gained,
And by working have maintained
A high position in our group;
Just how, I shall reveal to you."

"I have lived most all my life
A childless and a widowed wife;
For my husband dear I poisoned,
And my children I did drown.
Both these deeds I did with ardour;
I was stoic as a martyr;
For my heartlessness and apathy
Were known throughout the town."

"But when I saw the pupils' plight
At Wheelersburg, I cried outright.
I'll never be the same again.
Since that enlightened day."
The sudden ringing of the bell
Did wake me and my dream dispel.
I'd like to hear, some other time
Just what the others had to say.

TIME FOR ENGLISH



These are our classes—in this section of our annual we have tried to give a brief review of Wheelersburg at school. We do study—you know! We write complete sentences, solve problems of a difficult nature, we know our Constitution of the U. S.—partly, we set up experiments, we sing, we play, we work. Here is W.H.S. at school.

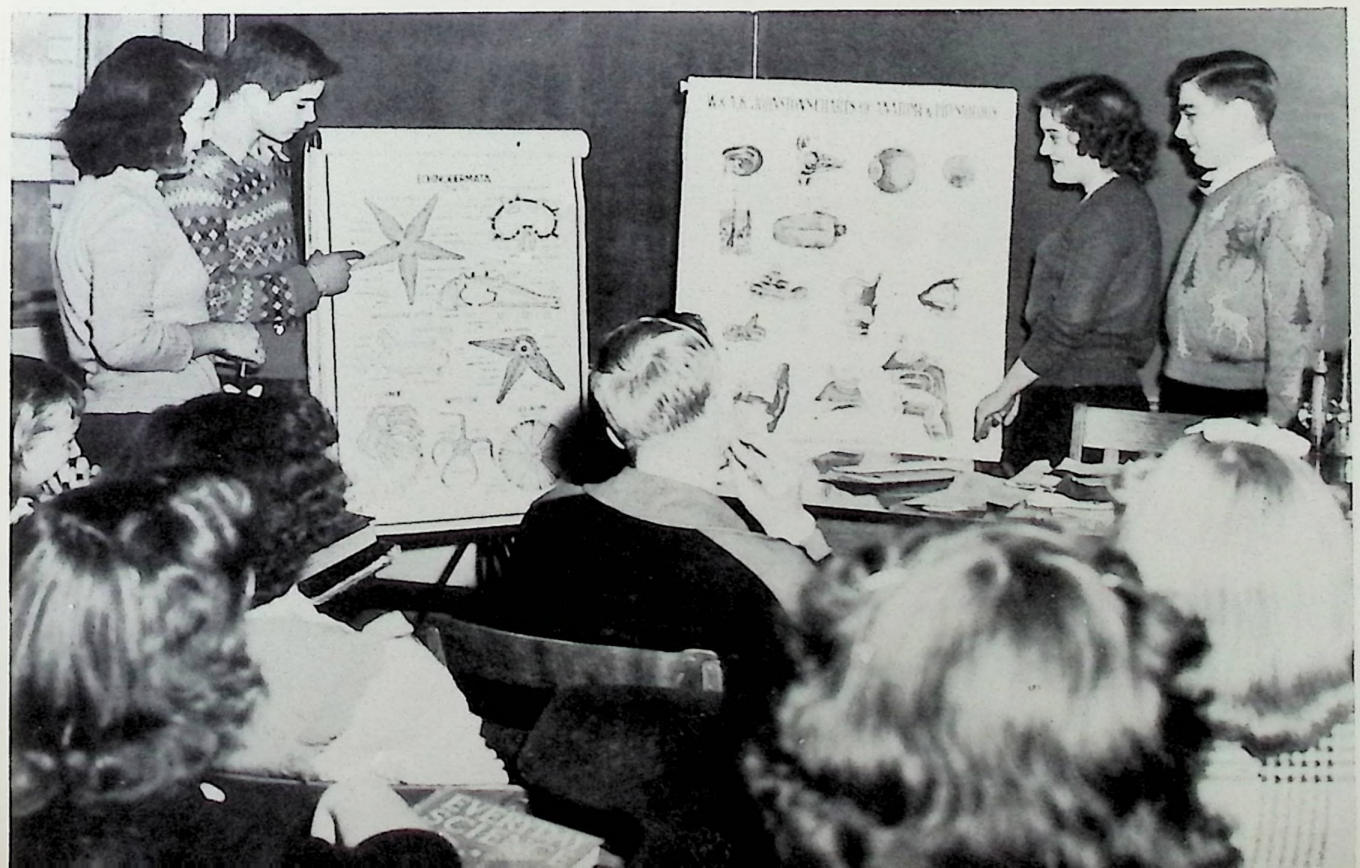


A GLANCE AT THE MATH DEPARTMENT





MODERN PROGRESS AND SCIENCE





WORLD PEACE, THE FUTURE—SOCIAL SCIENCE



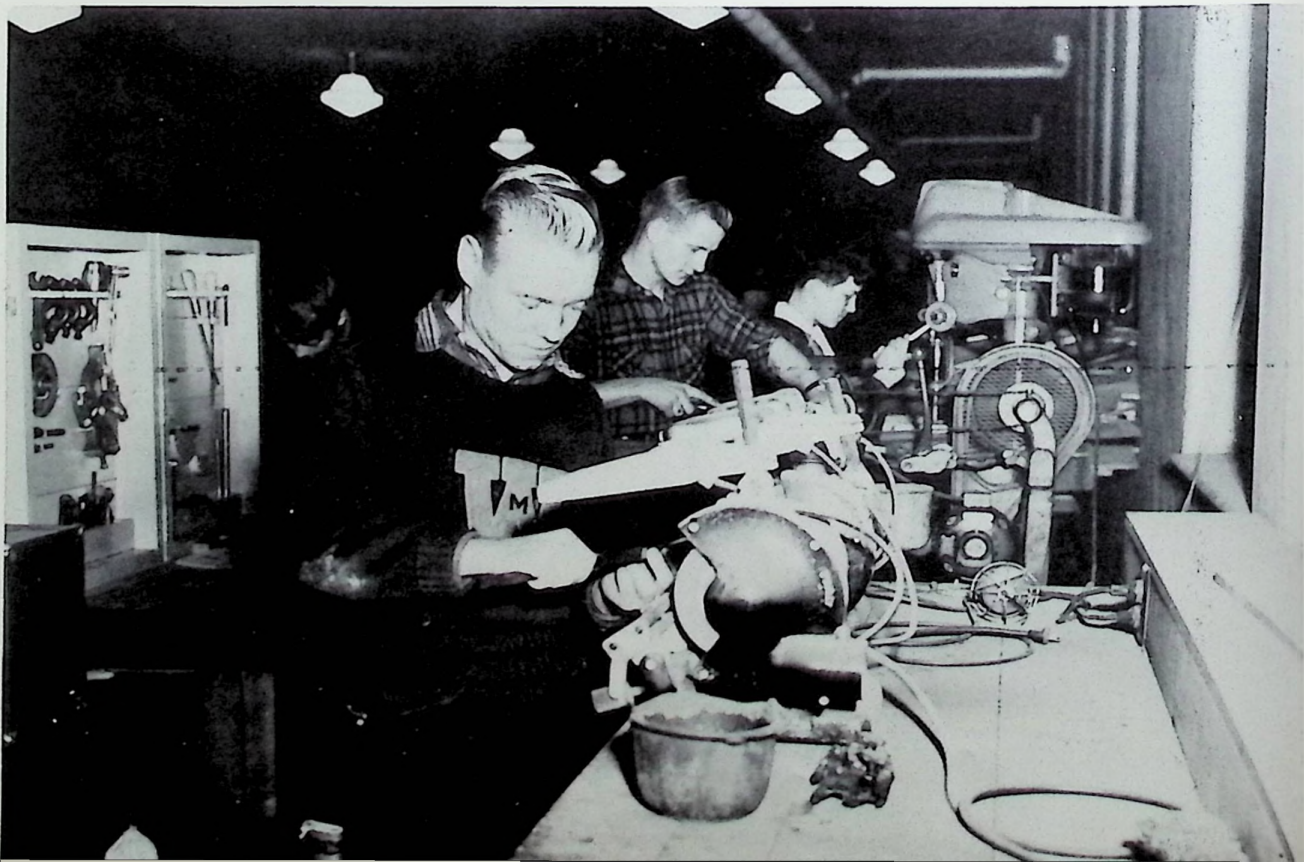


MAKING OUR ENVIRONMENT PLEASANT
—HOME ECONOMICS





CONSTRUCTION AND ENGINEERING
—INDUSTRIAL ARTS





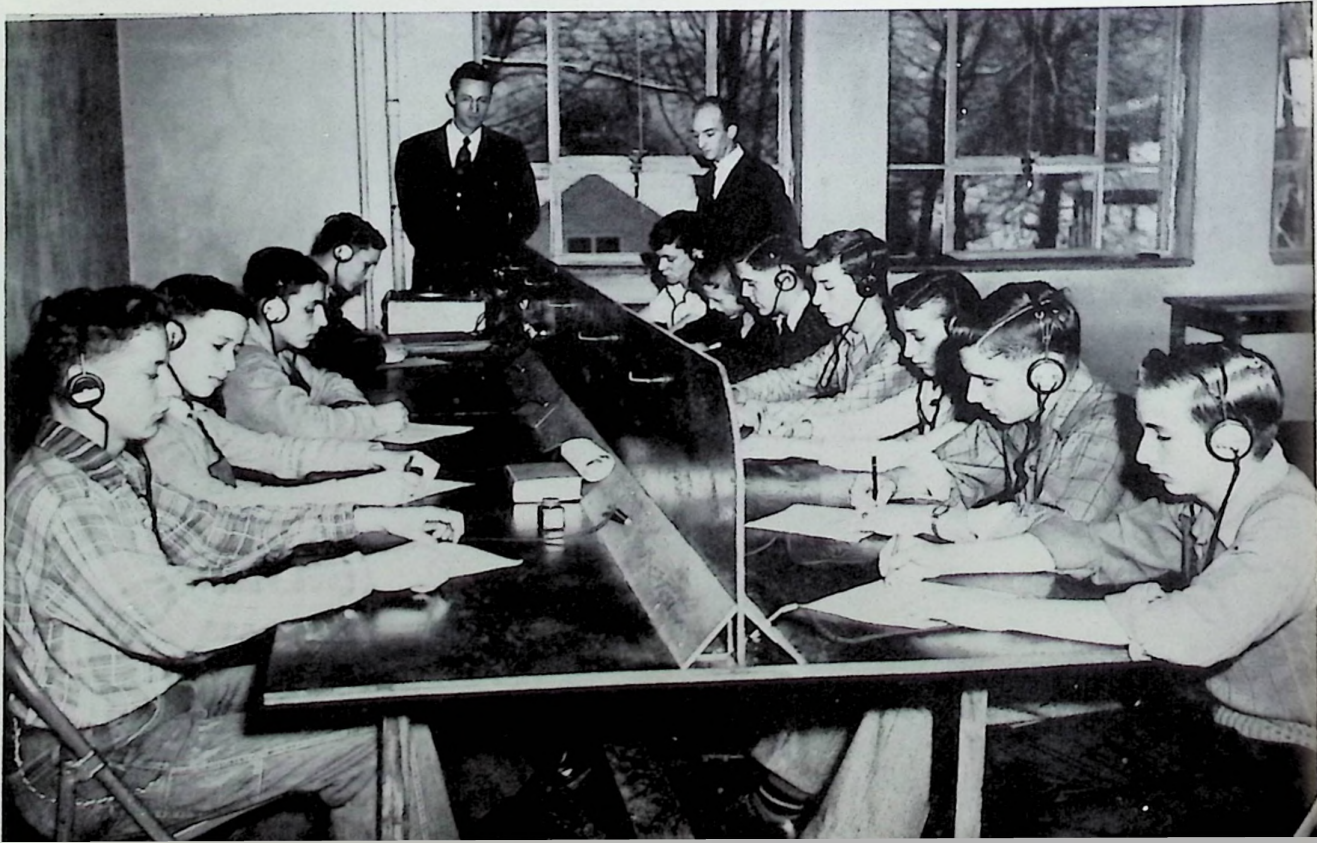
BIG BUSINESS—COMMERCIAL DEPARTMENT





Ego te Amo—LATIN

Station W H S—RADIO





THERE'S MUSIC IN THE AIR—MUSIC





HEALTH AND PHYSICAL EDUCATION



RESEARCH AND STUDY

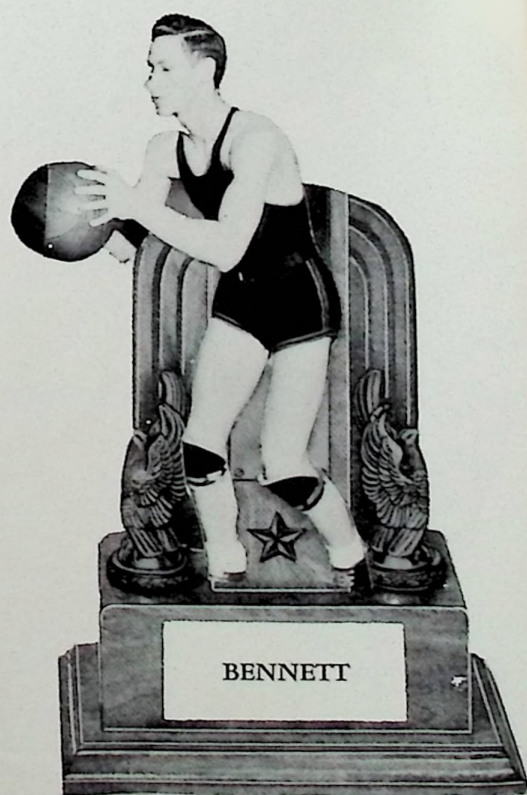
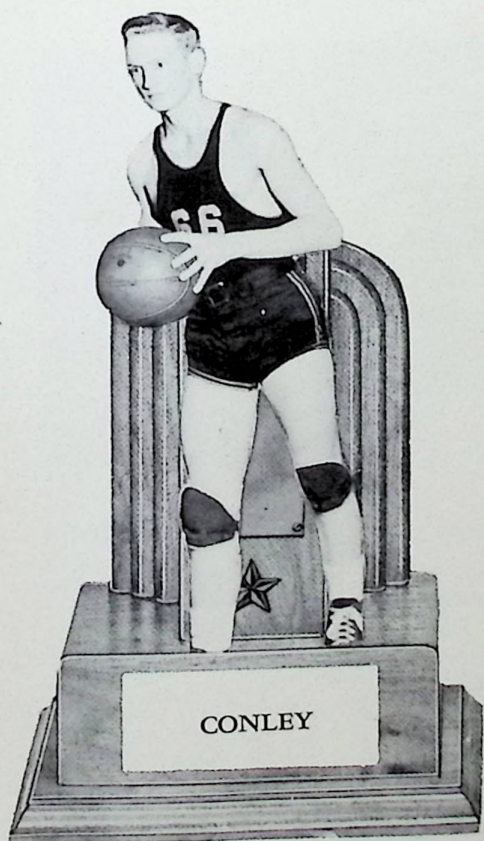
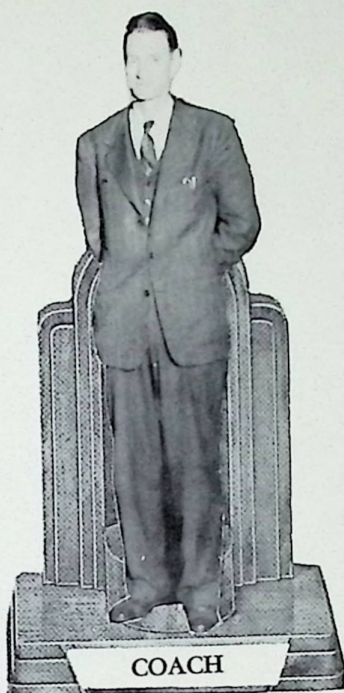
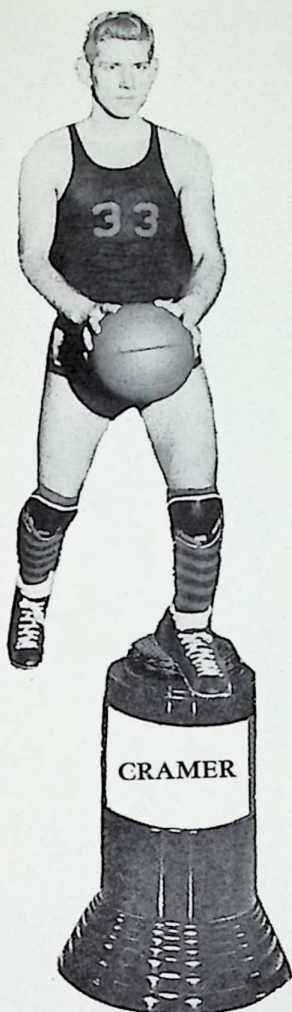


So you have seen W.H.S. at school. We've proud of our school, of our classes and of our community. We are working now for scholarship tests, for final exams, class plays and then the end—graduation. We'll always look back to the good old high school days and W.H.S.



To those senior varsity players, Gene Bennett, Leslie Cramer, Ray Conley, Wilbur Mauk, Lowell Staker, and David Craycraft, we express sincere congratulations on your many brilliant victories. May your life be as full of successes and victories as your career as a W.H.S. varsity basketball player has been. We'll really miss you!







Center Front: Bobby Smith.

Front Row: Wilbur Mauk, Lowell Staker, Less Cramer, Ray Conley, Gene Bennett.

Back Row: David McCarty, Stanley Meyers, Dave Craycraft, Harold Lawson, Russell Colegrove, Donald Billups, George Smith, Mr. Preston.

(Scores for Varsity and Reserves)

| | | <i>Varsity</i> | | <i>Reserves</i> | |
|---------|---------------------|----------------|------|-----------------|------|
| | | We | They | We | They |
| Oct. 19 | McDermott | 43 | 31 | 23 | 15 |
| Oct. 24 | Minford | 48 | 10 | 20 | 13 |
| Nov. 2 | Washington | 36 | 21 | 23 | 27 |
| Nov. 9 | Clay | 39 | 18 | 20 | 13 |
| Nov. 13 | Beaver | 57 | 43 | 31 | 26 |
| Nov. 16 | Rarden | 68 | 26 | No game | |
| Nov. 21 | Green | 38 | 28 | 20 | 23 |
| Nov. 30 | Lucasville | 65 | 35 | 21 | 33 |
| Nov. 5 | Otway | 55 | 36 | 33 | 6 |
| Nov. 7 | Ironton | 42 | 20 | 39 | 5 |
| Dec. 14 | South Webster | 50 | 47 | 23 | 27 |
| Dec. 18 | Waverly | 43 | 40 | 28 | 11 |
| Dec. 28 | Columbus | 41 | 24 | No game | |
| Jan. 2 | Minford | 46 | 30 | 29 | 18 |
| Jan. 4 | Portsmouth | 26 | 27 | 19 | 18 |

COUNTY TOURNAMENT — *Reserves*

| | | | |
|---------|---------------------|----|----|
| Feb. 4 | Minford | 11 | 21 |
| Feb. 12 | South Webster | 19 | 18 |

RESERVES

| | | | <i>Varsity</i> | | <i>Reserves</i> | |
|---------|---------------------|----|----------------|-------------|-----------------|-------------|
| | | | <i>We</i> | <i>They</i> | <i>We</i> | <i>They</i> |
| Jan. 8 | Beaver | 46 | 31 | 27 | 13 | |
| Jan. 11 | Washington | 44 | 27 | 29 | 22 | |
| Jan. 17 | New Boston | 35 | 38 | 19 | 11 | |
| Jan. 25 | Rarden | 58 | 27 | No game | | |
| Jan. 18 | Clay | 55 | 32 | 25 | 7 | |
| Jan. 30 | Green | 58 | 37 | 37 | 26 | |
| Feb. 2 | New Boston | 42 | 23 | 25 | 16 | |
| Feb. 5 | McDermott | 65 | 35 | 23 | 6 | |
| Feb. 8 | Lucasville | 45 | 26 | 21 | 22 | |
| Feb. 12 | South Webster | 53 | 29 | 23 | 7 | |
| Feb. 14 | Otway | 55 | 28 | 40 | 12 | |

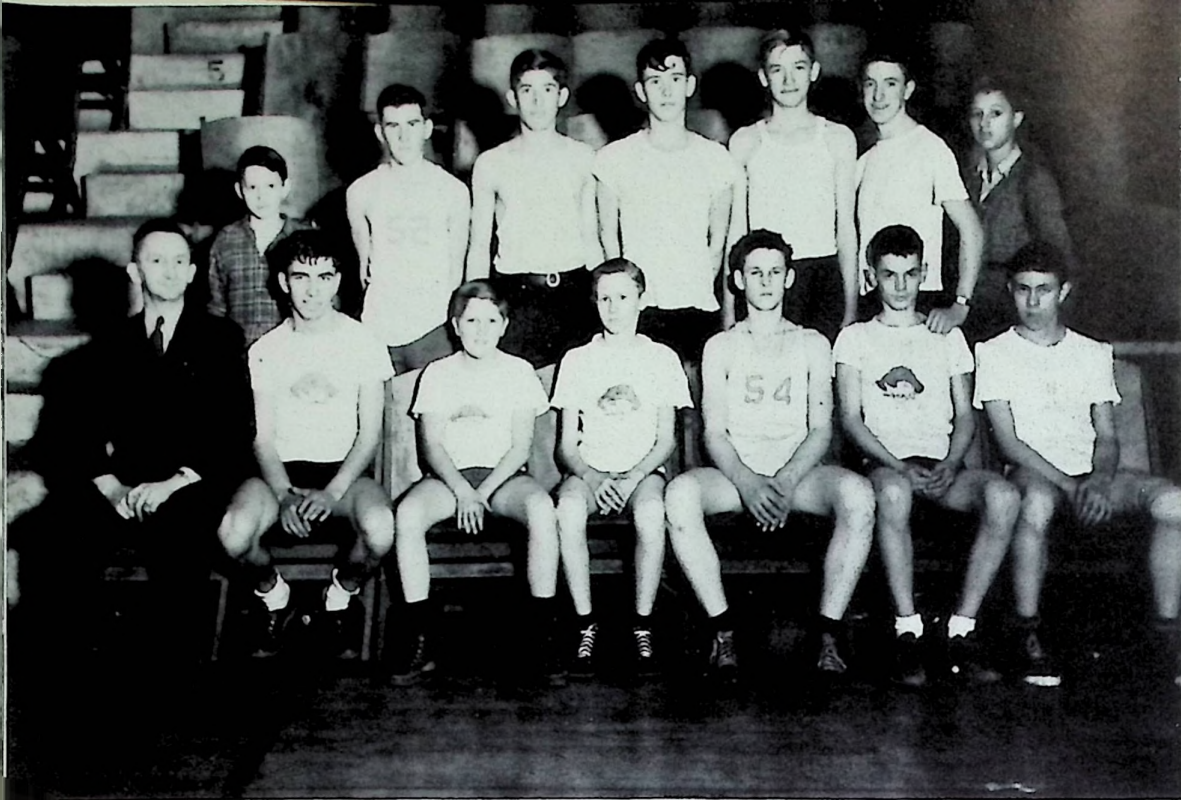
| COUNTY TOURNAMENT — <i>Varsity</i> | | | |
|------------------------------------|----------------------|----|----|
| Feb. 18 | South Webster | 41 | 24 |
| Feb. 21 | Lucasville | 44 | 19 |
| Feb. 23 | Green | 45 | 43 |
| Feb. 25 | Green (Finals) | 55 | 23 |

| DISTRICT TOURNAMENT | | | |
|---------------------|------------------|----|----|
| March 2 | Oak Hill | 78 | 34 |
| March 7 | Beaver | 57 | 44 |
| March 8 | Green | 42 | 36 |
| March 9 | New Boston | 36 | 27 |

Front row: Lloyd Caudill, Forrest Turner, Ralph Frazie, Junior Knapp, Don Miller, Ed. Skiver.

Back row: Mr. Preston, Sidney Smith, Russell Colegrove, Earl Downs, James Glascock, Richard Harner, Don Williams, Mr. See.





First Row: Mr. Russell, Gene Welsh, Jesse Ramey, Bill Hall, Raymond Conley, Tom Bowen, Maurice Cremeans, Sonny McFerren, Jack LeMaster, Wade Wright, Don Smith, Bob Delebar, Glenn Williams, Ernest Williams.

FRESHMAN BASKETBALL

The Freshmen basketball team certainly entertained the fans in several hotly contested preliminary games this year. Of course, they lived up to true Wheelersburg tradition and brought home most of the victories. They certainly didn't let down—not on your life! We're counting on them too. Three years from now we'll be seeing them play varsity ball and, of course, they'll probably be living up to all the mighty pirates of their ancestry, and they'll still be the victorious Pirates. Freshmen on to victory!



Betty Lou Booth, Helen LeMaster, Irene Blair, Barbara Reidenbach, Loretta Armes.

CHEERLEADERS

Betty Lou Booth, Helen LeMaster, Mary Van Horn, Joanne Purtee, Loretta Armes.





Back Row: Mr. Preston, Howard Campbell, Dave Thornton, Leslie Cramer, Sidney Smith, Don Williams, Nick Felty, Bob Klingman.

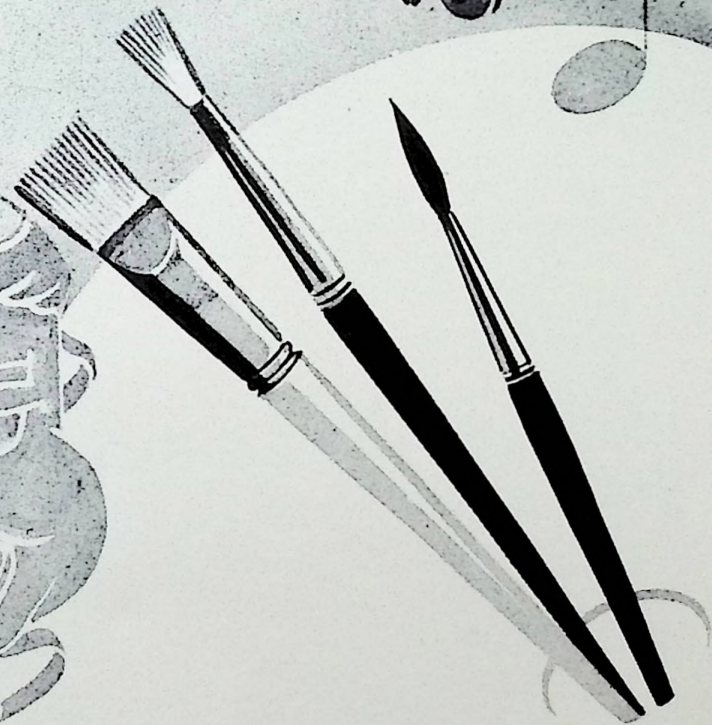
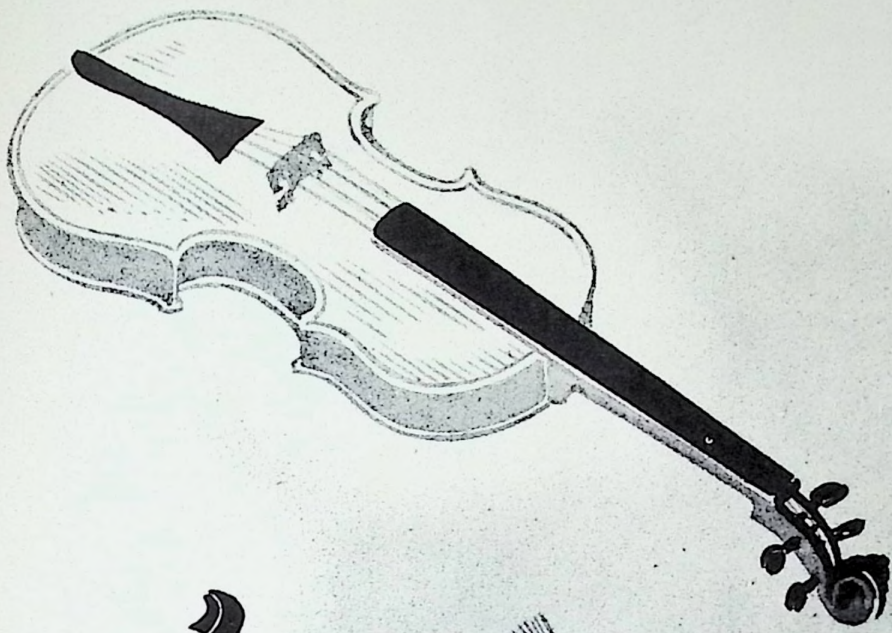
Front Row: Lowell Staker, Otis Christian, David Craycraft, Gene Bennett, Ralph Frazie, Wilbur Mauk.

BASEBALL

Spring is here—basketball season is over. Get out the bats, get out the gloves, and come along with us. We'll take you out to the ball game—buy you some peanuts and cracker jacks and show you a real game of ball. Now watch—see that Bennett wind up! What a pitcher! The game is on.

Although we were a little late in getting started on our baseball career this year, we at Wheelersburg have thoroughly enjoyed baseball. The Pirates fought hard, showing the same spirit that has made them famous.

To the ball team we offer our congratulations. Defeat or victory, you were in there for the love of the game. You were great sports.



Activities



Standing: Miss Shepherd, Dave Thornton, Jack Sommer.
Seated: Mr. Russell, Velma Gleim, Joyce Johnson, Miss Richards, Mary Van Horn, Betty Pollock, Lois Thompson, Ginny Watts, Mr. McCowen.

ANNUAL STAFF

Editorial Staff

| | |
|-------------------------|------------------|
| Virginia Watts | Editor-in-Chief |
| Forrest Colegrove | Associate Editor |
| Lois Thompson | Feature Editor |
| Velma Gleim | Feature Editor |
| Joyce Johnson | Sports Editor |
| John Sherman | Art Editor |

Business Staff

| | |
|---------------------|------------------|
| Betty Pollock | Business Manager |
| Mary Van Horn | Business Manager |
| Dave Thornton | Business Manager |
| Jack Sommer | Business Manager |

Faculty Advisers

Miss Willa Sue Richards
 Mr. Donald McCowen

Miss Lyda Belle Shepherd
 Mr. Donald Russell

STUDENT COUNCIL

I am an American! I live in southern Ohio. I attend Wheelersburg High School. Oh, yes, I know I'm just an average high school boy. There are thousands of them all over the United States. My name is John Sommer—not an unheard name, just American—that's all. By the way there are probably thousands of Johns also, but I bet there's not a one who goes to as "swell" a high school and knows as nice a "gang" as I do. This year I was elected president of the student council. Golly, I was happy that day. I don't know if I could tell you the way I felt or not. There is just something in knowing that the old class is for you, that you can get just as far in America as you really want to, and there's one thing now—I do want to get to the top. But anyway, that election day was a great day and to all of you, my fellow classmates, who helped in electing me, I thank you. When all the election returns were in I found that I had one grand group with which to work. They were an ambitious, eager, fun loving group with plenty of school spirit and an obsession for good government. I guess I'll always remember this year, I certainly couldn't forget, not with the experiences I've had with public opinion, business and administrative problems, trying to get laws passed for the good of all. No, I'll not forget—and when I get to the White House I'll be thanking and blessing you all for giving me the experiences that shall make me the success I shall be.

| | |
|-------------------------|---------------------|
| Jack Sommer | President |
| Forrest Colegrove | Vice-President |
| Judy Carter | Secretary-Treasurer |

Standing: John Sherman, Mr. Smith, Mr. McCowen.

Seated: Jesse Ramey, Phyllis Bowen, J. T. Mauk, Forrest Colegrove, Gene Bennett, Ted Reese, Jack Sommer, Velma Gleim, Willa Staggs, Patty Smith, Juanita Weidner, Helen Miller, Helen Montavon.





Seated: Norma Maple, Kathaleen Gleim, Jean Bailey, Joleane Mauck, Karen Werner, Velma Gleim, Mary Thieken, Roberta Blair, Mary Lou York, Imojean Salley, Ruby Stamper, Ruth Stamper.

Standing: Betty Pollock, Lois Thompson, Miss Shepherd, Ginny Watts, Faye Fraley, Mary Van Horn, Betty Skaggs, Jean Bradley, Anna Pearl Burgess.

SIGMA TAU PI

The Sigma Tau Pi is an exclusive organization for senior girls who are enrolled in at least one commercial subject. The purpose of this club is to promote scholastic and social activities among the girls. An athletic banquet has been planned and other social functions are scheduled for the future.

Miss Shepherd, who organized this club two years ago, is the present sponsor. She has been a very capable leader and has advised the girls concerning the publication of their newspaper, their carnival booth, their Christmas party and in their many other activities.

| | |
|-----------------------|-----------|
| Virginia Watts | President |
| Lois Thompson | Secretary |
| Kathaleen Gleim | Treasurer |

NEWSPAPER STAFF

Extra, extra, read all about it—Wheelersburg High School issues "Kampus Kapers." If it's the latest in school news, the up to the minute in interesting facts about the old classmates, why then it's "Kampus Kapers" again off the press—or should I say mimeograph?

The issues of the paper this year have really been good. They have been highlighted by excellent editorials which have really been inspiring. The W. H. S. news has been written up into most interesting columns. The interest among all students in all grades was very great. Whenever an issue went on sale we found just as many under classmen reading the news as there were seniors.

So remember if you're strictly up on current events, you'll be a regular subscriber to "Kampus Kapers."

| | |
|---------------------|------------------|
| Betty Pollock | Editor-in-Chief |
| Jean Bailey | Associate Editor |
| Velma Gleim | Business Manager |
| Mary Van Horn | Sports Editor |
| Dick Mullins | Art Editor |
| Joleane Mauck | Society Editor |
| Norma Maple | Poet |
| Betty Skaggs | Grade Reporter |
| Ruth Stamper | Grade Reporter |

Left to right: Mary Van Horn, Betty Skaggs, Joleane Mauck, Betty Pollock, Norma Maple, Velma Gleim, Ruth Stamper, Jean Bailey.





First Row: Charles Mauk, Bob Flanagan, Raymond Conley, Bobby Phipps, Bill Simon, Bernard Evans, Ernest Williams, Jim Keeney.

Second Row: Roy Ellis, Karl Kinker, Paul Riggs, Ralph Green, Jim Lambert, Jack Sommer.

Third Row: Stanley Myers, Don Billups.

SAFETY PATROL

The Safety Patrol was formed at the beginning of the year at the request of Mr. Smith. This club has been active for several years, and it has a fine record for the prevention of accidents to any of the students. The boys in the Safety Patrol have been working regularly at noon and after school, in all kinds of weather, to protect the smaller children at the crossing of the highway in front of the school. These boys work in pairs, and change shifts every two weeks. During the basketball season the members of this Patrol guarded the exits of the gymnasium. At other school affairs they have served capably in the roles of patrolmen and announcers. The captain selected this year was the capable and talented Karl Kinker. He is an inspiration to the other boys through the energetic example he sets for them.



Standing: Norma Johnson, Sarah Johnson, Joan Gilpin, Janet Turner, Juanita Weidner, John Miller.

Sitting: Karl Kinker, Oral Maggard, Jim Lambert, Naomi Baisden, Dave Thornton.

LIBRARY STAFF

Seated: Jean Hacker, Phyllis Drake, Delores Storey, Lucy Skaggs.

Standing: Betty Lou Williams, Betty Moore, Juanita Weidner, Thelma Rockwell, Patty Smith, Charles Mauk.





Left to Right: Roberta Blair, Betty Pollock, Mr. Smith, Virginia Watts, Pauline Pace, Dave Thornton, John Sommer, John Miller, Lois Thompson, Norma Montavon, Helen LeMaster, Otis Christian.

OFFICE STAFF

Left to Right: Doris Jean McFerren, Joan Lallow, Lucille, Townsend, Mr. Smith, Jeanne Purtee, Patty Smith, Juanita Weidner, Barbara Reidenbach, Dolores Thompson.



G. A. A.

The title "Girls' Athletic Association" seems to be a very stiff and sophisticated name for the friendly group of girls who often meet in the school gym for sports and games of friendly competition.

Meetings have been planned at different times and activities, both athletic and social, have been enjoyed. Basketball has been the most popular sport with the girls this year and they have been improving their skill at shooting baskets by practicing after school. Teams were chosen and there have been several games that would have caused anyone to perch on the edge of his chair in excitement.

One of the annual events of the G. A. A. is a Senior Tea designed to give the other members an opportunity to show their appreciation to the girls who will leave the club at the end of the year.

Miss Distel has been a very attentive sponsor of this club and has endeavored to instruct the girls not only in athletics but in the art of getting along with other girls regardless of age or creed.

All in all, the Girls' Athletic Association has done much this year to promote sportsmanship and to bring the "good neighbor" policy closer to W. H. S.

| | |
|-----------------------|---------------------|
| Velma Gleim | President |
| Jane Lyon | Vice-President |
| Kathaleen Gleim | Secretary-Treasurer |

First Row: Janet Turner, Eula McCleese, Patty Smith, Barb Reidenbach, Judy Carter, Miss Distel, Lorena Stone, Norma Yeley, Janet Molen, Velma Gleim, Norma Johnson, Phyllis Gose.
Second Row: Georgia Salley, Mary Jane Bowen, Juanita Wright, Frances Lewis, Juanita Monroe, Mary Ann Smith, Patty Fairchild, Lucy Skaggs, Maxine Staggs, Jean Bradley, Lou York, Rosemary Collingsworth, Delores Storey, Betty Hensley, Geneva Keeton, Joan Wright.
Third Row: Juanita Weidner, Thelma Rockwell, Jerry Bailey, Maurita Gleim, Ruby Stamper, Joanne Purtee, Lillian Sagraves, Juanita Staggs, Norma Maple, Betty Skaggs, Phyllis Bowen, Irene Blair, Joyce Johnson, Juanita Fraley, Jane Lyon, Imogene Taylor, Frances Martin.
Fourth Row: Teresa Burgess, Jean Bailey, Mary Van Horn, Betty Pollock, Kathaleen Gleim, Pauline Pace, Ruth Stamper, Faye Fraley, Pearl Burgess, Della Lewis, Charlotte Green, Naomi Baisden, Norma Montavon, Mary Ann Ketter, Alma Harper, Julia Fout, Kathryn Hammond, Betty Fisher.





First Row: Janet Turner, Juanita Wright, Sonny McFerren, James Evans, Bill Hall, Bob Mauk, Gerald Hall, Paul Setters, Jesse Ramey, Don Williams.
Second Row: Ernest Williams, Barbara Thompson, Juanita Monroe, Loretta Armes, Betty Lou Booth, Patty Fairchild, Joe Turner, Jack LeMaster, Maurice Cremeans, Raymond Conley, Joe Delebar, Joe Merrill, Don Smith, Mr. McCowen.
Third Row: Adrian Slone, Patty Smith, Jerry Bailey, Agnes Blanton, Juanita Staggs, Anna Thieken, Ruth Bailey, Imojean Taylor, Marcelline Hall, Tom Bowen, Royal Fritz, Sidney Smith, Raymond Woodrum, Ralph Frazie.

SCIENCE CLUB

Mr. McCowen formed the Science Club this year. The hearty response with which the students have accepted the call for membership shows that they welcome an opportunity to increase their knowledge of all the sciences. Beginning with an enrollment of 24 students, the club has almost tripled in the short time it has been in operation. The group is composed of all students of freshmen science who are interested in performing interesting educational experiments. Each member must promise to perform and explain at least one experiment for the benefit of the class. A large project file has been gradually built up until they have five hundred problems covering the fields of physics, chemistry, electricity, and radio. This project file is a great help to both the students and teacher in finding a variety of interesting ways to present and explain their experiments. Mr. McCowen acts only as the supervisor at the club meetings, and the students do their own thinking and working. It is to be hoped that this club will increase in size in the next few years, and thus personalize and revitalize science.

| | |
|----------------------|--------------|
| President | Royal Fritz |
| Vice-President | Janet Turner |
| Secretary | Anna Thieken |

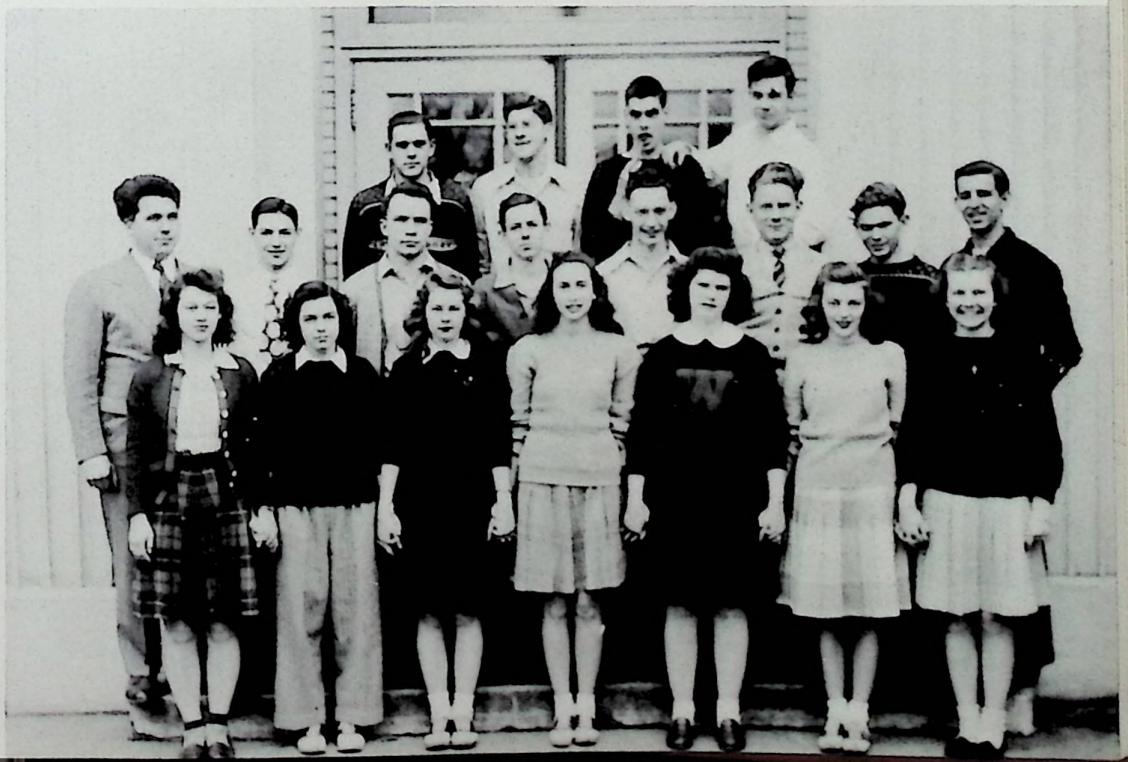
MATH CLUB

Do you remember Archimedes? And certainly you couldn't forget Pythagoras and his Pythagorean Theorem—you know, the square on the hypotenuse. Or maybe it's Lise Meitner and atomic power. But thinking again—maybe you could forget them with certain geni of great mathematical ability around Wheelersburg. Who could remember Einstein when we have our own capable John Sherman and Richard Harner? There is Forrest Colegrove who will probably carry on the work of Thomas Edison. I wonder too, if Norman Reiter and Harold Lawson will not be the foremost names in the practical use of atomic power. Jim Lambert and Karl Kinker—maybe I shouldn't tell—they're collaborating on a new solid geometry textbook, setting up proofs after the heart of a high school student. We also hear that Mr. See, John Miller, and Dave Thornton have been asked to continue their research at the institute of higher learning at Wheelersburg. So you see whenever you think of great minds in this mathematical atomic age, think of our W. H. S. Math Club—then think again!

First Row: Velma Gleim, Vera Downs, Mary Ann Ketter, Pauline Pace, Kathaleen Gleim, Betty Pollock, Mary Van Horn.

Second Row: Mr. See, Jim Lambert, John Miller, Dave Thornton, Forrest Colgrove, Norman Reiter, Lloyd Caudill, Lowell Staker.

Third Row: Richard Harner, John Sherman, Harold Lawson, Karl Kinker.





First Row: John Sommer, Otis Christian, Jim Lambert, Don Wilson, Karl Kinker, Herb Carver, Ralph Roberts, Norman Reiter, Vern Young, Jim Turner.
Second Row: Betty Skaggs, Marcus McFerren, Jesse Ramey, Patty Smith, Mary Lou York, Barbara Reidenbach, Ena Wagner, Judy Carter, Lucille Townsend, Mary Bower, Patty Fairchild, Lucy Skaggs, Dave Thornton.
Third Row: Miss Shepherd, Karen, Werner, Jeanne Purtee, Janet Molen, Dolores Thompson, Betty Price, Wilma Lou Johnson, Wilma Jean Johnson, Norma Lykins, Rosemary Cleary, Dore Jean McFerren, Juanita Weidner, Thelma Rockwell, Adah Harper, Betty Fraley, Bob Flannigan, John Miller.
Fourth Row: Helen LeMaster, Imogene Hull, Jane McLeod, Mary Ann Moore, Phyllis Lang, Patty Dold, Joleane Mauck, Della Lewis, Jeraldine Jarvis, Delores Cramer, Maxine Bailey, Lillian Sagraves, Vera Downs, Juanita Fraley, Jane Lyon, Mary Ann Ketter, Norma Montavon, Donna Burke, Bob Reese.
Fifth Row: Alma Harper, Julia Fout, Opal Courtright, Geneva Keeton, Teresa Burgess, Phyllis Bowen, Irene Blair, Norma Maple, Jean Bailey, Betty Pollock, Mary Van Horn, Kathalene Gleim, Pauline Pace, Joyce Johnson, Joanne Lallow, Jean Bihl, Joe Turner, Ralph Green, Howard Campbell.

BOOSTER CLUB

Go ye Pirates, go ye Pirates, go—go—go. Win ye Pirates, win ye Pirates, win—win—win. If school spirit and enthusiasm means anything at all in the winning of basketball games, then this group of basketball boosters really deserve commendation and praise. The splendid way in which they have backed the team this year has certainly been an incentive sending our boys on to victory. The club was organized under the direction of Miss Shepherd who has capably and efficiently directed their activities through the year. Booster buses have gone to almost all the away from home games. W. H. S. is back of their team!

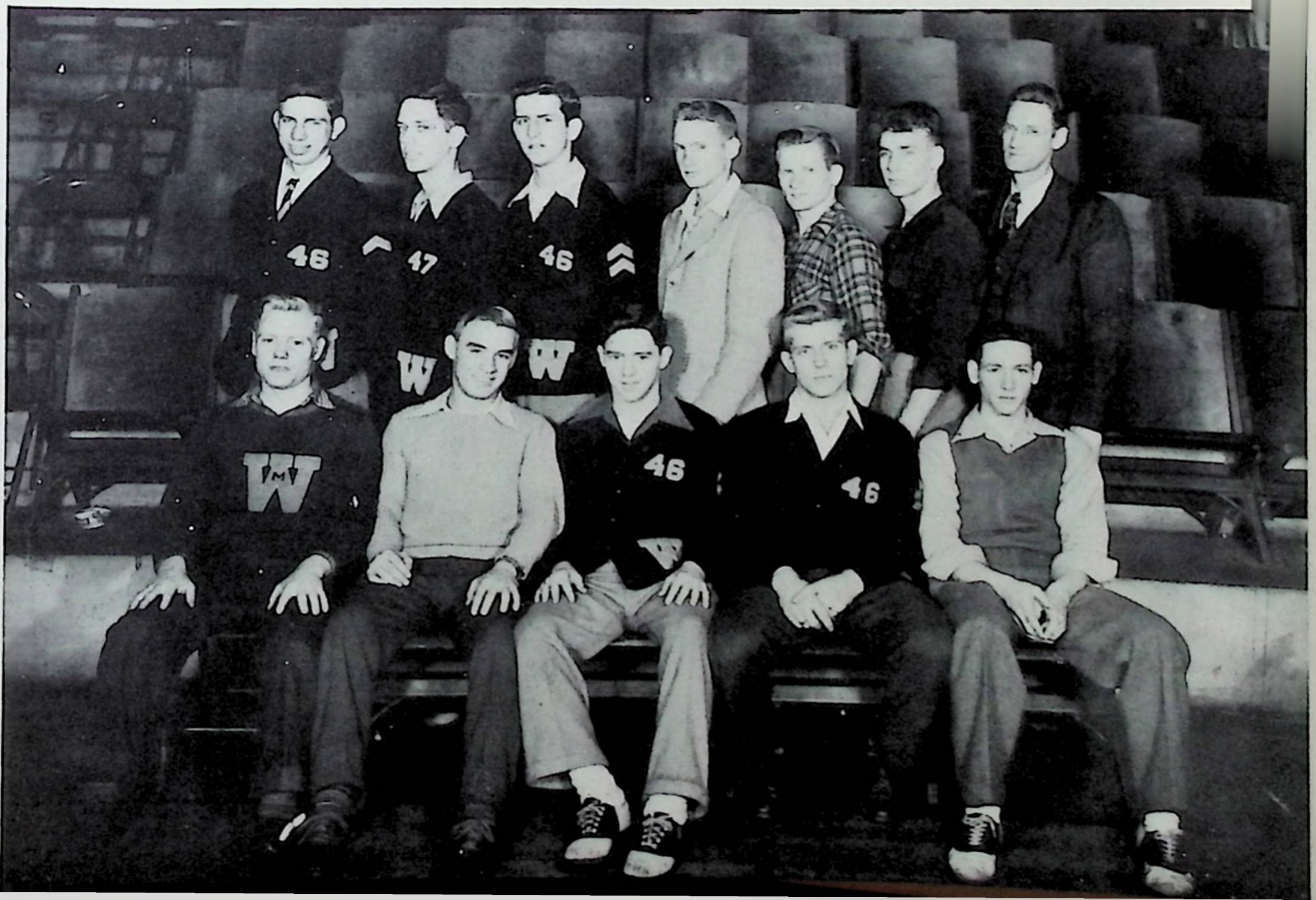
The good sportsmanship taught in this club was impressed on all the community at our tournament games. And it isn't just kidding when we say for first-class basketball and high-ranking sportsmanship stop in at Wheelersburg High School!

VARSITY W CLUB

The Varsity W Club was begun five years ago, and has been active ever since. This year it was formed under the faculty supervision of Mr. Preston and Mr. See. The main purpose of this club is to give more recognition to the varsity members of our basketball team, and to form the basic instrument for a better and more complete understanding among the players themselves. There are two qualifications for membership in this group. Each boy must have had a year of varsity experience, and be active in sports during the season which he is a member. Basketball managers and scorekeepers are also eligible.

| | |
|--------------------|---------------------|
| Less Cramer | President |
| Louie Staker | Vice-President |
| Gene Bennett | Secretary-Treasurer |

Sitting: George Smith, Stanley Myers, Dave Craycraft, Less Cramer, Gene Bennett.
Standing: Wilbur Mauk, Don Billups, Lowell Staker, Ray Conley, Bob Morgan, Ted Reese, Mr. Preston.





Major and Majorettes: Ray Conley, Jean Chandler, Faye Fraley, Ruby Stamper.

First Row: James Evans, Doris Ross, Juanita Fraley, Gwendolyn Hansgen, Harold Billups, Dolores Thompson, Ed Shelton, Charles Thompson, Jim Glascock, Bob Klingman.

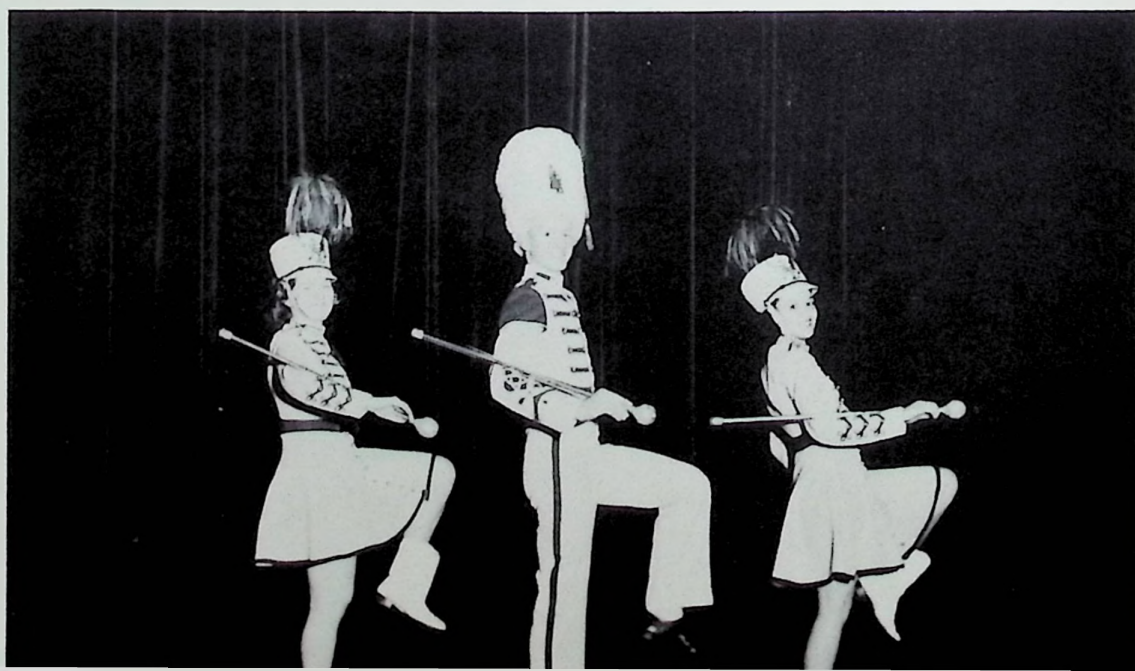
Second Row: David McCarty, Jeon Bihl, Lillian Sagraves, Jewel Jarvis, Norma Lykins, Adrian Slone, Tom Bowen, Karl Kinker, Joe Merrill, Royal Fritz, Norma Montavon, Jane Lyon, Miss Potts, Kathryn Hinds.

Third Row: Agnes Blanton, Nick Felty, Karl Willard, Bob Reese, James Lawson, Bobby Joe Scherer, Maxine Bailey, Emil McHenry, Joanne Lallow, Mary Ann Ketter, Betty Pollock, Mary Van Horn, Wilbur Mauk.

BAND

OFFICERS

| | |
|----------------------|----------------|
| Wilbur Mauk | President |
| Betty Pollock | Vice-President |
| Jane Lyon | Secretary |
| Norma Montavon | Treasurer |





First Row: Roberta Blair, Jean Bailey, Norma Maple, Betty Skaggs, Janet Molen, Ginny Watts, Lois Thompson, Pauline Pace.
Second Row: Wilbur Mauk, Herb Carver, Don Wilson, Faye Fraley, Betty Pollock, Mary Lou York, Velma Gleim, Joleane Mauck, Mary Van Horn, Mrs. McGowan.
Third Row: Ray Conley, Dave Craycraft, Dave Thornton, John Miller, Ted Reese, Gene Bennett, Less Cramer, Otis Christian, Lowell Staker, Don Thicken.

MUSIC

First Row: Lorretta Armes, Gracie Crabtree, James Evans, Bill Hall, Gerald Hall, Ray Conley, Juanita Wright, Barbara Thompson, Janet Turner.
Second Row: Betty Lou Boothe, Billie Lois Conley, Geneva Webb, Lucy Skaggs, Patty Smith, Jesse Ramey, Jack Le-Master, Martin McFerren, Donald Williams, Agnes Blanton, Joan Gilpin, Delores Storey, Patty Dold.
Third Row: Beulah Blevins, Anna Baisden, Jerry Bailey, Hazel Craft, Maurita Gleim, Joe Turner, Maurice Cremeans, Don Ellis, Paul Ishmael, Charlotte Green, Naomi Baisden, Thelma Barber, Lillian Sagraves.
Fourth Row: Phyllis Gose, Joan Wright, Frances Martin, Don Smith, Bob Delebar, Sidney Smith, Glen Williams, Tom Bowen, Don Williams, Anna Thicken, Juanita Staggs, Betty Fisher, Katherine Hammond.





First Row: Joleane Mauck, Phyllis Bowen, Teresa Burgess, Geneva Keeton, Wilma Jean Johnson, Wilma Lou Johnson, Norma Montavon, Juanita Fraley, Joanne Lallow, Betty Lou Williams.
Second Row: Barbara Reidenbach, Janet Molen, Roberta Blair, Dave Craycraft, John Miller, Ted Reese, Otis Christian Less Cramer, Gene Bennett, Pauline Pace, Velma Gleim, Ada Barber.
Third Row: Gwendolyn Hansgen, Judy Carter, Ginny Watts, Mary Van Horn, Betty Skaggs, Norma Maple, Dave Thornton, Herb Carver, Don Thieken, Bob Reese, Charles Thompson, James Lawson, Bobby Joe Scherer, Bob Klingman, Patty Smith, Betty Pollock, Mary Lou York, Karen Werner, Jeanne Purtee.
Fourth Row: Lucille Townsend, Thelma Rockwell, Wilma Jean Chandler, Faye Fraley, Jean Bailey, Karl Klinker, Forest Turner, Lowell Staker, Ray Conley, Ralph Roberts, Lawrence Thieken, Jim Lambert, Wilbur Mauk, Lois Thompson, Eula McCleese, Jewel Plummer, Mary Jane Bowen, Dolores Thompson, Mrs. McGowan.
Fifth Row: Delores Cramer, Donna Burke, Maxine Bailey, Imogene Hull, Doris Jean McFerren, Kathryn Hinds, Jane McLeod, Helen LeMaster, Mary Ann Moore, Phyllis Lang, Jean Bihl, Ruth Mucha, Willa Staggs, Adah Harper, Betty Fraley, Vera Downs, Jane Lyon, Mary Ann Ketter.

MIXED CHORUS

This year Wheelersburg High School has really had a variety of music classes. The Mixed Chorus, the Senior Chorus and the Freshmen Chorus have greatly added to the music appreciation of the entire student body.

Under the direction of Mrs. McGowan, the Mixed Chorus was organized this year with about eighty students enrolled. A Christmas program was planned but because of inclement weather it was canceled. This chorus is divided into several different quartets and ensembles which sing at various clubs in the community. Librarians for the Mixed Chorus are Jane Lyon and Wilbur Mauk.

The Senior Chorus was organized for the benefit of the seniors who wished to enroll in a vocal music class. The regular Mixed Chorus interfered with several senior classes and made it impossible for many to attend. Music of the greater composers has been the theme for most of the activities of the Chorus.

The Freshmen Chorus is the ninth grade version of the Mixed Chorus. It also is under the direction of Mr. McGowan who is doing a fine job of preparing the members for their entrance into the regular Glee Club.









Ignorance is bliss



Let's sit this one out



Higher and higher
and higher



Check that!



Who cut down the old pine tree?



After school



?



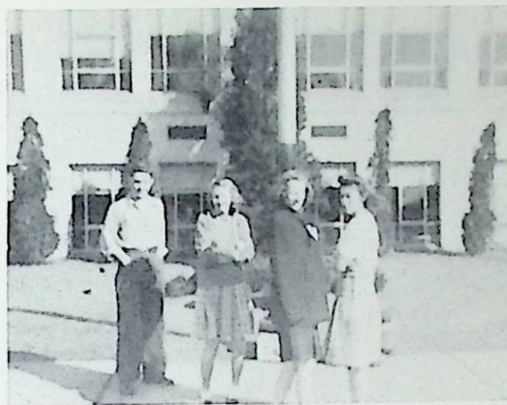
It's nicer out here!



"Aggie"



On the campus



Cold?



Around the flagpole



Teacher



All's right with the world



Pupils



At Christmastide



Windy



Now, girls!



Juanita



Hungry Kid?



Hold that line!



Break it up



Smiles and chuckles



Models



Friends



Pin-up



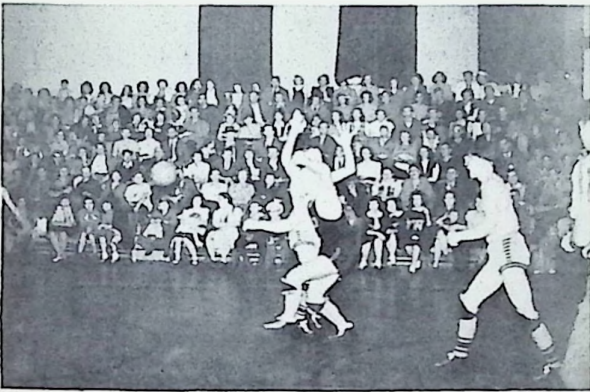
Paul and Stan



Big joke



Just pals



Freeze that ball



Amid the throng



Banana-split



Prince of Peace



Ladies' man

AROUND

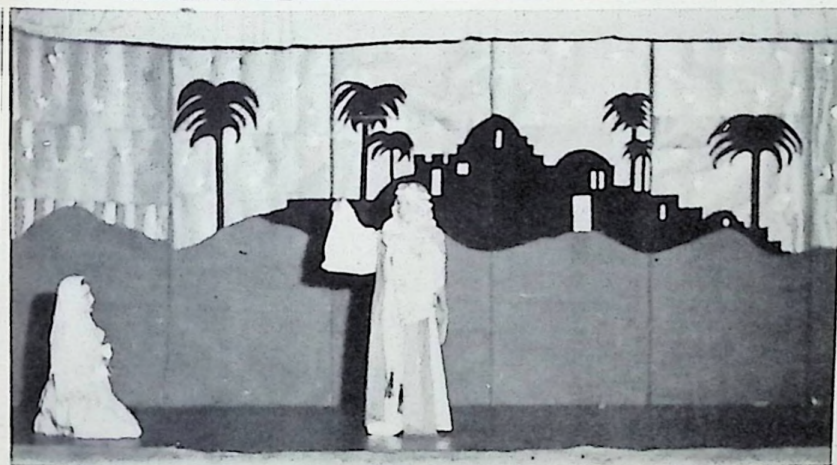


W. H. S



VARIA







Atta-boy!



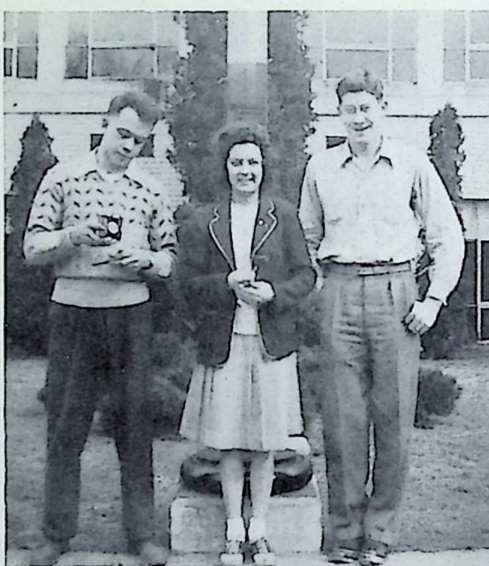
"Doc"



Just Seniors



Little "Putt"



Man shortage?



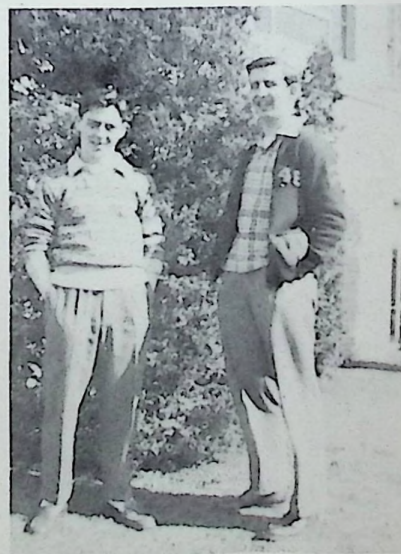
Future star



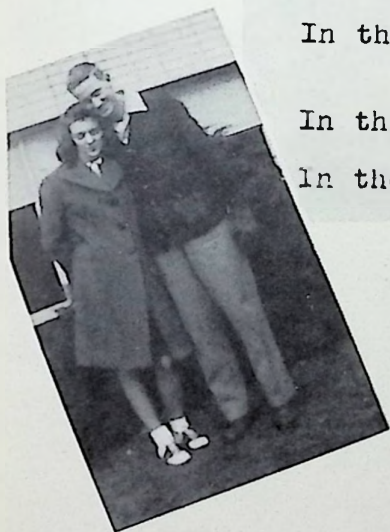
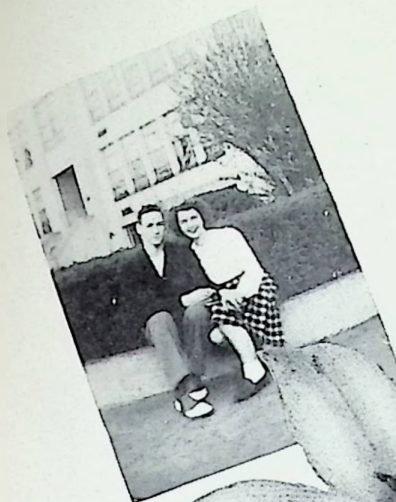
"Mert"



Is this Barb?

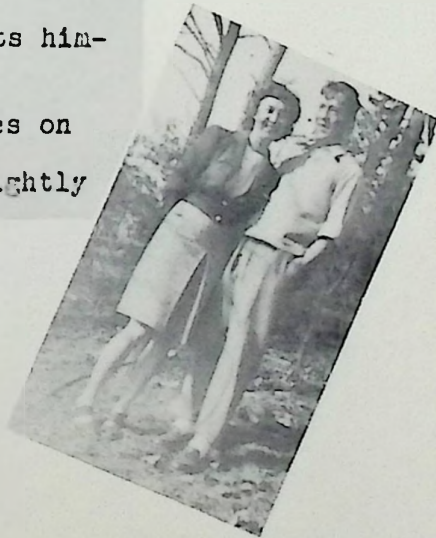


Apple pie



"In the Spring a fuller crimson comes upon
the robin's breast;
In the Spring the wanton lapwing gets him-
self another crest;

In the Spring a livelier iris changes on
the burnish'd dove;
In the Spring a young man's fancy lightly
turns to thoughts of love."



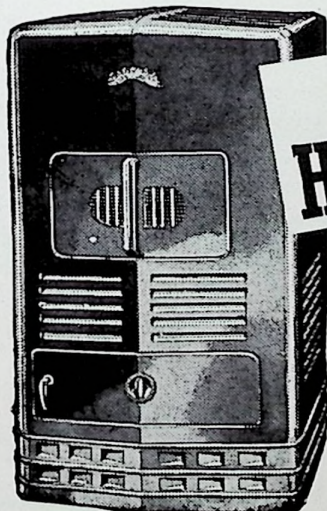
Advertising



ONE THING TO DO
BEFORE YOU
BUY A COAL
HEATER



See the original and
only genuine



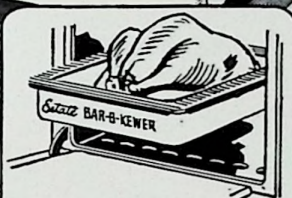
"LOOK UP YOUR HEATROLA MAN...
HE'LL MAKE THINGS HOT FOR YOU"

ESTATE
Heatrola
GAS RANGES



It's the range
with the wonderful
BAR-B-KEWER plus
all these fine features:

- Heavily-insulated Air-Flow Oven
- ThermEstate Oven Heat Control
- High-low cooking top burner
- Automatic top burner lighting
- Handy utensil drawer



Separate Meat Oven

Broils whole chickens, turkeys, hams, roasts, to new deliciousness. Leaves oven free for baking cakes, pies, biscuits, casseroles at the same time.

Estate
HEATROLA

For Sale By

THE COVERT

FURNITURE COMPANY

3975 Gallia Street

Phone Boston 34

NEW BOSTON, OHIO

R. R. LITTERAL

GROCERIES

MEATS

VEGETABLES

PHONE 980-L

WE DELIVER

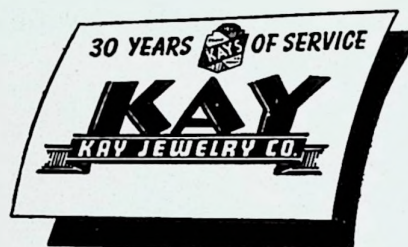
SMITH & AEH

MEATS and GROCERIES

WE DELIVER

PHONE 22

WHEELERSBURG, OHIO



SGT. M. H. FLEECE, MGR.

COMPLIMENTS

OF

WHEELERSBURG
BEAUTY SHOP

PHONE SCIOTO 966-R

WHEELERSBURG, OHIO

If Your Radio Starts Stuttering,
If Your Iron Refuses To Heat,
If Your Fan Begins Fluttering,
And Your Mixer Will Not Beat,
CALL S-950-K

PRESTON'S
SERVICE SHOP

WHEELERSBURG, OHIO

COMPLIMENTS

OF

YE OLD TAVERN
CANDY SHOPPE

CARL HERMS, PROP.

WHEELERSBURG, OHIO

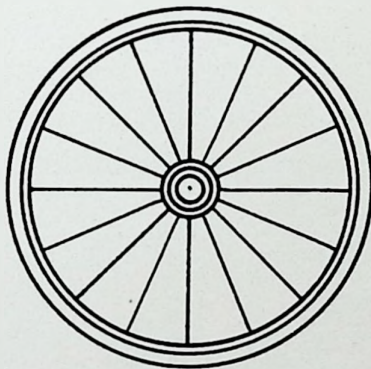
COMPLIMENTS
OF
McCURDY—SCOTT
FUNERAL HOME

PHONE 51-R

AMBULANCE SERVICE

MEET ME AT

THE WHEEL



F
O
U
N
T
A
I
N

S
A
N
D
W
I
C
H
E
S

LUNCH

FRANK LANTHROP, Proprietor

SEE'S GREENHOUSE

H. G. KELLOGG, Successor

Flowers For All Occasions

PHONE 188-L
SCIOTOVILLE, OHIO

COMPLIMENTS OF
JOHNSON BROS.
GROCERY

1101 MAYO
SCIOTOVILLE, OHIO

COMPLIMENTS OF

CONKLIN'S

AUTO SERVICE

JAKE'S RESTAURANT

SCIOTO 959-G

WHEELERSBURG, OHIO

EVERYTHING IS JAKE AT JAKE'S

HARRY J. MILLER, Prop.

STAN'S GARAGE

General Repair

Motor Tune-Up

PHONE 214-M SCIOTOVILLE, OHIO

1017 HARDING AVE.

COMPLIMENTS

OF

G. E. KOCH

HARDWARE

Make your dollar have
more sense

PHONE 968-L WHEELERSBURG, OHIO

COMPLIMENTS

OF

MIRIAM'S
BEAUTY SHOP

PHONE 952-Y GLEIM ROAD
WHEELERSBURG, OHIO

G. H. MILLHUFF

DRY GOODS — NOTIONS

GROCERIES

PHONE 15 SCIOTOVILLE, OHIO

HIBBITT'S
HARDWARE CO.

Complete Line of
HARDWARE—HARNESS—SEEDS
and SPORTING GOODS

315 HARDING AVE. PHONE SCIOTO 23-X

WHEELER & SCOTT

MEATS — PRODUCE

GROCERIES

PHONE 88

226 HARDING

Prescriptions Toilet Articles

SMITH DRUG CO.

5th and CHILLICOTHE STREET
PHONE 150

Sandwiches—Ice Cream—Candy

BRAGDON'S

THE VALUE STORE
OF THE VALLEY

Your Home Owned Department
Store Since 1897

COMPLIMENTS
OF

C. G. TURNER
SHOE REPAIR SHOP

SCIOTOVILLE, OHIO

JUSTICE IMPLEMENT
and MOTOR CO.

Complete Line of
HARDWARE, FARM MACHINERY
HUDSON AUTO
and WHITE TRUCKS

COMPLIMENTS
OF

OHIO POTTERY
and GIFT SHOP

PHONE 986-Y WHEELERSBURG, OHIO
ON ROUTE 52

COMPLIMENTS
OF

GILPIN DAIRY

PHONE 921-L

ROUTE 140

COMPLIMENTS OF
GEORGE LANTZ'S
GENERAL STORE

Groceries and Feed

PHONE 1009-L
SLOCUM STATION

W. ELTON SMITH, Pharmacist
SCIOTO DRUG CO.

224 HARDING AVENUE
SCIOTOVILLE, OHIO

A TRUE DRUG STORE

COMPLIMENTS OF
GRAF LUMBER
& BUILDING CO.

6467 BAHNER ROAD
SCIOTOVILLE, OHIO

CONGRATULATIONS TO
CLASS OF '46
TEXACO
DISTRIBUTORS

J. D. THOMAS
PHONE BOSTON 21
NEW BOSTON, OHIO

COMPLIMENTS
OF
POP'S PLACE

GAS—OIL—EATS

WHEELERSBURG, OHIO
ON ROUTE 52

Complete
One Stop
Service

CONGRATULATIONS
CLASS OF '46
FROM
DEVOSS
and
DONALDSON

ARCHITECTS

NATIONAL BANK BUILDING
PORTSMOUTH, OHIO

COMPLIMENTS
OF
STEWART'S
GROCERY

VINTON and YOUNG STS.

PORTSMOUTH, OHIO

COMPLIMENTS
OF
COOPER BROTHERS

PHONE BOSTON 82

NEW BOSTON, OHIO

SAMUEL LEVI & CO.

FURNITURE

840-844 GALLIA

NEXT TO LaROY THEATRE

COMPLIMENTS OF
CHABOT'S
SUPER SERVICE

Distributor

PURE OIL GAS
and U. S. TIRES

COMPLIMENTS OF
LAUREL
BISCUIT CO.

1609 CHILlicoTHE

PORTSMOUTH, OHIO

COMPLIMENTS OF
Schindell's Jewelers
C. C. SCHINDELL
PHONE 2458 LaROY THEATRE BLDG.
The Joyce Co.
Jewelers
2901 GALLIA PHONE 2740

COMPLIMENTS
OF
J. R. SCHOONOVER

1202 NINTH STREET

PORTSMOUTH, OHIO

THE
REIDENBACH PHARMACY

PRESCRIPTION DRUGGIST

MASONIC TEMPLE

WHEELERSBURG, OHIO

PHONE SCIOTO 51-Y

COMPLIMENTS OF
NAN L. MURPHY
APPAREL SHOP

HEADQUARTERS FOR
JUNIOR and MISSES WEAR

Nora A. Wilhelm Gladys Higgins Bertha DeBoer

813 GALLIA PORTSMOUTH, OHIO

COMPLIMENTS OF
DOERR'S
HARDWARE

519 SECOND STREET
PORTSMOUTH, OHIO

CRAIGMILE'S
FURNITURE CO.

936 GALLIA STREET

Homes Furnished
Complete

COMPLIMENTS
TO THE CLASS OF '46
SCIOTO COUNTY
FARM SUPPLY

G. M. ROSS

COMPLIMENTS
OF
BUICK COMPANY

WATKINS
MOTOR SALES

PHONE 870 PORTSMOUTH, OHIO

DRUMMOND
IMPLEMENT STORE

1518-1534
GALLIA STREET

PHONE 30 PORTSMOUTH, OHIO

COMPLIMENTS
OF
MARVIN JONES
AUTO SALES

OFFNERE and GALLIA
PORTSMOUTH, OHIO

RICHARDS' NEWS

1422 GALLIA STREET
OPPOSITE TRINITY CHURCH

Most Complete Selection of Newspapers
and Magazines In The City

Hallmark Greeting Cards

WHEELERSBURG
CUT RATE GROCERY

PHONE SCIOTO 982-R

FRESH MEATS and QUALITY GROCERIES
AT LOWER PRICES

"PETE" HOSKINS, Proprietor

COMPLIMENTS
OF
BLAIR'S
BARBER SHOP
WHEELERSBURG, OHIO

ROY ZUEFLE
Authorized Dealer for
HAMILTON ELGIN
BULOVA GRUEN
WATCHES
563 SECOND ST. PORTSMOUTH, OHIO

DIAMONDS WATCHES JEWELRY
RADIOS ELECTRICAL APPLIANCES

COMPLIMENTS
OF THE

ROBERTS & CO.
CREDIT AT NO EXTRA COST
MORREY WAINSTEIN, Mgr.
421 CHILLICOTHE STREET

FRATERNAL ORDER
OF EAGLES

AERIE NO. 2271
NEW BOSTON, OHIO

COMPLIMENTS OF
SCHAEFER'S
SUPER MARKET

2034 ELEVENTH THIRD and MARKET
THIRTEENTH and CHILLICOTHE

COMPLIMENTS OF
MILNER HOTEL

Reservations For Private Parties
PHONE 2191 2nd and Market
PORTSMOUTH, OHIO

GEMPERLINE
FURNITURE CO.

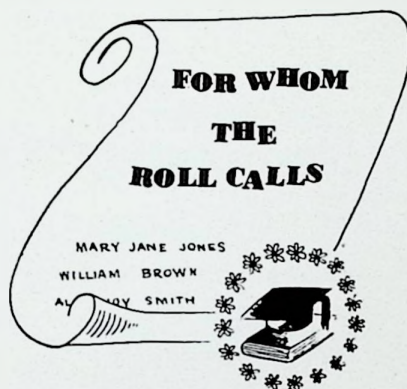
612-16 SECOND STREET
PORTSMOUTH, OHIO

Authorized Dealer of
Westinghouse Electrical Appliance and
Original Coles Hot Blast Heaters

GLOCKNER
CHEVROLET CO.

Your Chevrolet Dealer
Since 1915

2nd and CHILLICOTHE STREET



CONGRATULATIONS

from

Marting's

GIRLS! A Radio Program For You—
"CALLING ALL GIRLS"
Every Saturday At 11:00 A. M.

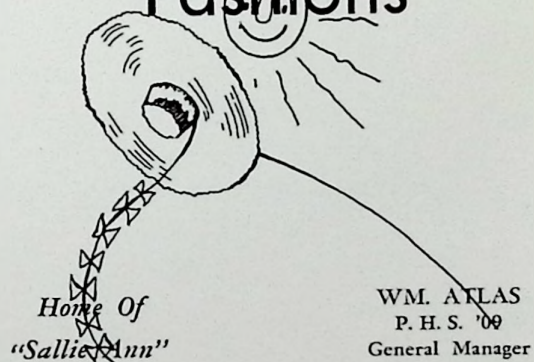
W P A Y

Atlas Fashions

Costumers to Scioto "Anns" Since 1895 — Our 51st Year

FEATURING ...

California
Fashions



Home Of
"Sallie Ann"

WM. ATLAS
P. H. S. '09
General Manager

RICHMAN BROS.
CLOTHES

Direct From Our Factory To You
No Middle Man Profit

311 CHILLICOTHE STREET

COMPLIMENTS OF

LOLA'S
BEAUTY SHOP

Assistant-BEULAH FUGIT

PHONE SCIOTO 92

5728 GALLIA

DR. JAMES KELSO

OPTOMETRIST and CHIROPRACTOR

EYES EXAMINED

GLASSES FITTED

PHONE BOSTON 2
NEW BOSTON, OHIO

Cleaning and Pressing

ALSO

WE LIVE TO DYE
WE DYE TO LIVE
THE MORE WE DYE
THE BETTER WE LIVE

McClain Cleaners

3966 GALLIA ST. NEW BOSTON, OHIO

COMPLIMENTS

TO THE CLASS OF '46

ZIMMERMAN'S

OFFICE SUPPLIES

AND EQUIPMENT

UNDERWOOD TYPEWRITERS

810 Chillicothe Street
PHONE 2490 PORTSMOUTH, OHIO

RAMEY'S
FEED STORE'
AND HATCHERY

FLOUR—MEAL—FEED

Distributors of
ESHELMAN FEEDS

PHONE SCIOTO 233-L
WHEELERSBURG, OHIO

OUR BEST WISHES
TO THE GRADUATES OF
WHEELERSBURG HIGH SCHOOL

DISTEL
FURNITURE CO.

PHONE 2490 810 CHILLICOTHE

CRICHTON
OFFICE SUPPLIES

740 5th STREET
PORTSMOUTH, OHIO

Everything For The Office

COMPLIMENTS OF
ORTHMEYER'S
BAKERY

550 GALLIA STREET
SCIOTOVILLE, OHIO

COMPLIMENTS
TO
CLASS OF '46
BOURGHOLTZER'S
DRUG STORE
SCIOTOVILLE, OHIO

IF A BOY LOVES A GIRL
THAT IS HIS BUSINESS.
IF A GIRL LOVES A BOY
THAT IS HER BUSINESS.
IF THEY GET MARRIED
THAT IS THEIR BUSINESS.
IF THEY FURNISH A HOME
THAT IS OUR BUSINESS.

THE SHEETS
FURNITURE CO.

526-532 SECOND STREET
PORTSMOUTH, OHIO



TASTY PASTRIES
BLUE BIRD
BAKERY

JOHN COUNTS, Prop.
PHONE BOSTON 18 4208 GALLIA ST.

COMPLIMENTS OF
SOWARDS
FUNERAL HOME

3983 GALLIA NEW BOSTON, OHIO

ED. LOCKNER'S
AUTO SUPPLY

Distributors of
TIRES—BATTERIES—MOTOR OIL
SEAT COVERS—PISTON RINGS

Ninth and Chillicothe Sts.
PHONE 2937 PORTSMOUTH, OHIO

COMPLIMENTS OF
THE HOTEL HURTH

TO THE CLASS OF 1946
Direction American Hotel Corporation

H. T. McCRAKEN, Manager

Shoes For The Entire Family

SELBY SHOES

1007 GALLIA STREET

PORTSMOUTH, OHIO

TILENE'S

"the smart shop for girls"

sizes 7-17 10-20

PORTSMOUTH, OHIO
GALLIA AND GAY ST.

COMPLIMENTS OF
NU-WAY
CLEANING CO.

OFFICE AND PLANT
2314 GALLIA ST. PORTSMOUTH, OHIO

COMPLIMENTS OF
JUANITA'S
BEAUTY SHOP

1424 GRANDVIEW AVE. PHONE 3046

JUANITA QUEEN, Owner

H. B. McGAHAN

EXTERMINATING SERVICE
WASHER and APPLIANCE SERVICE
HOME INSULATION

1236 Offnere Street Portsmouth, Ohio
PHONE 3276

E. H. RUSSELL
GLASS COMPANY

GLASS FOR ANY PURPOSE

"Give Us A Break"

1106 GALLIA PHONE 460

CRISPIE CREME

DONUTS

1546 GALLIA STREET

PORTSMOUTH, OHIO

COMPLIMENTS TO

THE CLASS OF '46

FROM

COOK'S
BARBER SHOP

227 Harding Ave.

Sciotoville, Ohio

COMPLIMENTS

DAISY JUNE

NICK NAGLE

R. C. SCHOMBURG

HAMBURGER SHOP

SOHIO STATION

P. C. BAUMAN

PATTERSON

MOTOR CO.

KAISER — FRAZER

Sales and Service

PHONE 1216

1518 Gallia St.

Portsmouth, Ohio

COLEMAN'S MARKET

2327 GALLIA ST.

PORTSMOUTH, OHIO

FRESH FRUITS and VEGETABLES

GROCERIES and MEATS

Open Daily Except Sunday

GOOD CLOTHES

FOR MEN AND BOYS

WOLFE

MURFIN'S

Insurance Agency

"INSURE IN SURE INSURANCE"

1542 Gallia Street

Phone 446

PORTSMOUTH, OHIO

STOP AT

MODERN GRILL

FOR FINER LUNCHES

Good Service

Sodas & Sundaes

836 GALLIA

PORTSMOUTH, OHIO

Next To Columbia Theatre

COMPLIMENTS
TO
CLASS OF '46

OPAL'S
BEAUTY SHOP

PHONE 969-F WHEELERSBURG, OHIO

COMPLIMENTS

CLIFF JONES
MOTOR SERVICE

TEXACO GAS AND OILS

SCIOTOVILLE, OHIO
PHONE SCIOTO 9 5737 GALLIA

GILL
FUNERAL HOME

Ambulance Service

PHONE 100

5602 GALLIA PORTSMOUTH, OHIO

COMPLIMENTS
TO THE CLASS OF '46
from the

SEARS, ROEBUCK
AND COMPANY

302 CHILlicothe STREET
PORTSMOUTH, OHIO



