

the
55
Wheel



AUTOGRAPHS

Bob Huffman

Johnny Danner

Jake Lee

ROGER HAZU

Neil "Hot Rod" Minger

Betty Davis

Love you, Mom
Dicki Stevenson
Lucas 1958-59
S. P. H. S.



1955
1956
1957

Ed Bay
551

*Good Luck
Jensen Ward
1955*

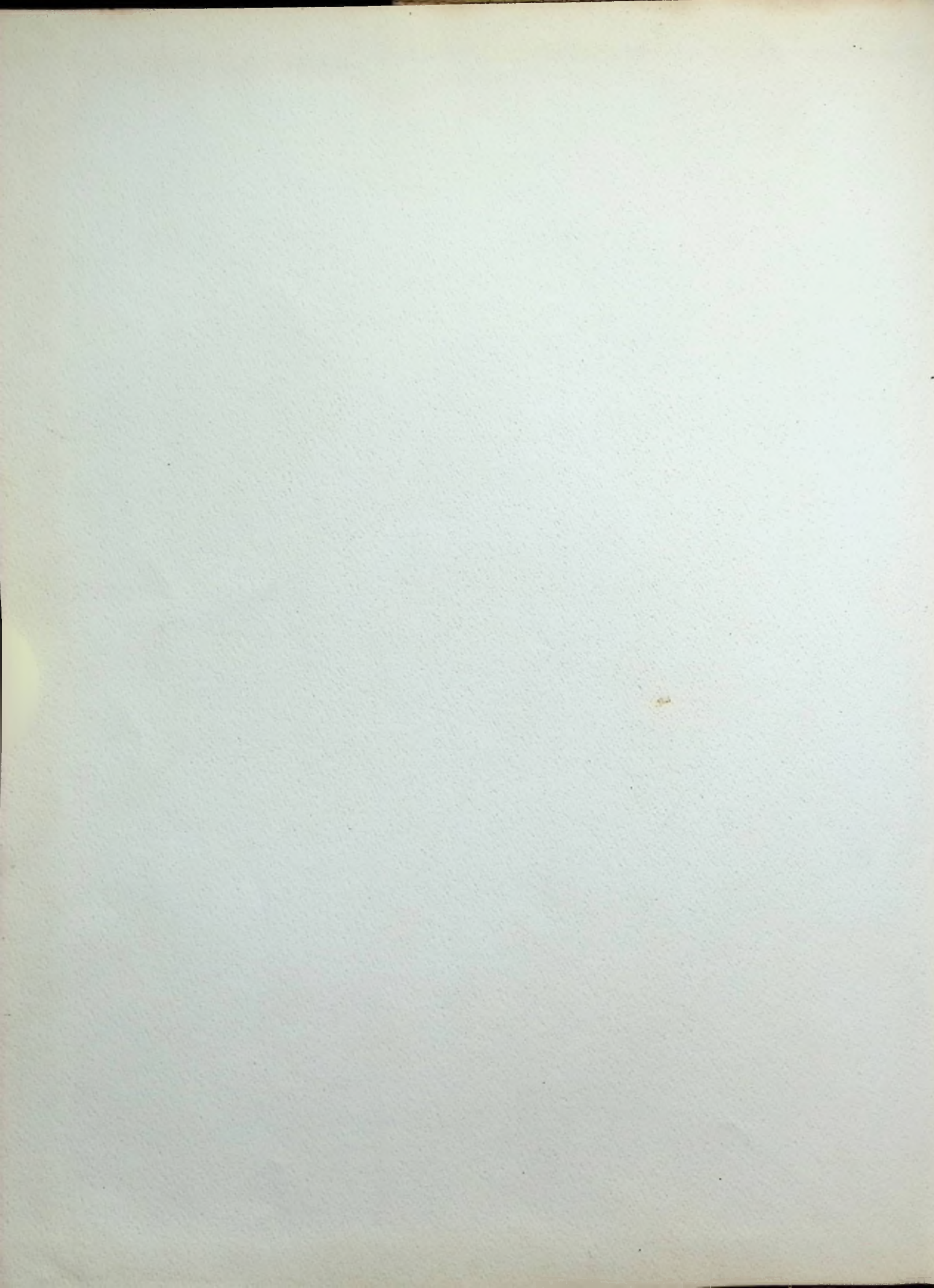
SCHOOL

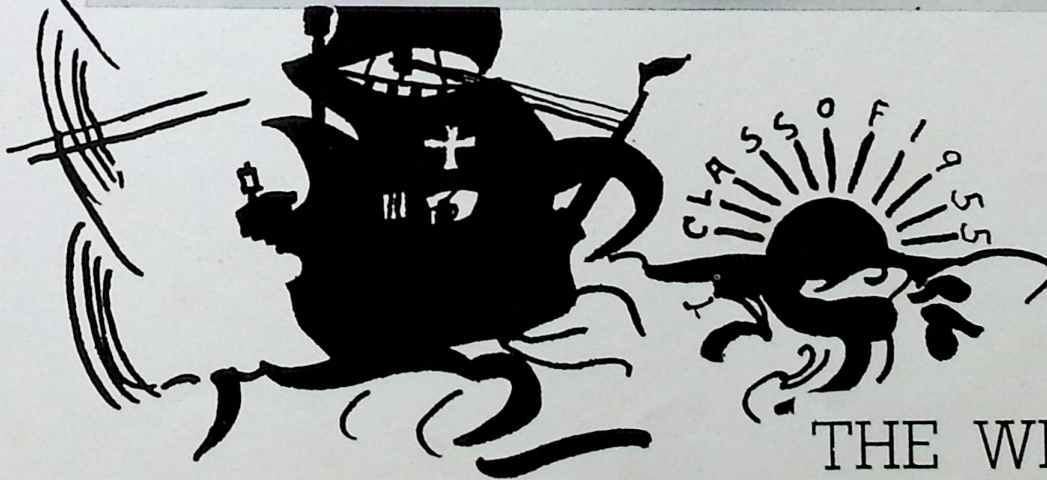


*Pat Christian
"Sr. '55"
A.H.S.*

*Best
Luck
Jensen Ward
1955*

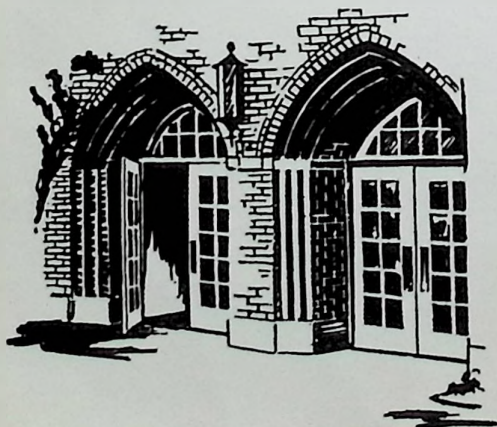
*Bucky DeCamp
'59"*





THE WHEEL

Wheelersburg



High School





EDWARD R. McCOWEN

County Superintendent

County Superintendent McCowen received his BS degree in Education from Ohio University, the Masters Degree from Northwestern University and has attended both Otterbein College and Harvard University.

Mr. McCowen said in a statement to us, "The Rural Schools of Scioto County are continuing to meet the great demands brought about by the impact of a great enrollment increase. Several Districts are in the process of starting new school construction amounting to somewhat over a million dollars. This money is coming from the Federal Government as a result of the A Plant. Rural Schools have already received thousands of dollars for school operation from the same source." Mr. McCowen continued his statement with this conclusion, "We shall continue to strive for the best in buildings and better educational opportunities for all boys and girls in our Rural Schools."



MISS KATHALEEN SKIVER

Secretary and Office Assistant

Miss Skiver, a graduate of Wheelersburg High School, has completed her fourth year as office secretary to the principal.

Miss Skiver has attended the Office Training School in Columbus. She was formerly employed in the office of the Selby Shoe Company and at Curtiss Wright in Columbus.



JACOB H. SEE
Principal

Mr. See has successfully served the past five years as principal of the Wheelersburg School. He has received two degrees from Ohio University: B.S. Ed., and M. Ed.

His outstanding educational achievements are varied. Mr. See has taught thirteen years in both elementary and secondary public schools, and has also taught mathematics five years in the Ohio University Branch Night School. The assistant principalship was his two years previous to his present position as principal.



ARTHUR D. PRESTON
Assistant Principal

Mr. Preston has served his first year as Assistant Principal at Wheelersburg High School. He has attended Ohio University, University of Cincinnati, and University of Wilmington. At Wilmington he earned his B.S. Ed.

He has been employed twenty-four years in the teaching profession. An outstanding feature of his school activities is that he acted as Basketball Coach for seven years.





S. A. PURTEE



WAYNE HIBBITTS



CARL HERMS

Board Of Education



RAYMOND CONKLIN



HARPER PRESTON

Faculty

JO SUE BURKHART
Science, Physical Educa-
tion.

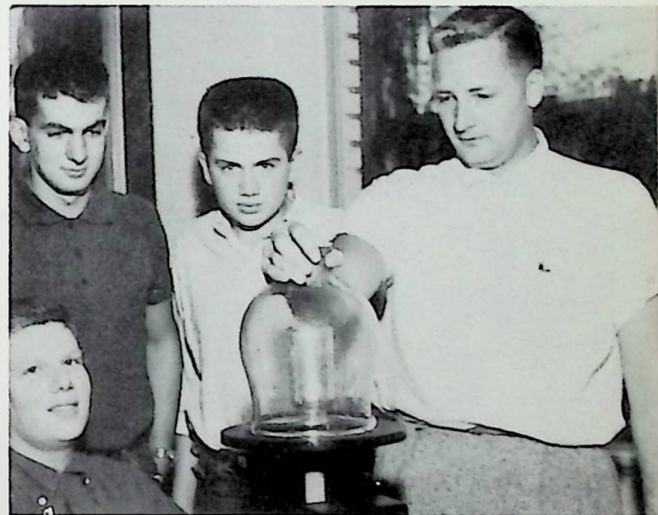
LOIS THOMPSON
Spanish, English



Dedicated To Our Faculty



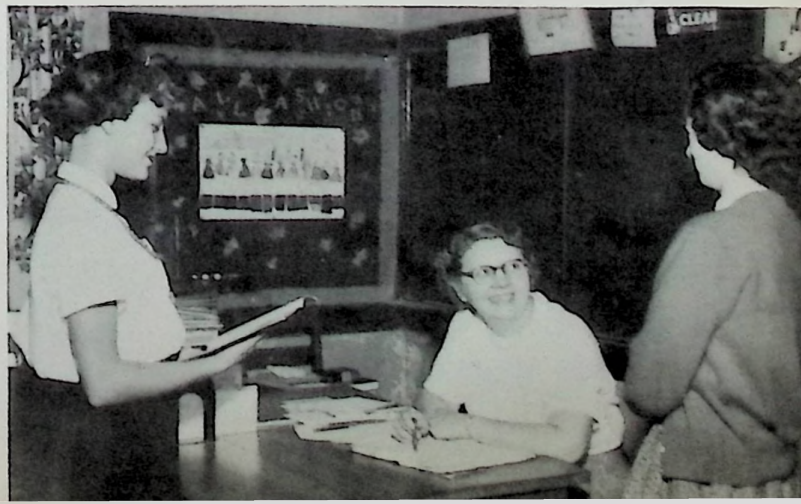
CHARLES BOYD
Driver Training, Geog-
raphy, Bookkeeping.



DONALD GROH
Physics, Biology, Science



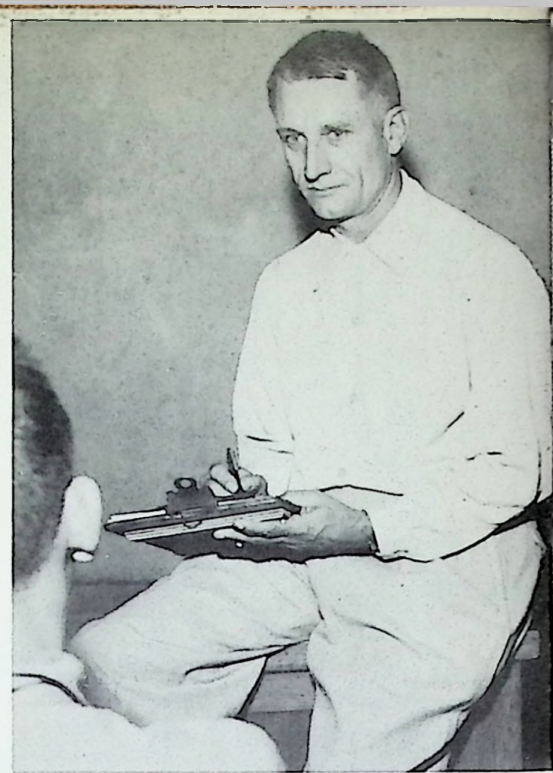
JOHN SHAFFER
Shop



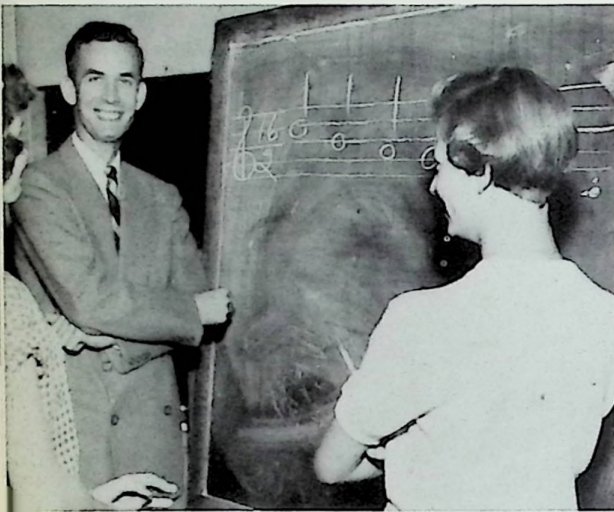
GRACE SCHINDLER
Home Economics



JOHN MILLER
History



HAROLD DUDUIT
Math, Social Living, Business Law.



GEORGE TAYLOR
Instrumental Music

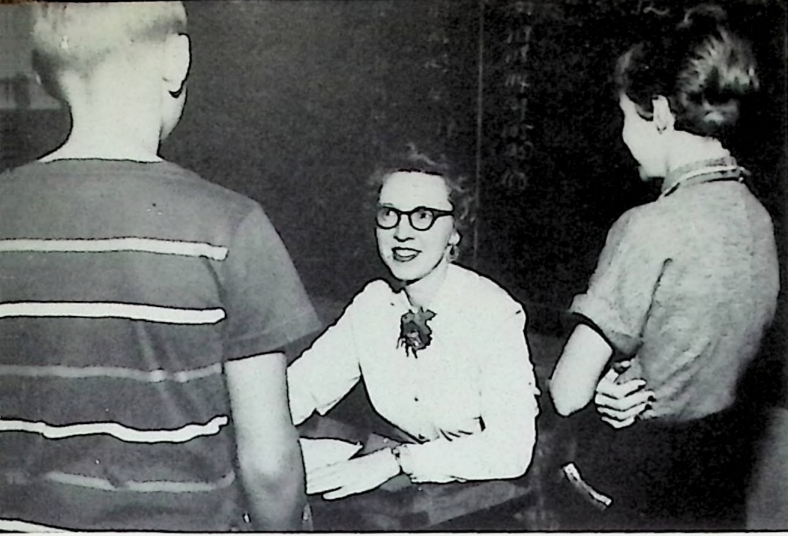


SARAH ANN HARRISON
Latin, Literature, Speech

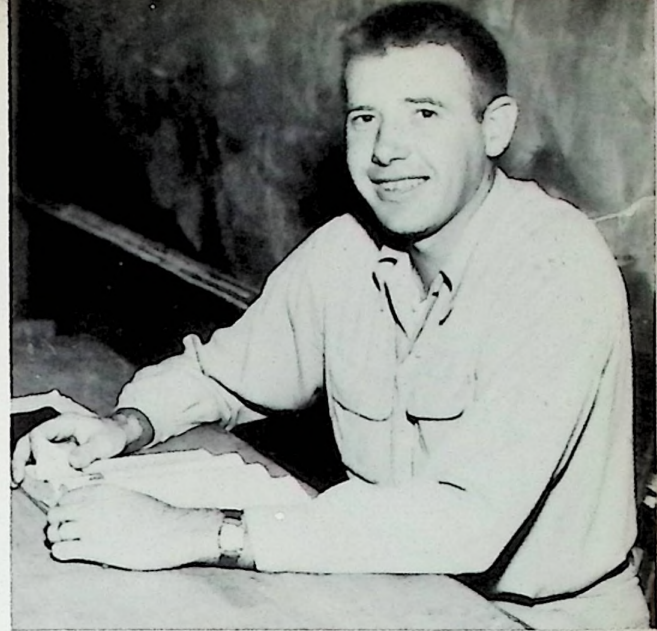


LYDA BELLE SHEPHERD
Commercial Subjects





WILLA SUE RICHARDS
English



CLAUDE ESTEPP
Science, Economic Geog.,
Physical Ed., Coach.



ANDREW HOPKINS
History, Psychology, Physi-
cal Ed., Coach.

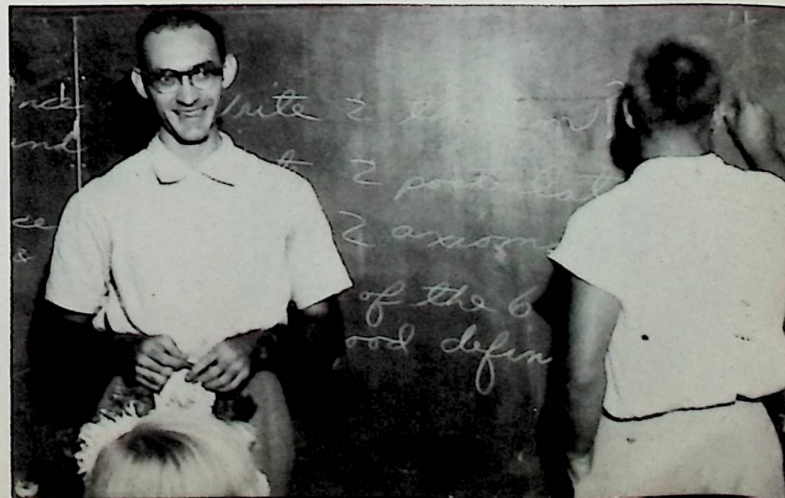


ANNA LOU LITTERAL
Vocal Music

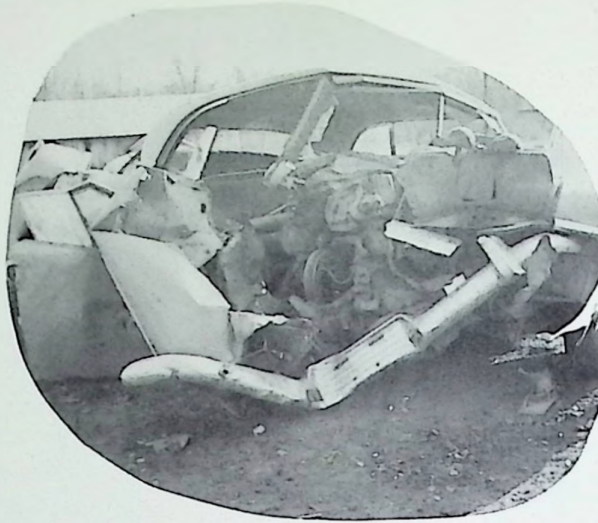
GERALDINE SCHERER
English



FORREST COLEGROVE
Math



Our bus drivers.



Somebody goofed.

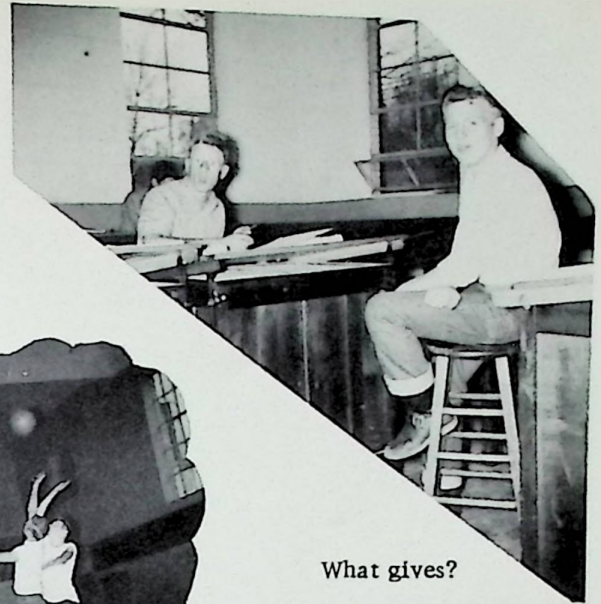


Race anyone?





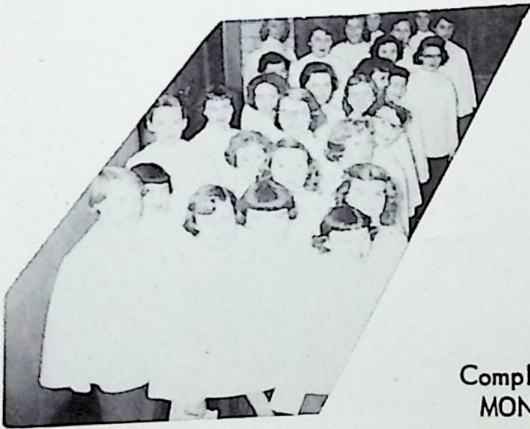
Sitting pretty.



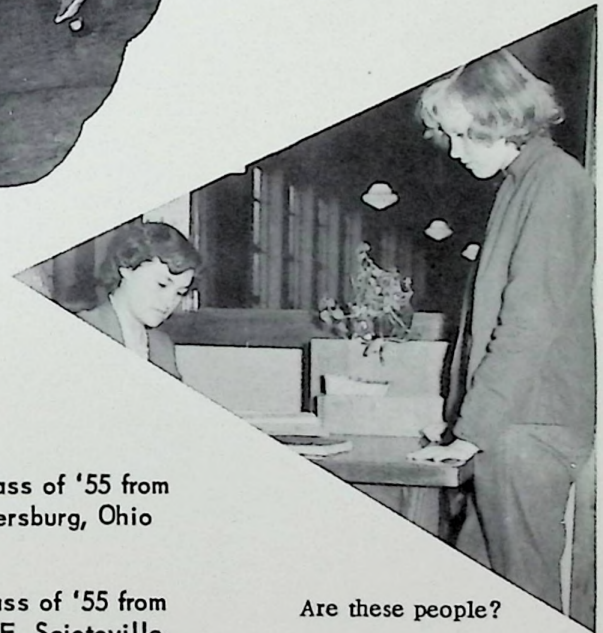
What gives?



Touchdown.



Holy Angles??



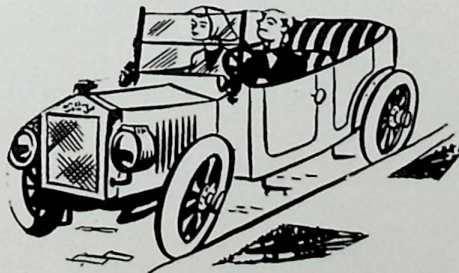
Are these people?

Compliments to the Class of '55 from
MONTAVONS, Wheelersburg, Ohio

Best wishes to the class of '55 from
HIBBITTS HARDWARE, Sciotoville



Sleepy Heads.



Let Me Go Lover.

Vision In Room 39

Once when I had finished dinner, it was one day in the winter,
And the snow was round about us, drifted deep upon the ground,
In thirty-nine I sat a-thinking, fancy unto fancy linking
Till finally I started sinking, sinking into sleep profound.
Of a dream I had I'll tell you, of a vision which took place,
In thirty-nine, the study room.

Presently my name was spoken, thus the silence had been broken,
By a tall and stately person, clothed in flowing robes of white.
There upon his shoulder sitting, perched a blackbird, eyes a-twitting,
With its body always flitting, flitting hither left and right.
But once again the man was speaking, and his words left my brain reeking,
"You are here to see the light."

"What are you?" I cried in horror. And he answered with much furor,
"We are but the guardian angels of the students in your school.
For Wheelersburg is our dominion, and students there, in our opinion,
Are made to work, both peg and pinion, and follow strictly all the rules.
You will see some fine examples, we will show you many samples."

Said the blackbird: "that we'll do."
Then at once the scene was shifted, to a grout height I was lifted,
And I looked upon a sight, 'twas Mr. Estepp's study hall.
Then at once I saw him sneaking, upon a student who was sleeping,
Unaware of Estepp's creeping, up to his place nearby the wall.
Estepp grasped him by the shoulder, "Okay, Johnson, dreams are over;
See you later in the hall."

Once again the scene was changed, and through the building we had ranged,
It was the Senior English Class that now I found before my eyes.
The Seniors every one lamented, and with good cause, I consented,
For with Macbeth they were confronted, the room was filled with tears and cries.
But Miss Richards turned an ear, deaf to all, she could not hear
The various complaints and sighs.

And now we are in twenty-two, 'Tis speech class, there much ado
For students are engrossed in learning, the finer art of speaking well.
Eagerly they wished the ringing, of the bell which would be bringing,
Freedom from this long and seeming, place much like a citadel.
Each student in his seat did squirm, awaiting name and thus his turn
To speak, and thereby ring his knell.

This and more I had observed, and it left me quite unnerved,
When once again this Person spoke, in monotone much like a jum,
"Now, you see, we just protect you, from these things which would affect you,
And would in no small doubt wreck you, mentally in years to come.
We protect you from the teachers, you students are our chosen creatures,
We watch over every one."

All at once my dream was broken, by a term quite aptly spoken
As I came back to my senses, I was greeted with reprove.
Up I looked and I was staring, into the eyes of Miller, glaring
Watching me, and doubly daring, me to make just one false move.
"Okay buddy, you know where the office is, so proceed there,
And 'till I get there, don't you move."

In the office now I'm waiting, about my fate I'm comtemplating.
I wonder all about my vision, and the scenes revealed to me.
As I sit, I stop to wonder, and my thoughts are torn asunder,
But a voice not unlike thunder, now approaches Mr. See.
Alas! Now I have learned my lesson, they have hurt my prize possession,
No more naps in study hall for me.

Robert W. Harner.

The Class Of '55



GRADUATION DAY!

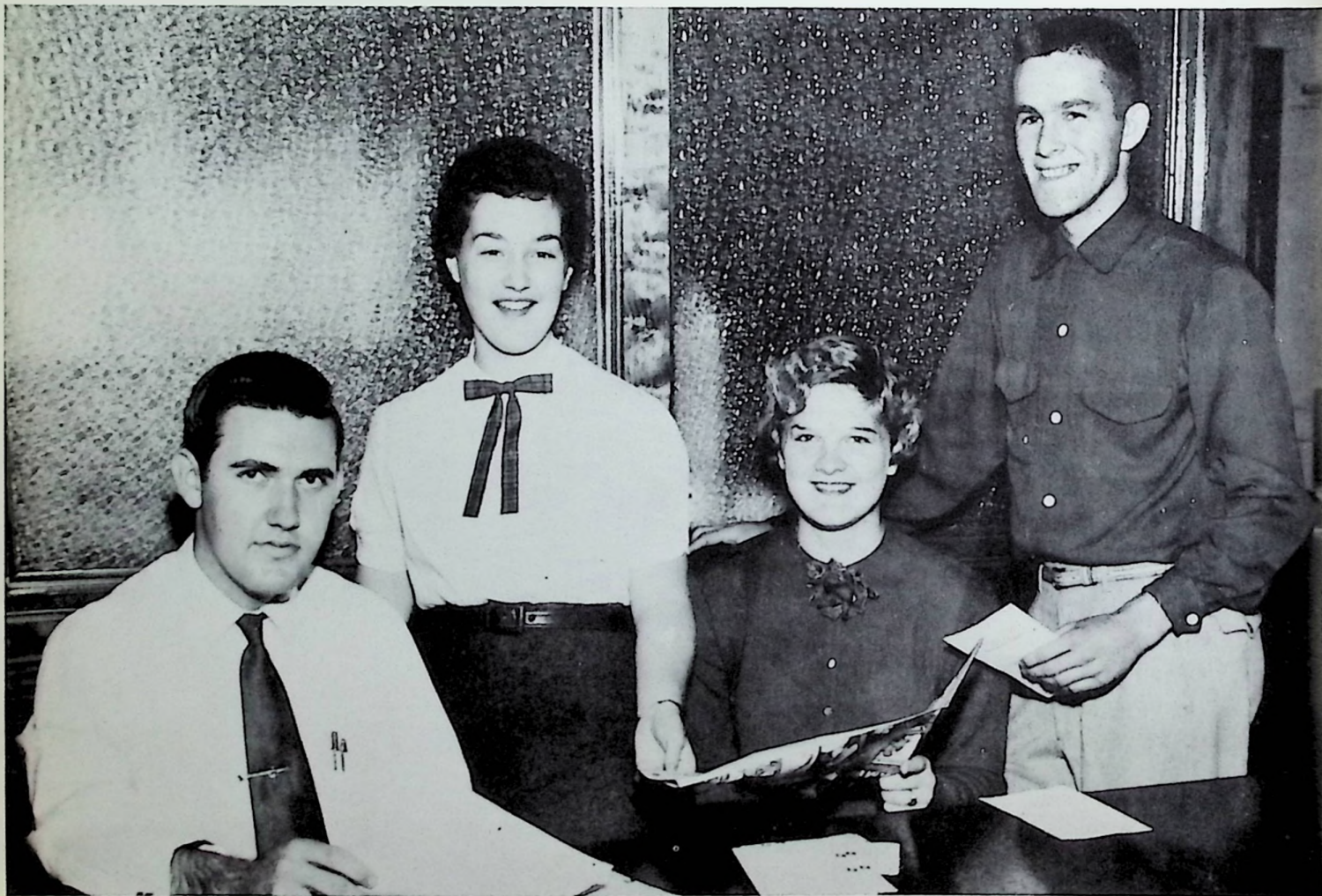
It's so much different from what we anticipated . . . Oh, yes, we are proud, and, truthfully, relieved that we passed all our final examinations . . . But everything -- our lonely class rooms, our stacked textbooks, our empty desks -- everything is so FINAL.

Our lives HERE are over, but we feel well prepared to face our futures with confidence. We know that we go out to live in the greatest country on earth, a country that will be what we, America's Youth, will make of it.

CLASS MOTTO: Climb though the rocks be rugged.

CLASS COLOR: Blue and Gold

CLASS FLOWER: Yellow Rose



SENIOR CLASS OFFICERS:

ROBERT HARNER
Pres.

CONNIE BUSSLER
Treas.

SUE FRICK
Sec.

BILL BOYER
Vice Pres.



ELIZABETH MASSIE
"Lib"

Band 1,2,3,4; Glee C. 1,2,3,4; Mixed Ch. 3,4; accomp. 3,4; F.H.A. 2,3,4; Sec. 3; G.A.A. 1,2,3,4; Sigma Tau Phi 4; Newspaper 4; Festival 1,2,3,4; Queen Att. 1; Class Play 3; Pep C. 3,4; Bacc. Ch. 1,2,3; Class Pres. 1.



EDDIE SPROUSE
"Ed"
Annual Staff 3.



MARK THIEKEN
"Elick"
Class Play 3; Band 1,2; Mixed Ch. 1,2; Festival 1,2; Baseball 4; Booster C. 2,3,4.



ROSE MARIE WYMER
"Rosie"
New Boston 1; Class Play 3; Pep C. 3,4; F.H.A. 4.

Seniors



JOHN SNOOK
"John"
Library C. 1,2,3,4; Treas. 3; Latin C. 1,2,3,4; Pres. 3,4; Visual Ed. 1,2; Astronomy C. 4; Sec. 4; Camera C. 1,2; Treas. 1; Pres. 2; Class Play 3; Scholarship 1,2,3,4.

BEVERLY BEALL
"Bev"
Monroe 1; Glee C. 2,3,4; Mixed Ch. 4; Bacc. Ch. 3; Band 2,3; Majorette 2,3; Sigma Tau Phi 4; Newspaper 4; F.H.A. 3,4; G.A.A. 4; Pep C. 3; Cheerleader 4; Class Play 3.



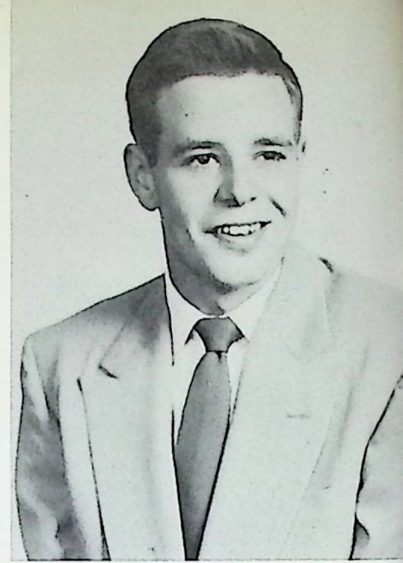


LUCY BOGGS
"Lucy"

Library C. 1,2,3,4; F.H.A. 2,3,4; Sigma Tau Phi 4; Newspaper 4; Treas. 4; Glee C. 4; Queen 4; Pep C. 3,4; Class Play 3.

CORBIN LYONS
"Pete"

Annual Staff 4; Camera C. 1,3; Class Play 3; Usher 3.



RONALD JOHNSON
"Ron Kat"

Football 3,4; Baseball 4; Indus. Arts C. 1,2,3; Booster C. 1,2,3,4; Mixed Ch. 1, 2.

WILLIAM BOYER
"Toe"

Football 1,2,3,4; Basketball 1,2,3,4; Baseball 1,2,3,4; Band 1,2; Class Play 3; Indus. Arts C. 1,3; Class V. Pres. 4.



CECELIA ANN TOLBERT
"Ceil"

Library C. 1,2,3,4; Sec. 2; Pres. 3; Sigma Tau Phi 4; Newspaper 4; Associate Ed. 4; Latin C. 1,2,4; Pep C. 3,4; Scholarship 1,2,3,4; Class Play 3; Annual Staff 4; F.H.A. 4.

SHELBY JEAN SPRADLIN
"Shelb"

Library C. 1,2,3,4; G.A.A. 1,2,3,4; Band 1,2,3,4; Glee C. 1,2,3,4; Bacc. Ch. 1,2, 3; Festival 1,2,3,4; Pep C. 3,4; Annual Staff 3,4; Sigma Tau Phi 4; Sec. 4; Newspaper 4; F.H.A. 2,3,4.

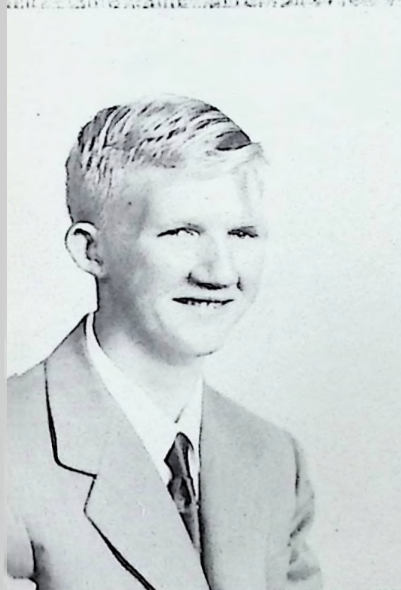




JAMES BROWN
"Jim"
Football 2,3,4.



RONALD WAMPLER
"Ron"



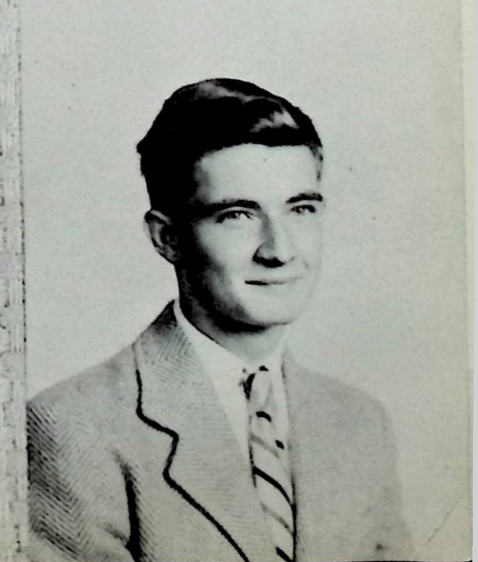
EUGENE JUSTICE
"Hustice"
Class Play 3.



JOAN HUNT
"Jo"
Library C. 1,2,3,4; F.H.A.
2,3,4; Sigma Tau Phi 4;
Treas. 4; Newspaper 4;
Glee C. 4; Pep C. 3,4; Class
Play 3; Cheerleader 4.



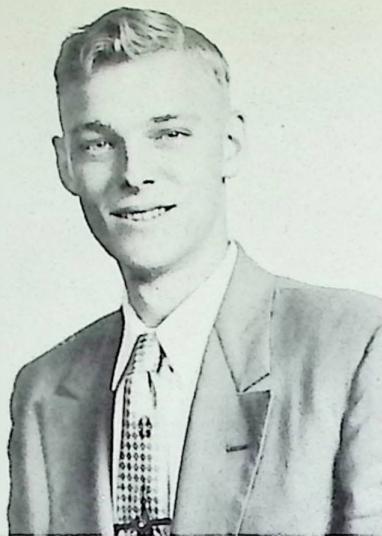
DONALD MAGGARD
"Jerome"
Library Club 1,2,3,4.



CHARLES ROOSA
"Chuck"
Maryland 1,2,3.



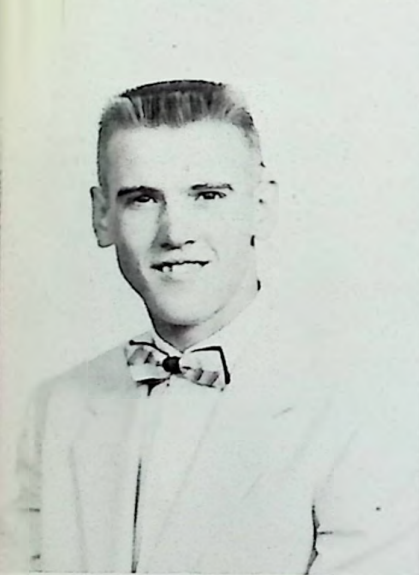
MIKE LANG
"Shorty"
Class Play 3; Industrial
Arts C. 1,2; Mixed Ch. 1,2;
Booster C. 1,2,3,4.



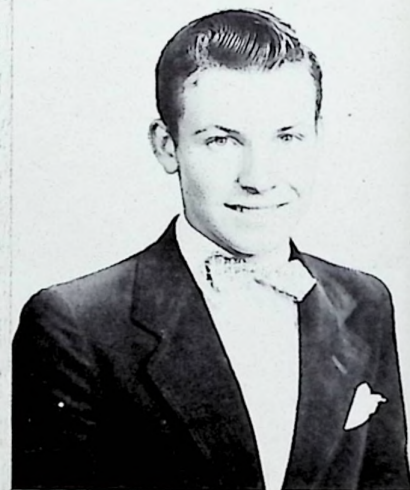
KENNETH MCGAHAN
"Ken"



HOWARD SALYERS
"Howard"
Mixed Ch. 2,3,4; Festival
2,3,4; Library C. 3.



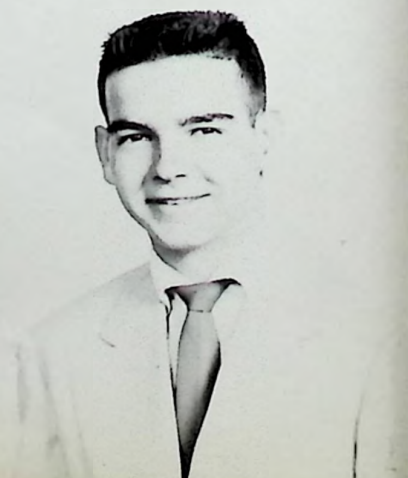
RALPH ISHMAEL
"Ish"
Football 1,2,3,4; Baseball
2,3,4; Basketball 2; Usher
3.



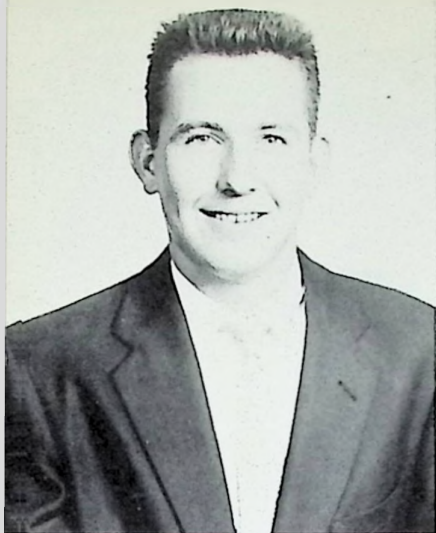
KENNETH MULLINS
"Ken"



RONALD DUNCAN
"White Perchie"
Baseball 1,2,3,4; Basketball
1,2,3,4; Class Play 3; Indus.
Arts C. 1,2; Booster C. 2,3,
4; Library C. 1; Mixed Ch.
1.



LARRY HARRIS
"Satchmo"
Band 1,2,3,4; Festival 1,2,
4; Basketball 1; Football 4;
Baseball 4; Booster C. 2,3,
4; Class V. Pres. 2.



PAUL PORTER
"Paul"
Latin C. 1; Library C. 3,4;
Football 3; Class Play 3.



WANDA LOUISE WILSON
"Lulu"
Glee C. 1,2,3,4; Mixed
Ch. 1,2,3,4; Sextet 4; Quin-
tet 1,2; Bacc. Ch. 1,2,3;
Library C. 1,2,3,4; F.H.A.
3,4; Pep C. 3,4; Queen Att.
3; Class Play 3.



MARGY ANN TILLEY
"Tilleywink"
Glee C. 2,3,4; Bacc. Ch.
2,3; Festival 1; Pep C. 3,4;
Sigma Tau Phi 4; News-
paper 4; Usherette 3;
Cheerleader 4.



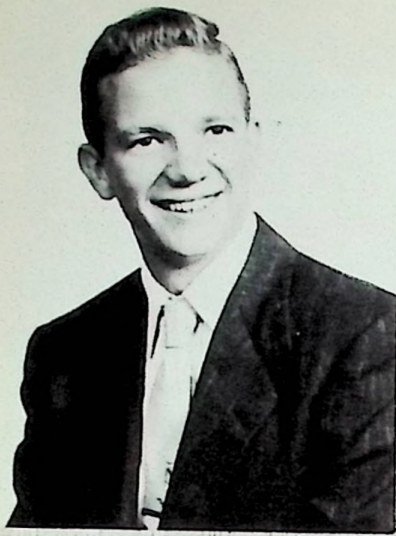
RUTH HANEY
"Ruth"
Annual Staff 4; Sigma Tau
Phi 4; Newspaper 4; Class
Play 3; Pep C. 3,4; F.H.A.
2,3,4.

FAY EVANS
"Fay"
Glee C. 1,2,3,4; Bacc. Ch.
1,2,3; Festival 1; Sigma
Tau Phi 4; Newspaper 4;
Pep C. 3,4; Usherette 3.

ELMER STONE
"Elmer"

COLLEEN FRALEY
"Colleen"
Glee C. 1; Mixed Ch. 1,2,
3,4; Quintet 1,2; Festival
1,2; Cheerleader 3,4; Class
Play 3; F.H.A. 2,3,4; G.A.
A. 1,2,3,4; Sigma Tau Phi
4; Newspaper 4; Pep C. 3.





JOSEPH W. FLESMAN
"Joe"
Baseball 2,3; Class Play 3;
Mixed Ch. 4.



GLORIA JEAN GALLION
"Jeannie"
G.A.A. 1,2,3,4; Bacc. Ch.
1,2; Glee C. 1,2,3,4; Mixed
Ch. 1,2,3; History C. 3;
Library C. 1,2; Class Play
3; Class V. Pres. 3.



DONALD HIBBITTS
"Moose II"
Band 1,2; Festival 1,2;
Mixed Ch. 1,2; Baseball 2,
3,4; Booster C. 1,2,3; Class
Play 3; Class Pres. 2.



ANNA MARIE CRAMER
"Ann"
Library C. 1,2,3,4; G.A.A.
1,2,3,4; F.H.A. 2,3,4; Sig-
ma Tau Phi 4; Newspaper
4; Pep C. 3,4; Class Play
3; Band 1,2,3; Mixed Ch.
1,2,3,4; Festival 1,2; Cheer-
leader 4.



VIRGINIA DODD
"Ginny"
F.H.A. 2,3,4; Library C.
1,2,3,4; Sigma Tau Phi 4;
Newspaper 4; Class Play 3;
Scholarship 2; Class Treas.
1; Glee C. 2,3,4; Bacc. Ch.
2,3; Pep C. 3,4.



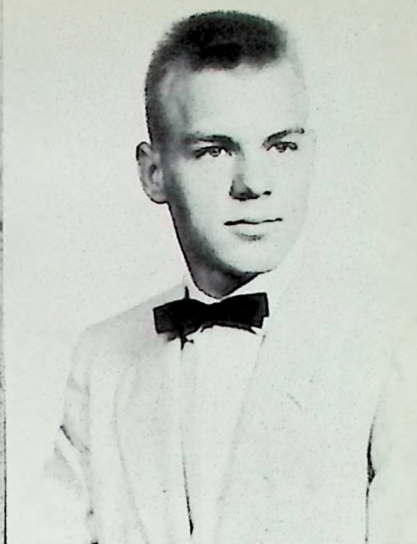
ROBERT W. HARNER
"Czar"
Latin C. 1,2,3,4; Library
C. 1,2,3,4; Camera Club
1,2; Pres. 1; Visual Ed. 1,2;
Y.F.C. 1; Usher 3; Class V.
Pres. 2; Pres. 3,4; Astron-
omy C. 4; Scholarship 1,2,
3.



GARNETT RUGGLES
"Gar"
Library C. 1,2,3,4; Treas.
2; Pep C. 3,4; F.H.A. 2,4;
Annual Staff 3,4; Sigma
Tau Phi 4; Newspaper 4;
Class Play 3.



EILEEN DELABAR
"Dilly"
G.A.A 1,2 3,4; F.H.A. 3,4;
Library C. 1,2,3,4; Pep C.
3,4; Sigma Tau Phi 4;
Annual Staff 4; Cheer-
leader 3,4; Majorette 2,3;
Class Play 3; Glee C. 4;
Mixed Ch. 1,2,3,4.



ROBERT GREEN
"Bob"
Football 1,2,3,4; Class Play
3.



SUE FRICK
"Sue"
F.H.A. 2,3,4; G.A.A. 1,2,
3,4; Sec. 3; Library C. 2,
3,4; Sigma Tau Phi 4;
Newspaper Staff 4; Editor
4; Pep C. 3; Class Sec. 3,
4; Queen Att. 3; Cheer-
leader 4.



ROSENA HORTON
"Rosena"
Portsmouth 1,2,3.



MARY MOORE
"Murry"
Library C. 2,3,4; Pep C. 3,
4; Class Play 3.



JERRY SIMONES
"Jerry"



DARLENE MAUK
"Dart"

Glee C. 1,2,3,4; Mixed Ch. 1,2,3,4; Sextet 1,2,3,4; Quintet 1,2; Festival 1,2,3; Bacc. Ch. 1,2,3; Band 2; Majorette 2; F.H.A. 2,3,4; Pres. 3; G.A.A. 1,2,3,4; Cheerleader 3,4; Sigma Tau Phi 4; Newspaper 4; Library C. 2,3,4; Class Play 3; Pep C. 3,4.



CONSTANCE JOAN
BUSSLER
"Connie"

Glee C. 2,3,4; Bacc. Ch. 2,3; Queen Att. 2; Class Treas. 2,3,4; G.A.A. 1,2,3,4; Library C. 1,2,3,4; Sigma Tau Phi 4; F.H.A. 2,3,4; Newspaper 4; Pep C. 3,4.



RUSSELL OTTNEY
"Russ"

Class Play 3; Camera C. 1,2; Usher 3; Annual Staff 3,4.



Seniors



ELAINE SPARKS
"Shorty"

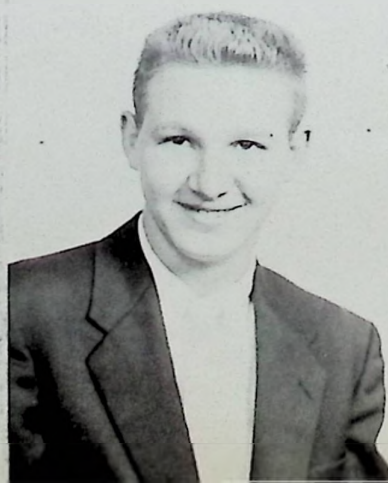
Glee C. 1,2,3,4; Festival 2,4; Band 1,2,3,4; Majorette 3,4; Bacc. Ch. 1,2,3; F.H.A. 2,3,4; G.A.A. 1,2,3,4; Sigma Tau Phi 4; Pres. 4; Newspaper 4; Pep C. 3,4; Class Play 3.

JOHN BAILEY
"Hot Rod"

Football 1; Basketball 1; Library 3; Class Play 3.

RUTH ANN WILLARD
"Willy"

Cheerleader 4; Glee C. 1,2,3,4; Mixed Ch. 1,2,3,4; Bacc. Ch. 1,2; Festival 1,2; Quintet 1,2; Class Sec. 1; Band 1,2,3; Majorette 3; Queen Att. 1; F.F.A. 1,2,3,4; G.A.A. 1,2,3,4; V. Pres. 3; Library C. 3,4.





MYRTLE MADDEN
"Mert"
Secretary 4; Scholarship
3; Queen Att. 4.



CHARLES RICE
"Chuck"
Football 1,2,3,4; Basketball
1,2; Baseball 4; Usher 3;
Indus. Arts C. 1,2; Booster
C. 1,2,3.



WILLIAM YINGER
"Bill"



VIVIAN LAWSON
"Viv"
Glee C. 2,4; Bacc. Ch. 2;
Mixed Ch. 3,4; Band 1,2,3;
Cheerleader 3,4; Pep C. 3;
Booster C. 3,4; Scholarship
2; Class Play 3; Sigma Tau
Phi 4; Library C. 1,2; F.H.A.
3,4; V. Pres. 4; G.A.A. 1,2,
3,4; Queen Att. 1; News-
paper Staff 4

DONALD GROH
"Shortie"
Green High School 1,2

RONALD BUMGARDNER
"Beaver"
Class Play 3





K. Alexander



S. Armstrong



J. Bays



N. Bays
A. Bihl



A. Bowen
P. Bowman
S. Brady



C. Brown
W. Bussler
D. Burgess
E. Caldwell



M. Carter
J. Clark
J. Collingsworth
K. Cunningham
L. Cunningham



JUNIOR CLASS OFFICERS

Larry Cunningham, Marilyn Delabar, Jeanne Parsons,
Virginia Harner.

Juniors



G. Davis



M. Delabar



N. Eskridge



H. Flanagan



N. Floyd



J. Frank



P. Garrison



J. Gerlack



L. Gleim



I. Hale



J. Hall



H. Hammond



V. Harner



B. Harris



J. Hogan



F. Holsinger

J. Hoskins

K. Hunt

S. Hunt

B. Jones

C. Jenkins

D. Johnson



J. Jones



D. Lang



N. Lewis



R. Litteral



J. Lupe



S. McCarty



S. McGinn



M. Millhouse





N. Mingus

M. Morrison

F. Mullins

B. Nelson

H. Norris

G. Owens

J. Pace

J. Parsons



M. Pyle



D. Raike



R. Ray



B. Reed



J. Riggs



R. Ratliff



D. Staggs



B. Skiver

D. Sprouse

L. Spradlin

V. Staker

M. Townsend

J. Trout

G. Wagner



D. Warner



H. Welch



E. Williams



E. Williams



J. Williams



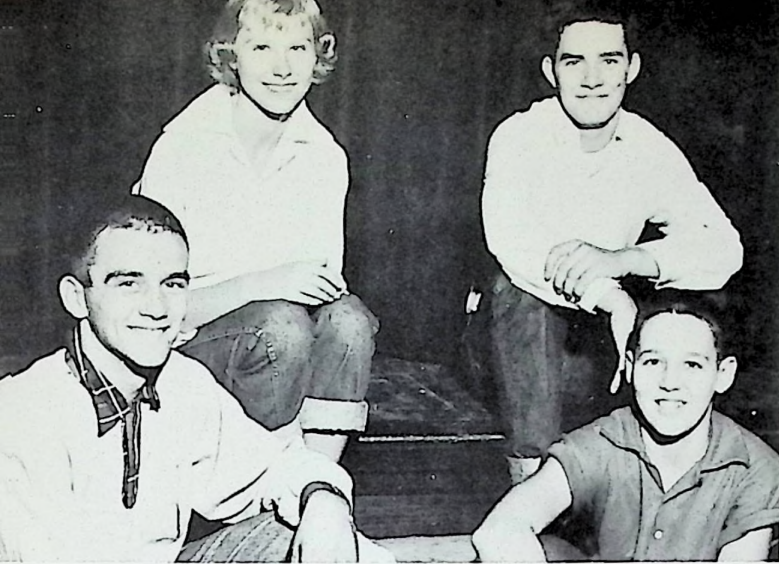
S. Williams



J. Willis



K. Wolfe



SOPHOMORE CLASS OFFICERS

D. DeCamp, S. Miller, Z. Fraley, V. Hall.



R. Adkins
A. Allen
L. Angell
B. Arthur
D. Bays
W. Belcher



J. Benford
F. Bihl
G. Bihl
J. Binion
B. Bowling
H. Burke



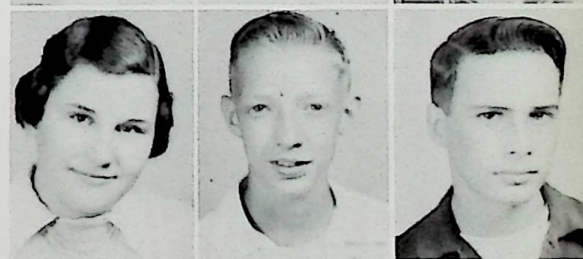
J. Caldwell
E. Cartee
J. Castle
C. Cliffe
P. Colegrove
M. Collins



L. Daniels
V. Davis
D. DeCamp
C. Dutiel
C. Eaton
H. Edmonds



C. Fannin
W. Fitch
Z. Fraley
P. Hacker
V. Hall
D. Henry

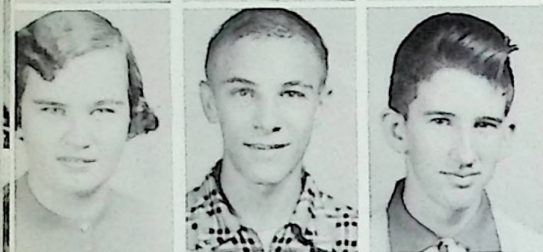




D. Henson
B. Holbrook
B. Hull
D. James
B. Jones
R. Justice



J. Kiser
A. Lang
J. Lemaster
B. Lewis
D. Lewis
E. Litz



L. Mault
H. McGahan
F. Merrill
S. Miller
P. Mitchell
R. Money



R. Morgan
R. Morrison
D. Moyer
D. Musick
E. Meyers
M. Newsome



G. Nickell
G. Norris
M. Ockerman
B. Percell
S. Perkins
J. Raike



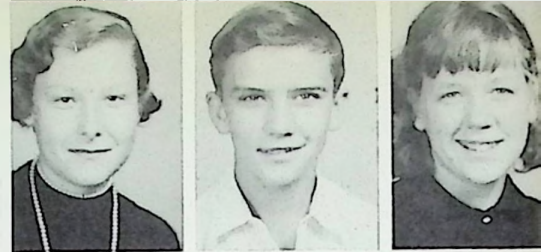
L. Rice
B. Robertson
C. Rogers
R. Roof
R. Simones
G. Sexton

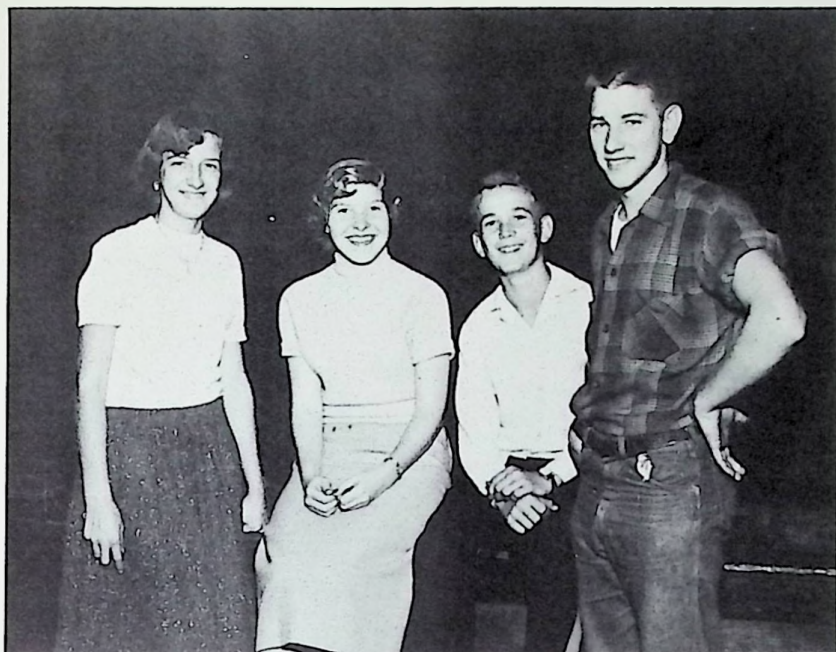


B. Sizemore
C. Smith
C. Staker
L. Stanley
G. Taylor
S. Trout



M. Turner
J. Wampler
G. Williams
M. Williams
W. Mullins
G. Skaggs





CLASS OFFICERS

Larry Erwin-President; Emma Call-Vice President; Raymond Hacker-Secretary; Shirley Parsons-Treasurer.



I. Adkins
E. Armes
M. Bailey
J. Baisden



C. Bays
C. Bobcook
S. Bond
M. Boots
B. Bowman

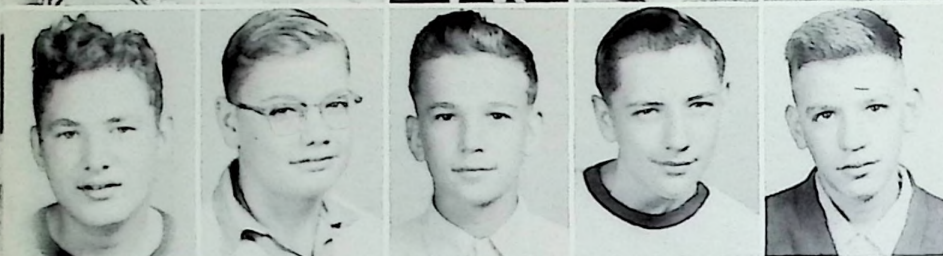


J. Braden
C. Brisker
D. Burgess
E. Call
L. Call

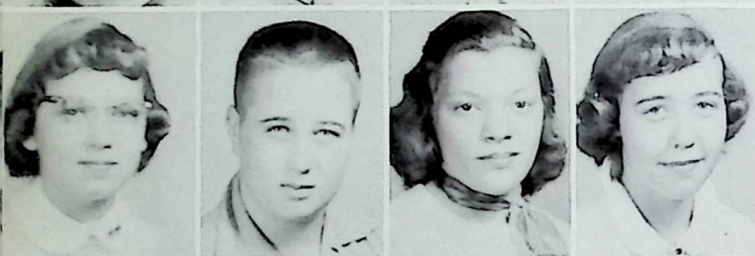




R. Cooper
A. Corriel
S. Craft
L. Culver
P. Dalton



J. Day
G. Evans
L. Erwin
C. Frasure
B. Gerlach



J. Gleim
D. Gose
L. Grant
B. Griggs



A. Haney
L. Harris
L. Hinds
R. Howland



R. Ishmael
H. Jordan
J. Leach
C. Lewis



D. Lewis
B. Linkous
K. Lyons
P. Maple



G. Marion
G. Martin
D. McDowell
M. Mershon

P. Morrison
W. Mullins
P. Musick
J. Osborne



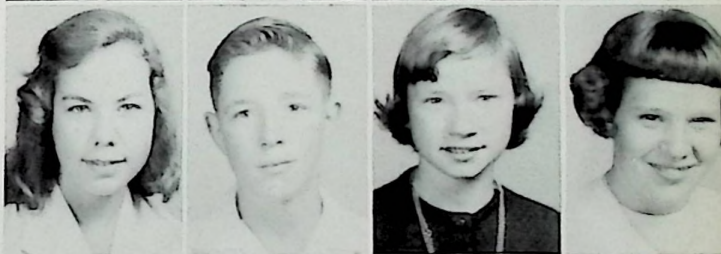
W. Parker
C. Payne
P. Price
B. Raike



E. Raike
J. Rase
H. Ratliff
A. Richmond



M. Richmond
F. Ruth
B. Savage
M. Shonkwiler



R. Snook
P. Sparks
J. Jaylor
F. Wagner



J. Wente
L. Wicker
B. Williams
E. Williams
C. Willis



J. Wilson
D. Wolfe
D. Young
M. Young
C. Stamper





**MISS SKIVER, AND
HER FAMOUS SMILE.**



LOOKS LIKE A GOOD GAME!





Row 1: S. Hoskins, G. Boggs, J. Lewis, S. Morrison, D. Allard, L. Holman, M. Miller, P. Parker, F. McGahan. Row 2: G. Cheek, J. Lawson, M. Gleim, J. Blackburn, C. Bihl, A. Brown, C. Warner, E. Grant. Row 3: P. Jacobs, L. Perkins, B. Neal, H. Danes, R. Hall, C. Johnson, M. Hall, D. Caldwell. Row 4: J. Keevil, R. Call, D. Fraley, J. See, J. Leach, M. Loper, J. Harper, F. Morris.

The Eighth Grade

Row 1: R. Hatten, K. Chamberlin, P. Eaton, C. Randall, C. Carter, R. Carter, C. Morrison, B. Binion, D. Fraley. Row 2: H. Harrell, N. Riggs, H. Shover, D. Compliment, E. Bays, D. Dempsey, E. Triplett, J. Danner, B. McNeeley, L. Ramey. Row 3: S. Johnson, R. Craycraft, K. Kiser, J. Nickell, L. Billups, B. Mathers, S. Moore, P. Coldiron, C. Marion, M. Miller. Row 4: J. Barth, H. Morris, C. Erwin, N. Maple, I. Adkins, J. Ward, R. DeCamp, R. Delabar, L. Witten, J. Lang, P. Bocok. Row 5: P. Adams, G. Erwin, V. Eubank, R. Huffman, B. Logan, G. Allard, R. Miller, D. Cunningham, B. Beasley, H. Cooley, R. Heeren. Not pictured: B. Keeney, H. Burgess.


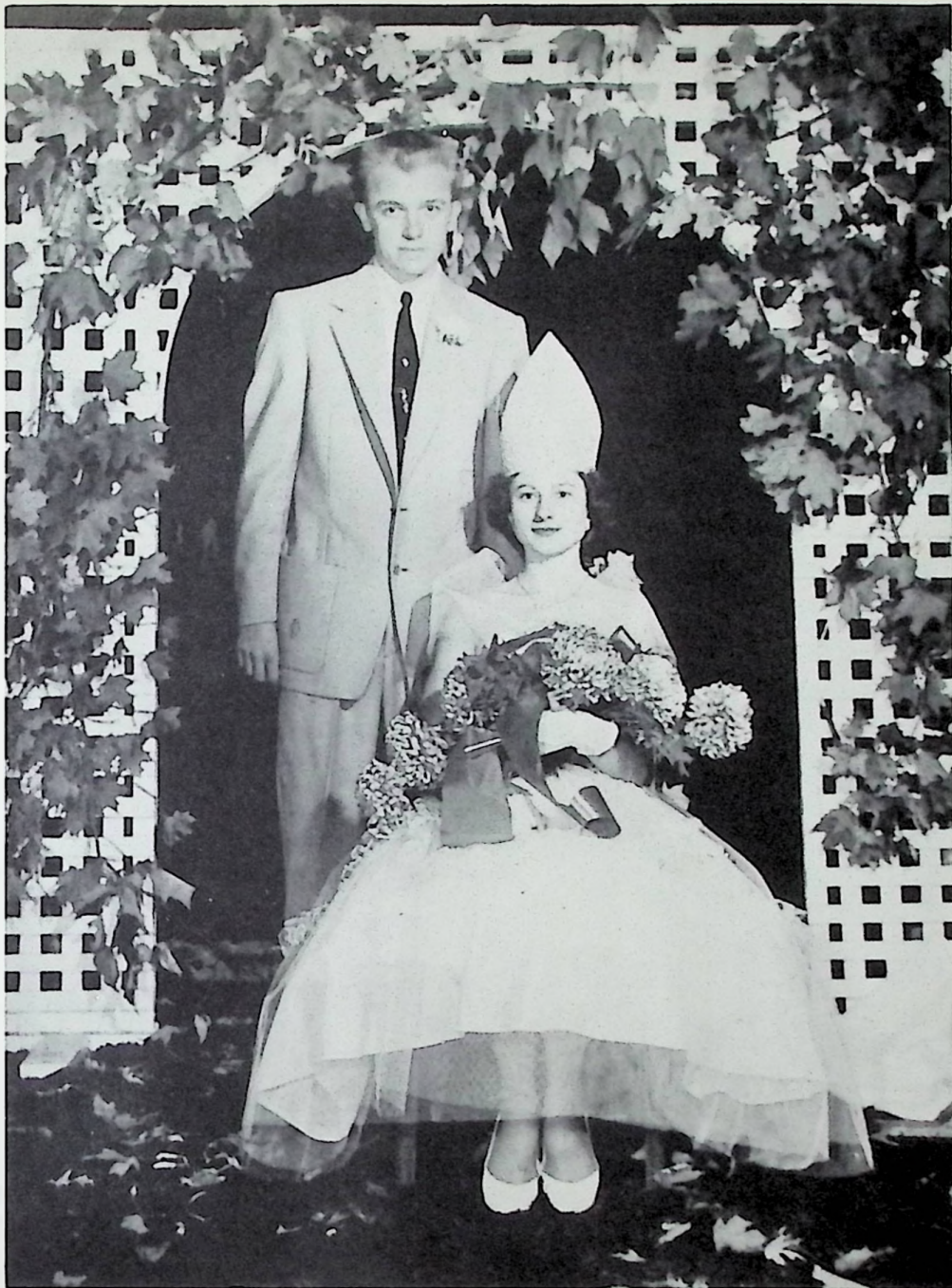




Row 1: Adkins, Abbott, Arthur, Ball, Burgess, Boyle, Beebe, Barry, Binion, Boyer. Row 2: Baisden, Bihl, Bihl, Brisker, Bihl, Burgess, Bowling, Benford, Call, Call. Row 3: Call, Cooper, Crabtree, Clark, Conley, Craig, Claxon, Chamberlin, Fraley, Guin. Row 4: Gritzi, Gerlach, Gerlach, Griggs, Gleim, Gleim, Gleim, Harrell, Hoover, Harr. Row 5: Huffman, Hall, Hinds, Johnson, Jenkins, Johnson, Lucas, Lockhart, Linkous, Lewis. Row 6: Leake, Leibald, Meenach, McNeeley, Marshall, McWhorter, Manning, McCann, McQuay, Mault. Row 7: Mays, Evans, Mullins, Mucha, Hatten, Norris, Nelson, Ottwath, Ottney, Owen. Row 8: Parsley, Pollard, Pelfrey, Percell, Turner, Roach, Ramey, Raike, Reed, Russell, Salley, Smith, Stanley, Stevens, Sherman, Strickland, Spradlin, Snook, Stanley. Row 9: Stanley, Wheeler, Willis, Wolfe, Williams, Wilder, Wright.

Grade 7





Football Queen

QUEEN, MISS LUCY BOGGS

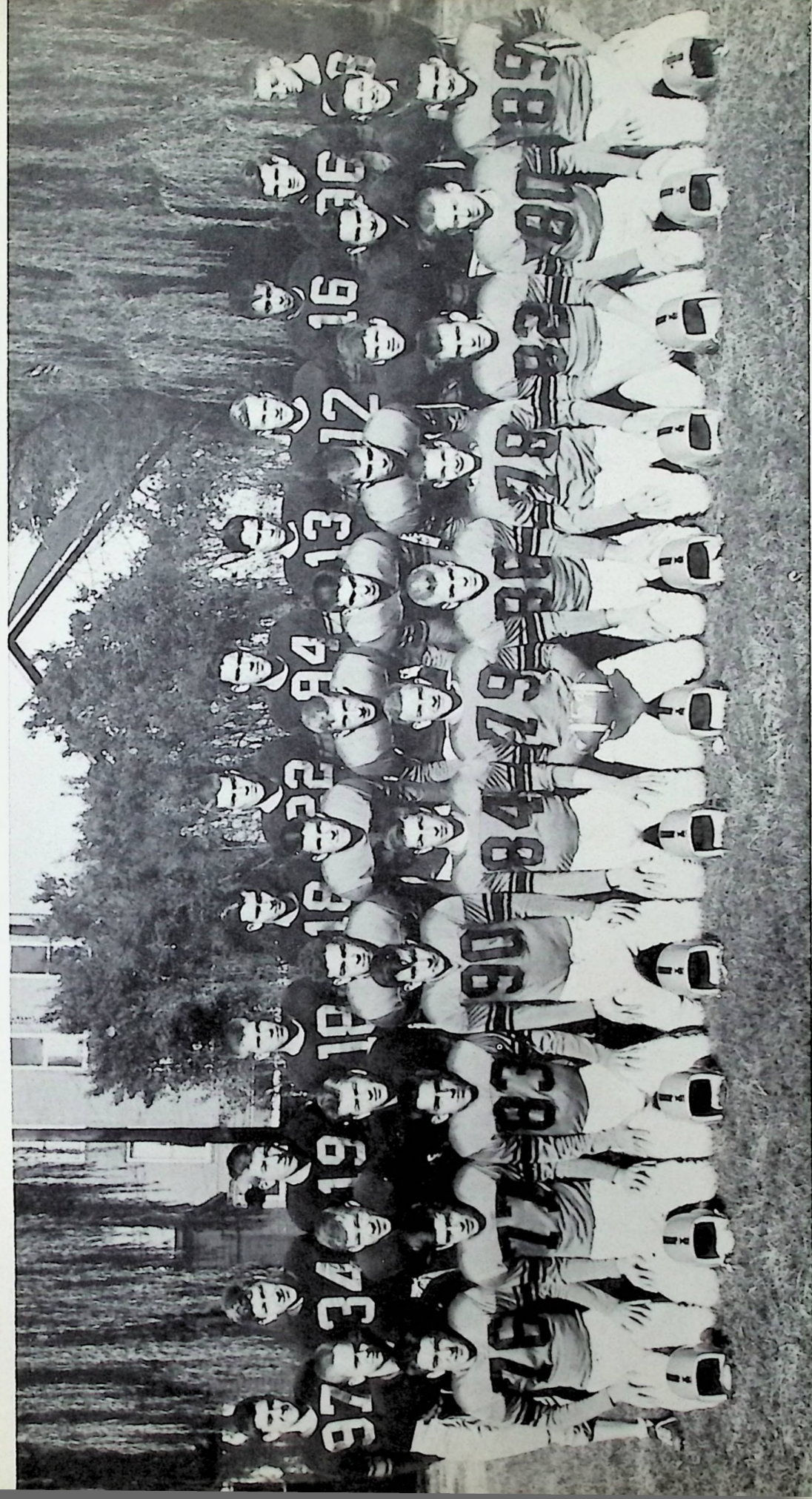
ESCORT, MR. DONALD HIBBITTS



Myrtle Madden
Senior Attendant

Jim Lemaster, Pat Mitchel, John Bailey, Myrtle Madden, Don Hibbitts,
Lucy Boggs, Larry Cunningham, Norma Eskridge, Fred Justice. Home-
coming Attendant.





Football Team

Row 1: Dave Sprouse, Ron Johnson, Hershel Edmunds, Jerry Collingsworth, George Owens, Ron Morgan, Bob Green, Jim Hogan, Jim Brown, Charley Rice, Don DeCamp. Row 2: John Taylor, Raleigh Haney, Don Warner, Donald McDowell, Bill Boyer, Doug Burgess, Bob Litteral, Bill Miller, Burch Norris, Darrell Henson, Vaughn Hall. Row 3: Danny DeCamp, Bebe Benson, Bill Beasley, Frank Miller, Bob Ishmael, Wayne Bussler, Kelly Wolfe, Mike Newsome, Ron Gulker, Johnny Wilson, Jack Triplet, Lloyd Spradlin.



Cheerleaders

Beverly Beall, Margy Tilley, Sue Frick, Ann Cramer, Ruth Willard.

Mr. Don Groh, Coach; Doug Smith, Manager;
Mr. Andy Hopkins, Coach.



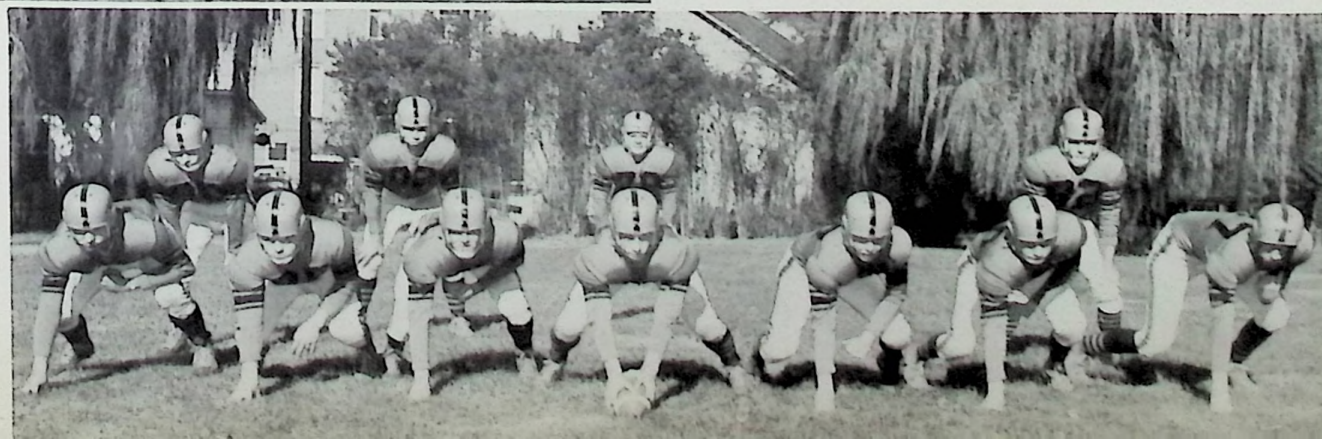
Cheerleaders

Jo Ann Hunt, Darlene Mauk, Eileen Delabar,
Vivian Lawson, Colleen Fraley.





Row 1: Stanley Hoskins, George Cheek, Junior Fraley, David Boyer, Bob Skiver, Managers. Row 2: George Taylor, Darrell Henson, Mike Newsome, Ron Gulker, Raliegth Haney, James Binion, Vaughn Hall.





Library Club

Row 1: Shirley Armstrong, Larry Angell, Lucy Boggs, Barbara James, Mary Alice Gleim, Barbara Nelson, Connie Bussler, Joan Hunt, Vaughn Hall. Row 2: Mary Moore, Cecelia Tolbert, Ruth Willard, Virginia Dodd, Judy Frank, Ruth Mcquay, Virginia Harner, Vicki Staker, Dart Mauk, Sharon Bowen, Garnett Ruggles, Mrs. Harrison, sponsor. Row 3: Mr. Colegrove, Sue Williams, Marilyn Delabar, Ann Cramer, Shelby Spradlin, Hershel Burke, Wanda Wilson, Sue Frick, Nancy Bays, Janet Williams. Row 4: Don Maggard, Lane Daniels, John Snook, Eileen Delabar, Philip Colegrove. Row 5: John Bailey, Eugene Caldwell, Robert Harner, Paul Porter.

Astronomy Club

Row 1: Richard Howland, Larry Angell, Jo Ann Barth, Vicki Staker, Vivian Lawson, Ann Bihl, John Lupe, Ralph Money. Row 2: Jacob See, Philip Colegrove, Lane Daniels, John Snook, Jacob Gerlach, Alan Bowen, Gary Norris, Robert Harner, Frank Merrill, Hershel Burke, Mr. Colegrove, sponsor.





Sigma Tau Pi

Row 1: Jo Ann Hunt, Shelby Spradlin, Connie Bussler, Elaine Sparks. Row 2: Miss Shepard, sponsor. Row 3: Colleen Fraley, Ceil Tolbert, Ruth Willard, Virginia Dodd, Vivian Lawson, Darlene Mauk, Ann Cramer, Eileen Delabar, Sue Frick, Margy Tilley, Ruth Haney, Beverly Beall, Elizabeth Massie, Garnett Ruggles, Lucy Boggs, Fay Evans.

G. A. A.

Row 1: Judy Hoskins, Beverly Hull, Colleen Fraley, Connie Bussler, Helen Ratliff, Shirley Brady, Ann Bihl, Hannah Flannagan, Lucy Boggs, Donna Jo Moyer, Elaine Sparks. Row 2: Shirley Miller, Carol Smith, Gladys Sexton, Beverly Beall, Vivian Lawson, Sandra McCarty, Elizabeth Massie, Darlene Mauk, Ruth Willard, Vicki Staker, Bonnie Harris, Mrs. Burkhart. Row 3: Gloria Gallion, Sue Williams, Julia Riggs, Marilyn Delabar, Larna Mault, Helen Hammonds, Ann Cramer, Janet Williams, Nancy Bays, Juanita Massie. Row 4: Jeanne Parsons, Helen Welch, Wanda Wilson, Ruth Haney, Patty Mitchel, Sue Frick. Row 5: Phyllis Morrison, Mary Ann Morrison, Eileen Delabar, Shelby Spradlin.





Glee Club

Row 1: Judy Hoskins, Ethyl Williams, Mary Ann Shonkwiler, Barbara Percell, Rosemary Simones, Betty Sizemore, Willa Belcher, Elaine Sparks, Ann Bihl, Pat Garrison, Shirley Trout, Bonnie Harris, Pat Ishmael, Jo Ann Hunt, Shirley Brady, Helen Ratliff, Faye Evans. Row 2: Connie Bussler, Donna Moyer, Darlene Mauk, Ruth Willard, Lizabeth Massie, Charlotte Rogers, Joyce Wampler, Diana Wolf, Phyllis Sparks, Margy Tilley, Pat Mitchell. Julia Riggs, Beverly Beall, Velma Hoskins, Vivian Lawson, Beverly Hall, Miss Litteral, Director. Row 3: Lucy Boggs, Gloria Gallion, Nancy Bays, Virginia Dodd, Shirley Horton, Wanda Wilson, Phyllis Morrison, Mary Ann Morrison, Vicki Staker, Margaret Bailey, Diane Lang, Estel Williams, Eileen Delabar, Shelby Spradlin, Shirley Bond.



ACCOMPANISTS

Standing: Donna Jo Moyer, Ann Bihl. Seated: Lizabeth Massie, Pat Mitchel.





Mixed Chorus

Row 1: Barbara Percell, Ann Bihl, Charlotte Rogers, Ruth Ann Willard, Darlene Mauk, Lizabeth Massie, Wanda Wilson, Anna Cramer, Eileen Delabar, Pat Mitchell, Myrtle Carter, Julia Riggs, Vivian Lawson, Beverly Beall, Colleen Fraley, Helen Ratliff, Miss Litteral. Row 2: Fred Bihl, Hershel Burke, Mike Newsome, John Bailey, Jacob Gerlach, Howard Salyers, Joe Fleshman, Don Groh, Dave Skaggs, Alan Bowen, Ron Morgan, Larry Cunningham, Albert Lang.



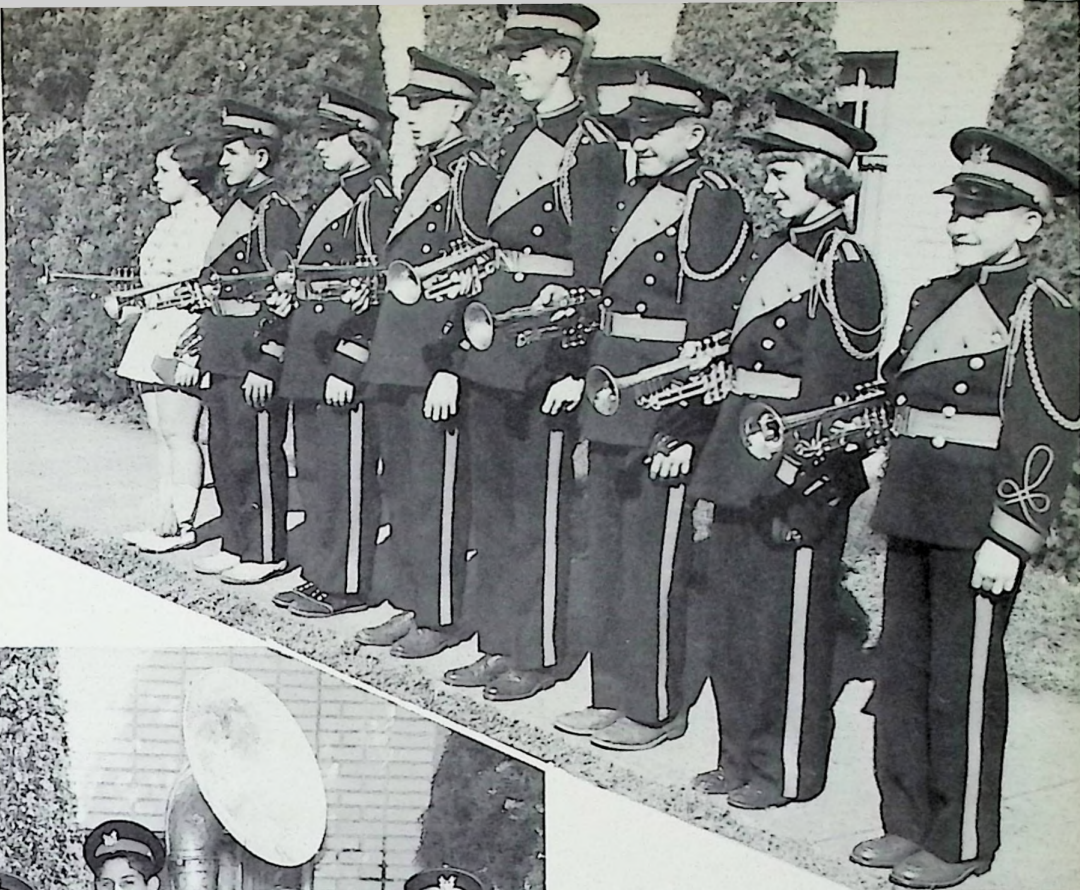


The Wheelersburg High School Band

Row 1: Carolyn McHenry, Linda Holman, Charlotte Sutton, Shirley Miller. Row 2: Jeanne Parsons, Gladys Sexton, Carol Smith, Patty Dalton, Barbara Johnson. Row 3: Louise Grant, Mary Alice Gleim, Ada Brown, Linda Witten, Janet Castle. Row 4: Joyce Gleim, Morris Young, Phillip Colegrove, Neil Mingus, George Cheek, Bob Linkus, Donna Jo Moyer, Elaine Sparks. Row 5: Mary Ann Morrison, Carolyn Warner, Shelby Spradlin, Barbara Edmunds, Sharon Bowen, Christine Bihl, Loren Gleim, Larry Ervin, Jim Wente, Richard Howland, Jacob Gerlach, Bob Litz, Jerry Jones. Row 6: Elizabeth Massie, David Bays, Jim Hogan, Gary Claxon, Dorris Young, Mr. Taylor, Director, Alan Bowen, Bill Raikie, Roger Cooper.

Band Sections

Trumpets: Elaine Sparks, Bob Linkous, Joyce Gleim, Phillip Colegrove, Neil Mingus, Morris Young, Donna Jo Moyer, George Cheek.



Percussion: David Bays, Alan Bowen, Dorris Young, Roger Cooper, Gary Claxon. Bells: Elizabeth Massie.

Saxophones and Clarinets: Carolyn Warner, Carolyn McHenry, Charlotte Sutton, Sharon Bowen, Mary Ann Morrison, Shelby Spradlin, Shirley Miller, Linda Holman, Barbara Edmunds.





Remember that Thanksgiving Meal? Yum!



And then we are soup.



Getting into practice?

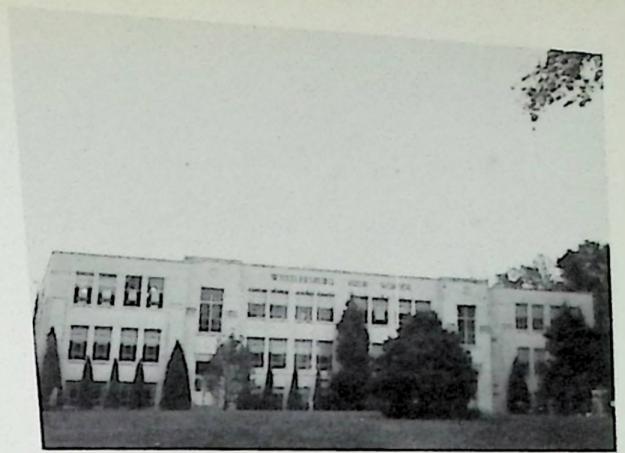


Do you read "The Heart of Juliet Jones," a comic strip in the TIMES? This is Stan Drake, the cartoonist who draws that strip. Our annual staff members, who attended the Ohio University publications workshop in Athens last July, obtained this picture of Mr. Drake. He gave one of the major lectures at the workshop, illustrating his talk with sketches of his comic strip characters.





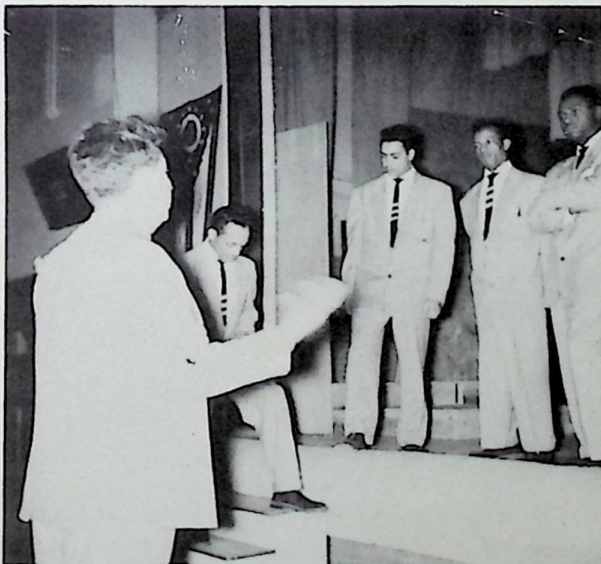
Dale and his Coon



The Work House



Dear old "39"



Come on, Boys! Sing!



Sure looks like Dinah.



Kampus Kapers Staff

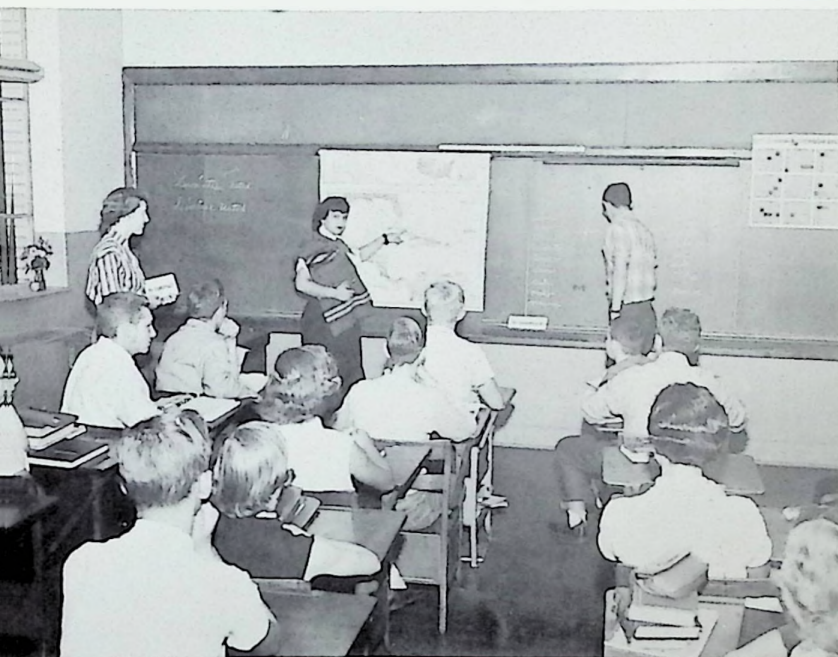
Row 1: Lucy Boggs, Connie Bussler, Shelby Spradlin, Margy Tilley, Virginia Dodd, Row 2: Beverly Beall, Darlene Mauk, Colleen Fraley, Elaine Sparks, Ruth Haney. Row 3: Jo Ann Hunt, Fay Evans, Lib Massie, Ruth Willard, Vivian Lawson, Ann Cramer, Sue Frick, Eileen Delabar, Cecelia Tolbert, Garnett Ruggles.

Future Homemakers of America

Row 1: Beverley Beall, Jo Ann Hunt, Helen Hammond, Anna Cramer, Eileen Delabar, Juanita Massie, Darlene Mauk, Vivian Lawson, Lucy Boggs. Row 2: Mary Ann Boots, Ida Hale, Kay Mershon, LaVerne Wicker, Barbara Edmunds, Judy Hoskins, Pat Garrison, Elaine Sparks, Donna James, Ethel Williams, Carol Triplett. Row 3: Mary Shonkwiler, Hannah Flannagan, Bonnie Harris, Jane Bays, Nancy Lewis, Virginia Dodd, Cecelia Tolbert, Larna Mault, Emma Call, Helen Ratliff, Mrs. Schindler, Adviser. Row 4: Emma Meyers, Shirley Bradey, Barbara Holbrook, Betty Griggs, Ann Haney, Barbara Johnson, Louise Rice, Dianne Lang, Estell Williams, Ruth Willard, Colleen Fraley. Row 5: Garnett Ruggles, Betty Sizemore, Carolyn Duteil, Carol Fannin, Marilyn Delabar, Charlotte Rogers, Alice Faye Allen, Shelby Perkins, Janet Castle, Wanda Mullins, Elizabeth Massie. Row 6: Norma Eskridge, Judy Franck, Jeanne Benford, Joyce Wampler, Sandra McCarty, Evelyn Raika, Gwen Williams, Judy Raika, Ruth Call, Dale Henry, Connie Bussler. Row 7: Carolyn Willis, Joyce Gleim, Sue Frick, Shelby Spradlin, Wanda Wilson, Gladys Sexton, Julia Riggs, Nancy Bays, Georgia Davis, Marcella Pyle, Ruth Haney, Patty Morrison.



Some Fish Pond



Los Alumnos De Espanol
Spanish Class

Southland Singers At Christmas



Substitute in Action

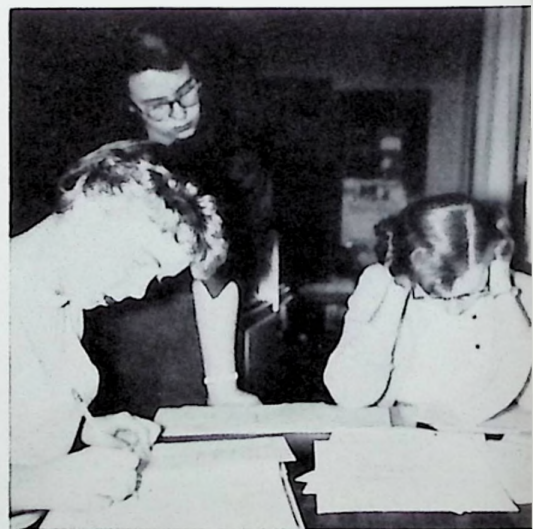




Row 1: Shirley Miller, Vicki Staker, Ruth Haney, Ceil Tolbert, Colleen Fraley. Row 2: Miss Thompson, Barbara Percell, Eileen Delabar, Shelby Spradlin, Garnett Ruggles. Row 3: Pete Lyons, Russell Ottney, Dave Skaggs, Neil Mingus.

Annual Staff

THIS is an artist???????



Yearbook Sales Contest Winners

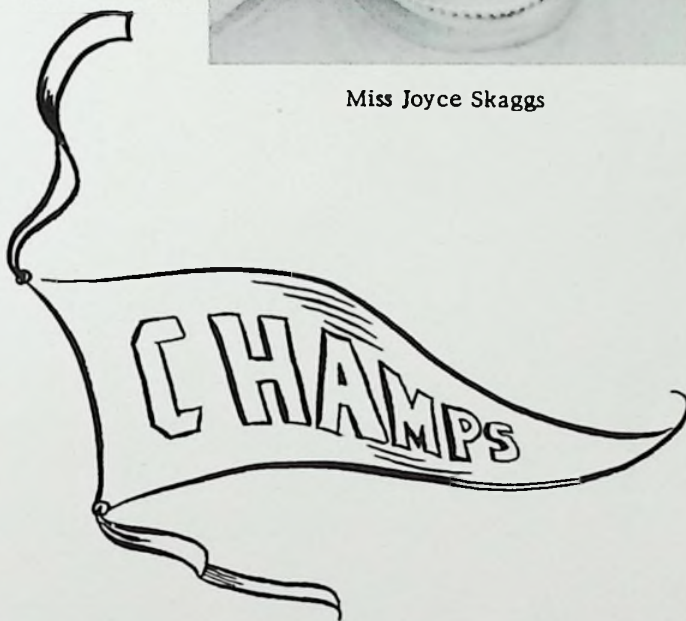
These two girls led all the other eighth grade students in selling the top number of subscriptions to the '55 WHEEL. We of the annual staff wish to thank each student who helped sell this year's book.



Miss Frances Wessell



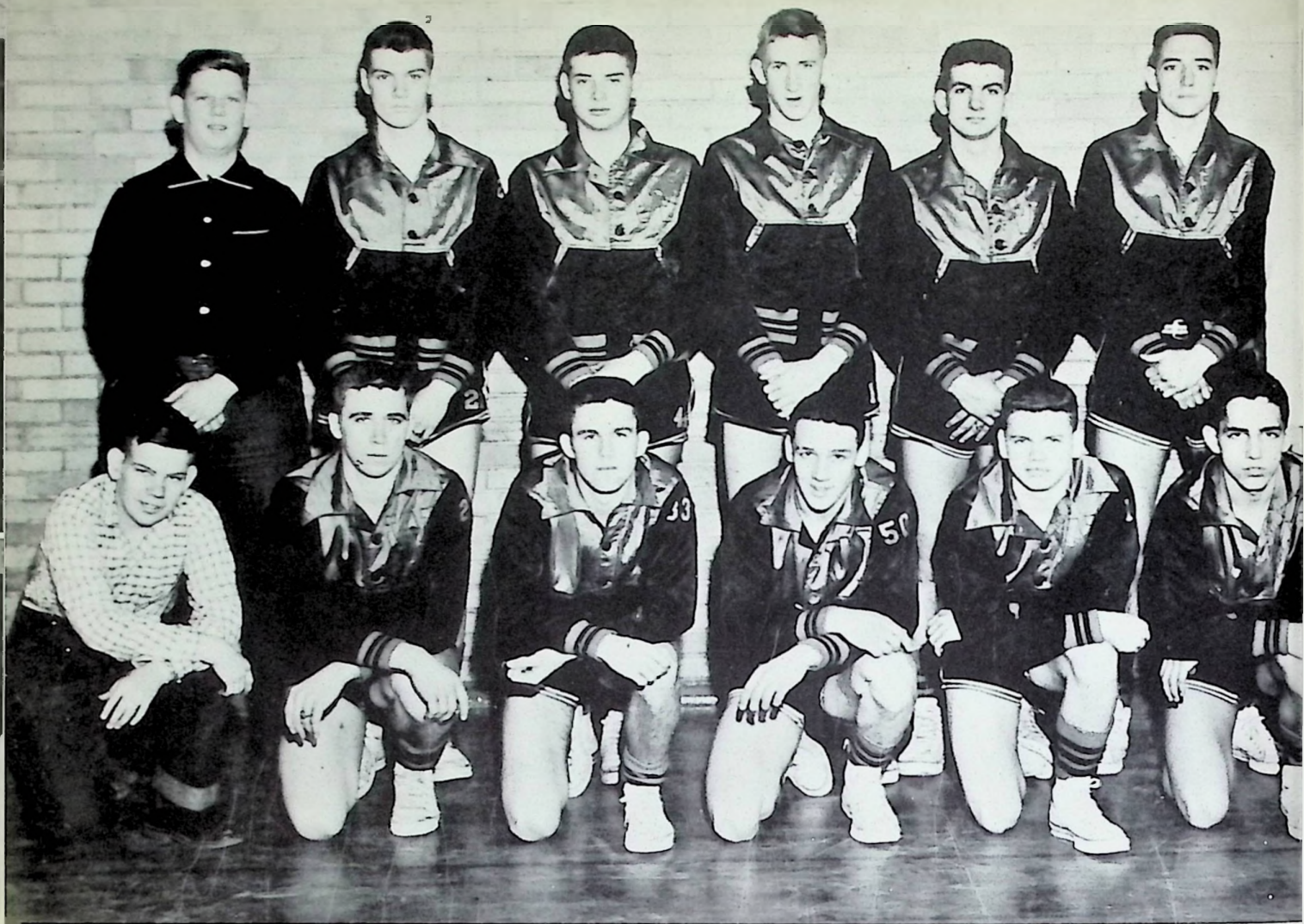
Miss Joyce Skaggs



They just love to sing!



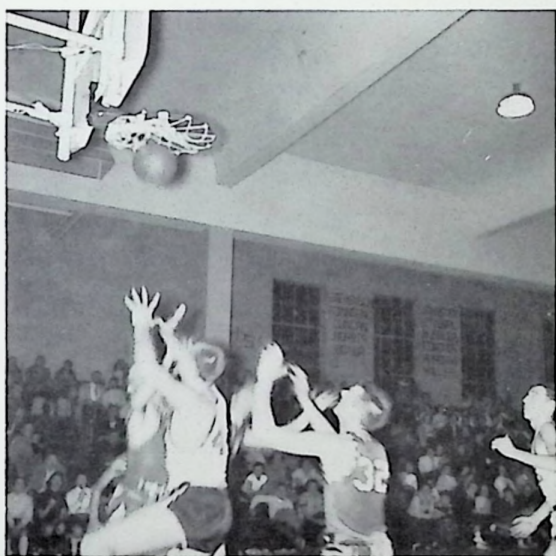
"The First Noel, . . ."



Basketball Pirates

Row 1: Bob Skiver, Manager, Bill Miller, Bill Boyer, Max Townsend, Gary Norris, Herschel Edmunds. Row 2: Douglas Smith, Wayne Bussler, Ronald Stephenson, Douglas Burgess, Bob Litteral, Ronald Duncan, Mr. Estepp, Coach.





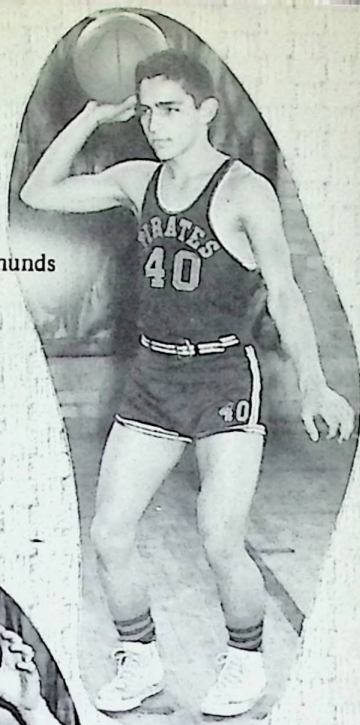


Coach Estep

Stephenson



Edmunds



Litteral



Estep's Boys

Duncan



Burgess



Miller



Boyer



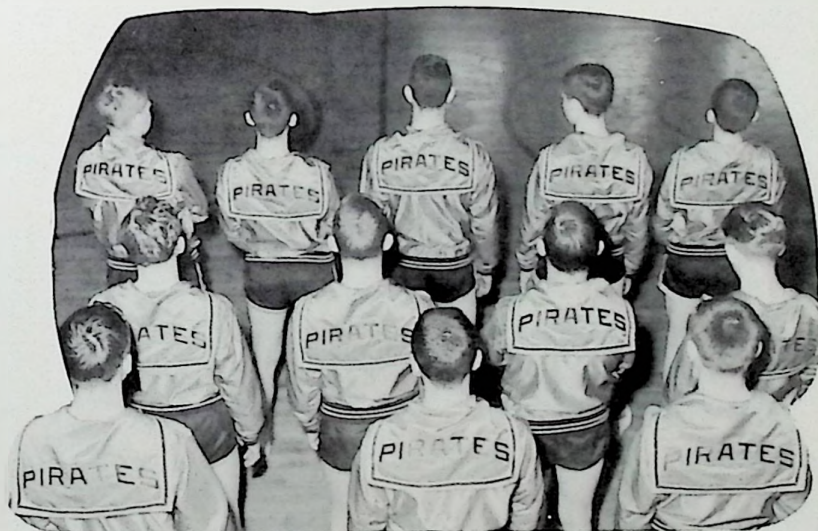


Reserve Basketball Team

Mr. Groh, Coach, Don DeCamp, Ray Hacker, Frank Miller, Paul Maple, Jim Lemaster, Ron Morgan, Garry Norris, Danny DeCamp, Roger Cooper, John Wilson, Herschel Burke, Frank Merrill.

Look this way, Boys!

Compliments to the Seniors
DUDUIT & JOHNSON
National Homes



Best wishes from
SCHINDELL'S JEWELRY STORE

Compliments of
WINDEL HOWLAND FUNERAL HOME

Compliments to Class of '55 from
THE PORTSMOUTH BOTTLING CO.

Best wishes to the Graduates,
VERNAL RIFFE

Junior High Cheerleaders



Row 1: Janice Lawson, Becky DeCamp, Laoma Perkins. Row 2: Karen Chamberlain, Lana Billups.

Junior High Basketball



Row 1: Mr. Miller, Coach, Jacob See, George Cheek, Bob Huffman, Stanley Hoskins, Bill Beasley. Row 2: Gary Boggs, James Leach, Jhan Aeh, Bruce Logan, Dale Compliment, Joe Bihl. Row 3: Bernard McNeeley, John Danver, Ronald Cummins, Branyon Guin, Larry Abbott, Roger Call. Row 4: Jim Keevil, Jim Huffman, Tommy Leake, Bill Bihl.

JUNIOR
HIGH
BASKETBALL TEAM



Music Theory Class

Typing Class





**Pop and Cliff's
Restaurant**

**Fine Foods
Courteous Service**

Scott Duncan, Mgr.

*Compliments
of*

Ralph Lang

Compliments of

**West End
Electric Co.**

*Compliments
of*

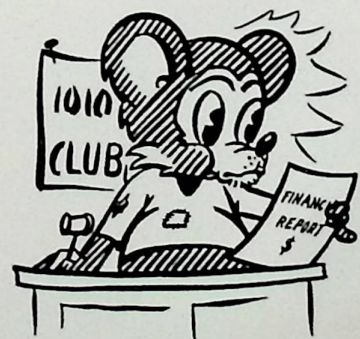
Hibbitts Hardware

*Compliments
of*

**Mucha's Shell
Service Station**

Scioto

Ohio





It runs in the family??
???



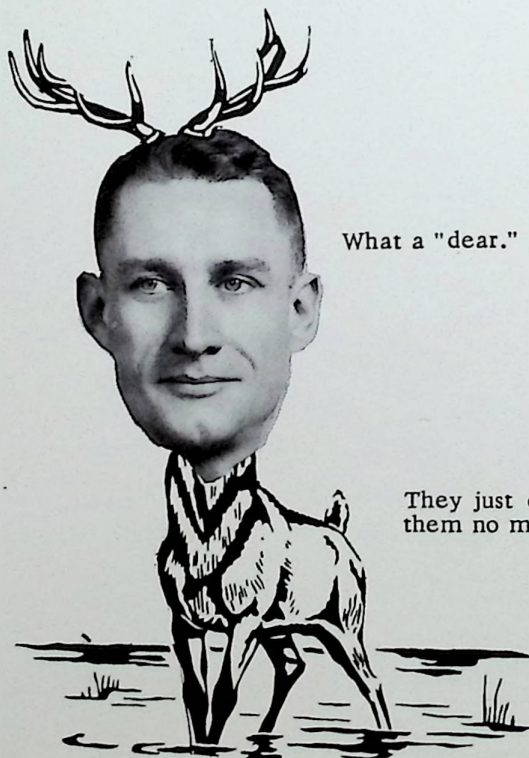
Teacher's pet



YE GODS!!!! MAC-
BETH???

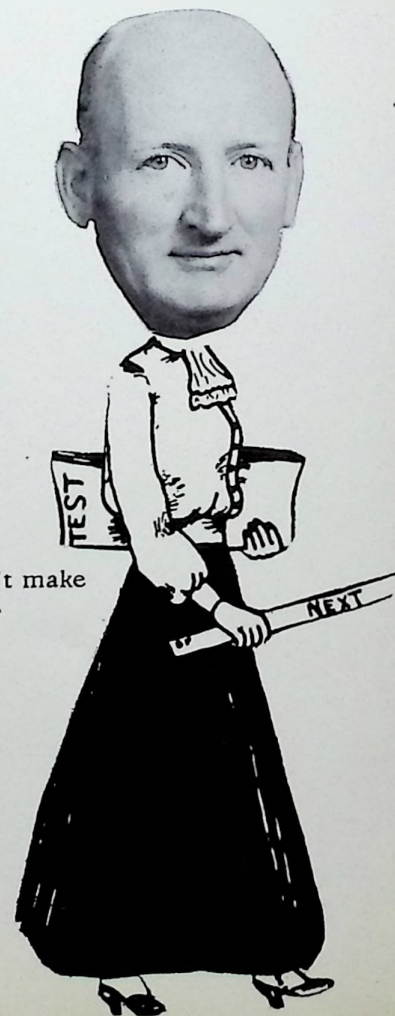


I thought he was a
science teacher.



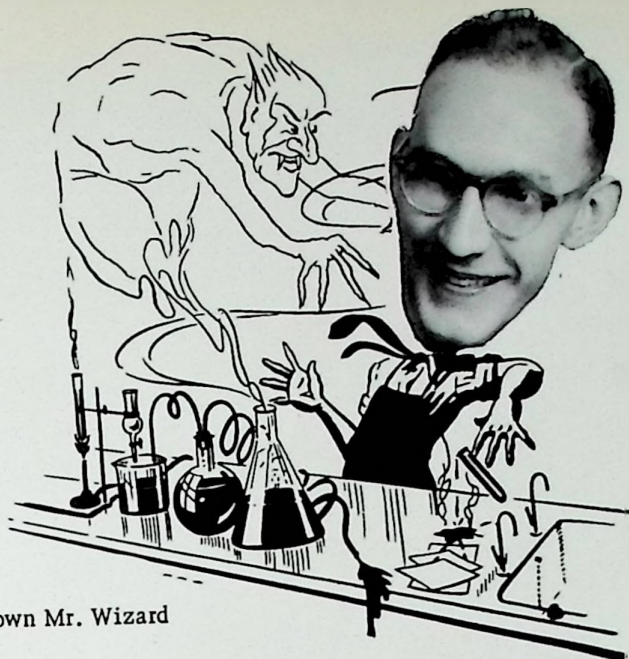
What a "dear."

They just don't make
them no more.





Go, Man Go!!!!!!



Our own Mr. Wizard

A stitch in time saves
nine



W. H. S. Olympic
Champ



Well; I'll be a Dirty
Bird!!!



Real gone cat!!



CLASS OF 1955

Detroit Steel Corporation extends hearty congratulations to this year's graduates upon completion of another step in the process of preparing yourselves to become useful citizens in your community.

Your career after graduation will develop in a nation whose progress is a direct result of its freedoms, so that you will have an opportunity to grow and to develop in a land of opportunity.

The future will offer many additional opportunities for continued study and improvement. We urge all graduates to pursue all opportunities to further increase their knowledge in order to stay abreast of our rapidly expanding technology in a highly technical world. More than ever it can be said for the future that "knowledge is power."

DETROIT STEEL CORPORATION

PORTSMOUTH DIVISION

PORTSMOUTH, OHIO



Latin Club

Row 1: Barbara Percell, Donna Jo Moyer, Vaugh Hall, Richard Howland, Patty Dalton, Beverly Hull, Linda Harris. Row 2: Charlotte Sutton, Shirley Miller, Barbara James, Sue Williams, Shirley Horton, Barbara Nelson, Margaret Bailey, Louise Grant, Carol Smith, Mrs. Harrison. Row 3: Shirley Armstrong, Ann Bihl, Vicki Staker, Beluah Williams, Marilyn Delabar, Virginia Harner, Constance Cliffe, Ceil Tolbert, Janice Lemon. Row 4: Bonnie Parsons, Albert Lang, Philip Colegrove, Hershel Burke, Pat Mitchell. Row 5: Alan Bowen, Jacob Gerlach, Robert Harner, John Snook.

School Boy Patrol

Row 1: Tom Burgess, Roger Hall, Jake See, Ed Bays.
Row 2: Mr. Boyd, Sponsor, Leland Brown, Ray Perkins, Bill Beasley, Bob Huffman.





THE PORTSMOUTH PAINT COMPANY

928 Gallia Street

Portsmouth

Ohio

SCIOTO VALLEY PRODUCE CO.

Fruits and Vegetables

1002-4 Chillicothe St. — P.O. Box 1048

Portsmouth

Ohio

KRESGE

400 Chillicothe Street

Portsmouth

Ohio

COCA COLA

3001 Scioto Trail

Portsmouth

Ohio

STEWART'S DRUG STORE

904 Gallia

Portsmouth

Ohio

FITCH'S USED CARS

4114 Gallia St.

New Boston

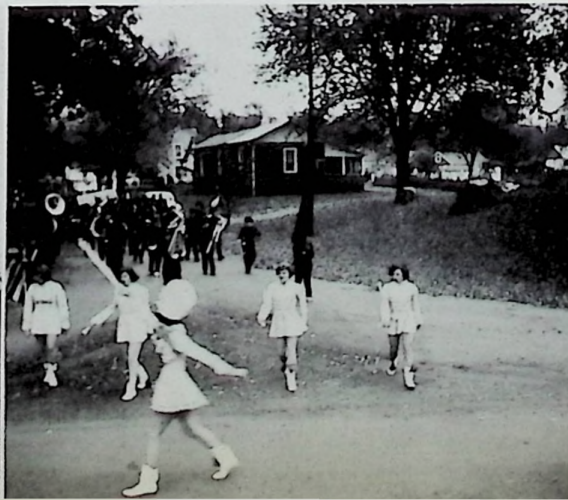
Ohio

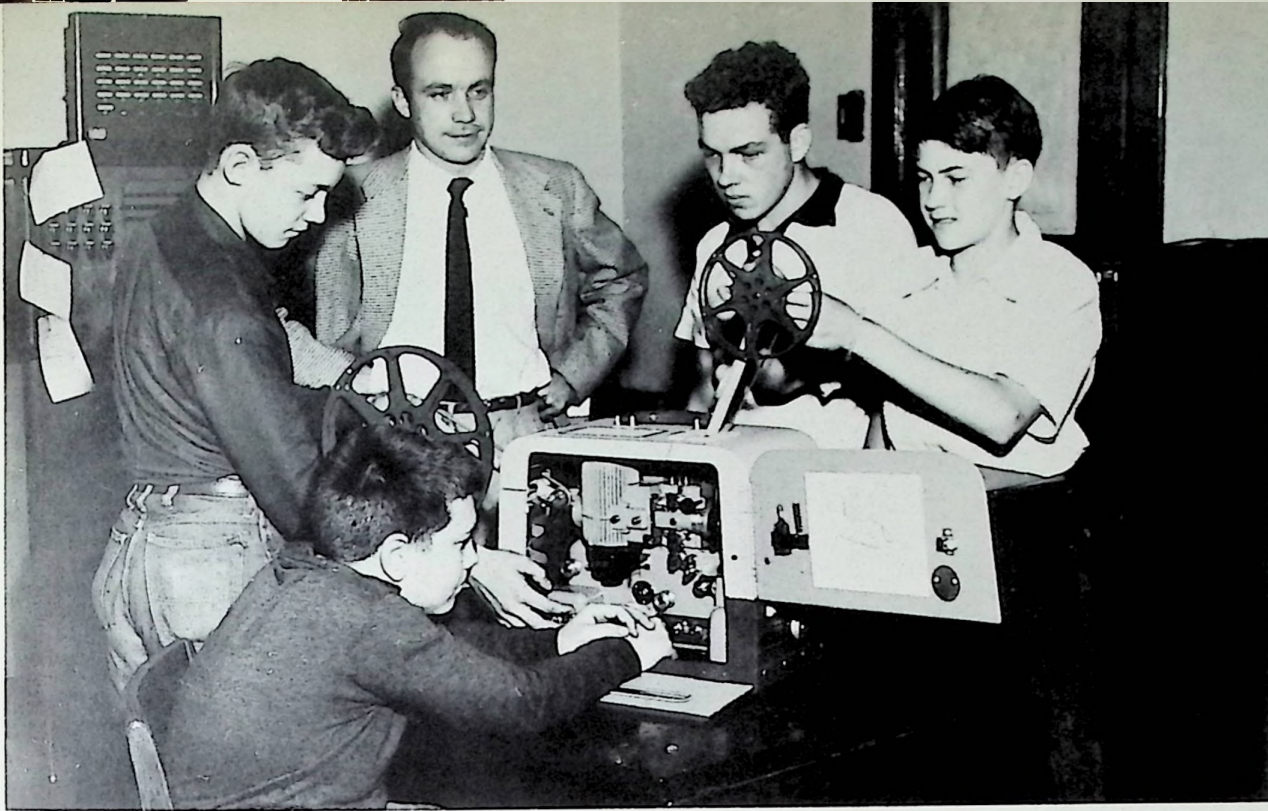
WALKER SHOE STORE

420 Chillicothe Street

Portsmouth

Ohio





GILL FUNERAL HOME

Oxygen Equipment
Ambulance Service

Phone - 100

Sciotoville



Wealth . . .
Happiness . . .
Success . . .
to the Class of '55
from -

Marting's

HERFF-JONES CO.

1407 - 1419 North Capitol Ave.
Indianapolis 7, Ind.

McCARTY FOOD MARKET

Choice Home Killed Meats
Phone 233-G Free Delivery

BORDEN'S

237 Second Street
Portsmouth, Ohio

CLOCKNER CHEVROLET

Portsmouth, Ohio
Phone 2-1761

For the best used cars in town
see **PAULEY'S** Auto Sales

Compliments of

VERNAL G. RIFFE

New Boston, Ohio

Leo Blackburn, President

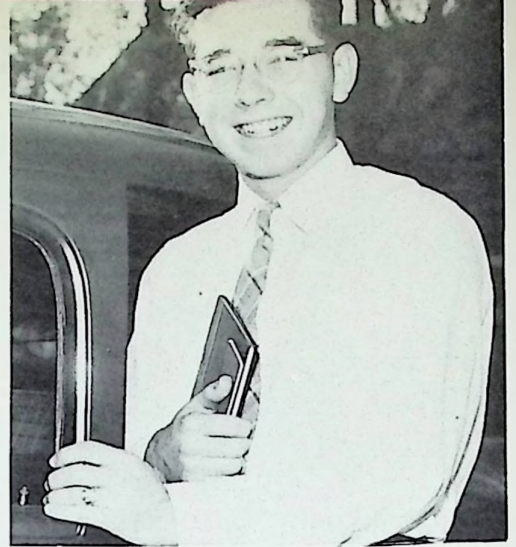
PORTSMOUTH INTERSTATE BUSINESS COLLEGE

Portsmouth, Ohio

CAMEO RESTAURANT

839 Gallia Street
Portsmouth, Ohio

Dr. Kelso - Ruggles Department,
Kelso Drug Store - Lehman Insurance Co.
Earl Mingus - Ketter's Electric Shop
Wheelersburg T. V. - Sales and Service
Kopy Kat Inc. - Ralph Legler
Tailor - Tilene's
A Friend





OHIO ASPHALT PAVING CORP.

823 Prospect Street
Portsmouth, Ohio

KOCH HARDWARE

8081 Gallia Phone 968-L
Wheelersburg, Ohio

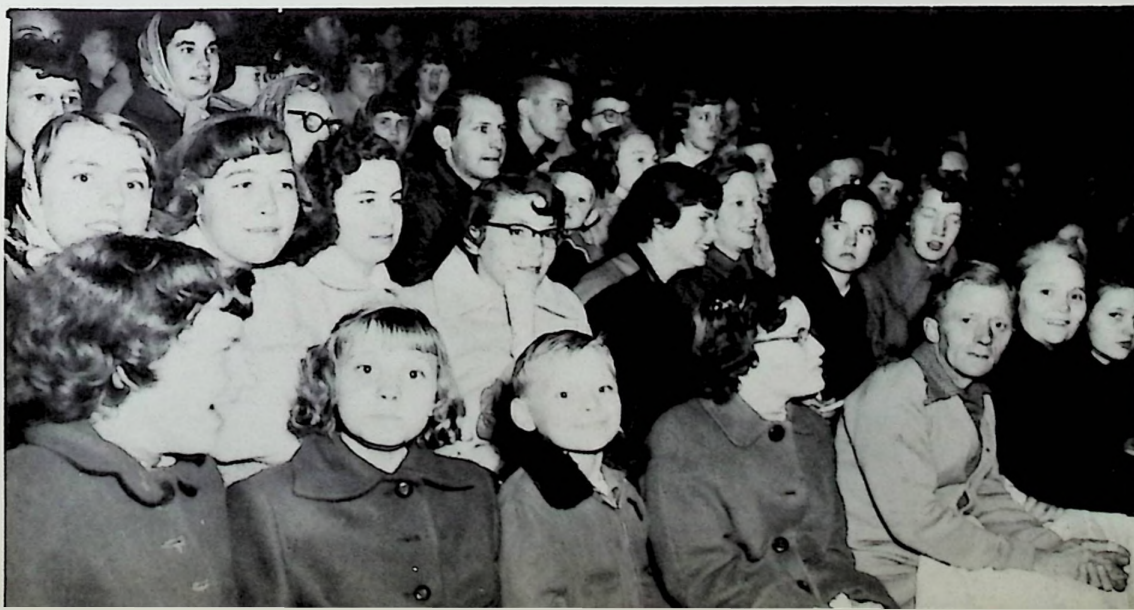
*Best Wishes to the
Class of 1955*

REIDENBACH PHARMACY

Masonic Temple
Wheelersburg, Ohio

C. M. DONALDSON ASSOCIATION

National Bank Building
Portsmouth, Ohio





DETROIT STEEL CORPORATION

Portsmouth Division

Portsmouth

Ohio





SAND SPORTING GOODS

"Everything for the Sportsman"
822 Sixth Street

Eat with your friends at the
TURKEY SHOPPE RESTAURANT

WILLIAMS' BAKERY
Home Baked Pastries

Wheelersburg

SEARS, ROEBUCK AND CO.
301 Chillicothe St.

J. W. STIR CO.
516 Second St.

Portsmouth

ZIMMERMAN'S INC.
Office Supplies and Equipment
810 Chillicothe St.

DISTEL FURNITURE CO.
616 Chillicothe St.

Portsmouth

LESLIE M. RAMEY FEED STORE
Flour, meal, feed, grinding and mixing
Phone S-233-L

Ohio

O.

O.





CALLIHAN BODY SHOP

1205 Findlay Street
Portsmouth, Ohio

DONALD AND DILLION

Insurance Agency
202 Masonic Building

AMERICAN SAVINGS AND LOAN ASSOCIATION

503 Chillicothe Street
Portsmouth, Ohio

FLOOD DRUGS INC.

2109 11th Street
Portsmouth, Ohio

Expert Prescription Service

ROBERT E. WILLIS

General Insurance
Phone Sc 116-L Wheelersburg

HOSKINS MARKET

Home Killed Meats
Refrigerated Vegetables

HENRY OBERLING MOTOR COMPANY

922 - 26 Gallia St.
Portsmouth, Ohio

THE STANDARD SUPPLY CO.

1004 - 1012 Findlay St.
Portsmouth, O.



MILLHUFF'S

500 Harding Ave.
Sciotoville, Ohio

GRAFF LUMBER CO.

6467 Bahner Road
Sciotoville, Ohio

HIBBITTS DEPARTMENT STORE

Wheelersville, Ohio
Phone 981-R

MORGAN BROS. JEWELERS

734 Fifth Street
Portsmouth, Ohio

STAPLETON OFFICE SUPPLY CO.

Stationers - Office Outfitters
Portsmouth, Ohio

WINDEL-HOWLAND FUNERAL HOME

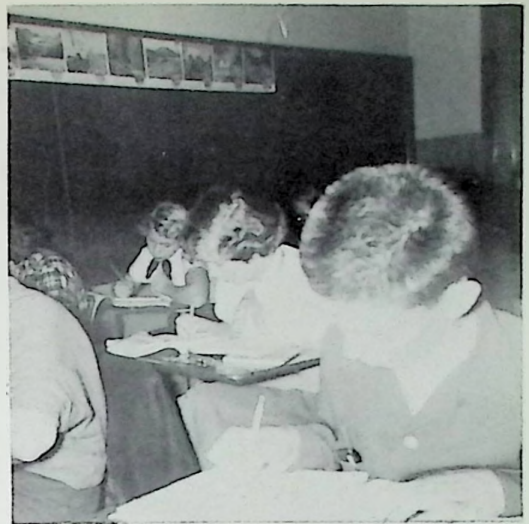
1503 Offner
Portsmouth, Ohio

ZOLLNER JEWELRY CO. INC.

1857 Chillicothe St.
Portsmouth, Ohio

KAY JEWELERS

817 Gallia St.
Portsmouth, O.





HARRISON FUNERAL HOME

Wheelersburg
Scioto 270
Ambulance - Oxygen Equipment

DUVENDECK'S PAINT STORE

5619 Gallia Street
Sciotoville Ohio

WHEELERSBURG BEAUTY SHOP

Catherine Darlington
Manager
Phone 966-R

Compliments of

ROCKWELL FLORAL SHOP

Wheelersburg O.

Compliments of

VIC STAKER

Auto Body Shop

E. B. STIDON'S GROCERY

New Highway Wheelersburg

SHELA AND YORK TURKEY FARM

Sciotoale O.

HENRY BUSSLER

Ashland Products
Wheelersburg O.

BOURGHOLTZER DRUGS STORE

Sciotoville
Nyal - Prescriptions

LEET LUMBER CO.

Sciotoville
Phone Scioto 5-334

SCHULER JEWELRY

Theater Building

Sciotoville

Ohio

CAROLINA LUMBER CO.

1011 Lincoln

Portsmouth

Ohio

PORTSMOUTH INTERSTATE BUSINESS COLLEGE

815 Gallia St.

CUNNINGHAM'S HARDWARE

519 - 2nd Street
Portsmouth
Hotpoint Appliances

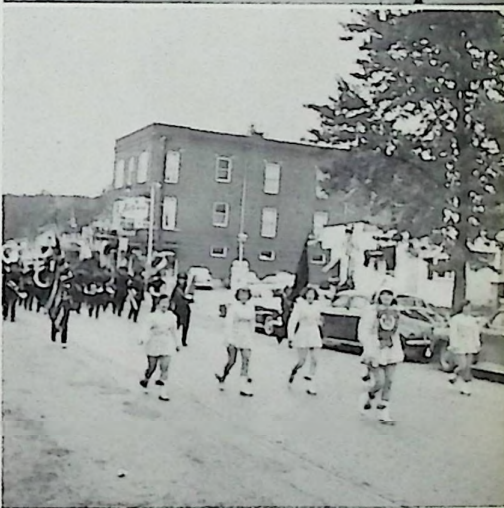
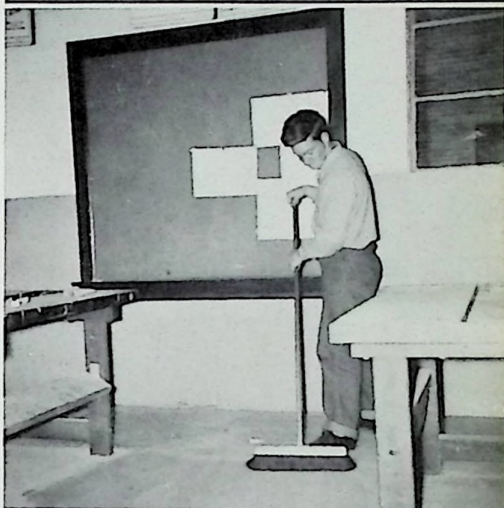
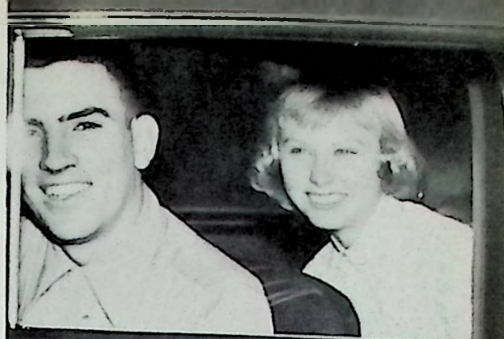
THE HIBBS HARDWARE CO.

Wholesale Hardware
Patronize your local dealer

WOLF'S CLOTHING

320 Gallia St.

Portsmouth





SCIOTO DRUGS

Sciotoville, O.
Harding Ave.

PENNEYS

315 Chillicothe Street
Portsmouth, O.

Compliments of

LITTERALS FOOD MARKET

Wheelersburg

CHRYSLER - PLYMOUTH

Sales & Service
Wheelersburg Motor Co.
Ph. S - 272





CHESTER C. CONKLIN & SON

Shell Distributor

2650 Gallia St. - Phone 2-0271

NEWBERRY BROTHERS

4132 Gallia
New Boston, Ohio

Best Wishes from

BURL E. JUSTICE

Sheriff of Scioto Co.

HOSKINS GROCERY

Wheelersburg, Ohio
Phone 982-R





MILDRED'S BEAUTY SHOP

Personality Haircuts
Permanent Waves \$5.00 to \$12.50

EVANS FLORAL SHOP

6804 Gallia St.

Scioto

Ohio

HORTON'S SELF SERV MARKET

Groceries - Meats - Vegetables
Good Sohio Gas and Oil

THE AUTOMOTIVE SUPPLY CO.

Scioto
Mobilgas - Mobiloil
General Tires

FIFTH STREET SHOE REPAIR

738 Fifth St.
Phone 9-3161

PHOENIX LUNCH PIES

1223 Offnere

Portsmouth

Ohio

BRAGDONS

Portsmouth

O.

Compliments of

CARR'S JEWELRY STORE

811 Gallia St.





C. L. MELVIN CO.
Real Estate and Insurance

Wheelersburg

Ohio

OHIO THEATRE
New Boston

SECURITY CENTRAL NATIONAL BANK

Center St.

New Boston

Ohio

STAPLETON OFFICE SUPPLY CO.

829 6th

Portsmouth

Ohio

CRAWFORD COAL CO.

1006 Hutchins

Portsmouth

Ohio

MARKET STREET HARDWARE

217 Market Street

Portsmouth

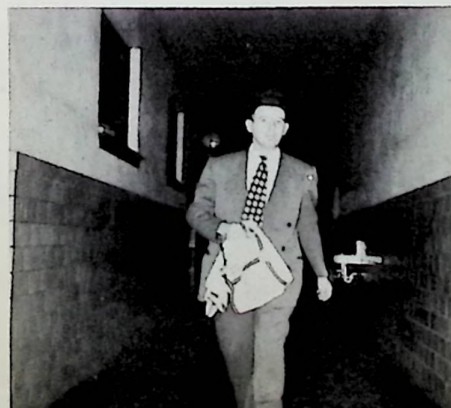
Ohio

GEMPERLINES FURNITURE CO.

612 2nd

COVERT

Furniture Co.
"Shop at Sciotoville"
and save
Phone Sc. 207





ADAMS BAKING CO.

1009 OFFNERE
PORTSMOUTH, OHIO

KOBAKERS

405 Chillicothe Street
Portsmouth, Ohio

THE ATLAS FASHION CO.

WHEELERSBURG COAL & FEED

Purina Chows
Seeds and Fertilizer
Phone S - 85



