

PANTHER '85





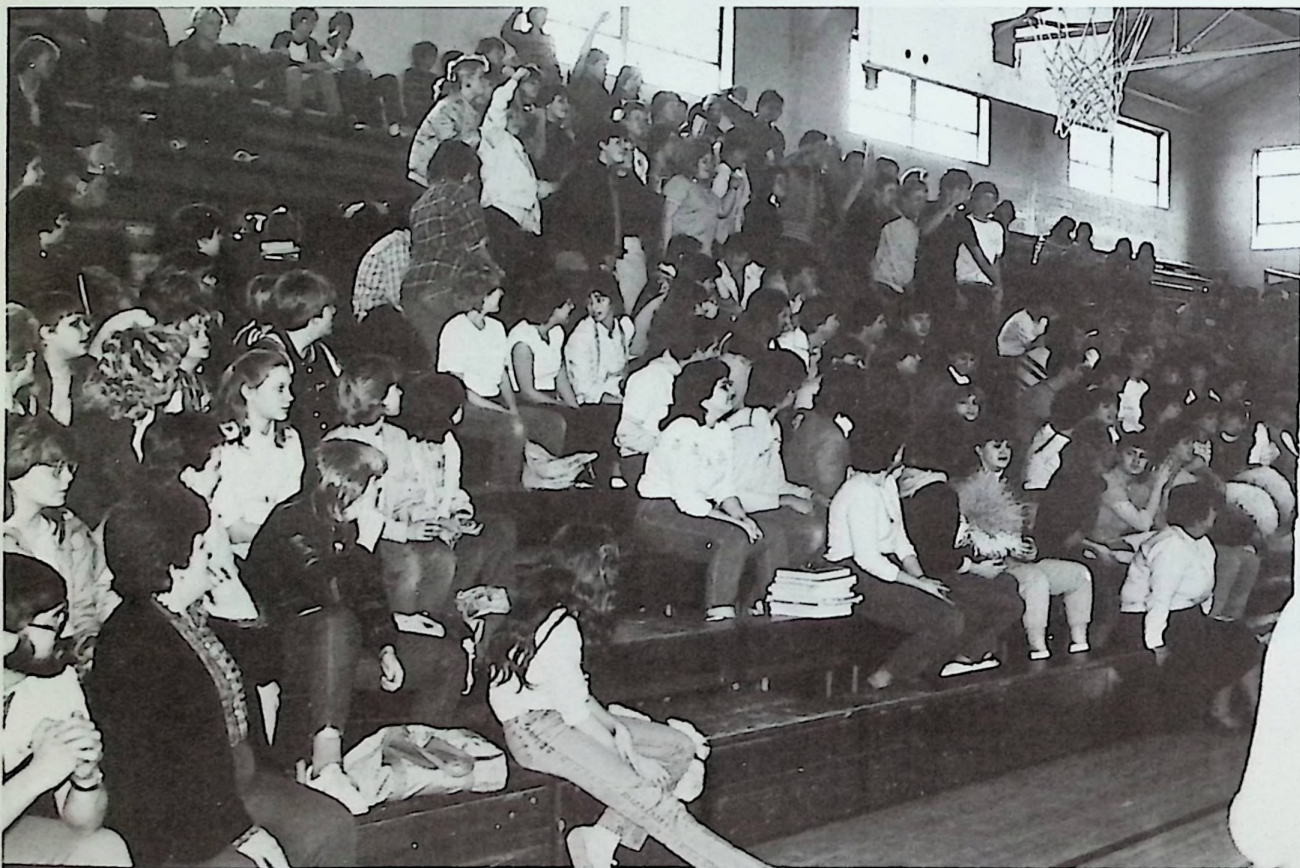
1985 PANTHER

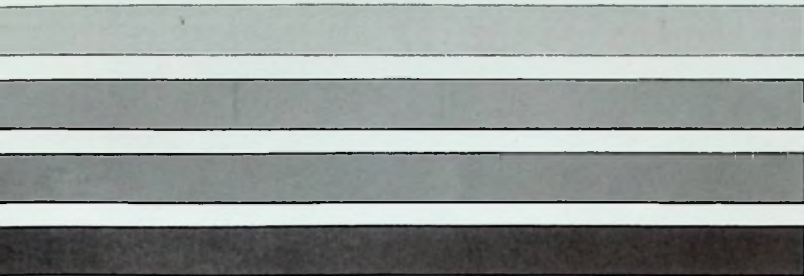
CLAY HIGH SCHOOL

Route 6
Portsmouth, Ohio



CONTENTS

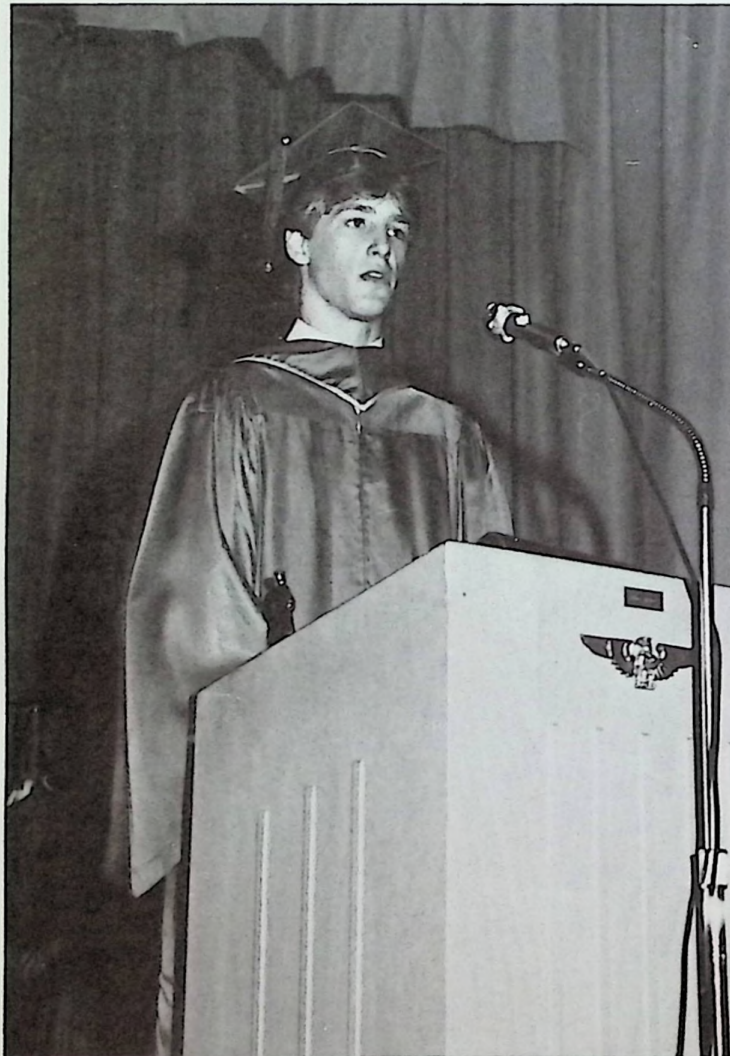




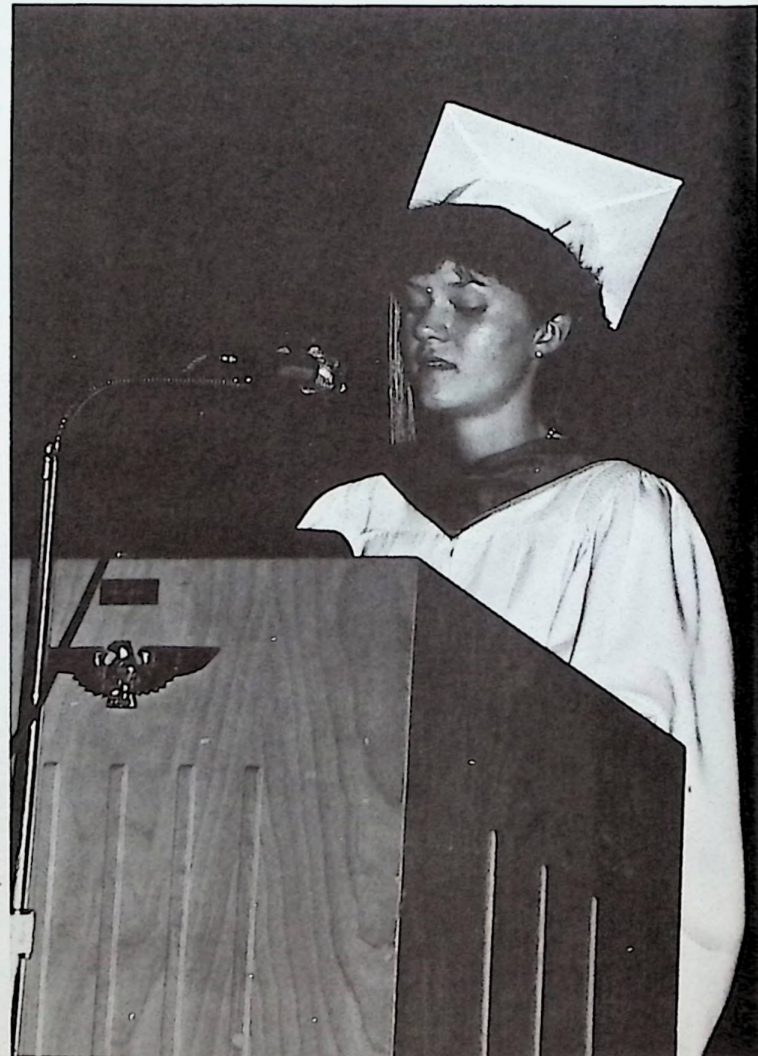
| | |
|----------------------------|-----|
| GRADUATION | 4 |
| RIVER DAYS | 8 |
| JUNIOR-SENIOR PROM | 10 |
| SADIE HAWKINS DANCE | 16 |
| YEARBOOK DANCE | 17 |
| HOMECOMING | 18 |
| SENIOR CLASS PLAY | 20 |
| SENIORS | 22 |
| JUNIORS | 32 |
| JUNIOR CLASS PLAY | 36 |
| SOPHOMORES | 38 |
| FRESHMEN - SOPHOMORE DANCE | 44 |
| FRESHMEN | 46 |
| FACULTY | 52 |
| ADMINISTRATION - STAFF | 54 |
| HONORS | 56 |
| JUMP FOR HEART | 62 |
| ORGANIZATIONS | 64 |
| SPORTS | 78 |
| JUNIOR HIGH | 96 |
| ADVERTISING | 113 |



Graduation Highlights



Ed Lynch - Salutatorian

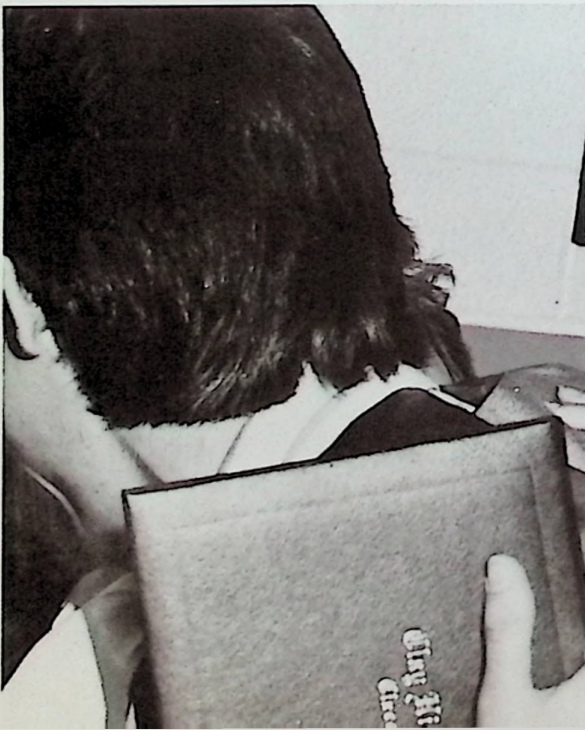
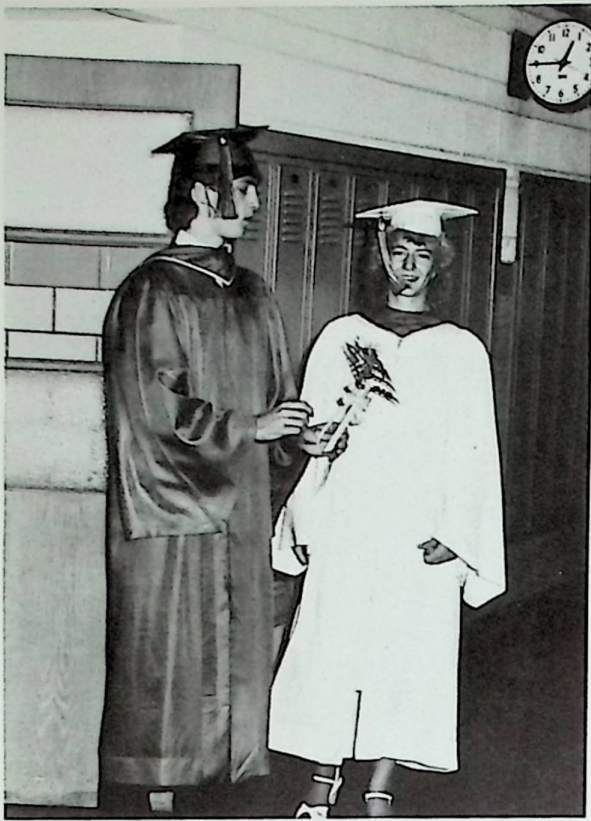


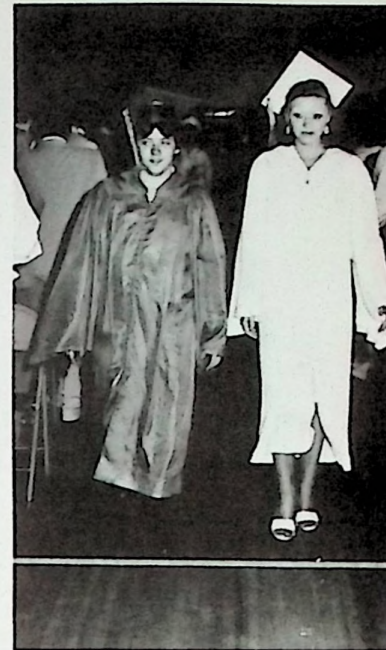
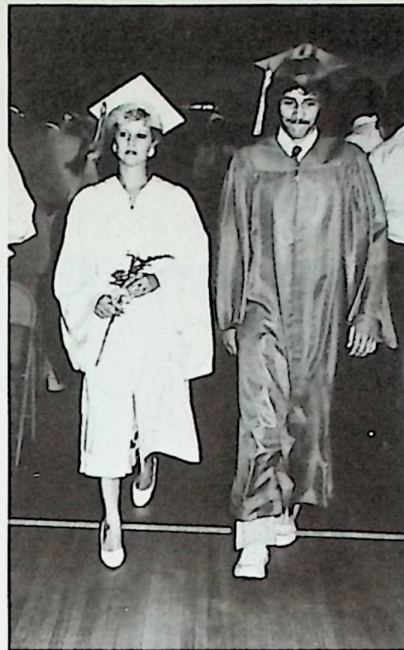
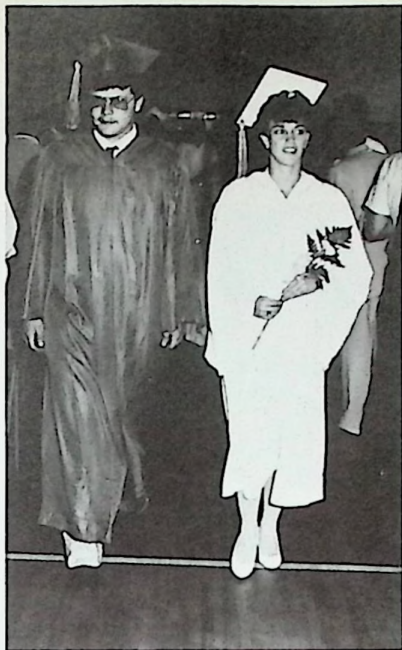
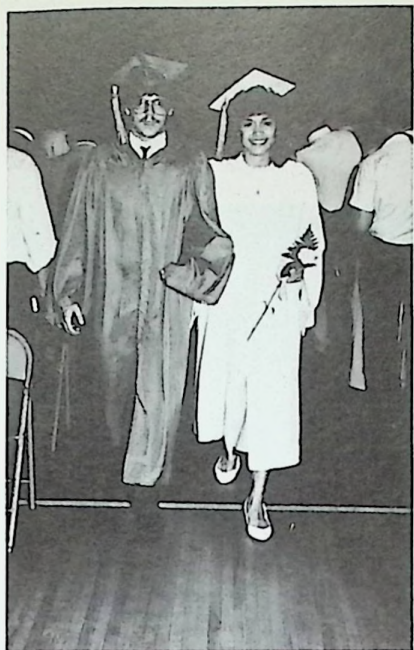
Lisa Leive - Valedictorian



Dr. Jeff Justus - Commencement Speaker



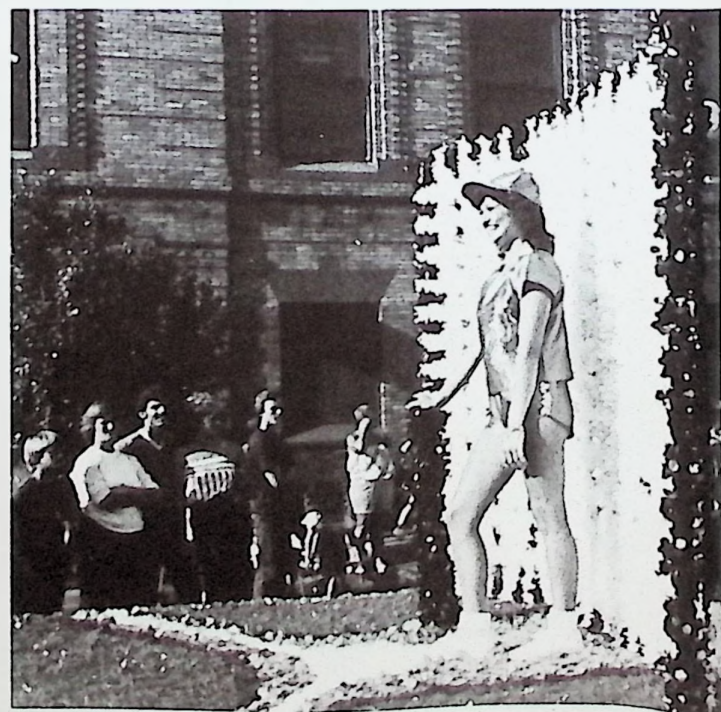
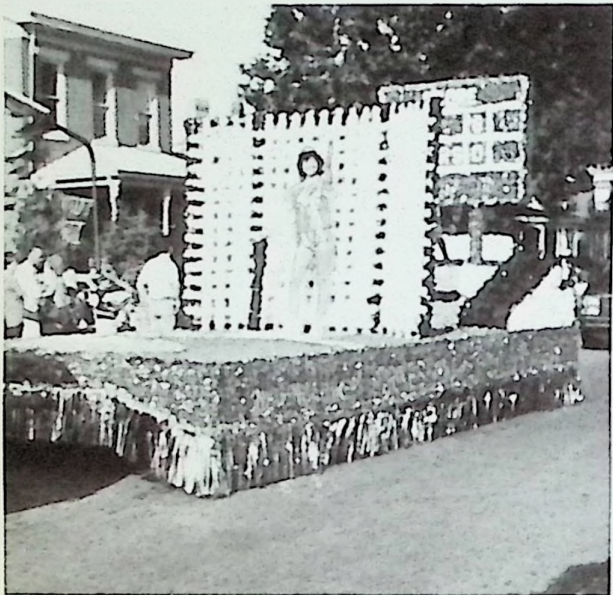
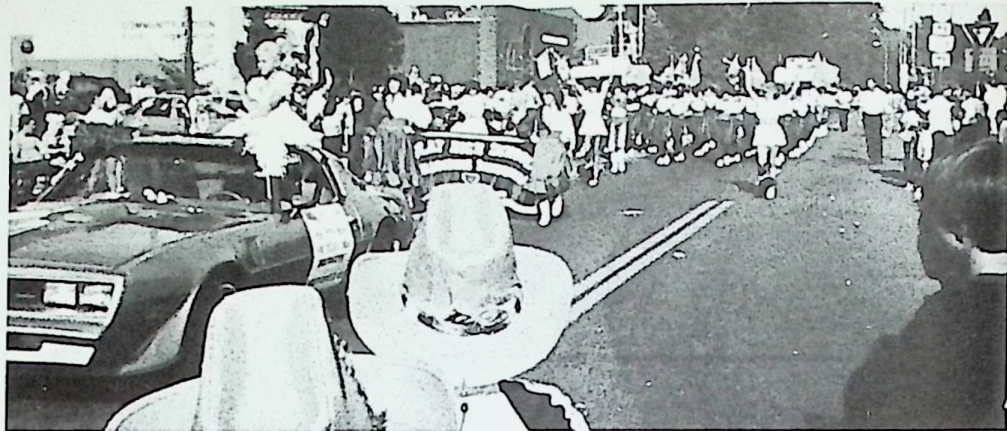




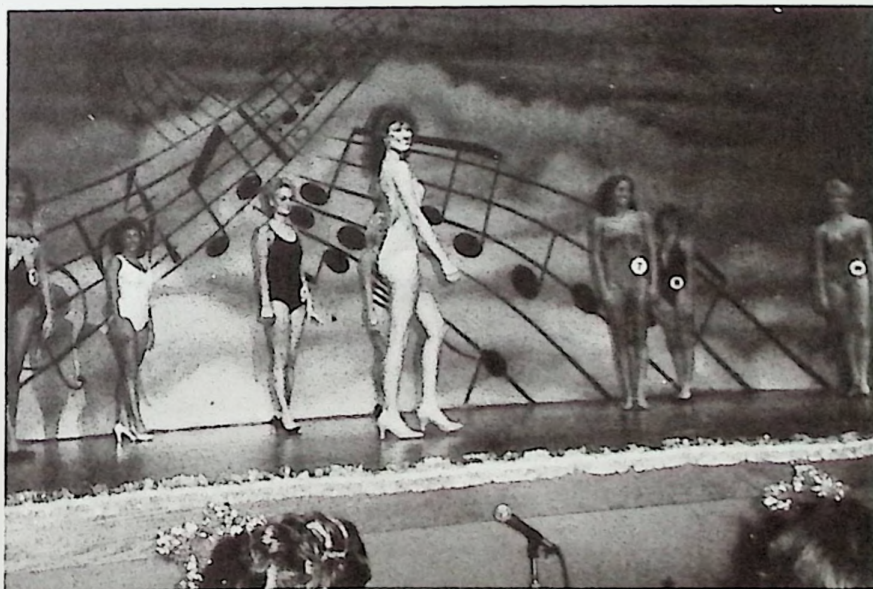
Highlights of River Days 1984

Parade . . .

Clay High School was well represented by 1984 River Days Queen Candidate Kim Gearheart and the Marching Panthers. The band, under the direction of Junior Field Commander Almee Davis, entertained crowds with Spanish Armada and Clay High while the Flag Corps and majorettes performed. River Days also marked the debut for the Marching Panthers in their new uniforms. Kim's float featured a baseball diamond background and Kim wore a sequined baseball outfit.



Pageant . . .



The 1984 River Days Queen Pageant was held September 1, 1984 at Shawnee State Community College Auditorium. Our Queen Candidate, Kim Gearheart, is a daughter of Lewis and Betty Gearheart of 3892 Heuter Rd. Kim wore a long, white satin dress. Kim's friendliness and charming personality won her Miss Congeniality, an honor chosen by other queen candidates.

We, the students of Clay High School, would like to extend our congratulations.

JUNIOR - SENIOR "INSPIRATIONS"



PROM COMMITTEE - First Row: Herman Patrick, DJ Church, Second Row: Kelly Platt, Missy Franklin, Angel Scaggs, Third Row: Darin Miller, Noelle Horsley, Steve Harris

The Junior - Senior Prom of 1985 was one of the best proms any Clay High School student could have attended. The colorful decorations of lavender, teal, pink and blue were displayed creatively throughout the "Meeting Place." The buffet was a delicacy. The music and videos provided by Nate Hager, were a unique touch to this years prom. All seniors should thank all participating members of the Junior class for an evening that they will never forget. It was a night of lasting memories and new inspirations.

Susie LeMaster
Leighanne Conley Rees



PROM HOSTS AND HOSTESSES - Lisa Brush, Brian Montgomery, Jennifer Goodballet, Jon Beegan, Barble Martin, John Ricks, Kelly Warner, Greg Ruby



Prom Committee Members Noelle Horsley and Missy Franklin present Mrs. Roberts a gift for her dedication and work to make the prom a success.



Senior Class President Ed Lynch reads the class will from the seniors to the juniors.



Boogie Down, Usal

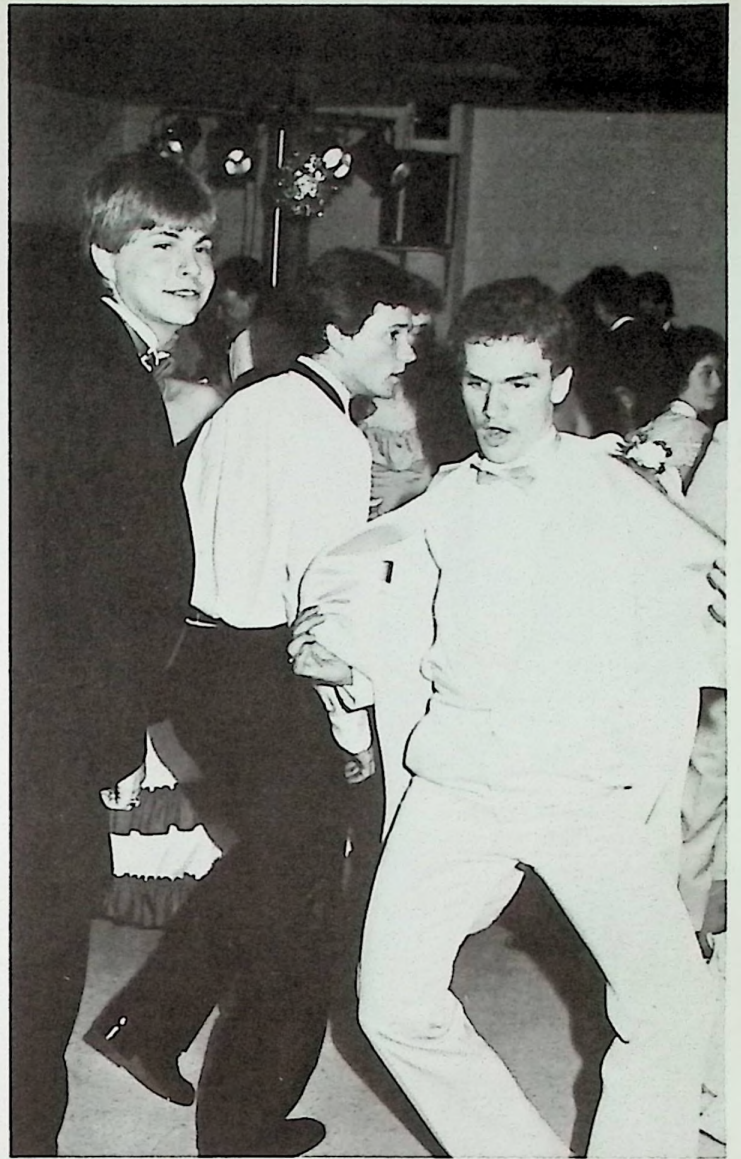


1985 Prom Chaperones









Sadie Hawkins Day and Dance

Sadie Hawkins Day and Dance

Sadie Hawkins Day began with everybody dressing like hillbillies and hobos. Most of the people wore faded jeans and flannel shirts, while others wore torn and patched cut-off jean shorts with a pair of long johns underneath. Corn cob pipes and big straw hats were the big attraction on this day, and for once everybody had fun dressing like a former's daughter or son. That night was the Sadie Hawkins Dance. The music was provided by two members of our school, John Ricks and Shaine Sullivan. While some danced, others were getting their pictures taken in front of a background that looked like a barn with cornstalks surrounding it. They also had a large barrel for the students to sit on to get their pictures taken. Some other people were busy getting hitched by the Clay High School Varsity and Reserve Cheerleaders, sponsors of the dance. After the couple got hitched they received a certificate showing that they were officially hitched for the rest of the night and the girls received a ring made of pipe cleaners and different colored paper. The cafeteria was decorated with different colors of paper and streamers. The dance started at 7:00 p.m. and ended at 10:00 p.m. and by then we were all ready to go home or go eat pizza and relax for a while. It had been a fun day.

Traci Blevins



Highlights of "Let's Go Crazy" Dance



Freshmen and sophomores enjoy the yearbook dance.



Jenny, Lisa and Toni get down.



Marc and Cindy



Guys enjoy going crazy!



Lisa Broughton



Fred Lester's "Captain Zero" costume wins first prize.



Tony Moritz

1985 HOMECOMING "SOMEWHERE IN TIME"



Queen Angela Horsley, Escort Terry Craft

HOMECOMING GAME AND DANCE

The night of the homecoming was one to remember. Angela and her court which consisted of Senior Attendant Angela Broughton escorted by Jim Vostine, Senior Vo-Tec Attendant Moni Stillner escorted by Mike Warner, Junior Attendant Aimee Davis escorted by Tony Moritz, Junior Vo-Tec Attendant Traci Tomlin escorted by Herman Patrick, Sophomore Attendant Lisa Broughton escorted by Brian Ratliff and Lori Picklesimer, Freshman Attendant escorted by Bryan Conley, were dressed in semi-formal dresses of rainbow colors. Queen Angela was dressed in a formal dress which was made of shimmering taffeta. Angela's theme was "Somewhere In Time", and she was escorted by senior varsity basketball player, Terry Craft. The crown was presented by Shane Tleman and Angela was presented with a bouquet of roses by her sister, Emily Horsley.

The homecoming game was a success with Clay defeating East by a score of 48-43.

After the game, the Homecoming Dance was held in the cafeteria. The dance was semi-formal and was a delight for all. Music was played by Shaine Sullivan and John Hicks. The cafeteria was beautifully decorated with streamers and crepe paper. At the dance, Queen Angela was escorted by Brian Ratliff and reigned over the dance in her honor. When the dance ended at 11:30, all agreed that it had been an enjoyable night.



Angela Broughton, SENIOR



Moni Stillner, SENIOR VO-TEC



Aimee Davis, JUNIOR



Brian and Angela



Traci Tomlin, JUNIOR VO-TEC



Lisa Broughton, SOPHOMORE



Lori Picklesimer, FRESHMAN

SENIOR CLASS PLAY HIGHLIGHTS



SENIOR PLAY CAST - First Row: Lisa Lelve, Angie Craft. SECOND ROW: Mr. Stone, Leighanne Conley, Kim Gearheart, Susie LeMaster, Kim Martin, Mary Oberling, Cheryl Glenn. THIRD ROW: Ed Lynch, Jim

Vastline, Terry Craft, Angela Horsley, Jill Wilson, Rick Rowe, Steve McCain, Terry Locher. FOURTH ROW: Fred Lester, John Parr.

CAST OF CHARACTERS "HORROR HIGH"

Director - Mr. Robert Stone
 Student Director - LoVonne Mosley
 Assistant In Charge of Production - Karen Adams
 Ferdinand - John Parr
 Debra Dubonnet - Kim Gearheart
 Mrs. Wellington - Leighanne Conley
 Audrey Cotter - Kim Martin
 Edna - Lisa Lelve
 Clint - Ed Lynch
 Burt - Jim Vastline
 Miss Crushrose - Cheryl Glenn
 Elmo - Terry Craft
 Joe - Terry Locher
 Evelyn - Jill Wilson
 Marcus - Steve McCain
 Marlo Grim - Angela Horsley
 Spot - Jim Dearth
 Dr. Diggs - Angie Craft
 Don - Rick Rowe
 Ken - Freddie Lester
 Hope - Susie LeMaster
 Miss Grim - Mary Oberling
 Carrie Blsquetbarrel - Susie LeMaster

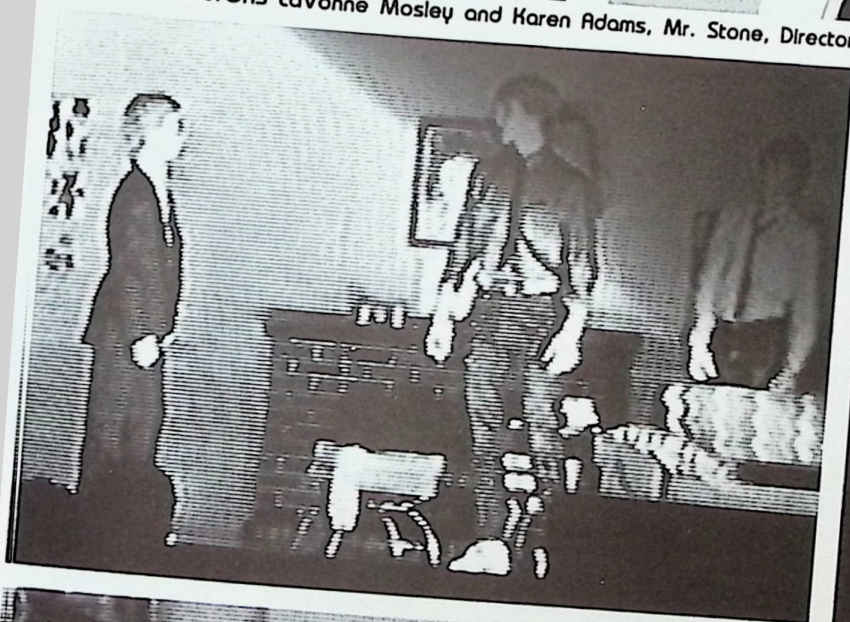
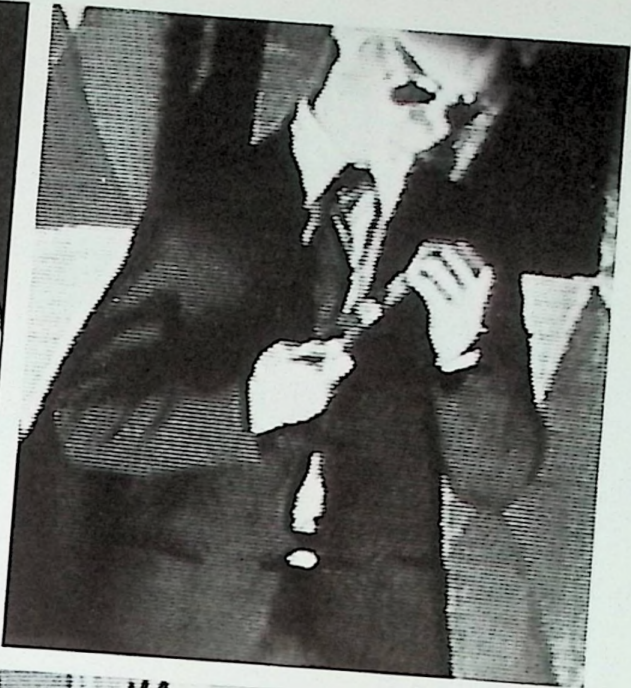
PROMPTER - Karen Adams
 STAGE CREW: Mike Warner, Steve Adams, Joe Tener, John Kaut
 LIGHTS AND MUSIC: Mark Tropp
 MAKEUP: Amy Lutz



SENIOR CLASS PLAY CREW - FIRST ROW: Angela Broughton, Amy Lutz, Sandy Charles. SECOND ROW: John Kaut, Mike Warner, Steve Adams, Spencer Swayne.



STUDENT DIRECTORS LaVonne Mosley and Karen Adams, Mr. Stone, Director



SENIORS

We are the Seniors. Stretching toward the future and grasping at the past, we stand together. The end of the year brings our separation, but the Spirit of 85 will continue to live among the unread chapters, abandoned science projects, and the unreturned library books. We did our best.

Remember us.

We are the Seniors.



Lisa Lelve, Vice-President, Steve McCain, Treasurer, Ed Lynch, President, Leighanne Conley Rees, Secretary



Karen Marie Adams



Stephen Michael Adams



Brian Adkins



Rhonda Bailey



Angela Rene Broughton



Jodi Burgess



Steve Caseman



Sandy Charles



Connie Diane Church



Angela Colegrove



Leighanne Conley Rees



Angle Craft



Terry A. Craft



Jim Dearth



Tammy Fraley



Kim Lynette Gearheart



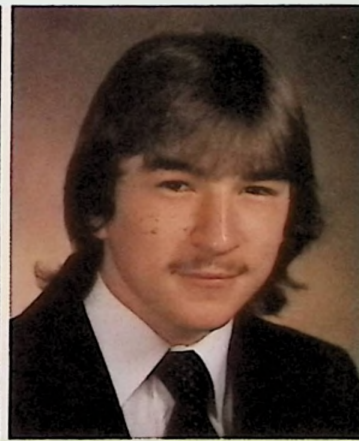
Cheryl Glenn



Susan A. Gulley



Angela Marie Horsley



Jerry Horton



Shane Anthony Hudson



Sharon Kay Kelley



Donna Marie Leach



Lisa Leive

SENIOR SUPERLATIVES



MOST LIKELY TO SUCCEED - Usa Leive, Ed Lynch



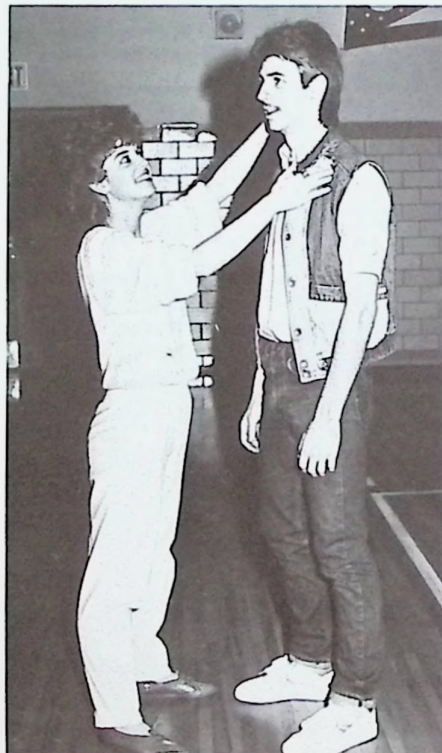
BEST SMILE - Cheryl Glenn



CLASS CLOWNS - Angie Craft, Fred Lester



MOST TALENTED - Usa Leive, Steve McCain



BEST LOOKING - Jill Wilson, Terry Craft



MOST SPIRITED - Angela Horsley, Terry Craft



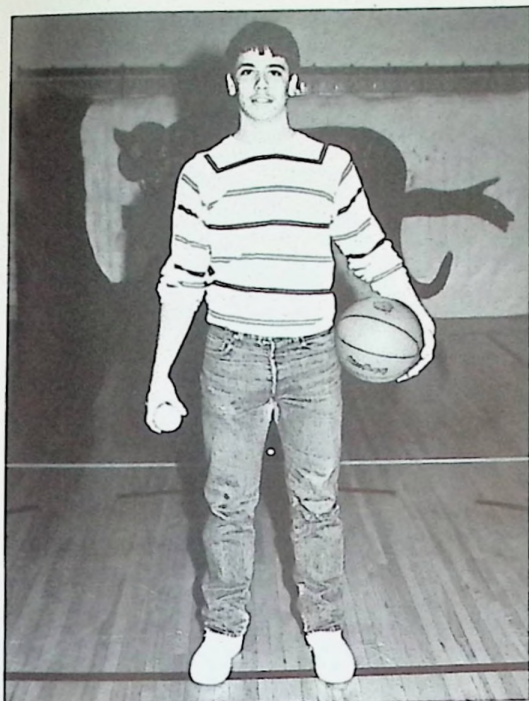
MOST LIKELY TO CAUSE ANNOYANCE - Kim Martin, Fred Lester



SHYEST - Rhonda Bailey, John Kaut



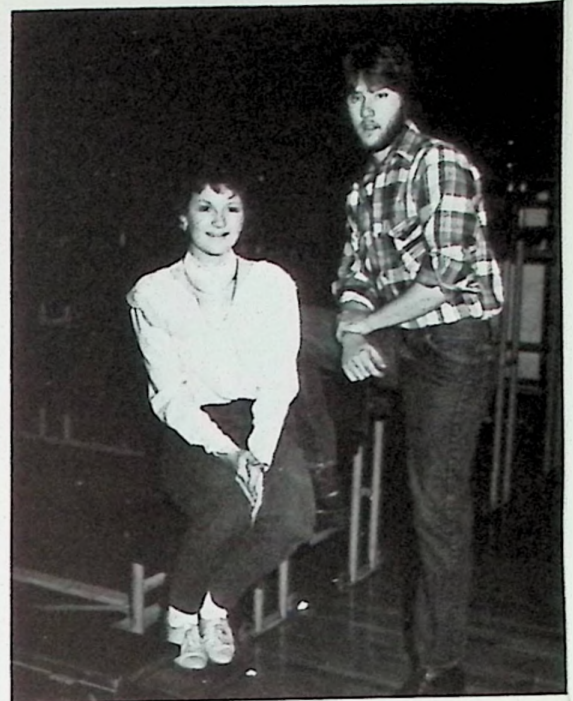
CLASS MUNCHKINS - Cheryl Glenn, Rick Rowe



MOST ATHLETIC - Mark Trapp



MOST ATHLETIC - Angle Craft



BEST VOCATIONAL STUDENT - Jodi Burgess, Charlie Miller



BEST ALL AROUND - Cheryl Glenn, Terry Craft



BEST DRESSED - Leighanne Conley, Spencer Swayne



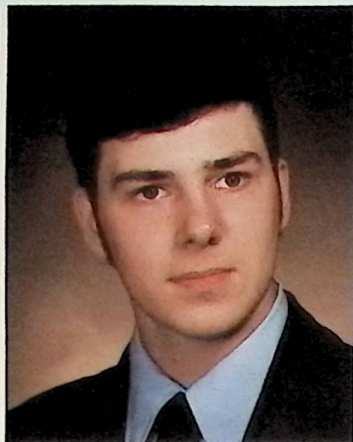
MOST LIKELY TO RETURN TO PORTSMOUTH - Cheryl Glenn, Jim Vestine



LAZIEST - Amy Lutz, Terry Craft



Susan Elaine LeMaster



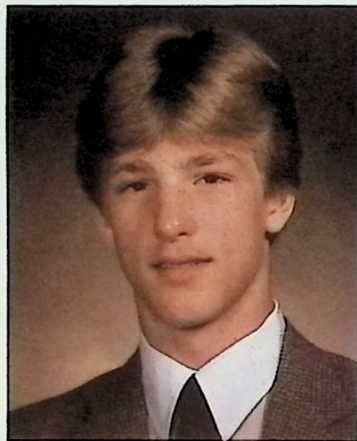
Fred Lester



Terry Locher



Amy Lutz



Ed Lynch



Kimberly Martin



Stephen Ray McCain



Pam Melvin



Charles G. Miller



LaVonne Chrystine Mosley



Becky Nichols



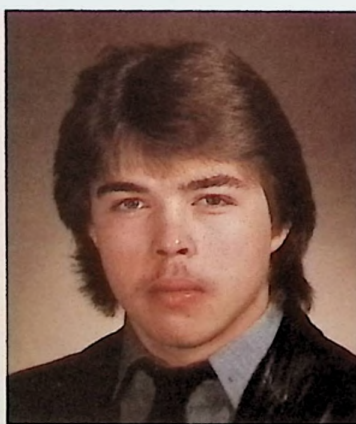
Debra Nourse



Mary Oberling



John Parr



Lee Binkley Pyles



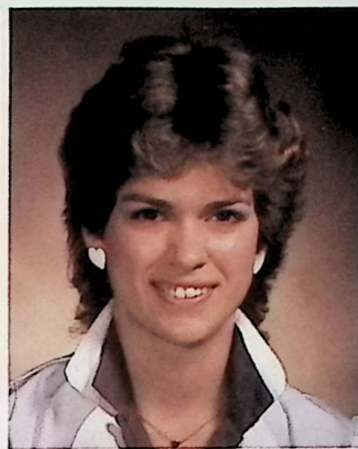
Melissa Robinson



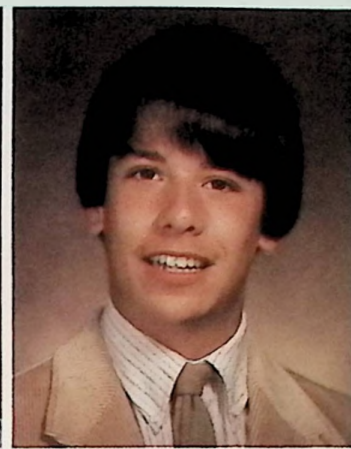
Eric Rowe



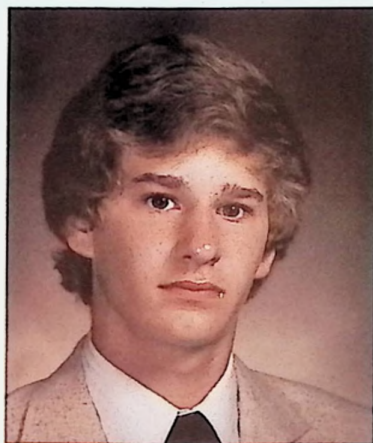
Debbie Scaff



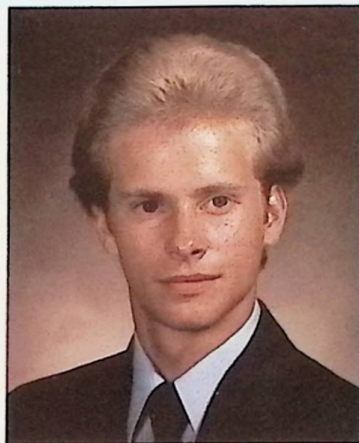
Ramona H. Stiltner



Mark Trapp



Jim Vastine



Michael E. Warner



Carolyn J. Webb



Sonja Webb



Tony Whitt



Jill Renee Wilson



Mark Wilson



Andrew L. Wright

CAMERA SHY
 Patty Barry
 Todd Conley
 Elmer Gregory
 Rocky Jordan
 John Kaut
 Jon Moritz
 Kevin Newman
 Cindy Leigh Perkins
 Kevin Pollard
 Spencer Swayne

SENIOR ACTIVITIES HIGHLIGHTS

KAREN MARIE ADAMS - Latin Club 1,2, Volleyball 1,2,3,4, Basketball 1,2,3,4, Softball 1,2,3,4, Spanish Club 3, Library 3, Class Play 3,4, Science Club 4, Office 4

STEPHEN MICHAEL ADAMS - Band 1,2,3,4, Spanish Club 1,2,3, Pep Band 1,2,3,4, Science Club 3,4, Library Staff 3,4, Jazz Band 4, Brass Choir 4, Guidance Office 4

BRIAN ADKINS - Basketball 1,2, Band 1,2, Baseball 2,3,4

ANGELA RENE BROUGHTON - Volleyball 1,2, FHA 1,4, FTA 3,4, Science Club 1,2, Band 2,3, Library Staff 3, Spanish Club 3, Class Play Crew 3,4, Spanish Scholarship Team 3

JODI BURGESS - Cheerleader 1, Band 1,2, Majorette 2, Volleyball 2,3,4, Class Representative 3, OEA Executive Council 3, Class Parliamentarian 4

CONNIE DIANE CHURCH - Mixed Chorus 1,2, DECA Club Co-sales Chairman, Washington High School Teachers Aide 3

ANGELA COLEGROVE - FHA 1,2,3, Debate Team 1, Yearbook Staff 2, Bowling Team 2, District Representative 2, President of Class 3, Student Council 3, Prom Committee 3, VICA Class Chaplain 4

LEIGHANNE CONLEY REES - Band 1,2, Spanish Club 1,2,3, Majorette 1,2, Yearbook Staff 1,2, Asst. Editor 3, Editor 4, English Scholarship Team, 6th in District 1, Mixed Chorus 1,2,3,4, Library Staff 2, English Scholarship Test 2, Spring Prom and Bridal Fair Model 2, American History Scholarship Team 3, Class Play 3,4, Prom Committee 3, Girl's Ensemble 3, FTA 3,4, Class Secretary 4, Office Worker 4, All County Chorus 4, Government Scholarship Team 4, Newspaper Typist 4, Senior Superlative, Best Dressed, 4

ANGIE CRAFT - Band 1,2,3,4, Pep Band 1,2,3, Latin Club 1,2, Science Club 1,2,3, Quiz Bowl 1,2,3,4, Volleyball 1,2,3,4, Softball 1,2,3,4, Basketball 1,2,3,4, Band Council 2, Student Council 3, Jazz Band 3,4, Brass Choir 3, Class Play 3,4, Junior Honors 3, National Honor Society 3,4, FTA 3,4, Teenage Institute 3,4

TEARY A. CRAFT - Basketball 1,2,3,4, Bible Club 1,2, FHA 1,2, Mixed Chorus 1,4, Science Club 3

JIM DEARTH - Latin Club 1, Spanish Club 4

KIM LYNETTE GEARHEART - Band 1,2,3,4, Latin Club 1,2, Majorette 2, Head 3,4, Prom Hostess 2, Band Council 2,3,4, English Scholarship Team 2, Spanish Club 3, FTA 3,4, River Days Candidate 3, Class Play 3,4, Spanish Scholarship Team 3, FHA 4, Library Staff 4

CHERYL GLENN - Bible Club 1,2, Pep Club 1, Latin Club 1,2, Science Club 1,2,3,4, Pep Band 1,2,3,4, Jazz Band 1,2,3,4, Band 1,2,3,4, Mixed Chorus 1,2,3,4, Basketball 1,2,3,4, Softball 1,2,3,4, Volleyball 1,2,3,4, English Scholarship Team 1,2,3,4, Prom Hostess 2, Spanish Club 3, Class Play 3,4, Yearbook Staff 4, FTA 3,4, Newspaper 4, Senior Superlative Best All Around and Best Smile 4

SUSAN A. GULLEY - Basketball 1, Softball 1,2, FHA 1,2, President 3, Band 1,2, Yearbook

Staff 2, Majorette 2, Class Secretary 2, Class President 3, OOE 3,4, Executive Council Member 3

JERRY HORTON - Bowling Team 1,2, VICA 3,4

ANGELA MARIE HORSLEY - Cheerleader 1,2,3,4, Latin Club 1,2, Band 1,2,3,4, Candystriper 1,2,3, Prom Hostess 2, Student Council 3, Band (All County) 3,4, Scholarship Team 2,3,4, Prom Committee 3, Student Council Secretary 3, Jazz Band 3,4, Class Play 3,4, Spanish Club 3, Rio Grand Free Enterprise Camp, Volleyball 3,4, Yearbook Staff 3, Asst. Editor 4, Mixed Chorus 3,4, Senior Newspaper 4, All County Chorus 4, Homecoming Queen 4

SHANE ANTHONY HUDSON - Baseball 1,2,3, Bowling Team 1,2, VICA Class President 3,4

SHARON KAY KELLY - Volleyball 1, Basketball 1,2, Library Staff 1,2,3, Latin Club 1, DECA Club 4, Class Representative 4

JOHN A. KAUT - Spanish Club 3

DONNA MARIE LEACH - FHA 1,2,3, Band 1, Science Club 2, OOE 3, Stage Crew 3, Class Parliamentarian 3, History Scholarship Test 3, Parliamentary Procedure Team 4

LISA LEIVE - English Scholarship Team 1,2,3, Volleyball 1,2,3,4, Basketball 1,2,3,4, Softball 1,2, Latin Club 1,2, Band 1,2,3,4, Pep Band 1,2,3,4, Bible Club 1,2, Science Club 2, National Honor Society 3,4, Quiz Bowl 3,4, Prom Committee 3, Spanish Club 3, Jazz Band 3,4, Brass Choir 3,4, Senior Class Vice-President, Class Play 3,4, Senior Mentorship, Science 4, All County Band 4

SUSAN ELAINE LEMASTER - Softball 1,2,3,4, Volleyball 1,2,3, Spanish Club 1,2,3, Spanish Scholarship Team 1,2, Candystriper 1,2, Band 1,2,3,4, Library Staff 2, Homecoming Attendant 2, Prom Hostess 2, Cheerleader 3,4,

Yearbook Staff 3,4, Class Play 3,4, Banner Carrier 4, Pep Band 4, Jazz Band 4, Chorus 3,4, Office Worker 4, Band Council 4, All County Band 4

FRED LESTER - Class Play 3,4

TERRY LOCHER - Class Play 4, Soccer Team 4, VICA 4, Tour Guide 4

ED LYNCH - Golf 3, Science Club 3, Spanish Club Secretary 3, Class Play 3,4, Scholarship Team 3, All County Chorus 3,4, Mixed Chorus 3,4, Prom Committee 3, Soccer Team 4, Quiz Bowl 4, Class President 4, National Honor Society 4

KIMBERLY MARTIN - Latin Club 1,2, Band 1,2,3,4, English Scholarship Team 1,3,4, Biology Scholarship Team 2, Quiz Bowl 2,3,4, Cheerleader 2,3, 3rd Place All County Science Fair, Band Council 1,3, Pixley Junior Honors 3, Homecoming Attendant 3, FTA 3,4, All County Band 3, Class Play 3,4, Jazz Band 2,3,4, All County Science Award 3, Who's Who 4

STEPHEN RAY MCCAIN - Band 1, Spanish Club 1,2, President 3, Bible Club 1, Baseball Team 2,3, Science Club 2,3,4, Spanish Scholarship Team 2, Library Staff 2,3,4, American History Scholarship Team 3, Prom Committee 3, Class Play 3,4, Soccer Team 4, FHA District Representative 4, Class Treasurer 4, Yearbook Staff 4, Government Scholarship Team 4

PAM MELVIN - VICA 3,4

CHARLES G. MILLER - VICA 3,4, Heating and Air Conditioning Vice President

LAVONNE MOSLEY - Band 1,2,3,4, All County Band 1,2,3,4, Latin Club 1,2, Volleyball 1,2,3, Scholarship Team- Algebra I 1, Algebra II 2, Geometry 3, English 4, Pep Band 2,3,4, Spanish Club 3, Yearbook Staff 3,4, Class Play 3,4, FTA 3,4, Junior Honors Program, National



Honor Society 3,4, Quiz Bowl 4, Senior Mentorship Program.

KEVIN E. NEWMAN - Bowling Team 1,2, VICA 3,4

DEBRA NOURSE - Band 1, Class Play 3

MARY OBERTING - Class Play 3,4

JOHN PARR - Band 1,2,3,4, Jazz Band 1,2,3,4, Pep Band 1,2,3,4, All County Band 1,2,3,4, Spanish Club 1,2,3, Basketball Manager 3, Brass Choir 3,4, Library Staff 3,4, Nominated for McDonald's All American Band 4

CINDY LEIGH PERKINS - Band 1,2, Office Worker 1, Homecoming Attendant 1, Class Vice President 1,3, 2nd Runnerup Miss Tradewinds, Prom Committee 3,4, Miss Tradewinds 4, OEA Queen Runnerup 4

LEE BINKLEY PYLES - Baseball 1,2, Basketball 2

MELISSA ROBINSON - Prom Committee 3, OEA Vice President 3, Class Play 3, Yearbook Staff 4, Historian 4, Tour Guide 4, OEA Queen 2nd Runnerup

ERIC ROWE - Bible Club 1,2, Basketball 2, Spanish Club 3, Soccer Team 4, Class Play 4

ARMONA H. STILTNER - Chorus 2, VICA 3,4, Class Parliamentarian, Senior Vo-Tec Homecoming Attendant

MARK TRAPP - Spanish Club 1,2, Treasurer 3, Basketball 1,2,3,4, Baseball 1,2,3,4, Golf 1,2,3,4, Class Secretary 1, Science Club 2,3,4, Mixed Chorus 3, Library Staff 3,

American History Scholarship Team 3, Prom Committee 3, Class Treasurer 3, Class Play 3

JIM VASTINE - Basketball 1,2,3,4, Spanish Club 1,2,3, Band 1,2, Golf 1,2,3,4, Baseball 2, Science Club 2,3,4, Library Staff 2,3,4, Class Play 3,4, Newspaper 4

MICHAEL E. WARNER - Golf 1,2,3,4, Basketball 1,2,3,4, Baseball 2,3,4, Spanish Club 3, Class Play 3,4, Science Club 4, Library Staff 4

CAROLYN J. WEBB - FHA 1,2, VICA 3,4, Class Treasurer 4, Prom Committee 4

SONJA WEBB - Band 1,2, Majorette 1,2, Class Vice President 2, Student Council 2, FHA 2, Pep Band 2, VICA 3,4, Cosmetology Treasurer 3, Vice President 4, VICA Queen 1st Runnerup, Miss Tradewinds 1st Runnerup 4

TONY WHITT - Baseball 1, Basketball 1,2, Bowling Team 1,2

JILL RENEE WILSON - Volleyball 1,2,3,4, Cheerleader 2,3,4, Quiz Bowl 1,2,3,4, National Honor Society 3,4, Student Council 3, Science Club 2,3,4, Mixed Chorus 1,2,3,4, Girl's Ensemble 1,2,3, Band 1,2,3,4, Jazz Band 1,2,3,4, Latin Club 1,2, Spanish Club 3, Yearbook Staff 4, Softball 1,2, Basketball 1, Scholarship Team 1,2,3,4, Rotary Club Student Representative 4, Hugh O'Brien Representative 2, FTA 3,4, Pixley Scholar 4

MARK WILSON

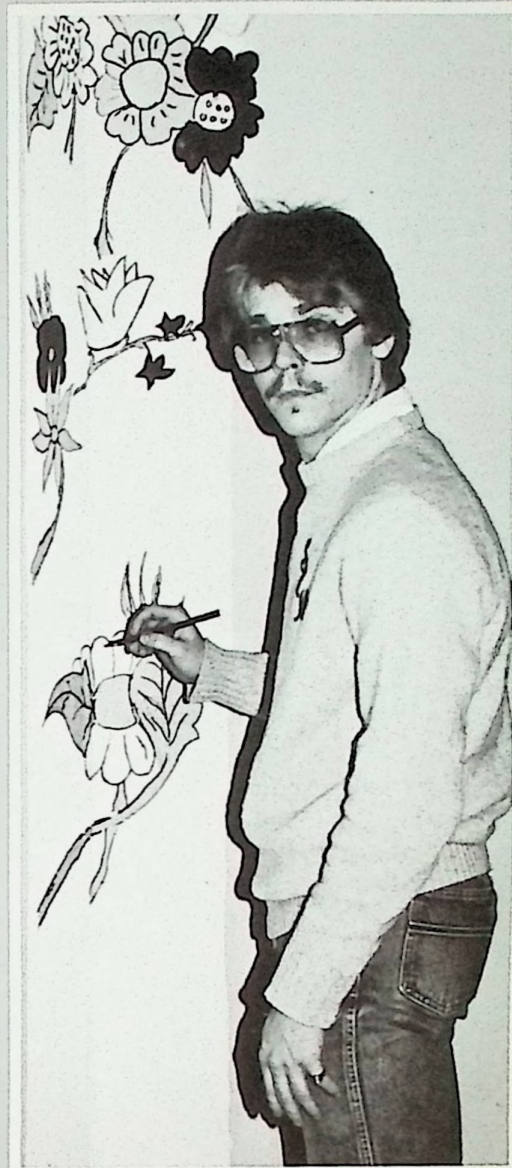
ANDREW L. WRIGHT - DECA 4

CLASS FLOWER - PINK CARNATION

CLASS SONG - "LET'S GO CRAZY"

CLASS COLORS - PINK AND GRAY

CLASS MOTTO - Not everything that is faced can be changed; But nothing can be changed until it is faced.

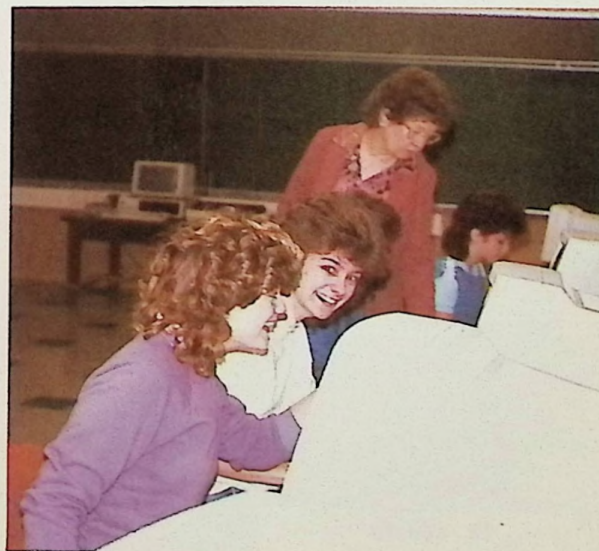


Highlights of Juniors and Seniors



Kim Gearheart, River Days Candidate





JUNIORS



Darrin Miller
Vice President

Noelle Horsley
President
(Treasurer Mykal Riddlebarger not pictured)

Missy Franklin
Secretary





Carla Adams
Crystal Blackburn



Mark Blevins
David Braden



Joey Brewer
Stacy Chandler



DJ Church
Bryan Conley



JUNIORS

Susan Conley
Almee Davis
Jeff Davis
Sally Day



Tammy Sowards Engle
Missy Franklin
Kris Fausset
Harry Gulley



Sheri Hamilton
Steve Harris
Jill Hauth
John Hemmings
Noelle Horsley



Bonnie Ingles
Nicole LaNier
Linda Leach
Sherman Martin
Doug Mendo



Darrin Miller
Louis Minch
Lisa Mingus
Shella Montgomery
Tony Moritz



Lynn Neal
Samantha Newman
Amy Noel
Herman Patrick





Tina Payne
Kim Penwell
Tammy Perkins



Julie Phipps
Kelly Platt
Brian Pistole



Brian Rotliff
Mykal Riddlebarger
Julie Rowson



Kathy Sanders
Angel Scaggs
Garry Sexton



Rick Timberlake
Traci Tomlin
Sherman Tracy
Bobbi Turner



Traci Steele
Shawn Whisman
Beth Wright

Juniors Present "Toga! Toga! Toga!"

CAST

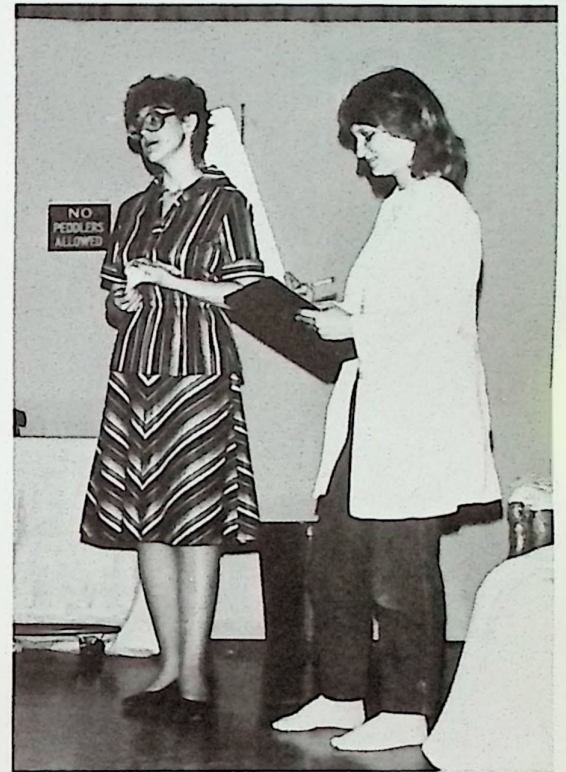
| | |
|---------------------|-------------------|
| Vegetable | Jeff Davis |
| Fred | Mark Blevins |
| George Brewster | Darin Miller |
| Curt | Garry Sexton |
| Alex | Herman Patrick |
| Miss Butterworth | Kelly Platt |
| Madame Stella | Kris Fousett |
| Troubled Lady | Sheila Montgomery |
| Velma | Angel Scaggs |
| Murtle | Amy Noel |
| Nora | Kim Penwell |
| Mrs. Smith | Almee Davis |
| Miss Woebegone | Missy Franklin |
| Sluggo | Doug Mendo |
| Mrs. Moontrap | Kathy Sanders |
| Gloria Ketchum | Nicole LaNier |
| Murdock Biddlestone | Harry Gulley |
| Murray | John Hemmings |
| Melissa | Noelle Horsley |
| O'Hara | Steve Harris |
| Miss Peachy | Julie Rowson |



CREW

| | |
|-----------------------------|---|
| Prompter: | Jill Hawth |
| Props: | Brian Rothliff Tony Moritz Susan Conley |
| Lights and Music: | Lisa Mingus |
| Makeup: | Crystal Blackburn Tammy Perkins Julie Phipps Sally Day |
| Stage Crew: | Julie Phipps Herman Patrick Kathy Sanders Lisa Mingus Angel Scaggs Sheri Hamilton John Hemmings Steve Harris |
| Stage Crew Faculty Advisor: | Mr. Brad Bauer |
| Student Directors: | Traci Steele Lisa Mingus |
| Faculty Director: | Mr. Robert Stone |





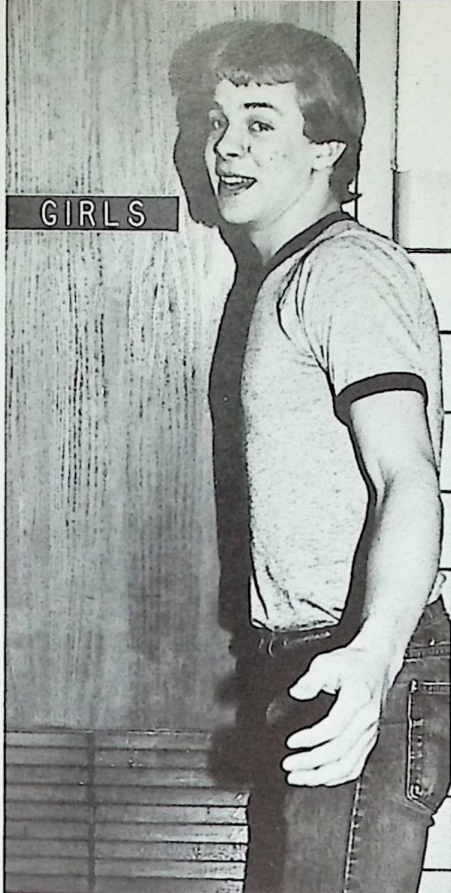
SOPHOMORES



Aaron Williams - President, Barble Martin - Secretary, Steven Dransfield - Treasurer, Jon Beegan - Vice President



GIRLS



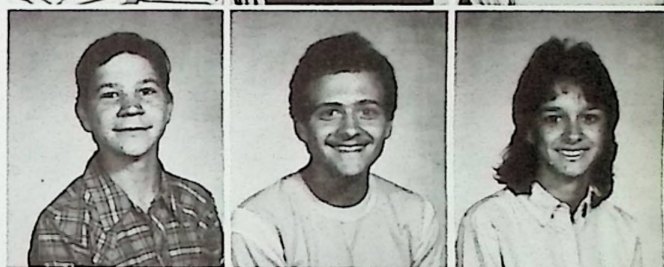
Bucky Applegate
Beth Atkins
Shannon Bare



Jon Beegan
Paul Blevins
Bruce Blevins



Brian Bloomfield
Steve Burke
Lisa Broughton



Lisa Brush
Louvenna Campbell
Klerstyn Canter



Neil Clark
Steven Dransfield
John Eldridge
Timmy Fields



Darby Gable
Craig Gearheart
Jennifer
Goodballet
Vonda Gray





Don Kelley
Brent Kimbler
Alicia Kowalchuk



Barbie Martin
Larry McDaniel
Frank McNutt



Tina Melvin
Brian Moore
Brian Montgomery



Crystal Myers
Heath Pack
Paula Pelfrey



Kim Penix
Troy Pennington
Tracy Pollard
Mike Plummer



Roger Romey
John Ricks
Tony Robinson
Greg Ruby





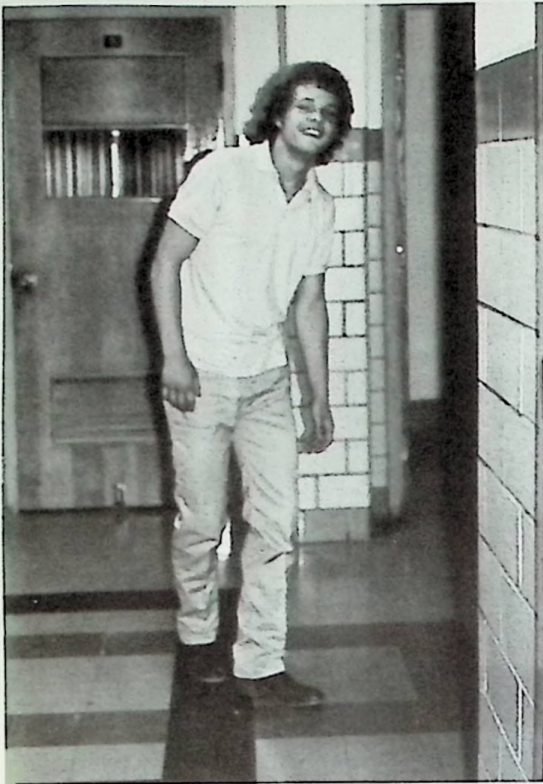
Susie Scott
Sheila Skaggs
Shalne Sullivan
Michele Turner



Kelly Warner
Tabby Whisman
Aaron Williams
Marlene Whitt
Jay Winters



SOPHOMORE HIGHLIGHTS



SOPHOMORES - "What can we say?"





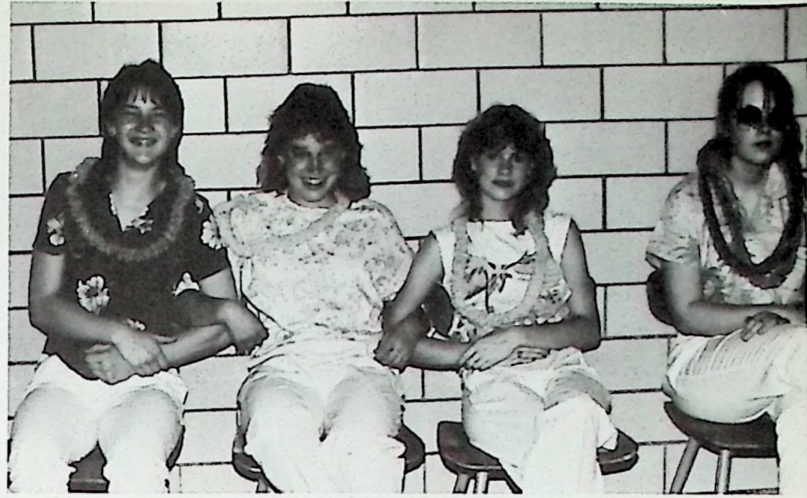
SOPHOMORES HAVE SPIRIT!!!



SOPHOMORES LOVE BIOLOGY

FRESHMEN/SOPHOMORES GO HAWAIIAN!!





Freshmen



Lori Picklesimer, Secretary; Tim Malone, Treasurer; Jason Gearheart, Vice President; Danny DeLotell, President





Jeff Adkins
Daren Allard



Kasey Bertram
Traci Blevins



Donna
Bloomfield
Alvin Bramlette



Toni Burchett
Chris Burton



Art Carpenter
Dickie Chaffin



Tracy Colegrove
Brent Conley
Eddie Cook



Marc Cottle
Jackie Crabtree
Richard Crumm
Tonya Daniels



Sheryl Davis
Danny
DeLotell
Steve DeLotell
Gina Dyer



David Easter
Robin Ekleberry
Cindy Elliott
Sally Eshem
Donna Fannin



Angie Gardner
Valerie Gardner
Jason Gearheart
Harold Hoover
Dawn Horton



Julie Howell
Rhonda Hunter
Wayne Johnson
Jill Keaton
Sean Kelly

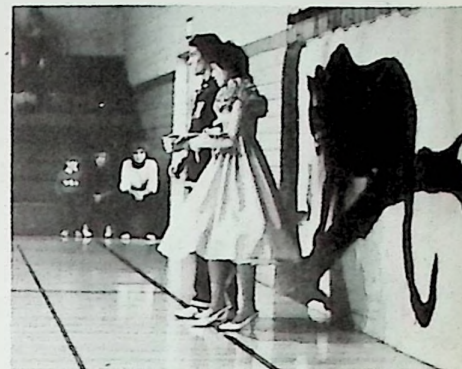


Michele Kinker
Jeff Lewis
Tim Malone
Jennifer Morsh
Julie Moys





Michele McGowan
Robbie Moore
Rhonda Newman



Angela Palmer
Kerry Parr
Jody Pelfrey
Teresa Platt



Lori Picklesimer
Cindy Powell
Jennifer Pridemore
Melissa Scaff



Lisa Schlitz
Chris Seagraves
Laura Skaggs
Sheri Sowards

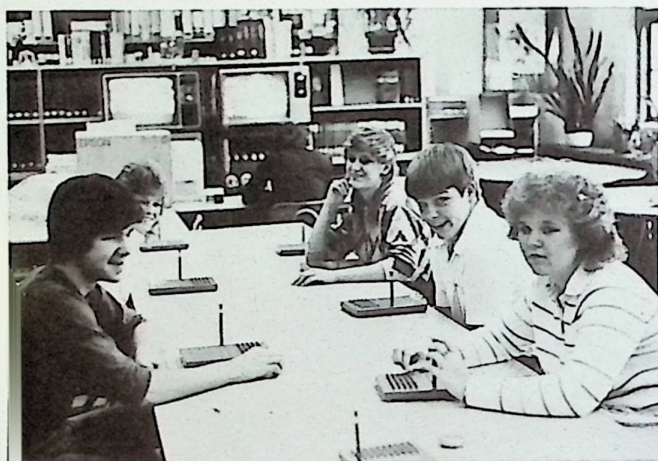
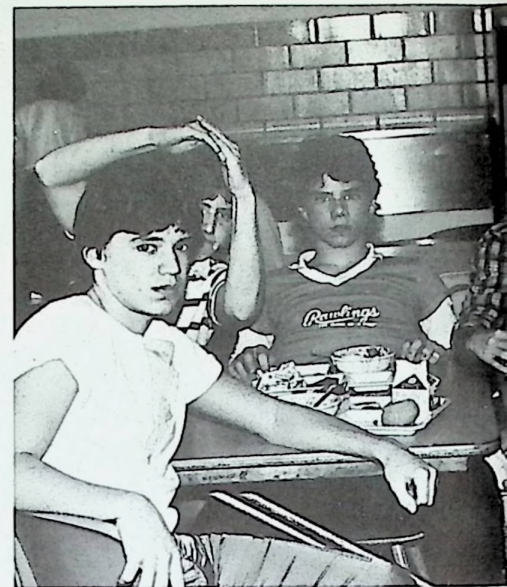


Jamie Stamper
Chris Swayne
John Terry
Lisa Webb



Jackie Weber
Rhoda Whisman
Benji Wiget
Beth Woodrum

Freshmen Highlights

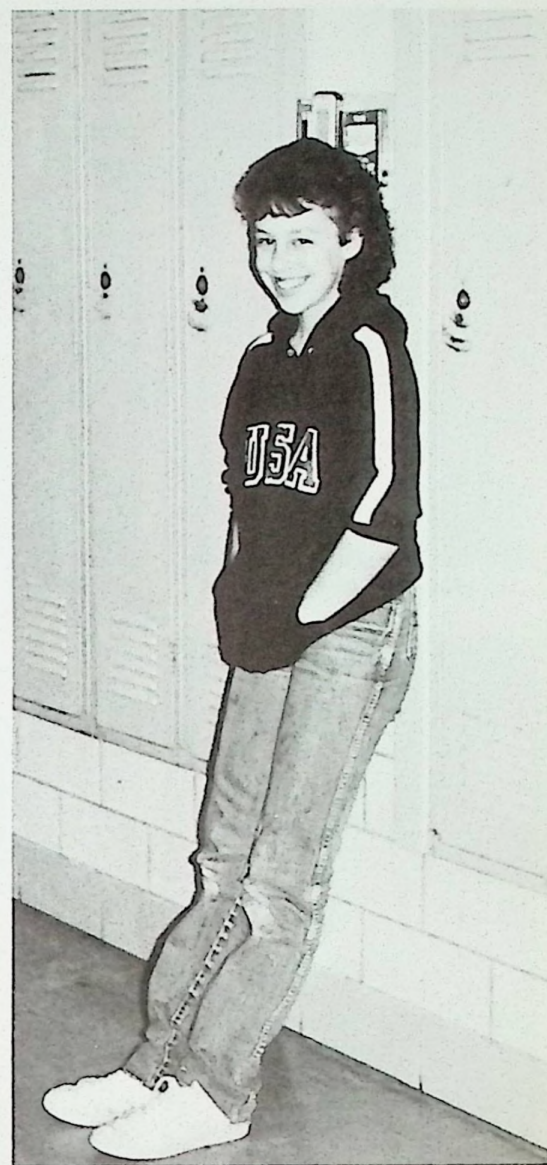


Ready ... Set ... GATBII



50 FRESHMEN





FACULTY



Mrs. Rucker, Guidance Counselor



Mrs. Parkes, Librarian



Mr. Stone, DH



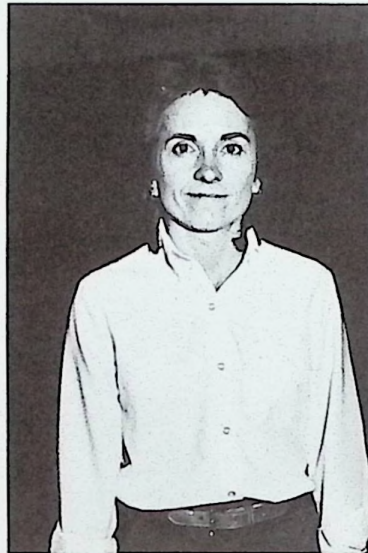
Mrs. Brammer, LD



Mr. Cayton, Orthopedic
Handcapped



Mrs. Phillips, Art



Miss Boldman, P.E.



Mr. Leightenheimer, P.E.



Mr. Bauer, Industrial Arts



Miss Moore, Home Economics

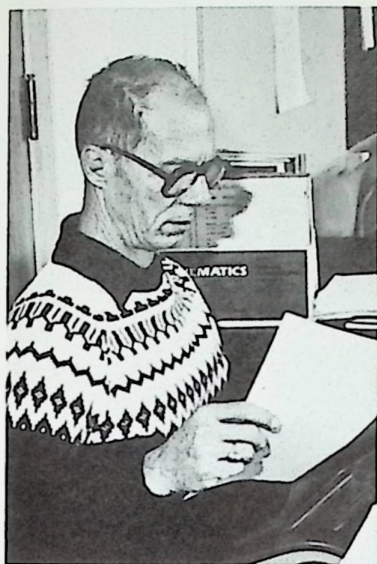


Mr. Fields, Band



Mrs. Leightenheimer, Vocal Music

FACULTY



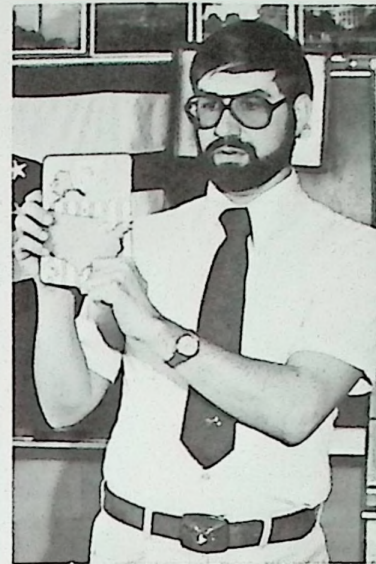
Mr. Lelve, Math



Mr. LeMaster, English



Mrs. Vice, English



Mr. Pack, Social Studies



Mr. Johnson, Gov. and Economics



Mrs. Little, Math



Mr. Walker, Science



Mrs. Hunter, Spanish



Mr. Parr, Science



Mrs. Roberts, English



Mrs. Cottle, Business

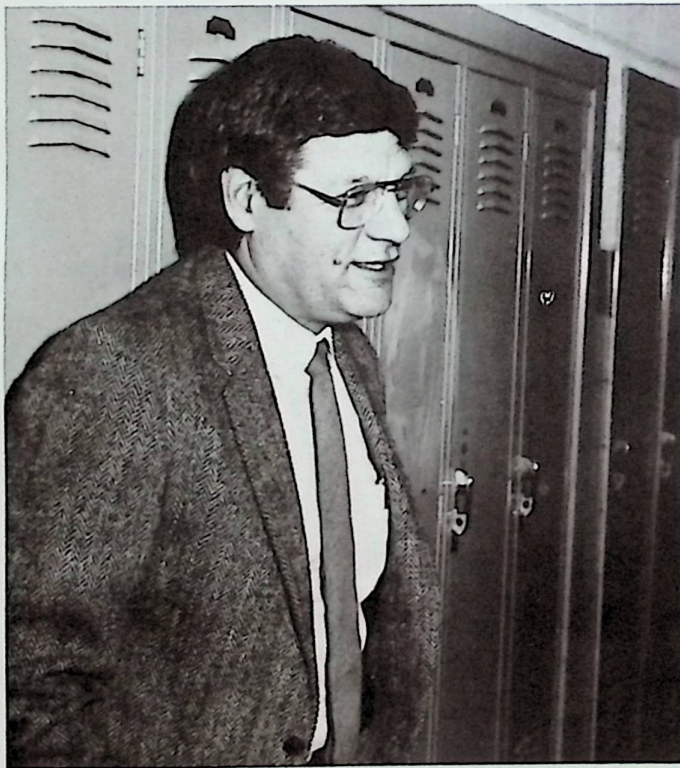


Mrs. Beaumont, History and Latin

ADMINISTRATION



SCHOOL BOARD - Mr. Locher, Dr. McCleese, Mr. Craft, Mrs. Kowalchuk, Mr. Harris



SUPERINTENDENT
Mr. Hiram W. Lynch



PRINCIPAL
Mr. Charles Adams

STAFF



Mrs. Buckle - Treasurer



Mrs. Applegate - Secretary



Mrs. Trapp - Secretary



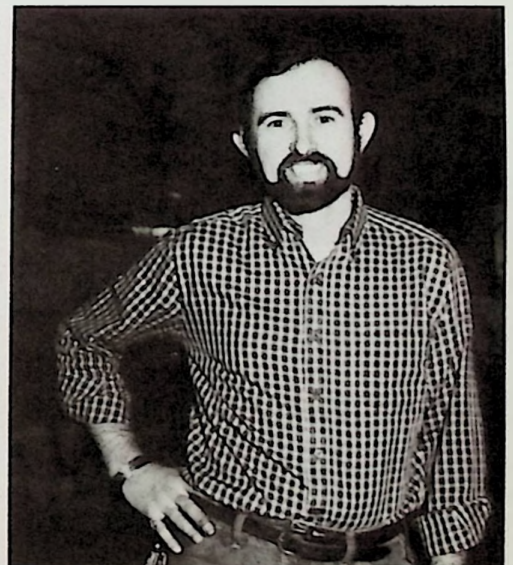
Mrs. Locher, Mrs. Ashmore, Mrs. Shoemaker - Cooks



Mrs. Eshem - Aide



Mr. Canter, Mr. Burchett - Custodians



Mr. Turner - Custodian

HONORS



Miami University Junior Scholars Scholarship - Angel Scaggs



Senior Mentor Program Participants - Lavonne Mosley, Lisa Leive



Candystripers - Tonya Daniels, Naele Horsley, Kerry Parr, Traci Blevins, Kasey Bertram



ROTARY CLUB PARTICIPANTS - Angle Craft, Kim Martin, Ed Lynch, Cheryl Glenn, Jill Wilson



MIDWEST TALENT SEARCH - James Myers, Joseph Englebrecht, Michael Kongos



BUCKEYE GIRLS' STATE - Noelle Horsley



DAR Representative - Anglea Horsley



NEDT TEST CERTIFICATE OF EDUCATIONAL DEVELOPMENT - Jackie Weber, Shella Skaggs, Jon Beegan, Dawn Horton, Jennifer Goodballet, Cindy Powell, Alicia Kowalchuk



Ohio Board of Regents Certificate of Achievement - Lavonne Mosley, Angie Craft, Jill Wilson, Kim Martin, Lisa Leive



TYPING CONTESTANTS - Harry Gulley, Lisa Leive Lisa placed 1st in the county in typing I with a speed of 60.2 words per minute.



ROTARY CLUB CAMP ENTERPRISE - Traci Steele, John Hemmings, Mark Blevins, Missy Franklin



ROTARY CLUB AWARD OF DISTINCTION - John Parr, Ed Lynch, Lavonne Mosley



WSAZ "Best of the Class" Lisa Leive, Ed Lynch, Lavonne Mosley



JUNIOR HONORS PROGRAM - Jill Hauth, Tony Moritz



Group W Cable Honors Participant - Jill Wilson

SCHOLARSHIP TEAMS



SPANISH II - Shella Skaggs, Kim Penix, Vanda Gray, Barbie Martin



ENGLISH III - Jill Hauth, Brian Ratliff, Noelle Horsley, Kelly Platt



SPANISH I - Cindy Elliott, Marc Cottle, Lisa Mingus
PHYSICS - Ed Lunch



ENGLISH I - Dawn Horton, Danny DeLotell, Sheryl Davis, Jackie Weber
CHEMISTRY - Harry Gulley



GENERAL SCIENCE - Brent Conley



BIOLOGY - Brian Bloomfield



ALGEBRA II - Jon Beegan

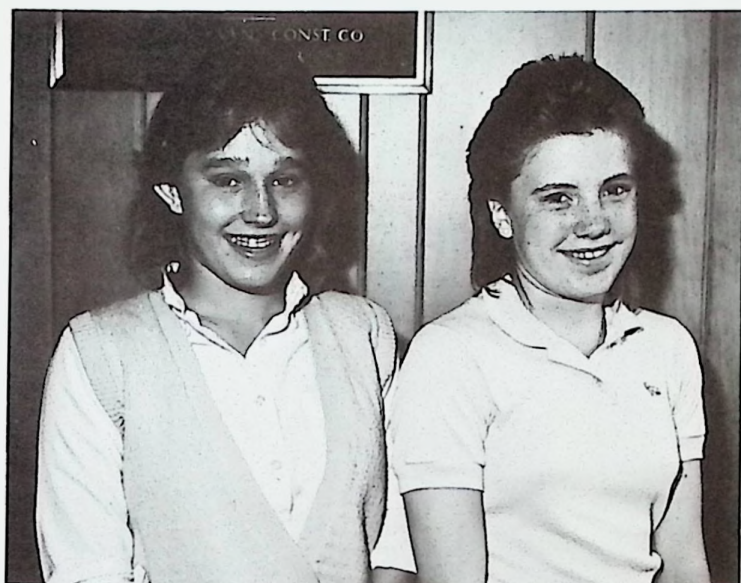




ENGLISH II - Alicia Kowalchuk, Jennifer Goodballet



GEOMETRY - Angel Scaggs, Mark Blevins, Mykal Riddlebarger, Tony Mortiz, Kim Penwell



ALGEBRA I - Cindi Powell, Sheri Sowards



ENGLISH IV - Lavonne Mosley, Cheryl Glenn, Lisa Lelve, Kim Martin, Jill Wilson

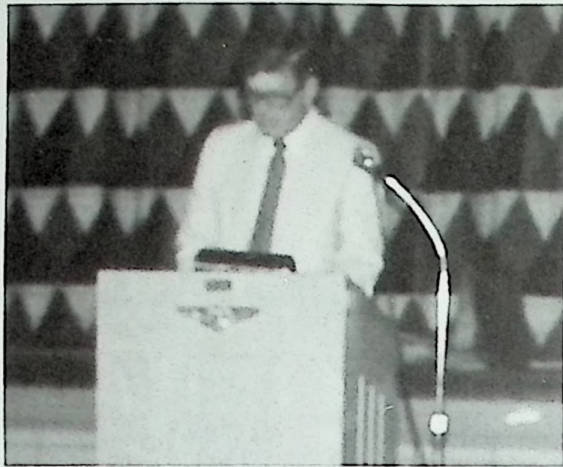


GOVERNMENT - John Parr, Angelo Horsley, Steve McCain

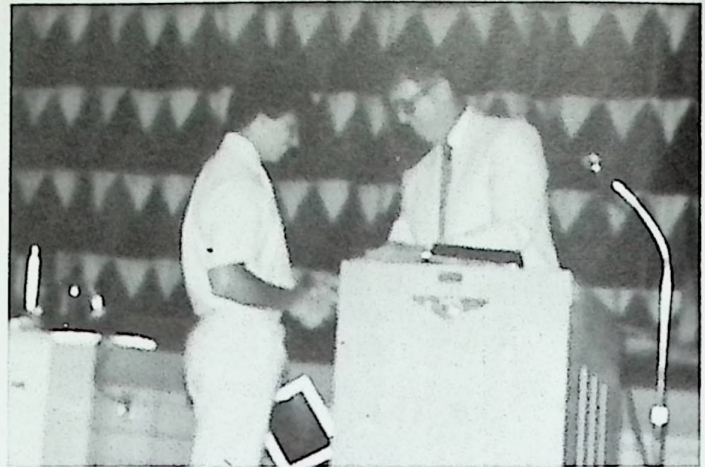


AMERICAN HISTORY - John Hemmings, Kathy Sanders, Traci Steele, Tina Payne

SPORTS AWARDS BANQUET



Mr. Leightenheimer



Mark Trapp Receives SOC ALL STAR Award



Mrs. Trapp presents cheerleader awards



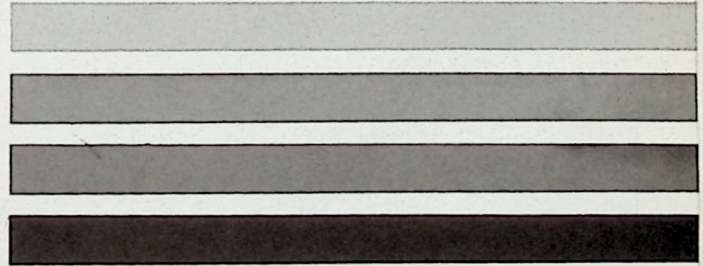
Mrs. Vice presents softball awards



Mr. McCleese presents basketball awards



Miss Boldman presents basketball awards



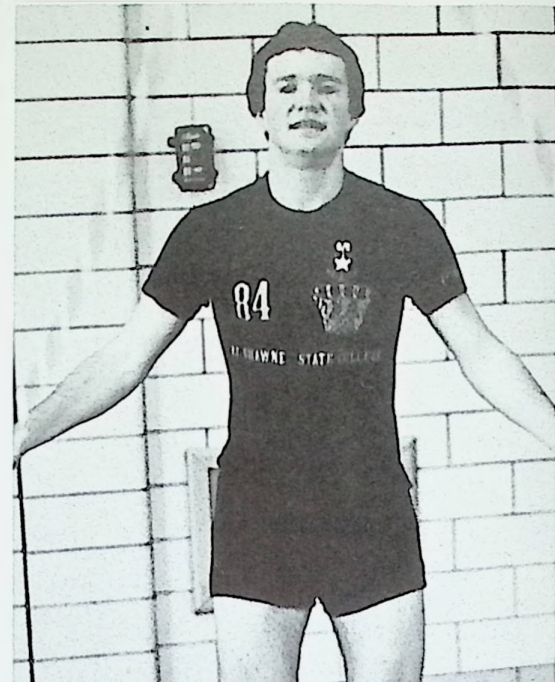
JUMP FOR YOUR HEART



Mindy Powell



DJ, Richard and John



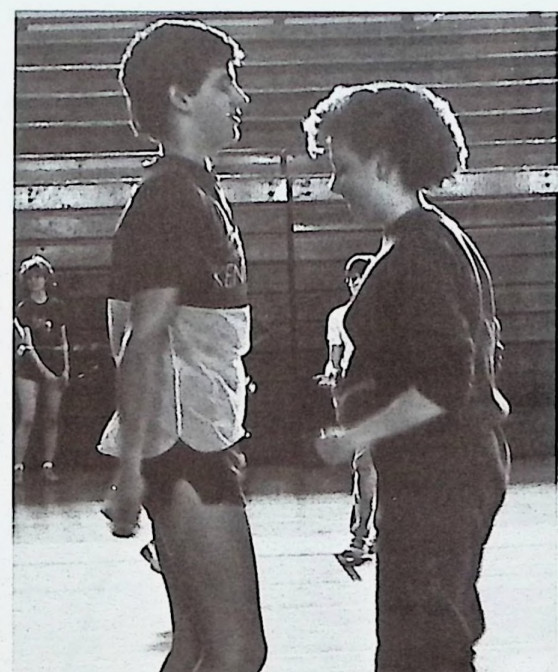
Tony Moritz



Laura Minch



Noelle Horsley



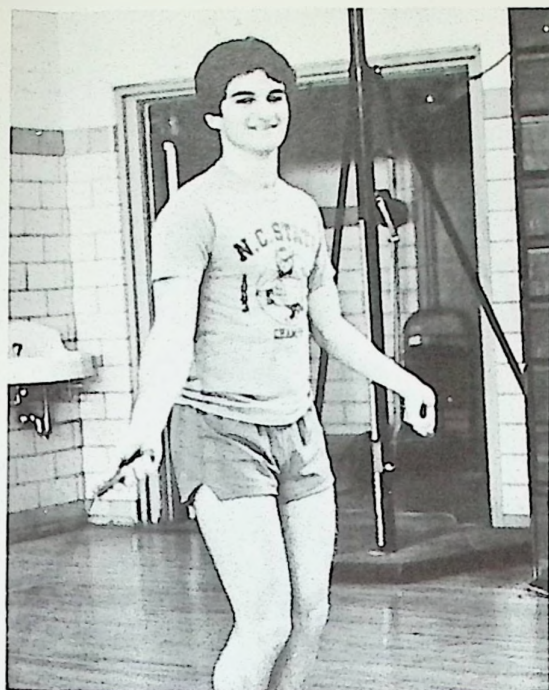
Jim Vastine and Kierstyn Canter



Jump For Your Heart A Big Success . . .

On March 16, 1985 Jump Rope For Your Heart was held in the Clay High School gymnasium. Over 100 students and faculty members jumped rope in 6 member teams for 3 hours to benefit the research in the fight against heart disease. The goal for this years jump-a-thon was \$2,500. When all the money was collected from sponsors the total was over the goal. Prizes were awarded for bringing in the most money. The prize winners in the High School were Toni Burchett (\$64.80), Mary Obertling (\$63.55), Tabby Whisman (\$52.20) and Beth Atkins (\$34.90). The prize winners in Junior High were Angie Whitley (\$334.40), Mike Eldridge (\$117.00), Lisa Montgomery (\$109.00), and Rhonda Slone (\$100.08), Jim Myers (\$73.80) and Ricky Eastwood (\$70.20). All the people who turned in over \$10.00 received patches. Terri Boldman and Dave Leightenheimer would like to thank all who participated or sponsored a jumper in this years event.

Traci Blevins



Marc Cottle



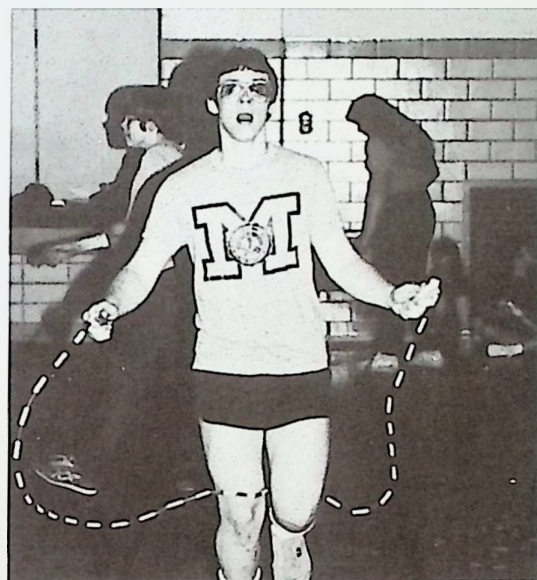
Tiffany and Teresa



Steve Harris



Tammy Curnutte



Dwayne Kongos



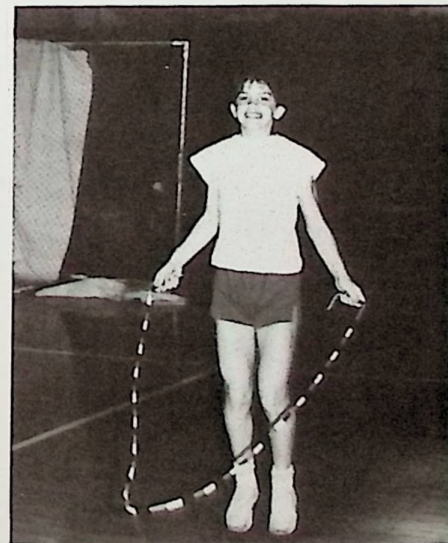
Brooke Bertram



Sara Wilson, Lisa Deltchel



Jay Prosch



Elizabeth Blevins

Science Club



First Row - Jill Wilson, Steve Adams, Mark Trapp Second Row - Sally Eshem, Steve Burke, Shaine Sullivan, Karen Adams, Kelly Platt, Steve McCain, Mr. Walker, Advisor Third Row: Cheryl Glenn, Lisa Lelve, Angie

Craft, Angela Horsley, Jim Vostine Fourth Row: Herman Patrick, Sheila Montgomery, Garry Sexton, Mike Warner, Fred Lester



JUNIOR HIGH SCIENCE FAIR WINNERS

First Row: Sharl Cord, Mindy Powell, Laura Minch, Tina Murta Second Row: Chris Brown, Dwayne Kongos, Joseph Englebrecht, Ashley McGlane, Aaron Ginn



HIGH SCHOOL SCIENCE FAIR WINNERS

First Row: LaVonne Mosley, Jill Keaton, Cindy Powell, Jennifer Marsh, Jackie Weber, Second Row: Kim Penwell, Kim Martin, Shaine Sullivan, Noelle Horsley, Tony Moritz, Cheryl Glenn, Alicia Kowalchuk Third Row: John Parr, John Hemmings

JUNIOR HIGH SCIENCE FAIR

Grand Award - Ashley McGlane
Physical Science - 1st Joseph Englebrecht
2nd Tina Murta
Earth Science - 1st Chris Brown
2nd Mindy Powell and Laura Minch
Biology - 1st Sharl Cord and Traci Erwin
2nd Aaron Ginn
Dwayne Kongos

HIGH SCHOOL SCIENCE FAIR

Grand Award - Noelle Horsley
Earth Science - 1st Tony Moritz
2nd Darby Gable
Physical Science - 1st John Parr
2nd Shaine Sullivan
3rd LaVonne Mosley
4th John Hemmings
5th Cheryl Glenn
6th Alicia Kowalchuk
Biology - 1st Jennifer Marsh
2nd Jackie Weber
3rd Cindy Powell
4th Jill Keaton
5th Buck Applegate
6th Nicole LaNier
Honorable Mention - Kim Penwell, Shannon Bare, Kim Martin
Athens Regional Science Fair Excellent Rating - John Parr

Yearbook Staff



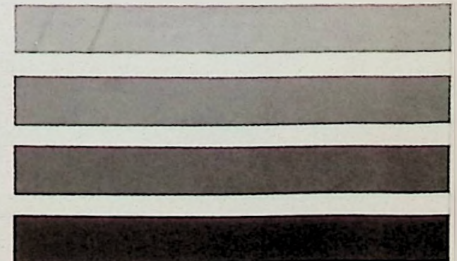
EDITORIAL STAFF - FIRST ROW: Traci Blevins, Leighanne Conley, Michelle Hinker **SECOND ROW:** Kelly Platt, Lisa Brush, Julie Rowson, Lavonne Mosley, Miss Moore **THIRD ROW:** Angle

Horsley, Cheryl Glenn, Almee Davis, Sally Day, Noelle Horsley, Susie LeMaster



SALES STAFF - FIRST ROW: Jill Hauth, Almee Davis, Amy Noel **SECOND ROW:** Cindy Elliott, Teresa Platt, Lisa Mingus, Lisa Broughton, Miss Moore **THIRD ROW:** Steve McCain, Louvenna

Campbell, Jill Wilson, Amy Lutz, Michele Turner, Tina Melvin, Paulo Pelfrey



Library Staff



FIRST ROW: Kim Martin, Mrs. Parkes, Angel Scaggs, Steve Adams, Kim Gearhart SECOND ROW: Spencer Swayne, Mike Warner, Jim Vastine, Steve McCain, Jon Beegan, John Parr

Office Staff



FIRST ROW: Jill Hauth, Susie LeMaster, Leighanne Conley, Lisa Mingus, Amy Noel SECOND ROW: Koren Adams, Missy Franklin, Kelly Platt, Sally Day, Angie Craft, Michelle Turner

Quiz Bowl



FIRST ROW: Kim Martin, Lavonne Mosley, Ed Lynch, Jill Wilson, Lisa Lelve, Angle Craft SECOND ROW: Darin Miller, Noelle Horsley, Garry Sexton, Klerstyn Canter, Shalne Sullivan, Dawn

Horton, Jackie Weber, Alida Kowalchuk, Tammy Swords, Mrs. Roberts

FTA



FIRST ROW: Kim Martin, Cheryl Glenn, Jill Wilson, Angle Craft, Leighanne Conley, Noelle Horsley, Kelly Platt, Angle Broughton, Kim Gearheart, Lavonne Mosley, Jill Hauth

National Honor Society



FIRST ROW: Lisa Lelve, Jill Wilson, Lavonne Mosley, Angle Craft
SECOND ROW: Ed Lynch, Jill Hauth, Angel Scaggs,

Mr. Parr THIRD ROW: Noelle Horsley, Tony Moritz, Darin Miller



National Honor Society Induction



Jill Hauth



Ed Lynch



Darin Miller



Tony Moritz

FHA



Michelle Kinker, Jackie Weber, Lisa Schlitz, Dawn Horton, Jenny Pridemore, Traci Blevins, Sally Eshem, Kerry Parr, Cindy Elliott



FIRST ROW: Tony Robinson, Lori Picklesimer, D. J. Church SECOND ROW: Melissa Scoff, Valerie Gardner, Jill Keaton, Julie Mays, Julie Howell



FIRST ROW: Steve McCain, Angie Broughton, Steve Adams, Kim Gearheart
SECOND ROW: Rhonda Bailey, Sandy Charles, Jeff Davis, Sheila Montgomery, Bobbi Turner



FIRST ROW: Tino Melvin, Lisa Broughton, Beth Atkins, Susie Scott
SECOND ROW: Louvenna Campbell, Crystal Myers, Lisa Brush, Paula Pelfrey, Michelle Turner, Cheri Curnutte



FIRST ROW: Teresa Platt, Donna Fannin, Tracy Colegrove
SECOND ROW: Laura Skaggs, Donna Bloomfield, Toni Burchett, Lisa Webb, Tonya Daniels, Michelle McGowan, Jackie Crabtree, Kasey Bertram, Gina Dyer, Rhonda Newman

Spanish Club



FIRST ROW: Shaine Sullivan, Jon Beegan, John Ricks, Spencer Wayne, Mrs. Hunter SECOND ROW: Kelly Warner, Tommy Swords, Kim Penix, Sheila Skaggs, Barble Martin, Vonda Gray, Jenny Pridemore, Lisa Schlitz, Bobbi Turner THIRD ROW: Bucky Applegate, Steve Dransfield, Gina Dyer, Julie Mays, Angela Palmer, Laura Skaggs, Michelle Kinker, Lisa Mingus, Cindy Elliott, Sally Eshem FOURTH ROW: Aaron Williams, Steve Delotelle, Jennifer Marsh, Cindy Powell, Lisa Webb, Danny

Delotelle, Benji Wiget, Jason Gearheart, Rhonda Hunter, Gretchen Haffner FIFTH ROW: Brian Montgomery, Chris Swayne, John Eldridge, Donna Fannin, Jill Keaton, Lori Picklesimer, Tracy Colegrove, Toni Burchett SIXTH ROW: Jeff Adkins, John Terry, Marc Cottle, Chris Burton, Sean Kelly, Dickie Chaffin SEVENTH ROW: Brent Conley, Herman Patrick, Mike Plummer, Brent Kimbler, Craig Gearheart

Latin Club



FIRST ROW: Jeff Lewis, Traci Blevins, Jennifer Goodballet, Kierstyn Canter, Alicia Kowalchuk, SECOND ROW: Jackie

Weber, Sheri Swords, Dawn Horton, Tina Payne, Mrs. Beaumont

CHORALIERS



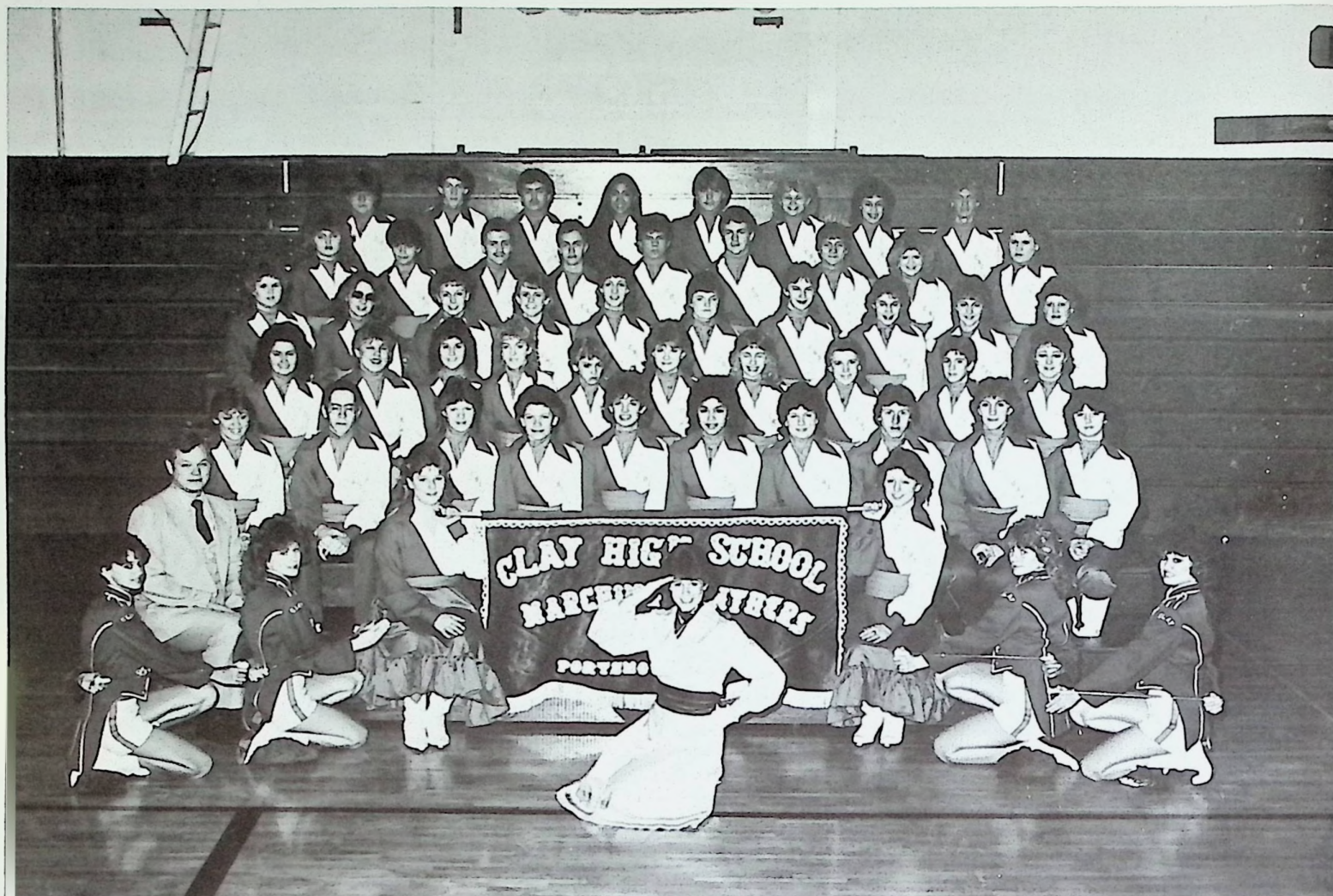
FIRST ROW: Angie Horsley, Almee Davis, Leighanne Conley, Lisa Mingus
SECOND ROW: Cheryl Glenn, Susie LeMaster, Angel Scaggs, Kathy Sanders,

Amy Lutz THIRD ROW: Steve Burke, Noelle Horsley, Jill Wilson, Terry Craft,
Ed Lynch, Steve Harris, Fred Lester



Mrs. Leightenheimer directs the Choraliers at the Christmas Concert.

BAND



Field Commander Almee Davis, Majorettes Lisa Broughton, Amy Lutz, Lisa Mingus, Kim Gearheart, Banner Carriers, Sheri Hamilton, Susie Lemaster Director, Mr. Steve Fields FIRST ROW: Amy Noel, John Parr, Lisa Lelve, Cheryl Glenn, Jill Wilson, Angie Horsley, Lavonne Mosley, Steve Adams, Kelly Platt, Missy Franklin SECOND ROW: Bobbie Turner, Michelle Taylor, Kathy Sanders, Sheila Montgomery, Gretchen Haffner, Rhonda Hunter, Angela Palmer, Sheri Sowards, Kerry Parr, Michele Turner THIRD ROW: Jackie Crabtree, Alicia

Kowalchuk, Kierstyn Canter, Vonda Gray, Jennifer Goodballet, Michelle McGowan, Jennifer Marsh, Cindy Powell, Teresa Platt, Kasey Bertram FOURTH ROW: Tonya Daniels, Jackie Weber, Steve Burke, Shaine Sullivan, Benji Wiget, Tim Malone, John Aicks, Crystal Myers, Cindy Elliott FIFTH ROW: Jay Winters, Brian Montgomery, Steve Harris, Noelle Horsley, Jeff Davis, Michelle Kinker, Traci Blevins, Brent Kimbler



BRASS CHOIR - FIRST ROW: Lisa Lelve, Jennifer Marsh, Gretchen Haffner, Jill Wilson, Almee Davis SECOND ROW: Noelle

Horsley, Tim Malone, Benji Wiget, John Parr THIRD ROW: Steve Burke, Steve Adams



BAND COUNCIL - (Clockwise) Angie Horsley, Jill Wilson, Traci Blevins, Jennifer Goodballet, Sheri Hamilton, Susie LeMaster, Kim Gearheart, Noelle Horsley



PEP BAND - FIRST ROW: Lisa Lelve, Cheryl Glenn, Susie LeMaster, Lavonne Mosley SECOND ROW: Cindy Powell, Jennifer Marsh, Kerry Parr, Angle Palmer, Sheri Sowards, Traci Blevins THIRD ROW: Alicia Kowalchuk, Vonda Gray, Gretchen Haffner, Michelle Taylor FOURTH ROW: Kathy Sanders,

Shella Montgomery, Almee Davis, Shalne Sullivan FIFTH ROW: Benji Wiget, Steve Adams, Heath Pack, Brent Kimbler SIXTH ROW: John Parr SEVENTH ROW: Steve Burke, Steve Harris



JAZZ BAND - FIRST ROW: Jill Wilson, Alicia Kowalchuk, Kim Martin, Cheryl Glenn, Brent Kimbler, John Aicks, Angle Horsley SECOND ROW: Traci Blevins, Gretchen Hoffner, John Parr, Tim Malone THIRD ROW: Steve Harris,

Almee Davis, Susie LeMaster, Brian Montgomery, Shalne Sullivan, Steve Adams, Lisa Lelve, Angle Craft, Jennifer Marsh, Kathy Sanders, Benji Wiget, Steve Burke

BAND FRONTS

FLAG CORPS



FIRST ROW: Kasey Bertram SECOND ROW: Michele Turner, Missy Franklin, Bobbi Turner, Amy Noel THIRD ROW: Jackie Crabtree, Cindy Elliott, Tonya Daniels



BANNER CARRIERS: Sheri Hamilton and Susie LeMaster



FIELD COMMANDER: Almee Davis

MAJORETTES



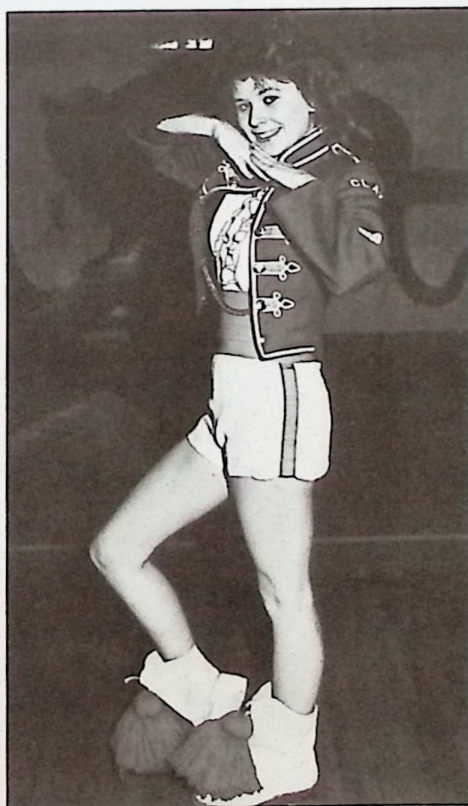
FIRST ROW: Lisa Broughton, Kim Gearheart SECOND ROW: Lisa Mingus, Amy Lutz



Kim Gearheart



Lisa Mingus



Amy Lutz



Lisa Broughton

Cheerleaders



FIRST ROW: Kelly Warner, Lori Picklesimer, Jennifer Goodballet, Klerstyn Canter, Jackie Weber, Teresa Platt SECOND ROW: Susie LeMaster, Liso Mingus, Jill Wilson, Angie Horsley, Sally Day, Noelle Horsley

1984-85 RESERVE CHEERLEADERS



FIRST ROW: Kelly Warner, Lori Picklesimer, Teresa Platt SECOND ROW: Jackie Weber, Jennifer Goodballet, Klerstyn Canter



1984-85 VARSITY CHEERLEADERS

FIRST ROW: Noelle Horsley, Sally Day, Lisa Mingus SECOND ROW: Angle Horsley, Jill Wilson, Susie LeMaster



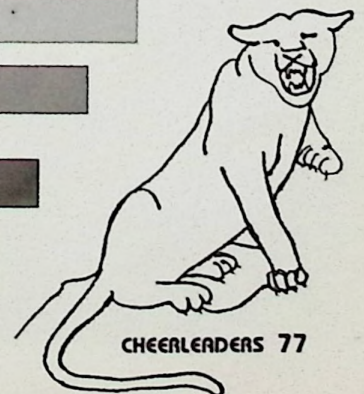
Susie LeMaster



Jill Wilson



Angle Horsley



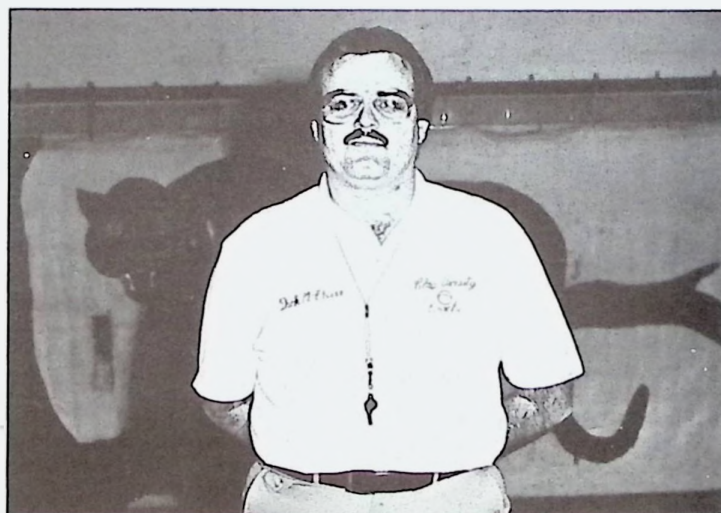
Golf Team



FIRST ROW: Danny DeLotelle, Benji Wiget, Jason Gearheart, Alvon Bramblette SECOND ROW: John Eldridge, Jon Beegon, Spencer Swayne, Mark Trapp, Jim Vastine, Mike Warner, John Ricks, Shaine Sullivan, Tony Moritz



Mike Warner, John Eldridge, Jim Vastine, Spencer Swayne



Dick McCleese, Coach

TOURNAMENTS AND HONORS

SOC Tournament 163

District Tournament 354

Spencer Swayne was runner-up medalist in the SOC, won the low medalist honor at the district tournament and came in 11th place out of 43 at the state tournament.

SCORE BOX

| CLAY | OPPONENTS |
|------|------------------------|
| 175 | Wellston 253 |
| | Chesapeake 194 |
| 163 | Portsmouth East 197 |
| | Wheelerburg 181 |
| 166 | Huntington Ross 184 |
| 183 | Wheelerburg 197 |
| | Manchester 189 |
| 175 | Fairland 175 |
| | South Point 179 |
| | Huntington St. Joe 205 |
| 176 | Portsmouth East 199 |
| | Peebles 237 |
| 192 | Huntington Ross 202 |
| | Wellston 246 |

| CLAY | OPPONENTS |
|------|---------------------------------|
| 182 | Portsmouth West 163 |
| | Minford 177 |
| 179 | Peebles 197 |
| | Leesburg Fairfield 191 |
| | Manchester 179 |
| | Eastern Brown 218 |
| 179 | Valley 190 |
| 170 | Minford 161 |
| | Valley 178 |
| | Portsmouth East 197 |
| 197 | Portsmouth West 169 |
| 165 | Valley 186 |
| | Season Record: 38 Wins 8 Losses |



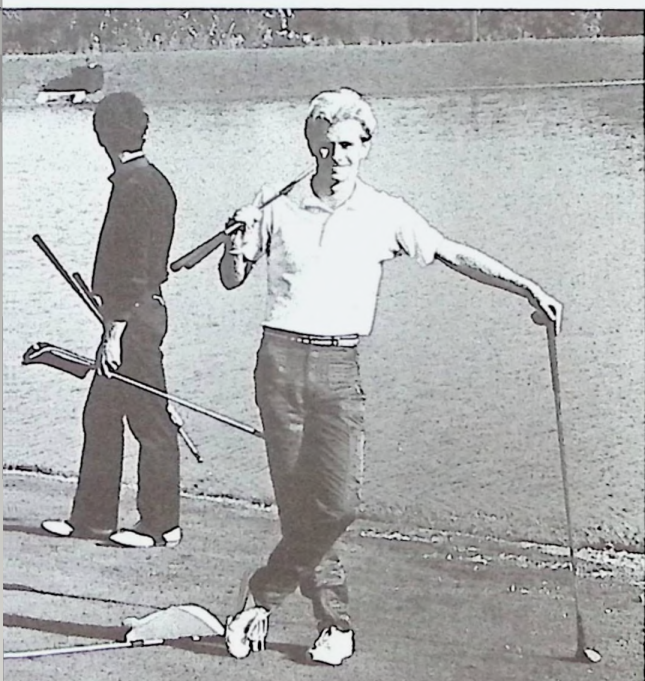
Benji Wiget



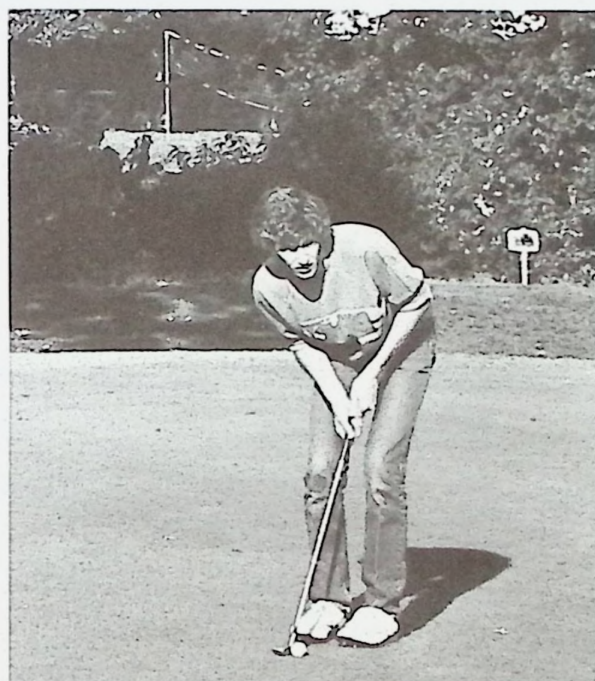
Spencer Swayne



Mark Trapp



Mike Warner: "ANYONE HAVE A FISHING POLE?"



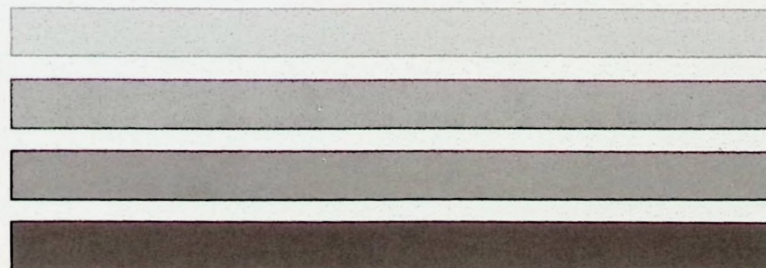
Jim Vastine



Shaine Sullivan and Jon Beegan



John Eldridge



Tournament Victory Highlights



FIRST ROW: Crystal Myers, Lisa Webb, Andy Powell, Jill Keaton, Cheryl Glenn, Lisa Lelve, Jody Burgess, Sally Day
SECOND ROW: Mrs. Vice, Coach, Noelle

Horsley, Angle Craft, Jennifer Goodballet, Karen Adams, Angle Horsley, Jill Wilson, Susan Conley Not pictured: Mykal Riddlebarger, Julie Phipps

TEAMWORK KEY TO SUCCESS

The volleyball team had a very successful season in 1984. The varsity set a school record in season play going undefeated. The only loss was in the district finals to Bishop Flaget. The season ended with a 20-1 record overall and an S.O.C. Championship with a record of 12-0.

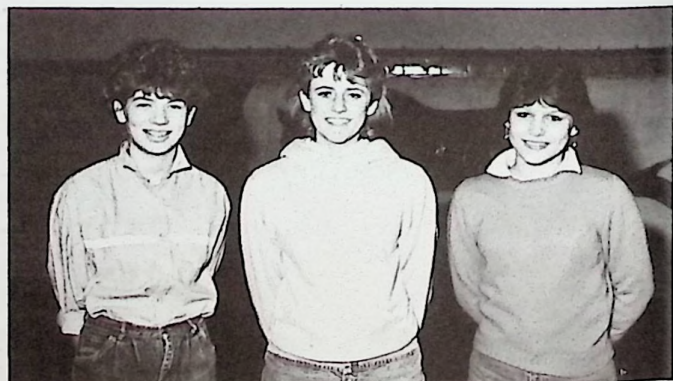
The reserve team had an exceptional season also. Their only loss was to South Webster making their overall record 17-1 for the season.

I would like to say that out of my three years as volleyball coach the 1984 squad was the most successful because of the self-discipline, enthusiasm, team spirit, coachability and dedication of the girls themselves. Without these qualities, our season would not have been successful.

Coach Carol Vice

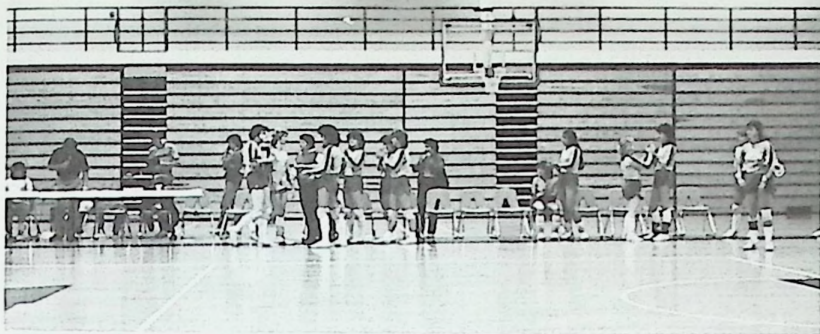
| RESERVE | SCOREBOARD | | VARSITY | |
|------------------|------------|------|------------|------|
| | We | They | We | They |
| Green | W | L | W | L |
| New Boston | W | L | W | L |
| Notre Dame | W | L | W | L |
| Portsmouth | W | L | W | L |
| S. Webster | W | L | W | L |
| Ports. West | W | L | W | L |
| Ports. East | W | L | W | L |
| Eastern | W | L | W | L |
| Ports. West | W | L | W | L |
| Northwest | W | L | W | L |
| Green | W | L | W | L |
| New Boston | W | L | W | L |
| Notre Dame | W | L | W | L |
| Valley | W | L | W | L |
| S. Webster | L | W | W | L |
| Portsmouth | W | L | W | L |
| Ports. East | W | L | W | L |
| Eastern | W | L | W | L |
| Record | 17 | 1 | (SOC*) | |
| | | | 12-0 (SOC) | |
| | | | SOC Champs | |
| TOURNAMENT | | | | |
| Sectional: | | | | |
| Clay | | | 15 | 15 |
| So. Eastern Ross | | | 8 | 8 |
| District: | | | | |
| Clay | | | 15 | 15 |
| Eastern | | | 12 | 12 |
| District Finals: | | | | |
| Bishop Flaget | | | 15 | 16 |
| Clay | | | 10 | 14 |

HONORS
S.O.C. CHAMPS 12-0
OVERALL RECORD 20-1
DIVISION 1 S.O.C. First Team:
Karen Adams, and Angle Craft
DIVISION 1 S.O.C. Second Team:
Susan Conley
DIVISION 1 Coach of the Year
Carol Vice



Sara Wilson, Vonda Gray, Tammy Phipps MANAGERS - Tammy Phipps, Sara Wilson STATISTICIANS - Vonda Gray, Sheryl Davis

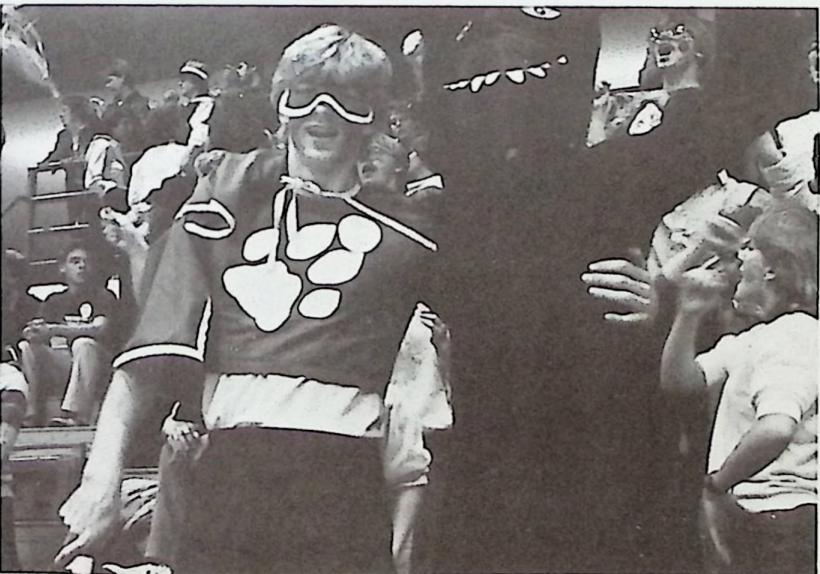
Volleyball Season



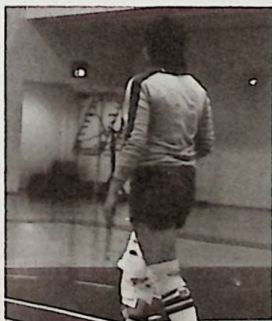
Karen Adams and Angie Craft accept District Runner-up Tournament trophy.



Karen Adams makes 'em eat it!



Captain Panther rides again!



Spirited spectators cheer for the team



Tournament action



Susan and Cheryl in action

HIGHLIGHTS OF CLAY'S



First row: Chris Delabor, Chris Swayne, Darren Allard, Neil Clark, Chris Seagraves, Dale Engle, Dan Kelly, Ricky Rowe, Brent Kimbler, Terry Locher
Second Row: Mr. Brad Bauer, Coach, Mike Plummer, D.J. Church, Tim Malone,

Ed Lynch, David Braden, Herman Patrick, Steve McCain, Greg Ruby, Lorry McDaniels, Dickie Chaffin, Mr. Roberts



SOCCER STAFF: Sally Day, Statistician, Mr. Brad Bauer, Coach, Mr. Roberts, Assistant, Nicole LaNier, Statistician

FIRST SOCCER TEAM



Brent Kimbler



Steve McCain



Greg Ruby



DJ Church and David Braden



David Braden and Ed Lynch



Chris Swayne



Herman Patrick and Chris Swayne

BOYS VARSITY BASKETBALL



First Row: Mark Trapp, Mike Warner, Herman Patrick, Tony Moritz, Mark Blevins Second Row: Jon Beegan, Brian Montgomery, Terry Craft, Jim Vastine, Brian Ratliff, Greg Ruby, Coach Dick McCleese

SCORE BOX

| | | | | |
|------|---------------|-----------------|----|---|
| Clay | 51 | Valley | 84 | L |
| Clay | 47 | Northwest | 72 | L |
| Clay | 41 | Western | 42 | L |
| Clay | 53 | Minford | 71 | L |
| Clay | 62 | New Boston | 63 | L |
| Clay | 63 | Notre Dame | 59 | W |
| Clay | 47 | South Webster | 55 | L |
| Clay | 45 | Green | 51 | L |
| Clay | 48 | Peebles | 67 | L |
| Clay | 65 | Ironton St. Joe | 59 | W |
| Clay | 33 | Green | 65 | L |
| Clay | 54 | New Boston | 70 | L |
| Clay | 53 | Eastern | 80 | L |
| Clay | 53 | South Webster | 72 | L |
| Clay | 67 | Portsmouth East | 61 | W |
| Clay | 51 | Eastern | 66 | L |
| Clay | 68 | Portsmouth East | 95 | L |
| Clay | 51 | Valley | 77 | L |
| Clay | 62 | Ironton St. Joe | 43 | L |
| Clay | 52 | Notre Dame | 71 | L |
| Clay | 52 | New Boston | 57 | L |

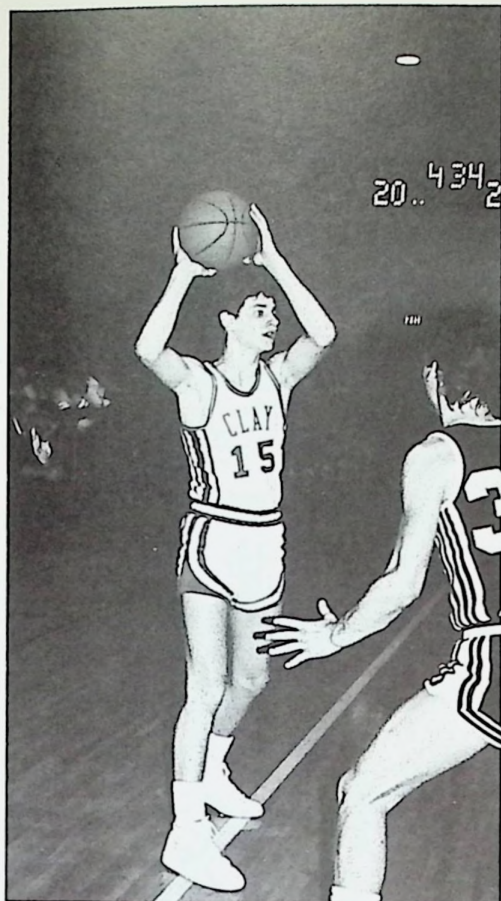
(Tournament)

HONORS

Mark Trapp First Team SOC
Jim Vastine Second Team SOC



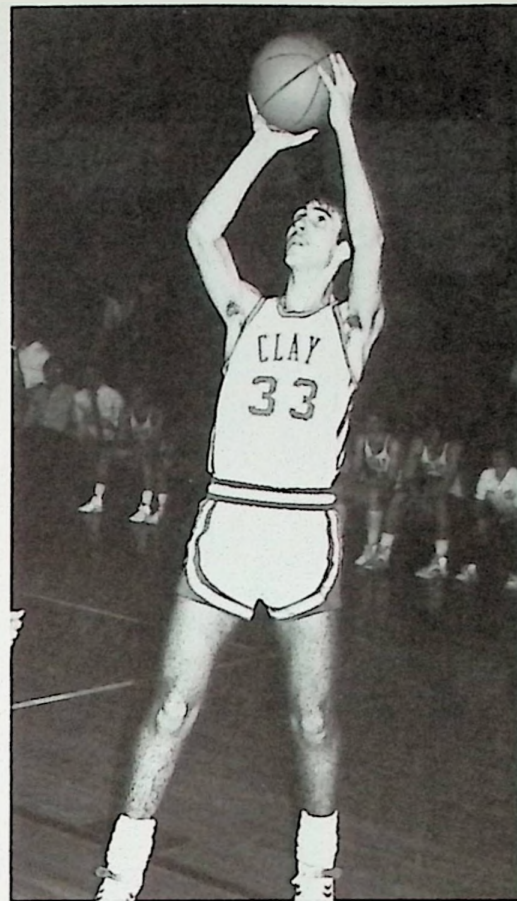
Chris Brown, Manager, Steve Harris, Mike Warner, Terry Craft, Coach McCleese, Jim Vastine, Herman Patrick, Brian Ratliff, Bryan Conley



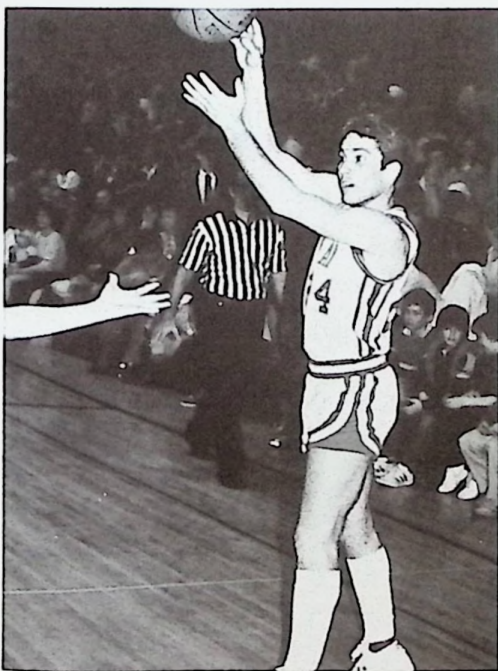
Jim Vastine



Mark Tropp



Terry Craft



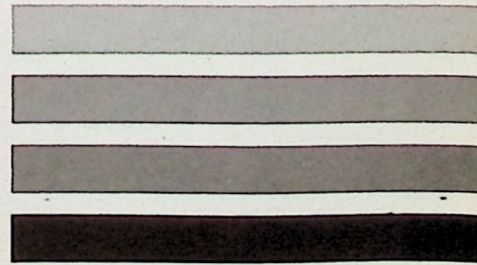
Bryan Conley



Tony Mortiz



Mike Warner



RESERVE BOYS BASKETBALL



FIRST ROW: Steve DeLotell, Jason Gearheart, Benji Wiget, Danny DeLotell, John Eldridge SECOND ROW: Bruce Blevins, Jon Beegan, Marc Cottle, Brian Montgomery, Tony Robinson, John Ricks, Chris Swayne, Greg Ruby, Coach Cayton

SCORE BOX

| | | | |
|------|----|---------------|----|
| Clay | 34 | Valley | 40 |
| Clay | 27 | Northwest | 36 |
| Clay | 31 | Western | 37 |
| Clay | 27 | New Boston | 26 |
| Clay | 43 | Notre Dame | 32 |
| Clay | 39 | South Webster | 21 |
| Clay | 44 | Green | 32 |
| Clay | 32 | Peebles | 46 |
| Clay | 36 | St. Joe | 26 |
| Clay | 39 | Green | 42 |
| Clay | 46 | New Boston | 43 |
| Clay | 44 | Eastern | 34 |
| Clay | 41 | South Webster | 38 |
| Clay | 44 | East | 41 |
| Clay | 50 | Eastern | 42 |
| Clay | 36 | East | 52 |
| Clay | 34 | Valley | 46 |
| Clay | 34 | St. Joe | 33 |
| Clay | 50 | Notre Dame | 48 |

Season Record 12-7

SOC Division I 12-2 League Co-Champions

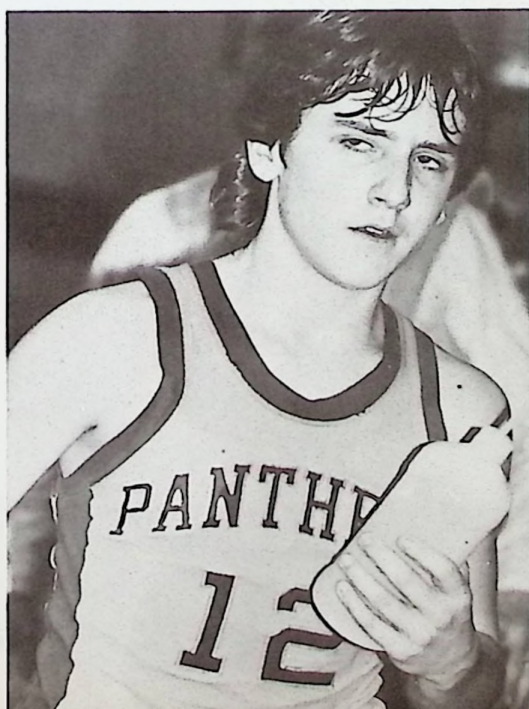


Coach Steve Cayton, Manager Bruce Blevins

CORCHS COMMENT

I feel the 1984-85 Reserve team had a very successful season. By finishing the season with a 12-7 overall record and a 12-2 record in the SOC Division I, I feel we have made the future of basketball here at Clay very bright. Our 12-2 record in the SOC was good enough to make us co-champions along with Portsmouth East. The young men on the team worked extremely hard this year and it has been a real pleasure to coach them. I am looking forward to working with these young men in the future.

Steve Cayton, Coach



GIRLS' VARSITY BASKETBALL



First Row: Missy Franklin, Tabby Whisman, Cheryl Glen, Lisa Lelve Second Row: Nicole Lanier, Angie Craft, Sheri Hamilton, Karen Adams, Noelle Horsley, Susan Conley

COACH'S COMMENT

We had a good season. Our record improved greatly over last year. We finished second against some pretty strong competition in our league. We obviously started playing better team ball since our scoring was a little better balanced. Every team member had better individual statistics over last year. After the Christmas break, we ended with an 11-3 record which shows that we were doing something right. I feel the biggest difference over last season was that the team decided they "wanted to win." Let's keep it rolling in the 85-86 season.

Terrl Boldman, Coach

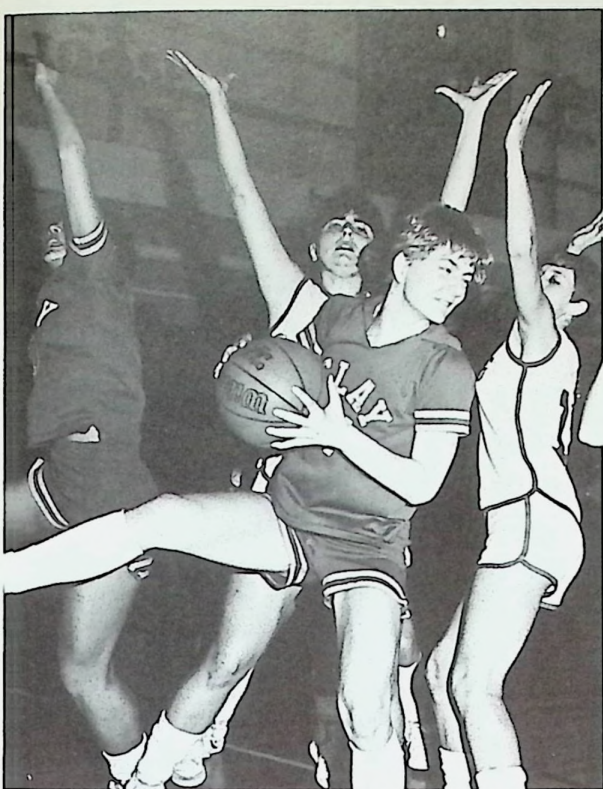
| SCORE BOX | | | |
|------------|-----------------|----|---|
| Clay | Opponent | | |
| Clay 43 | Valley | 61 | L |
| Clay 33 | Northwest | 47 | L |
| Clay 55 | South Point | 39 | W |
| Clay 51 | Minford | 62 | L |
| Clay 51 | New Boston | 48 | W |
| Clay 51 | Notre Dame | 45 | W |
| Clay 38 | South Webster | 61 | L |
| Clay 58 | East | 30 | W |
| Clay 39 | Green | 47 | L |
| Clay 39 | Valley | 33 | W |
| Clay 57 | St. Joe | 48 | W |
| Clay 42 | Green | 38 | W |
| Clay 48 | New Boston | 46 | W |
| Clay 37 | Notre Dame | 35 | W |
| Clay 37 | South Webster | 33 | W |
| Clay 25 | Portsmouth | 64 | L |
| Clay 49 | East | 19 | W |
| Clay 56 | Eastern | 50 | W |
| Clay 48 | Valley | 49 | L |
| Clay 66 | Ironton St. Joe | 48 | W |
| Clay 51 | Eastern | 40 | W |
| Total 14-7 | | | |



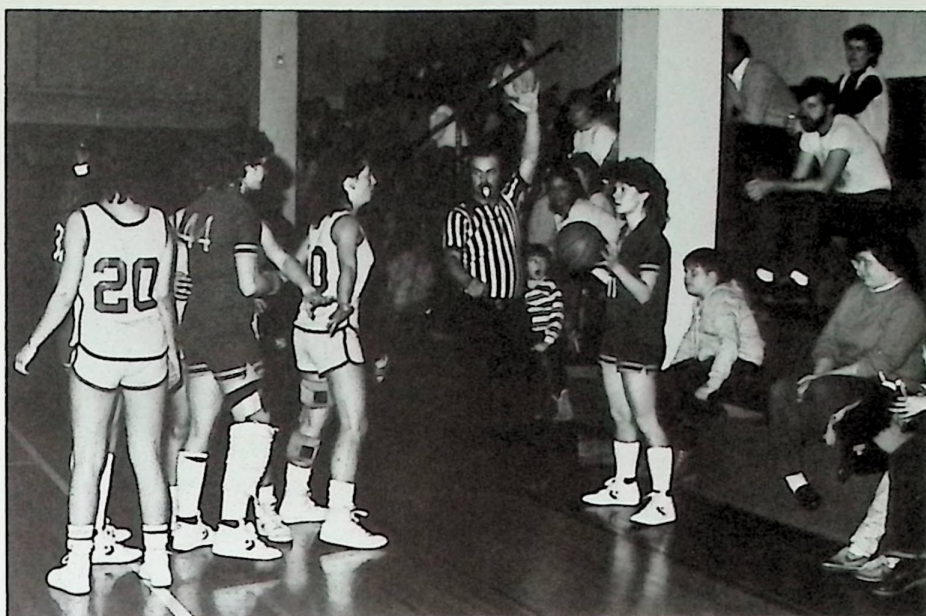
Manager Nicole Lanier
Coach Terry Boldman

HONORS

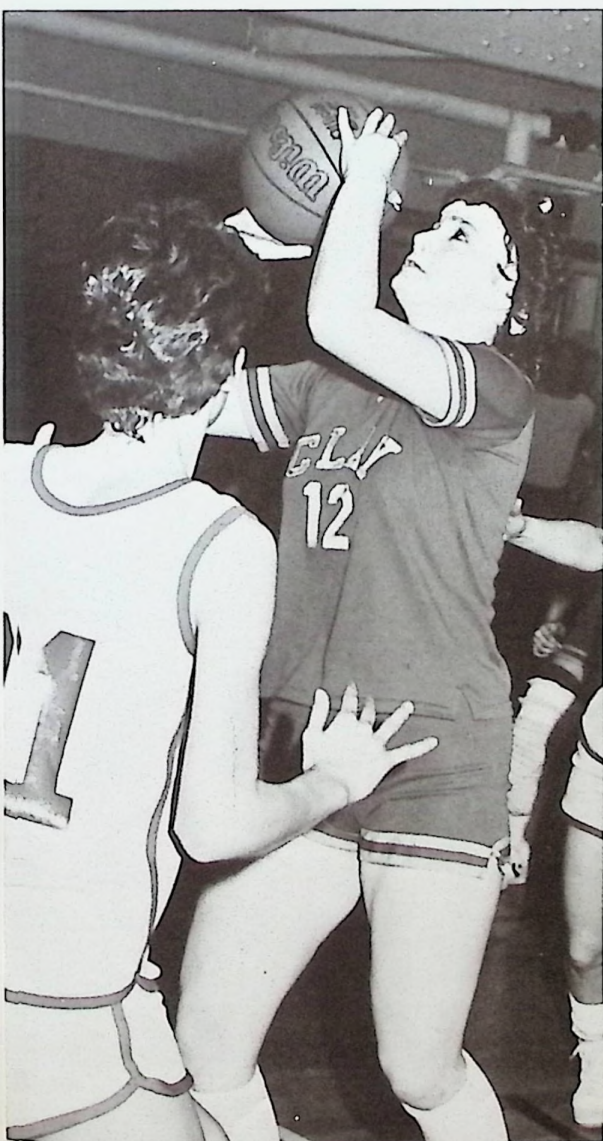
Overall record 14-7
SOC Division I 12-2 (Second Place)
Special Awards:
Rebounds - Karen Adams 12.5/game #2 Scorer 12.2 P.P.G.
Field Goal Percentage - Mykal Riddlebarger - 35%
Free Throw Percentage - Cheryl Glenn - 67%
Assists - Susan Conley - 3.4/game #1 Scorer 13.5 P.P.G.
Steals - Susan Conley - 4.4/game



Angle Craft In action



Lisa Leive



Karen Adams



Tabby, Sheri, Karen and Noelle



Mykal Riddlebarger

Susan Conley

GIRLS' VARSITY BASKETBALL 89

RESERVE GIRLS BASKETBALL



First Row: Crystal Myers, Sheri Sowards, Barbie Martin, Cindy Powell Second Row: Nicole LoNier, Vonda Gray, Lisa Brush, Jennifer Marsh, Tabby Whisman, Coach Terri Boldman

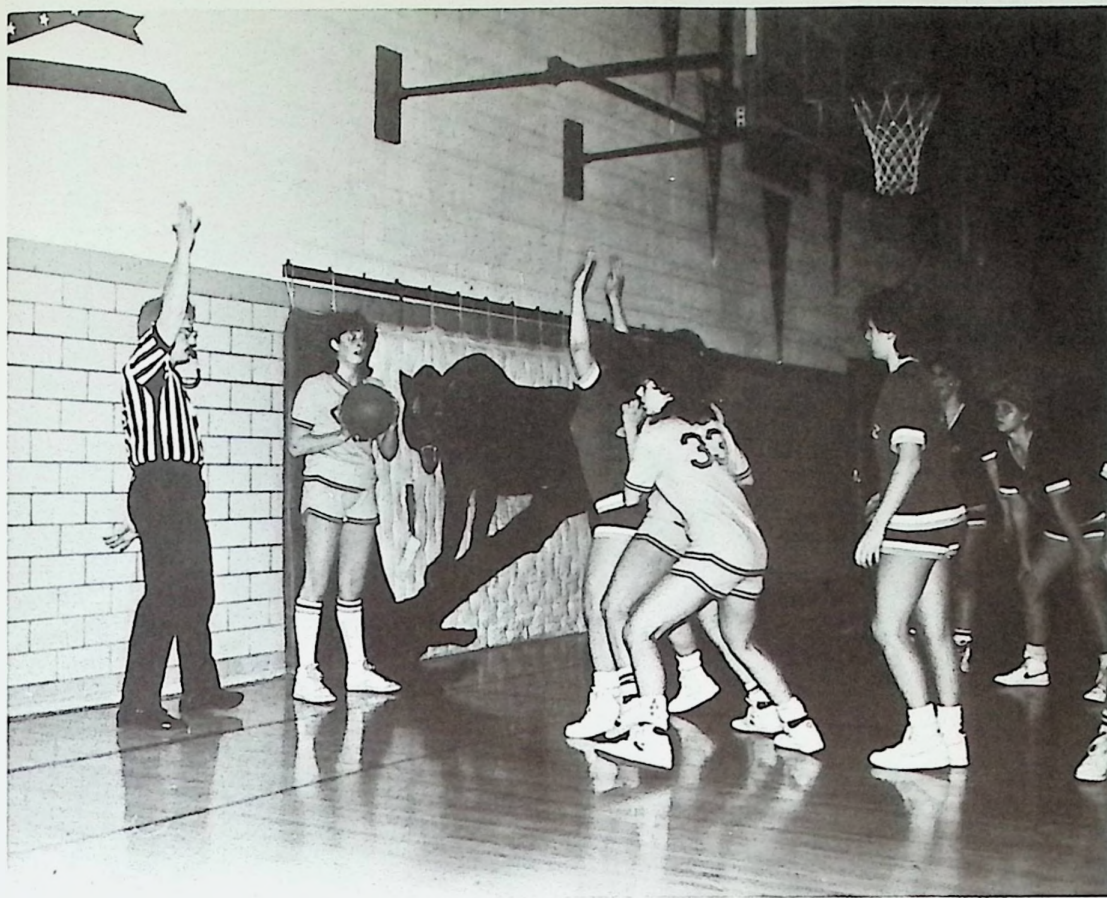
SCORE BOX

| | | | | |
|------|----|-----------------|----|---|
| Clay | 26 | Northwest | 56 | L |
| Clay | 28 | South Point | 23 | W |
| Clay | 19 | Valley | 43 | L |
| Clay | 24 | Notre Dome | 25 | L |
| Clay | 16 | South Webster | 32 | L |
| Clay | 19 | Portsmouth East | 10 | W |
| Clay | 23 | Valley | 30 | L |
| Clay | 16 | Ironton St. Joe | 8 | W |
| Clay | 27 | Notre Dome | 22 | W |
| Clay | 28 | Portsmouth High | 31 | L |
| Clay | 30 | Portsmouth East | 31 | L |
| Clay | 16 | Eastern | 23 | L |
| Clay | 22 | Ironton St. Joe | 13 | W |
| Clay | 30 | Eastern | 27 | W |

COACH'S COMMENT

The reserve girls basketball team had a successful season. We showed improvement in every game. The team had a lot of spirit and worked together well. I look forward to next season and the opportunity to work with these fine players.





SOFTBALL TEAM - SECTIONAL, DISTRICT CHAMPS



First Row: Cheryl Glenn, Susie LeMaster, Vonda Gray, Crystal Myers, Cindy Powell Second Row: Lisa Webb, Dawn Horton, Angle Gardner, Paula Pelfrey, Jill Keaton Third Row: Charlene Kelly, Sheryl Davis, Susan Conley, Mykal Riddlebarger, Karen Adams, Jennifer Goodballet, Angle Craft, Tabby Whisman, Tina Reynolds, Coach Carol Vice



STAFF: Charlene Kelly, Sheryl Davis, Tina Reynolds, Coach Carol Vice



SENIORS: Susie LeMaster, Karen Adams, Angle Craft, Cheryl Glenn

HONORS
First Team, S.O.C.
Susan Conley
Angle Craft
Paula Pelfrey
Coach of the Year
Carol Vice

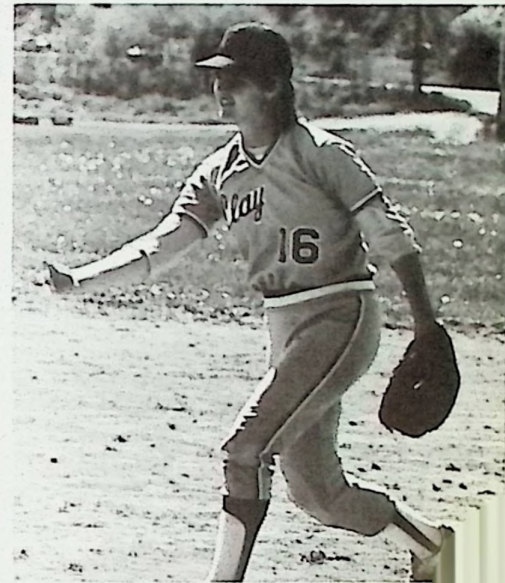
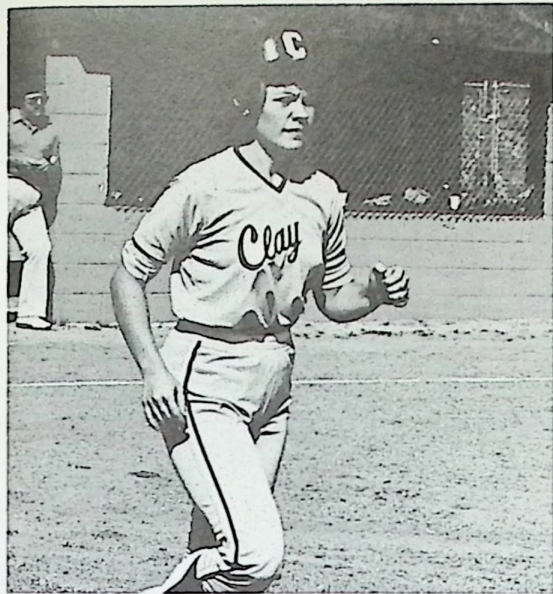
| TOURNAMENTS | | |
|-----------------------|---------|----|
| Clay Tournament: | | |
| Peebles | 4 Clay | 14 |
| Pomroy | 2 Clay | 10 |
| Leesburg Tournament: | | |
| Hillsboro | 1 Clay | 11 |
| Leesburg | 5 Clay | 16 |
| Sectional Tournament: | | |
| Huntington Ross | 0 Clay | 36 |
| Unloto (Finals) | 0 Clay | 20 |
| District Tournament: | | |
| Notre Dame | 1 Clay | 29 |
| Regional Tournament: | | |
| Volley | 3 Clay | 23 |
| Reedsville | 10 Clay | 2 |

| SCORE BOX | | |
|------------------|----|------|
| OPPONENT | WE | THEY |
| Northwest* | 23 | 2 |
| Fairland | 12 | 0 |
| Minford* | 20 | 5 |
| Valley* | 18 | 10 |
| Waverly* | 21 | 3 |
| West | 15 | 2 |
| Westerville So. | 8 | 4 |
| Westerville So. | 5 | 6 |
| East* | 16 | 13 |
| South Webster* | 19 | 1 |
| P.H.S. | 17 | 2 |
| Notre Dame* | 20 | 1 |
| New Boston* | 36 | 0 |
| Ironton St. Joe* | 16 | 7 |
| Eastern* | 26 | 2 |
| West* | 17 | 8 |
| Portsmouth | 15 | 3 |

Record: 24-2
S.O.C.: 11-0
*Indicates S.O.C.

Our softball season was a very good one, losing only two games out of twenty-six. Those two losses came from Westerville South and in the regional finals. The team also won two weekend tournaments during the season and went undefeated in S.O.C. Over all the team worked hard with great attitudes to combine for an exceptional year.

Carol Vice



BASEBALL



First Row: Mark Trapp, Don Kelley, Jason Gearheart, Benji Wiget, Danny DeLotell Second Row: Greg Ruby, Chris Swayne, Tony Moritz, Troy Pennington, John Ricks, Marc Cottle Third Row: Mr. Leightenheimer, Coach, Jon Beegan, Brian Ratliff, Tony Robinson, Craig Gearheart, DJ Church, Mike Warner, Lorry McDaniels



Mr. L. and Larry McDaniel, Manager



Coach Dove Leightenheimer



Coach Dick McCleese

| OPPONENT | SCORES | |
|-----------------|--------|----|
| Minford | 8 | 4 |
| Waverly | 12 | 2 |
| Green | 4 | 1 |
| Northwest | 8 | 1 |
| South Webster | 9 | 7 |
| Valley | 6 | 5 |
| Notre Dame | 6 | 5 |
| New Boston | 4 | 2 |
| Piketon | 12 | 3 |
| Ironton St. Joe | 15 | 3 |
| Wheelersburg | 10 | 16 |
| Eastern | 10 | 11 |
| Portsmouth West | 8 | 2 |
| Western | 1 | 16 |
| Portsmouth East | 1 | 14 |
| Piketon | 11 | 2 |
| Northwest | 20 | 3 |

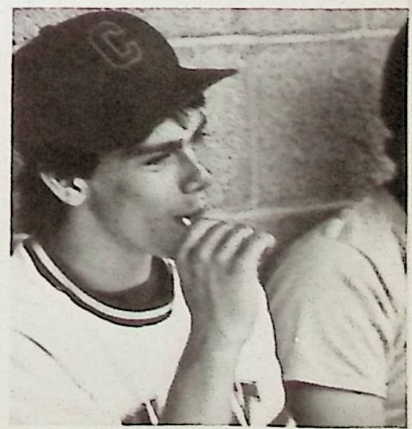
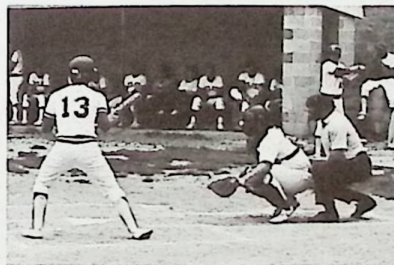
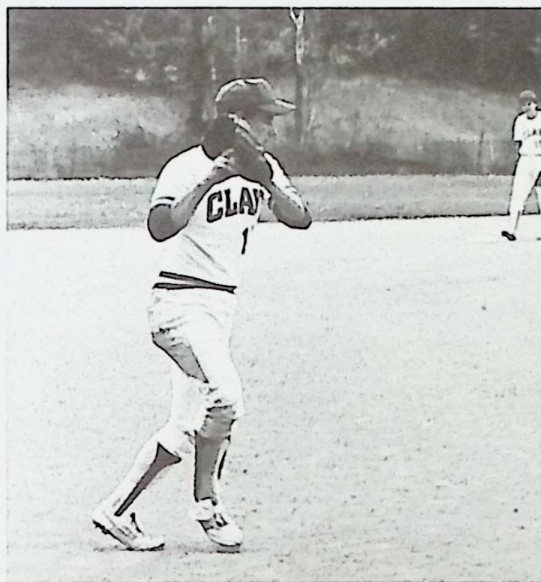
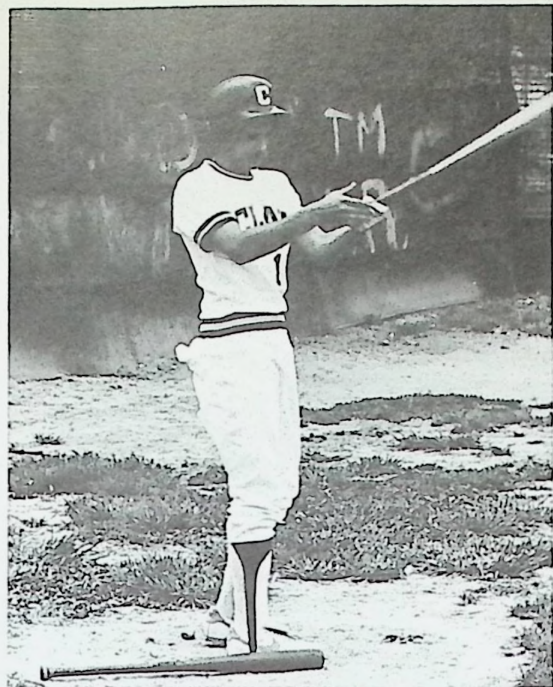
Totals 4 wins - 13 losses



SENIORS - MIKE WARNER AND MARK TRAPP

HONORS
Mark Trapp - First Team S.O.C.





SEVENTH GRADE

Billy Adoms
Craig Adkins
Ermal Adkins
Greg Adkins
Brooke Bertram



Elizabeth Blevins
Julie Bramblett
Amy Brush
Angie Carpenter
Shad Chandler



Ronnie Chaffin
Shari Card
Amy DeLotelle
Chris DeLotell
Teresa Ekleberry



Chad Eichenlaub
Michael Eldridge
Tracie Erwin
Debbie Evans
Stephen Foster



Erica Goodballet
Diane Gookin
David Hayton
Brenda Howell
Susan Howell

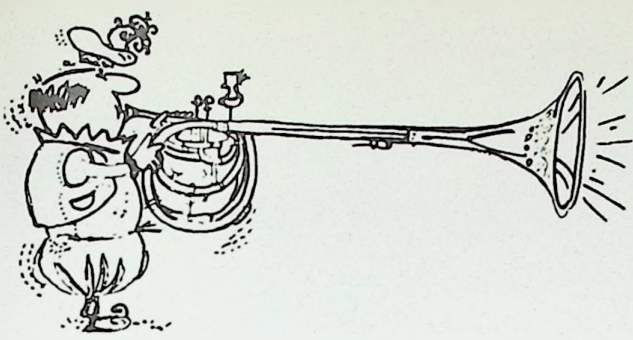


James Horner
Richie Hoover
Mike Lamb
Raron LaNier
Chris Large



Carl Martin
Sean Maynard
Todd McCallister
John Mills





Tina Murta
Lisa Montgomery
Laura Montgomery
Laura Minch



Wendy Pennington
Paul Palfrey
Mindy Orthmeyer
Jay Niblick
Angle Neal



Danny Penwell
Mindy Powell
Jay Prosch
Maciel Rheo
Becky Scaff



Duane Scaggs
Jason Seagraves
Rhonda Slone
Jerry Sowards
Stephanie Stamper



Vanessa Stevens
Angle Strousbaugh
Brian Thompson
Michelle Trapp
Shelly Vulgamore



David Whisman
Tonya Whisman
Jeff Whitley
Joe Wright
Jennifer Zeune

EIGHTH GRADE

Angela Adams
John Adams
Shawn Adkins



Mike Alexander
Anthony Arthurs
Hank Bailey
Michelle Bailey
Cindy Bibb



Katie Bibb
Jamil Bishop
Lori Boggs
Chris Brown
Michelle Breech



Amy Broughton
Jason Burgess
Eddie Carrier
Brian Chapman
Emily Collier



Jeanie Collier
Jenny Colegrove
Stacy Collins
Deena Conley
Daria Cummings



Tammy Curnutte
Bryan Davis
Lisa Deltchel
Lori Easter
Ricky Eastwood



Joseph Englebrecht
Lisa Eubank
Aaron Ginn
Regina Hempill





Tina Hoover
Phillip Holt



Tim Horner
Eric Hudson



Mike Hudson
Bobby Hurn
Dale Jones
James Jordan
Kathy LeMaster



Becky Lewis
Charlene Kelly
Dwayne Kongos
Jamey Martin
Ashley McGlone



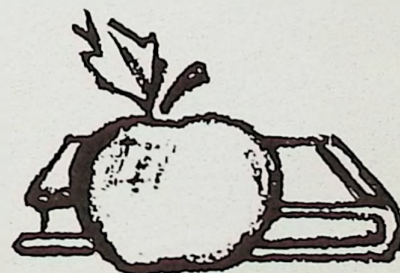
Todd Miller
Jimmy Myers
Josh Pock
Niki Pavey
Tammy Phipps



Tina Reynolds
Michael Ricky
Andy Runyon
Brad Snook
Kim Spackey



Darrin Thompson
Angie Whitley
Sara Wilson



Junior High Classes





Winterland Dance Highlights

The Junior high dance was a "Winterland" of snowflakes, sparkles and streamers. Music by Tim Shepard provided lots of dancing opportunities. The selection of Cindy Bibb as 8th grade Queen and Dale Jones as King, Shelly Vulgamore as 7th grade Princess and David Hayton as Prince was a highlight of the evening. They were crowned by Mrs. Vice and received flowers. The Winterland Royalty started the Royal Dance marking the second half of the dance.

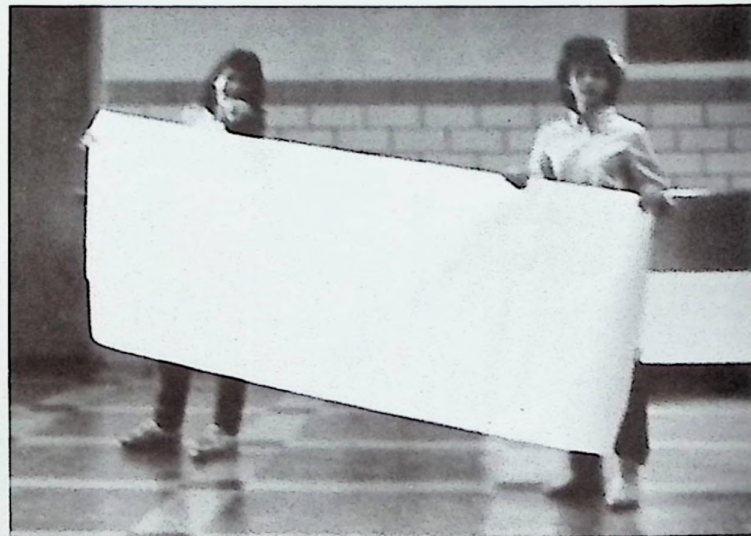
A large committee of students decorated the cafeteria for the semi-formal dance sponsored by the yearbook staff.



Princess Shelly Vulgamore, Prince David Hayton, Queen Cindy Bibb, King Dale Jones



The decorating committee hard at work.



Paper hangers





Junior high dance is a time for friends and fun.



Deputy Terry poses with Jeff, Jay, Mike, and Jay.



Entering Winterland



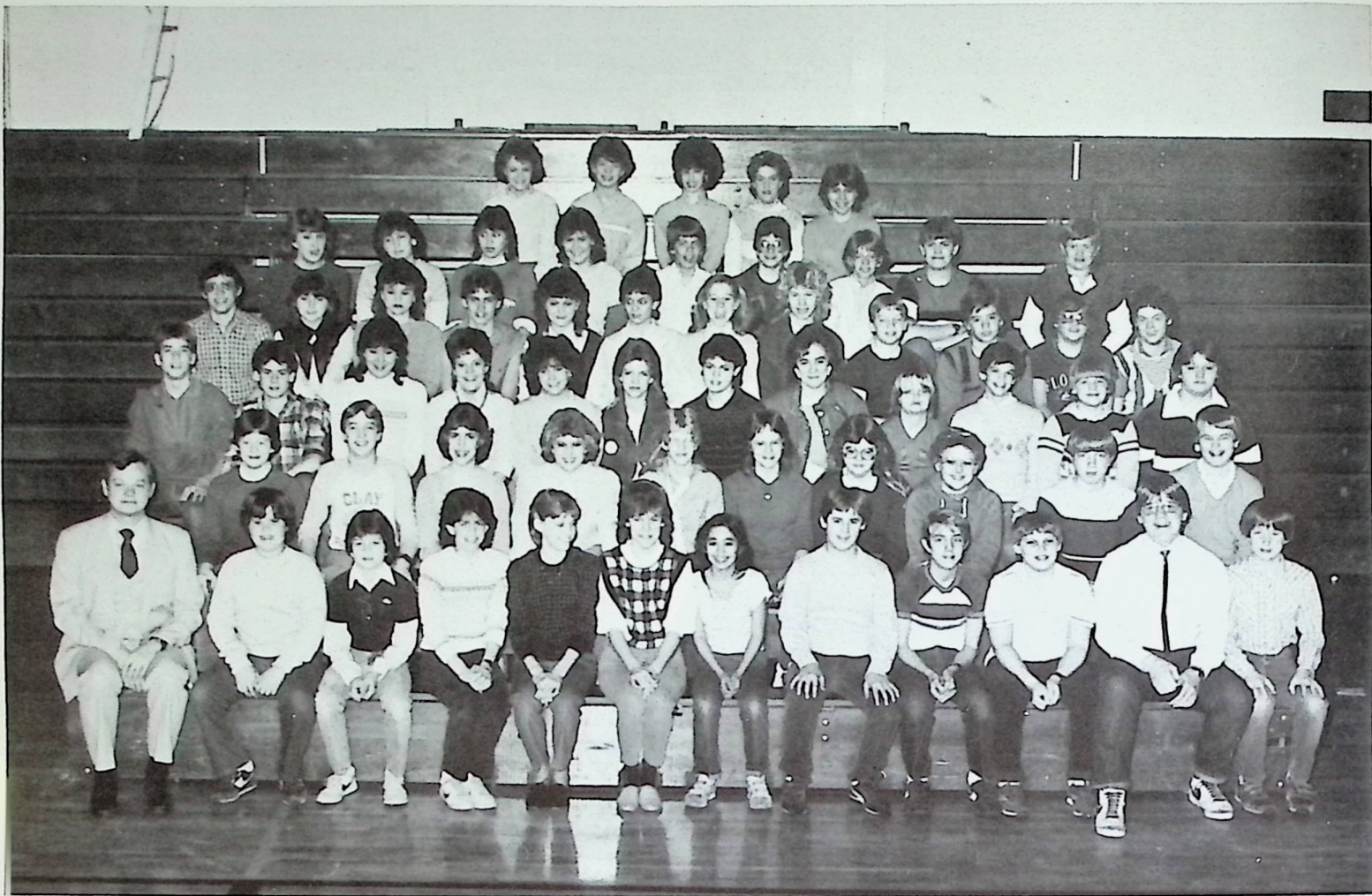
Guest JJ Phillips demonstrates his break dancing style.



David Hayton and Kathy LeMaster.



JUNIOR HIGH BAND

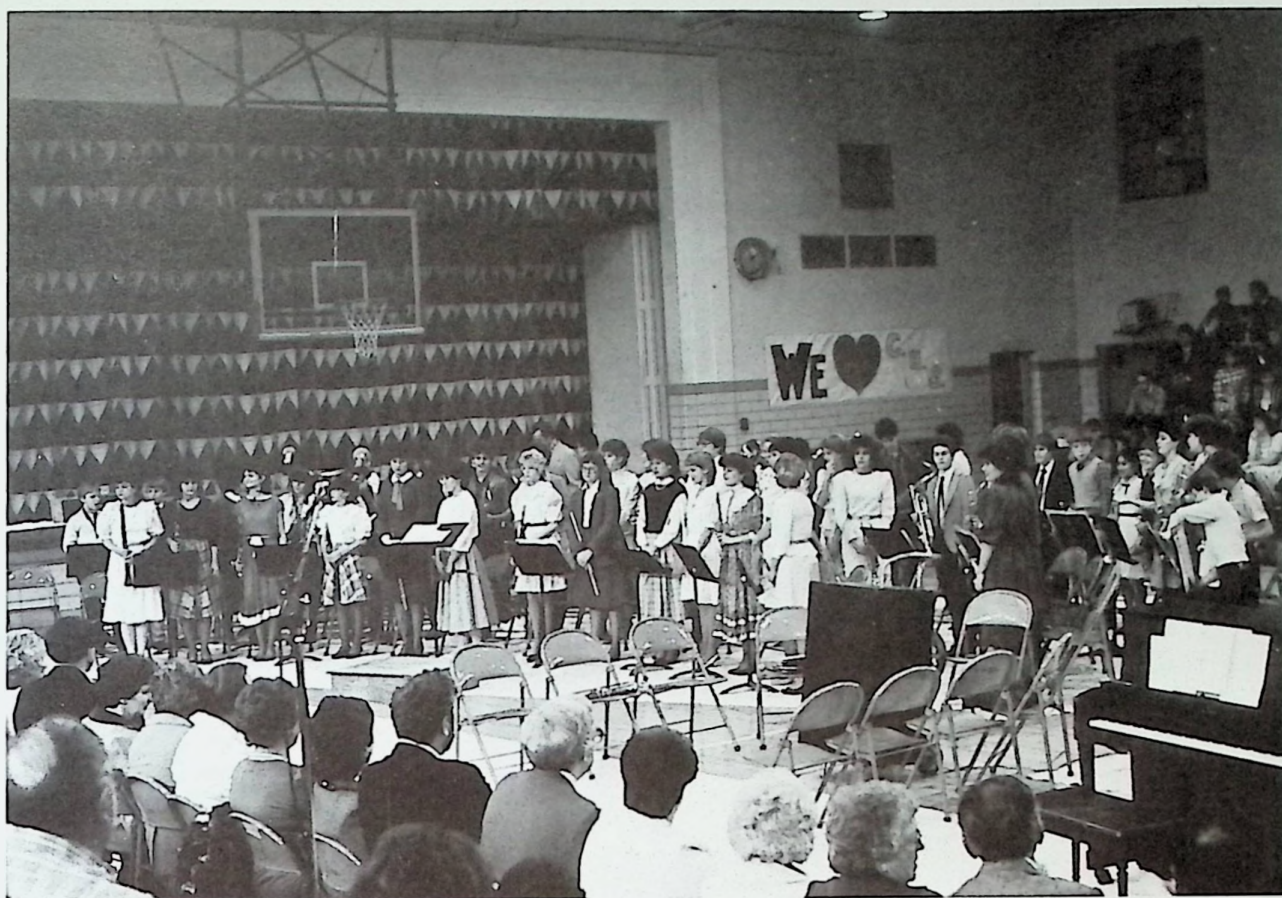


FIRST ROW: Mr. Fields, Todd McCallister, Jay Niblick, Elizabeth Blevins, Mindy Powell, Julie Bramblett, Tina Murta, Richie Hoover, Danny Penwell, Tim Taylor, Jon Mills, Ermal Adkins. SECOND ROW: Chris Brown, Ashley McGlone, Lisa Deltchel, Niki Pavey, Lisa Montgomery, Angie Carpenter, Laura Montgomery, Rhonda Slone, Jerry Sowards, Sean Maynard. THIRD ROW: Phillip Holt, Joseph Englebrecht, Jamie Bishop, Amy Brush, Amy Delotelle, Erica Goodballet, Michelle Trapp, Jennifer Zeune, Jason Seagraves, Jay

Prosch, Chris Large, Carl Martin. FOURTH ROW: Dwayne Kongos, Angie Adams, Kim Spackey, Brad Snook, Lori Easter, Amy Broughton, Laura Minch, Tracie Erwin, Mike Eldridge, Ricky Eastwood, Bobby Hurn, Aaron Ginn. FIFTH ROW: Tiffany Roe, Kathy LeMaster, Lisa Eubank, Tina Reynolds, Bryan Davis, Josh Pack, Jamey Martin, Anthony Arthurs, Todd Miller. SIXTH ROW: Daria Cummings, Sarah Willson, Regina Hempill, Deena Conley, Becky Lewis.



CHRISTMAS CONCERT HIGHLIGHTS



JUNIOR HIGH BOYS' BASKETBALL

SCORE BOX

| OPPONENT | CLAY | | |
|---------------|------|----|---|
| South Webster | 52 | 46 | L |
| Valley | 64 | 16 | L |
| Morgan | 35 | 27 | L |
| Union | 27 | 31 | W |
| East | 43 | 30 | L |
| South Webster | 33 | 25 | L |
| East | 43 | 29 | L |
| McDermott | 51 | 31 | L |
| New Boston | 53 | 30 | L |
| Wheelerburg | 70 | 25 | L |
| Otway | 37 | 47 | W |
| Minford | 49 | 20 | L |
| TOURNAMENT | | | |
| McDermott | 49 | 23 | L |
| Union | 40 | 38 | L |



FIRST ROW: Sean Maynard, Jay Prosch, Jay Niblick. SECOND ROW: Jeff Whitley, Brad Snook, Joe Englebrecht. THIRD ROW: Paul Pelfrey, Josh Pack, Phil Holt. FOURTH ROW: Mr. Bauer, Coach, Brian Davis, Bryan Chapman.



Junior High Tournament Action



JUNIOR HIGH GIRLS' BASKETBALL



FIRST ROW: Elizabeth Blevins, Mindy Powell, Angie Carpenter, Rhonda Slone, Jenny Colegrove, SECOND ROW: Amy Brush, Regina Hemplll, Tracie Erwin, Lisa Montgomery, Tammy Curnutte, Model Rhea

SCORE BOX

| OPPONENT | | CLAY | |
|---------------|---------|------|---|
| South Webster | 32 | 18 | L |
| South Webster | 30 | 15 | L |
| Valley | 46 | 22 | L |
| Valley | 24 | 7 | L |
| Wheelerburg | 37 | 19 | L |
| Notre Dome | 31 | 17 | L |
| Union | 20 | 12 | L |
| Minford | 34 | 15 | L |
| McDermott | 20 | 13 | L |
| Vernon | 24 | 15 | L |
| New Boston | 17 | 13 | L |
| Vernon | 15 | 20 | W |
| Morgan | 20 | 26 | W |
| McDermott | 14 (OT) | 15 | W |
| Otway | 21 (OT) | 22 | W |

COACH'S COMMENTS

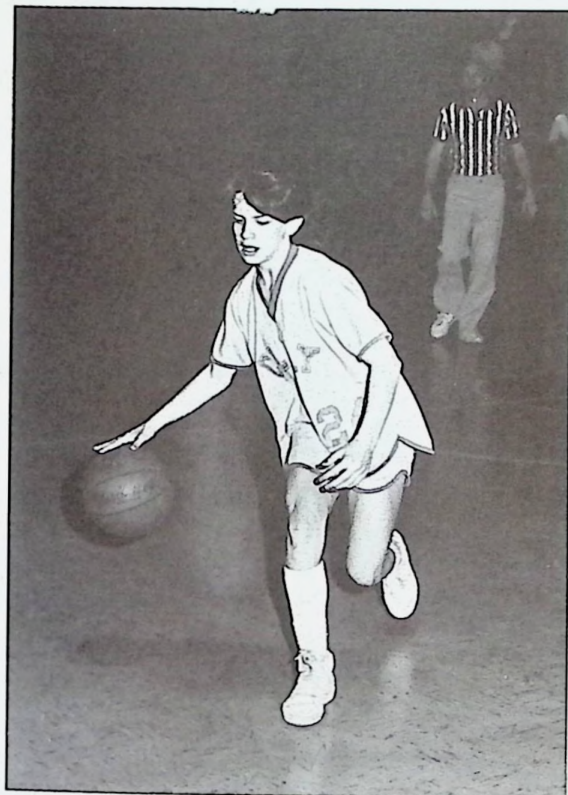
We feel our season was a success in spite of our won-loss record. We suffered from a lack of size and from inexperience. (Only Tommy played last year so we were basically seventh graders playing eighth graders.) The girls improved in all phases of the game during the season. Inconsistency was our biggest problem but consistency comes with experience.

The attitude of the girls was very good. They never quit hustling. We were two for two in overtime games which shows some character. We are looking forward to next year when five of our eight girls who won letters return.

Special recognition goes to Tammy, Regina, and Jenny as team captains. Special thanks to Ryan and Rodney Walker for serving as managers.

Jack LeMaster, Coach

Junior High Tournament Highlights

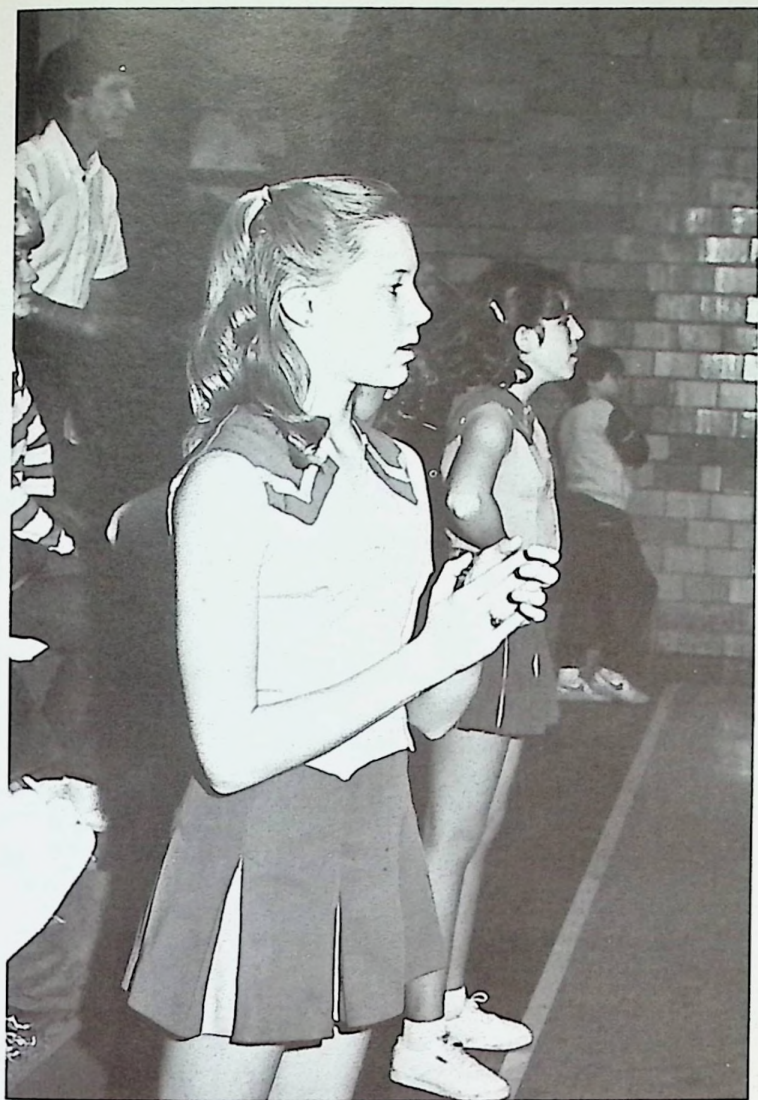


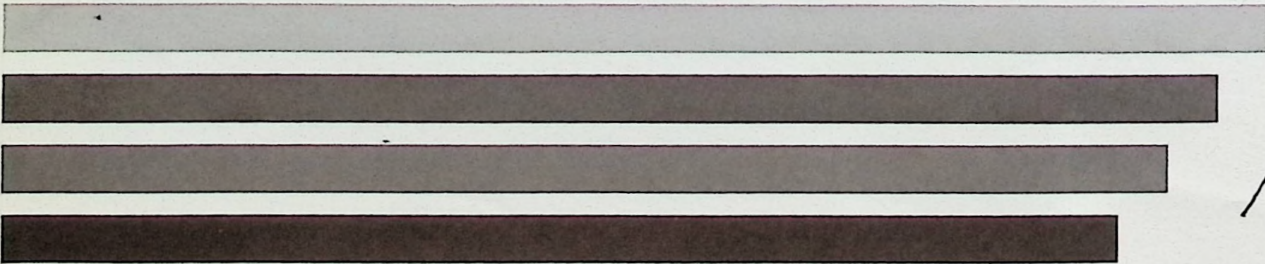
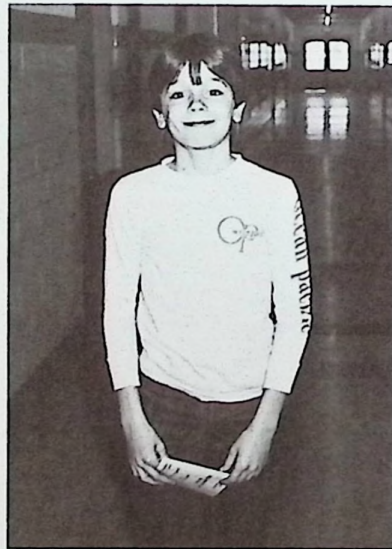
JUNIOR HIGH CHEERLEADERS



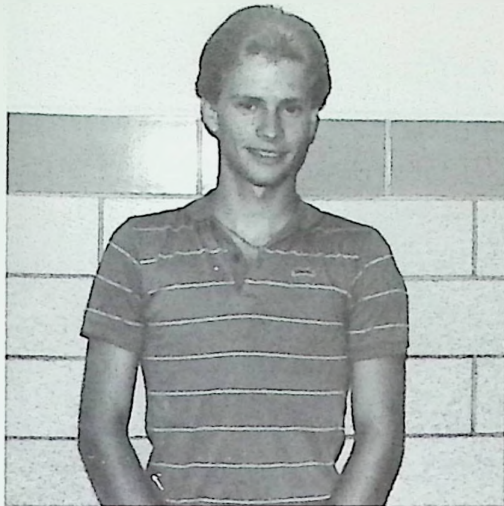
Lisa Deltchel, Niki Pavey, Daria Cummings, Laura Minch (Not pictured: Deena Conley)



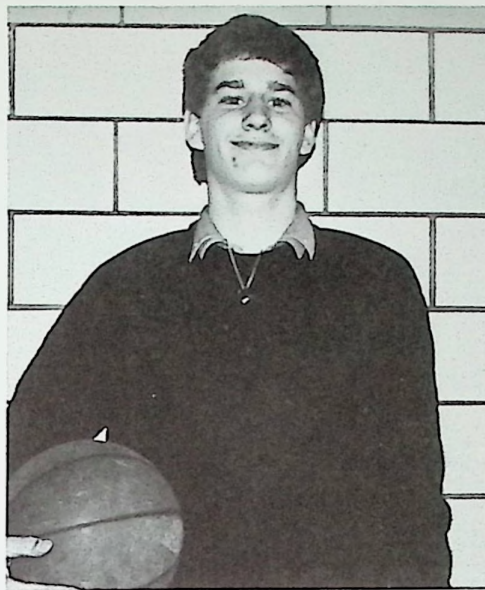




SENIOR BASKETBALL PLAYERS



Mike Warner



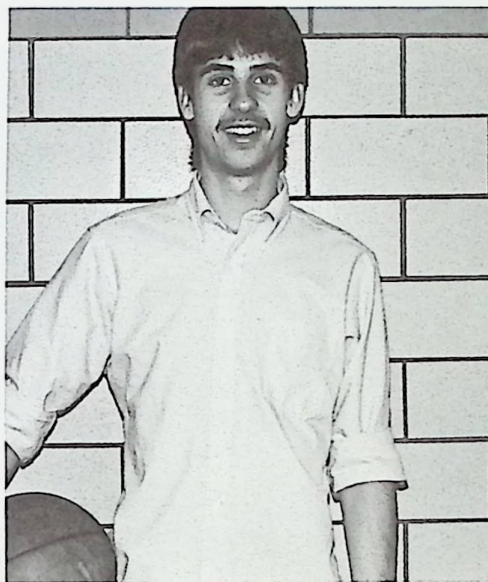
Jim Vastine



Mark Trapp



Cheryl Glenn



Terry Craft



Lisa Leive



Angie Craft

compliments of
PEGGY and ERNIE VASTINE



Karen Adams



(614) 354-4732
353-0594

T. L. BLACKBURN CONSTRUCTION CO.

GENERAL CONTRACTOR
COMMERCIAL · INDUSTRIAL

T. L. BLACKBURN
DAN HILL

2701 ARGONNE RD.
P.O. BOX 1463
PORTSMOUTH, OHIO 45662



AUTO • HOMEOWNERS
FIRE • BONDS • LIFE



HUNTER INSURANCE


ROY L. HUNTER

MARK HUNTER

"COMPLETE INSURANCE SERVICE"
354-3124 • 840 7TH ST. • PORTSMOUTH, OHIO



*We're proud to be part of
the neighborhood.*

BANK ONETM 

**PFLEGER'S FURNITURE
STORE**

MINFORD, OHIO

Phone 820-3412





BONANZA

US 23 North
Rosemount


Home of Freshtastiks
Banquet Room Available

354-3400

Good Luck Class of '85
**CRAFT'S CUSTOM
KITCHENS**

"Kitchen Specialists"
Rubyville, Ohio

Route 139 Harold Craft
456-4878




24 - HOUR WRECKER SERVICE
Day or Night 1- 614-354-6227

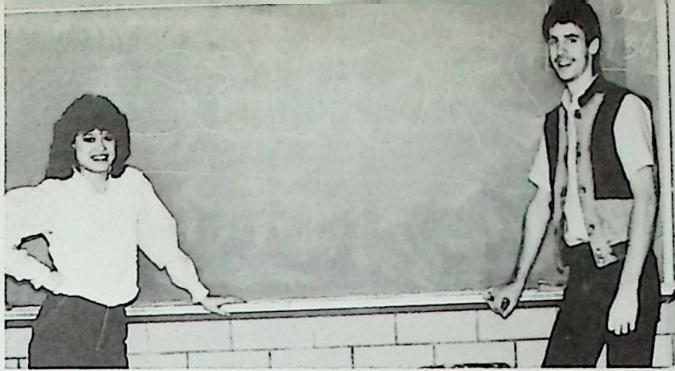
HOLIDAY INN GULF

George Crumm and Larry Rickey

Complete Auto Service
U.S. Route 23 North







STEVE'S LOCK & KEY

719 CHILLICOTHE ST.
PORTSMOUTH, OHIO
614-353-3312

U.S. LOCK

"The Professional's Brand"

RIFFE and BENNETT INSURANCE
AGENCY INC.

422 Center Street
New Boston, Ohio

VERN RIFFE GENE BENNETT

Associate: Joe Burnside
Phone 456-4191



LUTE

PLUMBING SUPPLY, INC.
WHOLESALE DISTRIBUTORS

pipe • valves • fittings • plbg. fixtures • water works splys.
water htrs. • pumps • tools • water coolers

Residential • Commercial • Industrial

347 3rd Street
Portsmouth, Ohio
Ph (614) 353-2112

For your convenience: Visa or
Master Charge

BRANT FUNERAL HOMES

Sciotoville & Portsmouth

Jeff Brant, President

"The only firm serving Clay
Township from two locations."





Serving the Clay Area For Over
40 Years



BORDEN, INC.
237 Second Street
Portsmouth, Ohio
353-2153

EVAN'S SUPERMARKET

Clarktown, Ohio
456-5239

Double Crisp
Fried Chicken
To Go

Dave Evans, Owner

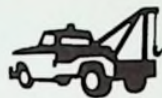
Beemer's Super Market

404 Center Street — CB 02-03
WHEELERSBURG, OHIO 45694

WRIGHT'S CHAIN LINK FENCE

We do it the
"WRIGHT"
way
Rt. 2 Lucasville 456-4346





Dean Knittel Auto Center
AAA WRECKER SERVICE

12th & FRANKLIN STREETS
RT. 52 WEST
PORTSMOUTH, OHIO

PHONE 353 1647
NIGHTS 354 4643
John McGraw



... 24 HOURS A DAY



P.O. Box 951
Portsmouth, Ohio 45662



out
cause
u.
dict

Compliments of

Dr. Charles W. Wilson

**Stop and Shop at
BLANTON'S MKT.**
"Home of Quality Meats
and Fresh Produce at
Fair Prices"
Eden Park 456-4487





Enjoy

Coca-Cola

REG. U. S. PAT. OFF.

Mid Atlantic Coca-Cola
Bottling Company
3001 Scioto Trail
Portsmouth, Ohio
Phone 353-3133

"Coke Is It!"

Phone 574-2022

WILLIAMS FURNITURE

Original and Only for 27 years
in
Wheelersburg, Ohio

Everett E. Williams

**GINETTI'S PIZZA
WE DELIVER**

Rosemount Area
Call 354-1811

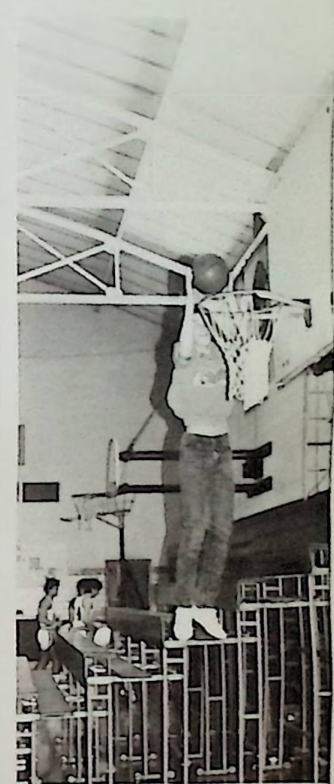
Eden Park, Northmoreland,
New Boston and Rubyville
Call 456-8100

Congratulations Class of "85"
Mark and Monica Harris, Owners

**FASHIONETTE
UPHOLSTERY
FABRICS
Rt. 2 (RUBYVILLE)
LUCASVILLE, OHIO**

**UPHOLSTERY SUPPLIES
EXPERT UPHOLSTERY**





SCIOTO SHOE MART

TOM SELBEE
OWNER

615 Harding Ave. Portsmouth, Ohio 45662
Bus. Phone (614) 776-7512 Home 820-3202



THE DECORATOR SHOPPE

5619 GALLIA STREET
PORTSMOUTH, OHIO 45662
614/776-7333

Wallcoverings

Country Gift Accessories

HOWARD & LAVONNA SENNETT, Owners

YOUR RING, YOUR WAY-



605 Chillicothe St.
353-6252

Every Ring is Backed by the Art Carved
Full Lifetime Warranty

ARTCARVED
CLASS RINGS INC

Phone 614-820-3342 MINFORD ELEVATOR

Box 193 Minford, Ohio
Feed - Seeds - Fertilizer
Farm Supplies
Custom Grinding and Mixing
"Complete line of livestock
feed and health aids"

Owner Paul Poole



at
cause
will
back



PURDY LUMBER COMPANY

U.S. 23
Lucasville, Ohio
phone 259-2160
259-2821



SPECIALIZING IN TEAM EQUIPMENT
TROPHIES & PLAQUES

Congratulations and Good Luck
to all
Graduating Seniors

look at us now!
marting's



Try Your Hand At 24 Hour Banking.

Get cash, make deposits and transfers between
your BancOhio accounts 24 hours a day...at more than
150 AnytimeBank® machines, all across Ohio.
Give it a try here in
at:

BancOhio
National Bank
MEMBER FDIC
© 1983 BancOhio National Bank
® Registered service mark of BancOhio Corporation





BIG VALUE, INC.
4144 Gallia St.
New Boston, Ohio

Custom Pipe Bending
Bowling Balls and Drilling
**CLAUSING MUFFLER & RADIATOR
SHOP**

Clarkstown, Route 139
Bill and Randy Clausing
(614) 456-6355 Mon.-Fri. 9-6

Rosemount E and G
Laundro - EZ
owners - Gene and Grace Bloomfield
4444 Old Scioto Trail
Rosemount

Minford Pharmacy, Inc.

Phone 820-3875



5521 GALLIA STREET
SCIOTOVILLE, OHIO
776-2191

OFFICE HOURS DAILY BY APPOINTMENT
CLOSED THURSDAY

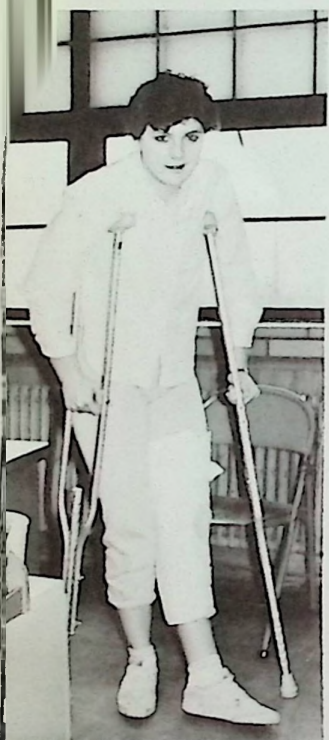
DR. C. R. McCOY
CHIROPRACTOR

1710 ROUTE 10 - P.O. BOX 59
SOUTH SHORE, KY 41175

Phone
(606) 932-4133

Compliments of
BOB AND FLOYD TIRES
1201 Chillicothe Street
353-4729





CUSTOM • SIGNS • FURNITURE • FRAMING • ART
WORK WORK

Woodland Images

Beautifully Hand Crafted Wood Items
AUSTRALIAN MINI MALL
"DOWN UNDER" 804 7th ST.
PORTSMOUTH, OHIO 45662

CRAFTSMAN
Tim Bradford
353-0483

"ACCESSORIES AND COUNTRY WOOD FURNITURE
BUILT FOR YOU"



CUSTOM SCREEN PRINT
HEAT TRANSFERS
SHIRTS, CAPS, JACKETS

Paul Spence
OWNER

(614) 574-4774
433 SOUTH STREET
WHEELERSBURG, OHIO 45694

HOUSE OF BARGAINS

"Little Bit of Everything"

8101 Gallia
Wheelersburg, Ohio
574-4784

"Stick With Us
For All Your
Insurance Needs!"

Chuck Zaler

**ZALER
INSURANCE AGENCY, INC.**

P.O. Box 700
Lucasville,
OH 45648

(614) 259-4063

DILLOWS DAIRY BAR

Rt. 104 & 348

Lucasville, Ohio

Phone
259-2520

Open 10-11
7 days a week

NEWMAN ROOFING & TIN SHOP

"SERVING PORTSMOUTH
OVER 50 YEARS"
• CONTINUOUS GUTTERS
• BUILT-IN TIN GUTTERS
AND ALTERATION
SOFFITS • FASCIA • ROOFING

CARL NEWMAN - YOUR SHEET METAL MAN



NEWMANS ROOFING & TIN SHOP
434 2nd Prtsmth 353-3649

HICKIES OLD FASHIONED HAMBURGER INN

3800 Rhodes Avenue
"Home of the Big Yogi"
Phone 456-9953



STAPLETON
OFFICE SUPPLY INC.

607 Chillicothe Street • P.O. Box 1089
Portsmouth, Ohio 45662

(614) 353-1187





302 MARKET ST.
PORTSMOUTH, OHIO 45662
(614) 354-5825



Kelly's Carpet, Inc.
PADDING & SUPPLIES

COLEN KELLY
OWNER

BUS. HRS. 9-6 MON- Friday
SAT. 9-5

MINFORD BODY SHOP

FREE ESTIMATES

Leonard Collier - Operator

Rt. 335 Minford, Ohio

Phone 820-4224

BENNETT A-1 USED CARS AND BODY SHOP

Front End Alignment
24 Hour Wrecker Service
Business - 820-2555 Home - 820-2748

Roger and Loretta Blackburn

MULETOWN MINI MART

Corner St. Rt. 335 & Lucasville -
Minford Road
Minford, Ohio Phone 820-4100

TELEPHONE 456-6546

HOWARD D. MCCLEESE, D.D.S.

OFFICE HOURS
BY APPOINTMENT

3407 RHODES AVENUE
NEW BOSTON, OHIO 45662

SCIOTO VALLEY PRODUCE CO. INC.

Wholesale Fruits and Vegetables
1004 Chillicothe St.
Portsmouth, Ohio

602 - 606 CHILLICOTHE ST
POST OFFICE DRIVE - IN
WHEELERSBURG BANKING CENTER
MINFORD BANKING CENTER
NEW BOSTON BANKING CENTER

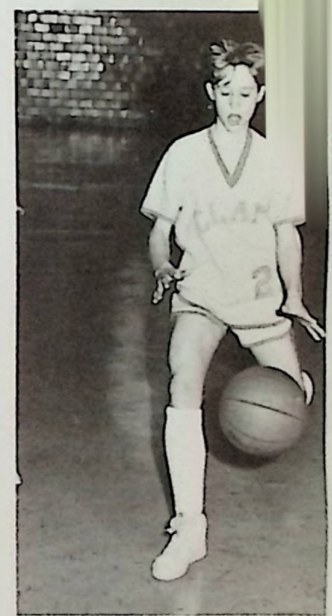
353-4151
353 4151
574 2521
820-2111
456 4164

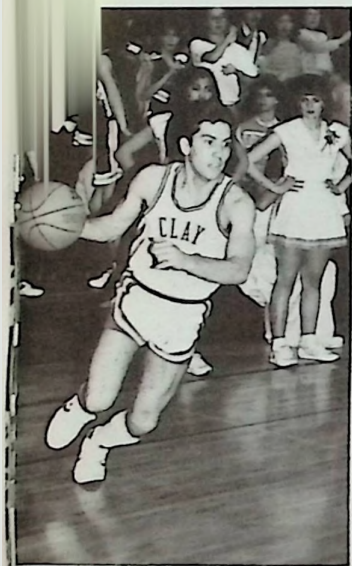


River Valley Piping & Plumbing Supply Co.

P. O. BOX 3187 4010 GALLIA STREET
NEW BOSTON, OHIO 45662
(614) 456-8251

Owner - Jock Pauley






**MARKET STREET
HARDWARE**

Compliments of
WESTEND SHOE MART

Dee Russell's
ANTIQUE CRADLE
717 Chillicothe Street Portsmouth, Ohio
614-353-5075

STARLIGHT PHOTOGRAPHY
In the Burg
433 South Street 574-8852

 **MAIN AUTO PARTS**
MAIN STREET ROUTE 23
LUCASVILLE OHIO 45648
BILL DUFFER OWNER
259-4677

Dr. John DiTraglia, M.D.
1727 27th Street Building H Suite 202
Portsmouth, Ohio 45662 354-6605

**RAZOR EDGE
STYLING SALON**
3660 Gallia Street New Boston, Ohio
Kelly Sparks 456-5432

Mountain Top Jamboree
Rt. 6 Portsmouth
456-4697 Oakle Brown, Owner

Li'l GIFT SHOP
4023 Rosemount Road
Handmade Gifts and Arrangements
Kathy Mills, Jeneane Kelly 456-4671

KEGLEY'S NEW BOSTON PHARMACY
4152 Gallia Street Phone 456-4195
New Boston, Ohio

**MINFORD FEED &
SUPPLY**
614/820-3626 Minford

THE PIZZA BOX
Lucasville, Ohio
259-4898

Bill & Emma's Custom Signs
"Engraving Specialist"
4327 Gallia St. New Boston, Ohio
Name Pins, Desk Plates 456-5800
SATISFACTION GUARANTEED

353-5710 OR 354-2259
BICKETT MACHINE & SUPPLY INC.
1411 ROBINSON AVENUE
PORTSMOUTH, OHIO 45662

PHONE 353-4250 
B & B COMPANY
837 GALLIA STREET - PORTSMOUTH OHIO

**TRUE VALUE HARDWARE
and
TOYTOWN**
New Boston, Ohio





Morgan Bros.
Jewelers

734 FIFTH ST. • PORTSMOUTH,
PHONE 353-3259 OHIO

Diamonds
jewelry

HAMBURGER INN NO 1 - ORIGINAL
THE ORIGINAL HAMBURGER INN
"Serving Area Since 1932"
THE HAMBURGER THAT'S JUST
A LITTLE DIFFERENT
Order By Phone & Take Em Home
Open 6 AM - 7 PM - Closed Sunday
FREE PARKING

1547 Gallia Prtsmth 353-9248

WE SERVICE MOST MAKES
TYPEWRITERS AND
ADDING MACHINES
SHARP COPIERS
OFFICE SUPPLIES - FURNITURE
RUBBER STAMPS
EVERYTHING FOR THE OFFICE

BIHL OFFICE SUPPLY, INC.

PHONE 614-353-2311
906 GALLIA STREET
PORTSMOUTH, OHIO 45662

Lou McDaniel, Owner
Shirley McDaniel, Owner

LOU'S OVERHEAD DOORS
Commercial & Residential Garage Doors & Operators
Installation & Service

1608 Gallia St.
Portsmouth, Ohio 45662

(614) 354-2449

Congratulations Seniors!
Scott Oliver, D.D.S.

Phone 820-2114

Styling Unlimited

DOLORES SCHUMAN (OWNER)
627 7th ST., PORTSMOUTH, OHIO 45662
TELEPHONE: 354-6063

2 OPERATORS

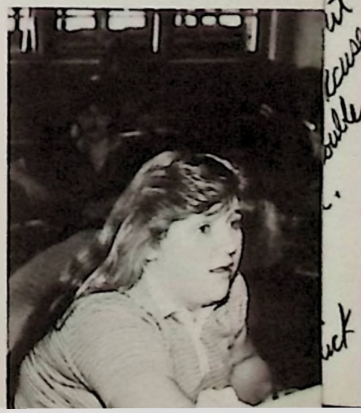
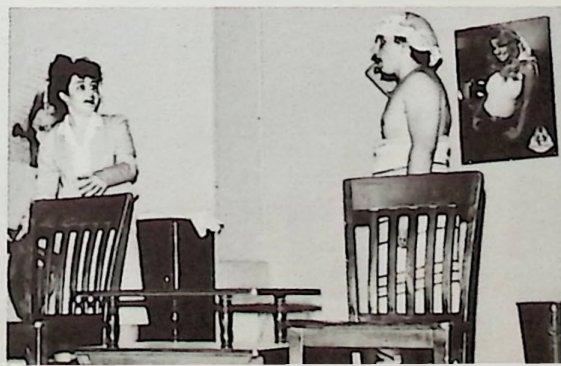
Compliments of
Vern Riffe, Speaker
Ohio House of Representatives

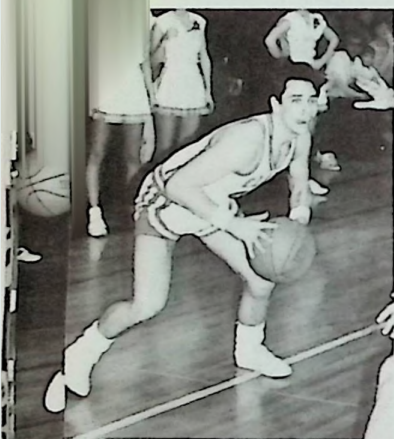
Ohio Pest Control (The Bug Shop)
Professional Termite & Pest Control
Complete Line of "Do It Yourself Kits"
Chemicals, Baits, Traps, Etc.
4621 Old Scioto Trail
Rosemount 354-5995

STAN RUBY DRILLING

Bruce Blevins
Owner

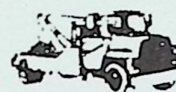
Route 2 Box 123
Lucasville, Ohio 45648
Home: 456-5714 Business: 456-5435





MCMAMERA PRINTING

1011 32nd Street
Portsmouth, Ohio 45662



24-HOUR WRECKER SERVICE

SEAGRAVES BODY SHOP

RT. 139 ON TWIN VALLEY RD.
LONNIE SEAGRAVES, OWNER

RT. 6, BOX 169
PORTSMOUTH, OHIO 45662

PHONE
456-6744

PATRONS

Central Auto and Fleet Inc.
Williams Brothers Furniture, TV and Appliance
Scherer's Grocery and Gasoline
Eastend Supply Co.
Maples's Cakes and Catering
Wood - N - Stitch
Pat Horton's Looking Glass
Dr. Wayne E. Young
E.H. Russell Glass Co.
Bert Crothers Insurance
Compton Printing And Office Supply
Crawford and Company
Sally Day and Joey Daugherty
Lady's Fitness Center
Miller's Sohlo Gas Station
Sudden Dry Cleaners
Mr. and Mrs. Homer G. Day
Dr. and Mrs. A.H. Adams

T.W. Septic Tank Service
Arrick's Gas and Oil
Holsinger Hardware
Tri-State Uniform Sales
Flowers by Vito
Wright's Farm Center
Drs. Babcock and Babcock
Scioto Valley Health Foundation
Adonis Health Food Emporium
Sherman - Kricker Insurance Agency
Southern Ohio Sporting Goods
J. LeMaster
Dr. Ronald R. Turner, M.D.
Ray McGinnis Insurance Agency
Whitt's Tire and Auto Center
W.J. Eisnagle Co.
Dr. David Fenton



Wash. Post
Jan. 1942
1942

Wash. Post
Jan. 1942
1942

out
house
n.
lick

The book cover features a black textured top and bottom section. A horizontal band of rainbow colors, including purple, blue, cyan, green, yellow, orange, and red, runs across the middle. The colors are slightly blurred and have a painterly texture.

 WALSORTH
PUBLISHING
COMPANY
MARQUETTE MINN. U.S.A.